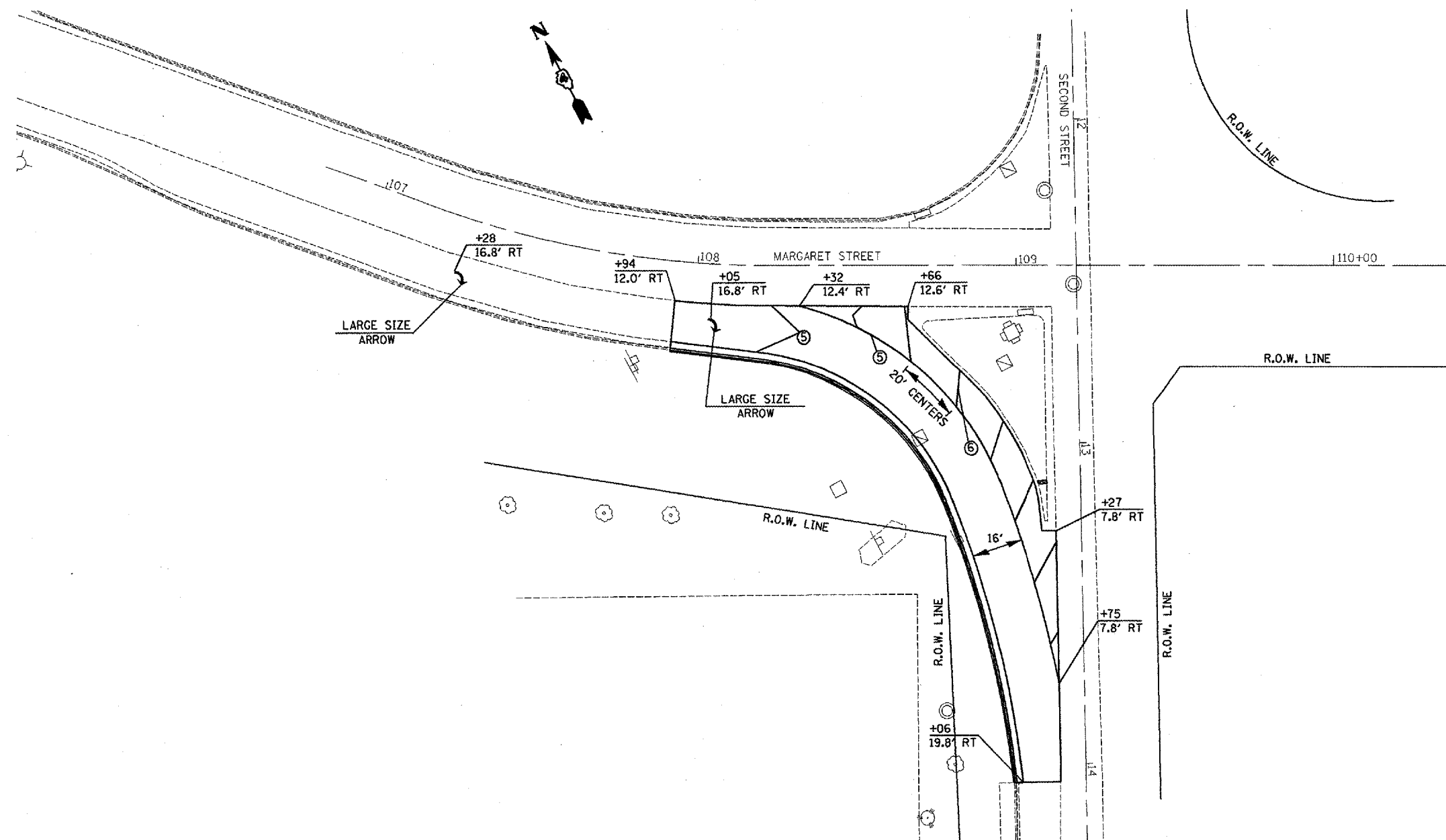


CONTRACT NO. 68649			
F.A.P. RTE.	SECTION	COUNTY	TOTAL SHEET NO.
693	D4 RADIUS IMPROV. 2007	TAZEWELL	14
STA.	TO STA.		
FED. ROAD DIST. NO. 4	ILLINOIS	FED. AID PROJECT	



**PAVEMENT MARKING LEGEND**

- ① 100 (4) SOLID (YELLOW)
- ② 100 (4) SOLID (WHITE)
- ③ 150 (6) SOLID (WHITE)
- ④ 150 (6) SKIP DASH (WHITE)
- ⑤ 200 (8) SOLID (WHITE)
- ⑥ 300 (12) DIAGONAL (WHITE)
- ⑦ 500 (24) STOP BAR (WHITE)
- ⑧ LETTERS AND ARROWS
- ⑨ 100 (4) SKIP DASH (YELLOW)
- ⑩ 300 (12) DIAGONAL (YELLOW)
- ⑪ 100 (4) DOUBLE (YELLOW)

*(Diagrammatic representations of markings with dimensions like 3.05 m, 9.14 m, 10', 15', 20', 30', 45 MPH, 45° are included in the original image.)*

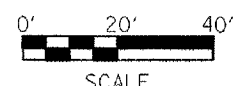
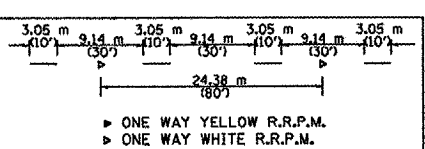
**RAISED REFLECTIVE PAVEMENT MARKERS (RRPM)**

- ① ONE-WAY CRYSTAL MARKER AT 24.38 m(80') CENTERS
- ② ONE-WAY CRYSTAL MARKER AT 12.19 m(40') CENTERS
- ③ ONE-WAY CRYSTAL MARKER AT 6.10 m(20') CENTERS
- ④ ONE-WAY AMBER MARKER AT 12.19 m(40') CENTERS
- ⑤ TWO-WAY AMBER MARKER AT 12.19 m(40') CENTERS FOR SPEEDS LESS THAN 45 MPH
- ⑥ TWO-WAY AMBER MARKER AT 24.38 m(80') CENTERS FOR SPEEDS GREATER THAN 45 MPH
- ⑦ ONE-WAY CRYSTAL MARKER
- ⑧ ONE-WAY AMBER MARKER

**DELINEATORS**

- ① DELINEATOR WITH TWO AMBER REFLECTORS
- ② DELINEATOR WITH THREE AMBER REFLECTORS

*(All dimensions are in millimeters (inches) unless otherwise shown.)*



REVISIONS	
NAME	DATE

ILLINOIS DEPARTMENT OF TRANSPORTATION

**PAVEMENT MARKING**

SCALE: VERT.      DRAWN BY  
 HORIZ.              CHECKED BY  
 DATE

PLDT DATE = 2/15/2007  
 FILE NAME = c:\pvc\pvc\112\pvc\m\shasta.dgn  
 PLOT SCALE = 4000000 / 1  
 USER NAME = ghdorman