

F.A.P. RTE.	SECTION	COUNTY	TOTAL SHEETS	SHEET NO.
693	D4 RADIUS IMPROV. 2007	TAZEWELL	23	1

STATE OF ILLINOIS
DEPARTMENT OF TRANSPORTATION
DIVISION OF HIGHWAYS
**PROPOSED
HIGHWAY PLANS**
F.A.P. ROUTE 693 (IL 29 MARGARET ST.)
SECTION D4 RADIUS IMPROV. 2007

TAZEWELL COUNTY
C-94-182-06

R 7 E

T 7 N

INDEX OF SHEETS

1. COVER SHEET
2. GENERAL NOTES, JOB SPECIFIC NOTES, STATUS OF UTILITIES
- 3-4. SUMMARY OF QUANTITIES
- 5-6. SCHEDULE OF QUANTITIES
7. TYPICAL SECTION
8. BENCHMARK & RECOVERY TIE
9. TRAFFIC MANAGEMENT PLAN
10. REMOVAL ITEMS
11. PROPOSED IMPROVEMENT & EXISTING UTILITIES
12. PROPOSED GEOMETRICS
13. JOINT DETAIL
14. PAVEMENT MARKINGS
- 15-16. PAVEMENT MARKING DETAILS
- 17-18. CADD STANDARDS
19. CROSS SECTION LOCATIONS
- 20-23. CROSS SECTIONS
HIGHWAY STANDARDS

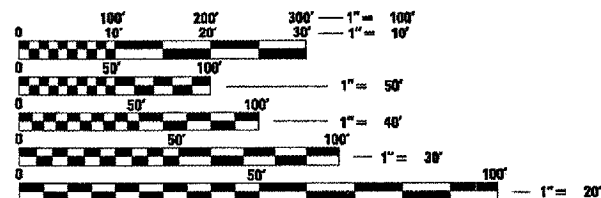
LIST OF STANDARDS

001001-01	606001-03	702001-06
420001-06	701601-04	780001-01
420101-03	701701-04	814001-01

SURVEY BOOK NUMBER
2883 (PG 36-38)

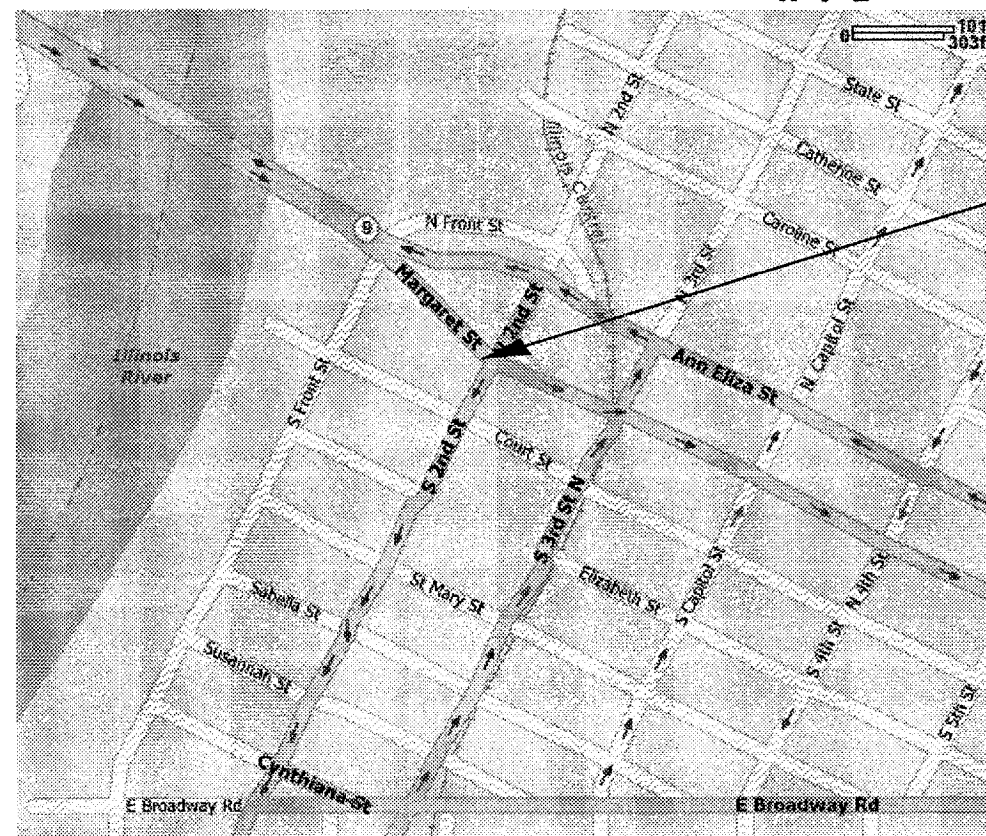
DESIGN DESIGNATION

FAP 693 (IL 9)
OTHER PRINCIPLE ARTERIAL
TRUCK ROUTE CLASS II
ADT = 7000 (2005)
SU = 300
MU = 375

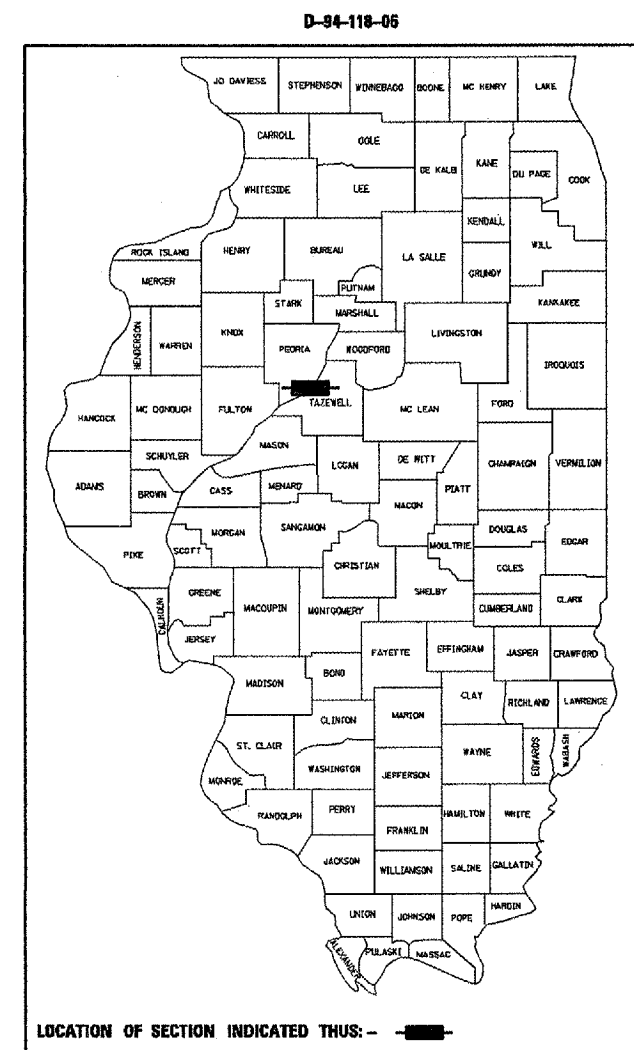


FULL SIZE PLANS HAVE BEEN PREPARED USING STANDARD ENGINEERING SCALES. REDUCED SIZED PLANS WILL NOT CONFORM TO STANDARD SCALES. IN MAKING MEASUREMENTS ON REDUCED PLANS, THE ABOVE SCALES MAY BE USED.

J.U.L.I.E.
JOINT UTILITY LOCATION INFORMATION FOR EXCAVATION
1-800-892-0123



PROJECT LOCATION
SW QUADRANT OF THE INTERSECTION
OF IL 29 (MARGARET ST.) AND
2ND ST. IN PEKIN



LOCATION OF SECTION INDICATED THUS: - - ■ - -

STATE OF ILLINOIS
DEPARTMENT OF TRANSPORTATION
DIVISION OF HIGHWAYS

SUBMITTED Feb 16 2009
[Signature]
DEPUTY DIRECTOR OF HIGHWAYS, REGION ENGINEER
March 23, 2007
[Signature]
ENGINEER OF DESIGN AND ENVIRONMENT
March 23, 2007
[Signature]
DIRECTOR OF HIGHWAYS, CHIEF ENGINEER

DESCRIPTION OF WORK:
THIS PROJECT CONSISTS OF WIDENING THE RADIUS OF THE RIGHT TURN LANE ON MARGARET STREET BY REMOVING AND REPLACING A PORTION OF IT WITH NEW CONCRETE PAVEMENT.

**PRINTED BY THE AUTHORITY
OF THE STATE OF ILLINOIS**

F.A.P. RTE.	SECTION	COUNTY	TOTAL SHEETS	SHEET NO.
693	04 RADIUS IMPROV. 2007	TAZEWELL		2
STA.		TO STA.		
FED. ROAD DIST. NO. 4		ILLINOIS	FED. AID PROJECT	

GENERAL NOTES

AVAILABILITY OF ELECTRONIC FILES

MicroStation and GEOPAK files of this project will be made available to the Contractor. If there is a conflict between the electronic files and the printed contract plans and documents, the printed contract plans and documents shall take precedence over the electronic files. The Contractor shall accept all risk associated with using the electronic files and shall hold the Department harmless for any errors or omissions in the electronic files and the data contained therein. Errors or delays resulting from the use of the electronic files by the Contractor shall not result in an extension of time for any interim or final completion date or shall not be considered cause for additional compensation. The Contractor shall not use, share, or distribute these electronic files except for the purpose of constructing this contract. Any claims by third parties due to use or errors shall be the sole responsibility of the Contractor. The Contractor shall include this disclaimer with the transfer of these electronic files to any other parties and shall include appropriate language binding them to similar responsibilities.

UTILITIES - LOCATIONS/INFORMATION ON PLANS

The locations of existing water mains, gas mains, sewers, electric power lines, telephone lines and other utilities as shown on the plans are based on careful field investigation and the best information available, but they are not guaranteed. Unless elevations are shown --- all utility locations shown on the cross sections are based on the approximate depth supplied by the utility company. It shall be the Contractor's responsibility to ascertain their exact location from the utility companies and by field inspection.

PLAN ELEVATIONS - U.S.G.S. MEAN SEA LEVEL DATUM

Use one of the following two options.

1. All elevations shown on the plans are established from U.S.G.S. mean sea level datum.
2. All elevations shown refer to U.S.G.S. datum at mean sea level unless otherwise noted

COMMITMENTS

There are no commitments for this contract.

JOB SPECIFIC NOTE

AN ENGINEERS FIELD OFFICE WAS NOT INCLUDED IN THIS CONTRACT. AN OFFICE LOCATION SHALL BE DETERMINED BY THE IDOT BUREAU OF CONSTRUCTION. CONTACT MR. BOB HACK AT (309) 671-3658.

ENVIRONMENTAL REVIEWS

Prior to the use of any proposed borrow areas, use areas (temporary access roads, detours, run-arounds, etc) and/or waste areas, the Contractor shall file the required environmental resource request surveys according to Section 107.22 of the Standard Specifications. These surveys are required in order for the Department to conduct cultural and biological resource surveys for the proposed site.

Prior to any waste materials being removed from the construction site the required environmental resource surveys will need to be obtained and filed by the Contractor. Excess waste products removed from the construction site shall be disposed of as required in Section 202.03 of the Standard Specifications.

Any protruding metal bars shall be removed prior to the disposal of broken concrete at approved disposal sites.

The required environmental resource documentation shall include the following:

- q BDE Form 2289 (Environmental Survey Request)
- q A location map showing the size limits and location of the use area
- q Signed property owner agreement form
- q Color photographs depicting the use area

Please note that a minimum of two weeks shall be allowed for the District to obtain the required environmental clearances.

EARTH EXCAVATION-INCIDENTAL TO CURB, GUTTER & DRIVEWAY

Earth excavation and backfill for proposed curb and gutters and driveway pavements shall be included in the unit cost of the various items.

PLOT DATE = 2/15/2007
 FILE NAME = o:\projects\12\plan\sheet.dgn
 PLOT SCALE = 48.0000 / 1" = 1'-0"
 USER NAME = gburman

REVISIONS	
NAME	DATE

ILLINOIS DEPARTMENT OF TRANSPORTATION

GENERAL NOTES/ JOB SPECIFIC NOTES/ STATUS OF UTILITIES

SCALE: VERT.
HORIZ.
DATE

DRAWN BY
CHECKED BY

SUMMARY OF QUANTITIES

F. A. P. NO.	SECTION	COUNTY	TOTAL SHEETS	SHEET NO.
693	24 RADIUS IMPROV. OF	TAZEWELL		3
STA.	TO STA.			
FED. ROAD DIST. NO. 6	SLURRIES	FED. AID PROJECT		

SUMMARY OF QUANTITIES			TOTAL QUANTITIES	URBAN	CONSTRUCTION TYPE CODE			
CODE NO	ITEM	UNIT		100% STATE 1000				
21001000	GEOTECHNICAL FABRIC FOR GROUND STABILIZATION	SQ YD	552	552				
21101615	TOPSOIL FURNISH AND PLACE, 4"	SQ YD	134	134				
25100630	EROSION CONTROL BLANKET	SQ YD	134	134				
28000500	INLET AND PIPE PROTECTION	EACH	1	1				
31101400	SUB-BASE GRANULAR MATERIAL, TYPE B 6"	SQ YD	552	552				
42000501	PORTLAND CEMENT CONCRETE PAVEMENT 10" (JOINTED)	SQ YD	484	484				
44000100	PAVEMENT REMOVAL	SQ YD	402	402				
44000500	COMBINATION CURB AND GUTTER REMOVAL	FOOT	203	203				
60238500	INLETS, TYPE A, WITH SALVAGED FRAME AND GRATE	EACH	1	1				
60500060	REMOVING INLETS	EACH	1	1				
60605000	COMBINATION ^{CONCRETE} CURB AND GUTTER, TYPE B-6.24	FOOT	196.2	196.2				
67100100	MOBILIZATION	L SUM	1	1				
70102635	TRAFFIC CONTROL AND PROTECTION, STANDARD 701701	L SUM	1	1				
70103815	TRAFFIC CONTROL SURVEILLANCE	CAL DA	20	20				
70106301	TRAFFIC CONTROL AND PROTECTION, STANDARD 701601, LOCATION 1	L SUM	1	1				
70106302	TRAFFIC CONTROL AND PROTECTION, STANDARD 701601, LOCATION 2	L SUM	1	1				

* SPECIALTY ITEMS

SUMMARY OF QUANTITIES

F. A. R. DIST.	SECTION	COUNTY	TOTAL SHEETS	SHEET NO.
693	04 RADIUS IMPROV. OF	TAZEWELL		47
STA.		TO STA.		
FED. ROAD DIST. NO. 8		ILLINOIS	FED. AID PROJECT	

SUMMARY OF QUANTITIES			TOTAL QUANTITIES	URBAN	CONSTRUCTION TYPE CODE			
CODE NO	ITEM	UNIT		100% STATE 1000				
* 78005100	EPOXY PAVEMENT MARKING - LETTERS AND SYMBOLS	SQ FT	31	31				
* 78005140	EPOXY PAVEMENT MARKING - LINE 8"	FOOT	473	473				
* 78005150	EPOXY PAVEMENT MARKING - LINE 12"	FOOT	82	82				
* 81306100	JUNCTION BOX (SPECIAL)	EACH	1	1				
X7015005	CHANGEABLE MESSAGE SIGN	CAL DA	45	45				
Z0012750	CONCRETE MEDIAN REPAIR	SQ FT	3	3				

* SPECIALTY ITEMS

F.A.P. RTE.	SECTION	COUNTY	TOTAL SHEETS	SHEET NO.
693	04 RADIUS IMPROV. 2007	TAZEWELL		5
STA.		TO STA.		
FED. ROAD DIST. NO. 4		ILLINOIS	FED. AID PROJECT	

25100630 - EROSION CONTROL BLANKET	
LOCATION	SQ YD
JOBSITE	134
TOTAL	134

44000500 - COMB. CURB & GUTTER REMOVAL	
LOCATION	FOOT
107+93.8 MARGARET ST. TO 14+5.6 SECOND ST.	202.3
TOTAL	203

81306100 - JUNCTION BOX (SPECIAL)	
LOCATION	EACH
EXACT LOCATION TO BE DETERMINED BY R.E.	1
TOTAL	1

21101615 - TOPSOIL FURNISH & PLACE, 4"	
LOCATION	EACH
JOBSITE	134
TOTAL	134

60238500 - INLETS, TYPE A, WITH SALVAGED FRAME & GRATE	
LOCATION	EACH
MARGARET ST. STA. 108+10	1
TOTAL	1

EARTHWORK - FOR INFORMATION ONLY		
SEE NOTES ON PROPOSED PLAN SHEET		
EARTH EXCAVATION	EMBANKMENT	EARTHWORK BALANCE WASTE (+) OR SHORTAGE (-)
CU. YD.	CU. YD.	CU. YD.
62	1	+ 61

NO SHRINKAGE FACTOR WAS APPLIED

28000500 - INLET AND PIPE PROTECTION	
LOCATION	EACH
MARGARET ST. STA. 108+10	1
TOTAL	1

60500060 - REMOVING INLETS	
LOCATION	SQ YD
MARGARET ST. STA. 108+10	1
TOTAL	1

70102635-TRAFFIC CONTROL AND PROTECTION, STANDARD 701701	
LOCATION	L SUM
JOBSITE	1
TOTAL	1

44000100 - PAVEMENT REMOVAL	
LOCATION	SQ YD
107+93.8 MARGARET ST. TO 14+5.6 SECOND ST.	401.5
TOTAL	402

70106302-TRAFFIC CONTROL AND PROTECTION, STANDARD 701601, LOCATION 2	
LOCATION	L SUM
JOBSITE	1
TOTAL	1

70106301-TRAFFIC CONTROL AND PROTECTION, STANDARD 701601, LOCATION 1	
LOCATION	L SUM
JOBSITE	1
TOTAL	1

PLOT DATE = 2/15/2007
 FILE NAME = c:\projects\112\pakt\shessta.dgn
 PLOT SCALE = 40:1
 USER NAME = ghorram

REVISIONS	
NAME	DATE

ILLINOIS DEPARTMENT OF TRANSPORTATION
SCHEDULE OF QUANTITIES
 SCALE: VERT. DATE
 HORIZ. DATE
 DRAWN BY
 CHECKED BY

F.A.P. RTE.	SECTION	COUNTY	TOTAL SHEETS	SHEET NO.
693	04 RADIUS IMPROV. 2007	TAZEWELL		6
STA.		TO STA.		
FED. ROAD DIST. NO. 4		ILLINOIS	FED. AID PROJECT	

78005100 - EPOXY PAVEMENT MARKING - LETTERS & SYMBOLS	
LOCATION	SQ. FT.
MARGARET ST.	
RT. STA. 107+28 16.8'	15.6
RT. STA. 107+94 16.8'	15.6
TOTAL	31

Z0012750-CONCRETE MEDIAN REPAIR	
LOCATION	SQ FT
SECOND ST.	
RT. STA. 13+12	3
TOTAL	3

78005150 - EPOXY PAVEMENT MARKING - LINE 12"	
LOCATION	FOOT
ISLAND CHEVERONS AT 20' CENTERS	82
TOTAL	82

42000501 - PORTLAND CEMENT CONCRETE PAVEMENT 10" (JOINTED)	
LOCATION	SQ YD
107+93.8 MARGARET ST. TO 14+5.6 SECOND ST.	483.8
TOTAL	484

60605000 - COMB. CONC. CURB AND GUTTER, TYPE B-6.24	
LOCATION	FOOT
107+93.8 MARGARET ST. TO 14+5.6 SECOND ST.	196.2
TOTAL	196.2

X7015005 - CHANGEABLE MESSAGE SIGN	
LOCATION	CAL DAY
JOB SITE	45
TOTAL	45

31101400 - SUB-BASE GRANULAR MATERIAL, TYPE B 6"	
LOCATION	SQ YD
107+93.8 MARGARET ST. TO 14+5.6 SECOND ST.	551.3
TOTAL	552

78005140 - EPOXY PAVEMENT MARKING - LINE 8"	
LOCATION	FOOT
STA. 107+94 TO 108+66 (MARGARET ST.)	73.1
STA. 107+94 (MARGARET ST.) TO 14+06 (2ND ST.)	199.10
STA. 108+32 (MARGARET ST.) TO STA. 13+27 (2ND ST.)	152.80
STA. 13+25 TO 13+75 (2ND ST.)	47.90
TOTAL	473

67100100 - MOBILIZATION	
LOCATION	L SUM
JOB SITE	1
TOTAL	1

21001000 - GEOTECHNICAL FABRIC FOR GROUND STABILIZATION	
LOCATION	SQ YD
107+93.8 MARGARET ST. TO 14+5.6 SECOND ST.	551.3
TOTAL	552

70103815 - TRAFFIC CONTROL SURVEILLANCE	
LOCATION	CAL DAY
JOB SITE	20
TOTAL	20

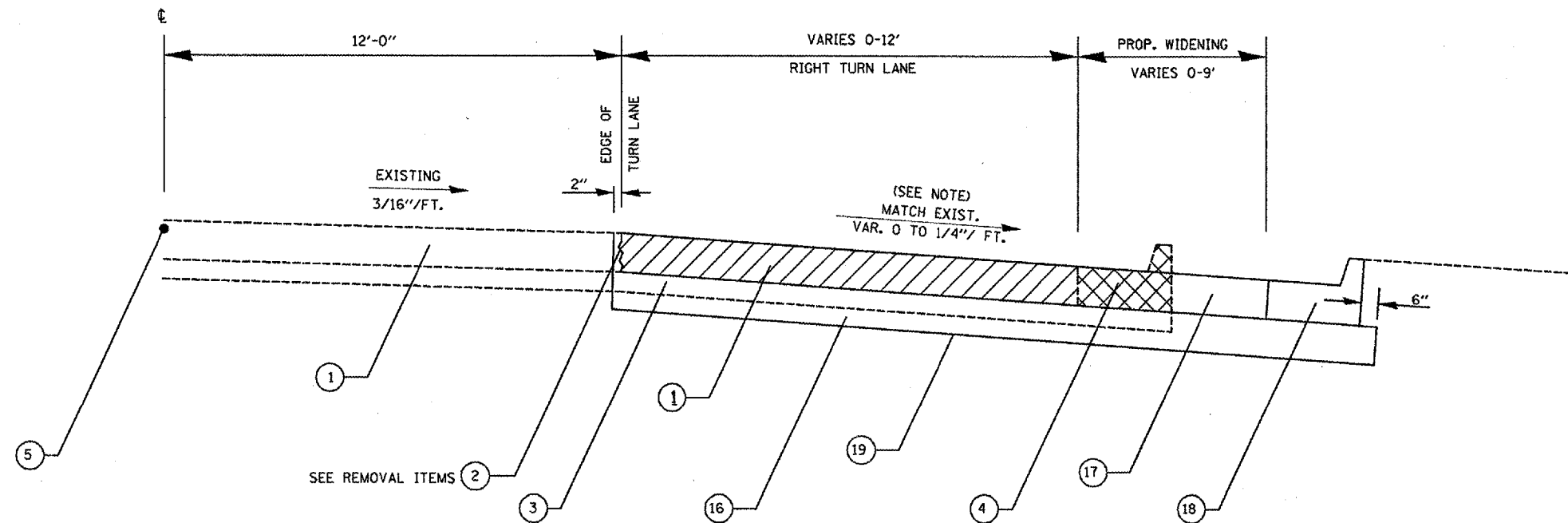
REVISIONS	
NAME	DATE

ILLINOIS DEPARTMENT OF TRANSPORTATION

SCHEDULE OF QUANTITIES

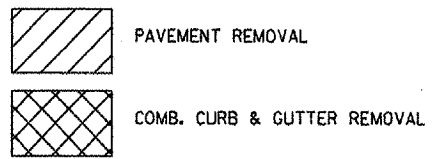
SCALE: VERT.
HORIZ.
DATE

DRAWN BY
CHECKED BY



EXISTING & PROPOSED
 STA. 107+93 TO 109+17 (MARGARET ST.)
 STA. 13+00 TO 14+06 (2ND ST.)

- | EXISTING | |
|----------|---|
| 1. | PCC PAVEMENT 10" |
| 2. | LONGITUDINAL CONSTRUCTION JOINT (KEYED) |
| 3. | STABILIZED SUB BASE 4" |
| 4. | COMBINATION CC&G TYPE B-6.24 |
| 5. | LONGITUDINAL SAWED JOINT |
-
- | PROPOSED | |
|----------|--|
| 16. | SUB-BASE GRAN. MATERIAL, TYPE B 6" |
| 17. | PORTLAND CEMENT CONC. PAVEMENT 10" (JOINTED) |
| 18. | COMBINATION CURB AND GUTTER, TYPE B-6.24 |
| 19. | GEOTECHNICAL FABRIC FOR GROUND STABILIZATION |



REVISIONS	
NAME	DATE

ILLINOIS DEPARTMENT OF TRANSPORTATION

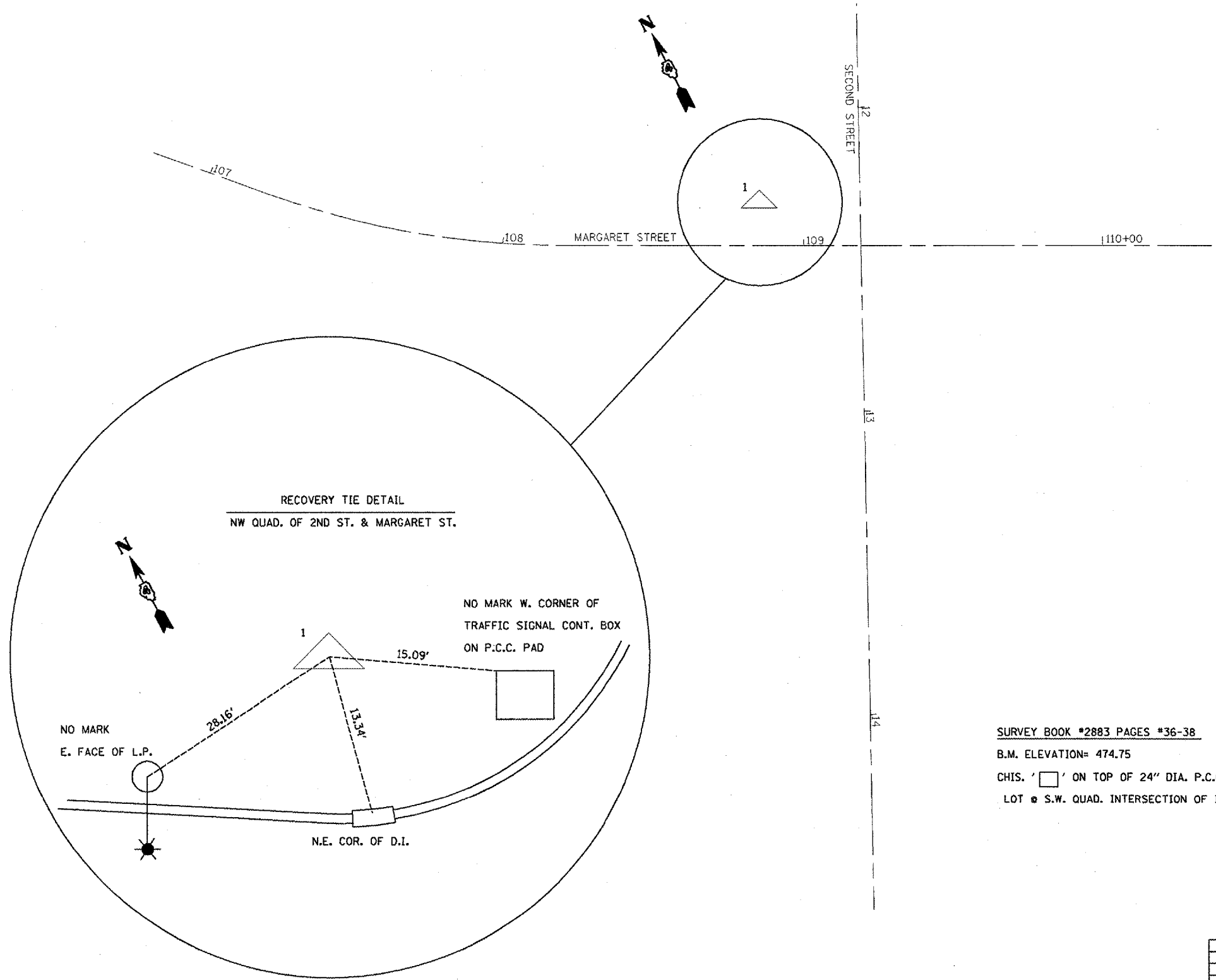
TYPICAL SECTION

SCALE: VERT. _____
 HORIZ. _____

DATE _____ DRAWN BY _____
 CHECKED BY _____

PLOT DATE = 2/15/2007
 FILE NAME = c:\pav\mesa\12\pav\shesstdgn
 USER = gsherman
 PLOT SCALE = 1/4" = 1'-0"

CONTRACT NO. 68649				
F.A.P. RTE.	SECTION	COUNTY	TOTAL SHEETS	SHEET NO.
693	04 RADIUS IMPROV. 2007	TAZEWELL		8
STA.		TO STA.		
FED. ROAD DIST. NO. 4		ILLINOIS	FED. AID PROJECT	



SURVEY BOOK #2883 PAGES #36-38
 B.M. ELEVATION= 474.75
 CHIS. ' ' ON TOP OF 24" DIA. P.C.C. LIGHT POLE BASE IN PARKING
 LOT # S.W. QUAD. INTERSECTION OF IL RT. 9 & IL RT. 29

PLOT DATE = 2/15/2007
 FILE NAME = c:\p\proj\04\12\p\p\k\shwest.dgn
 PLOT SCALE = 48.0000 / IN.
 USER NAME = gndmnm

REVISIONS	
NAME	DATE

ILLINOIS DEPARTMENT OF TRANSPORTATION

BENCHMARK AND RECOVERY TIE

SCALE: VERT. _____
 HORIZ. _____

DATE _____

DRAWN BY _____
 CHECKED BY _____

F.A.P. RTE.	SECTION	COUNTY	TOTAL SHEETS	SHEET NO.
693	04 RADIS IMPROV. 2007	TAZEWELL		9
STA.		TO STA.		
FED. ROAD DIST. NO. 4		ILLINOIS	FED. AID PROJECT	

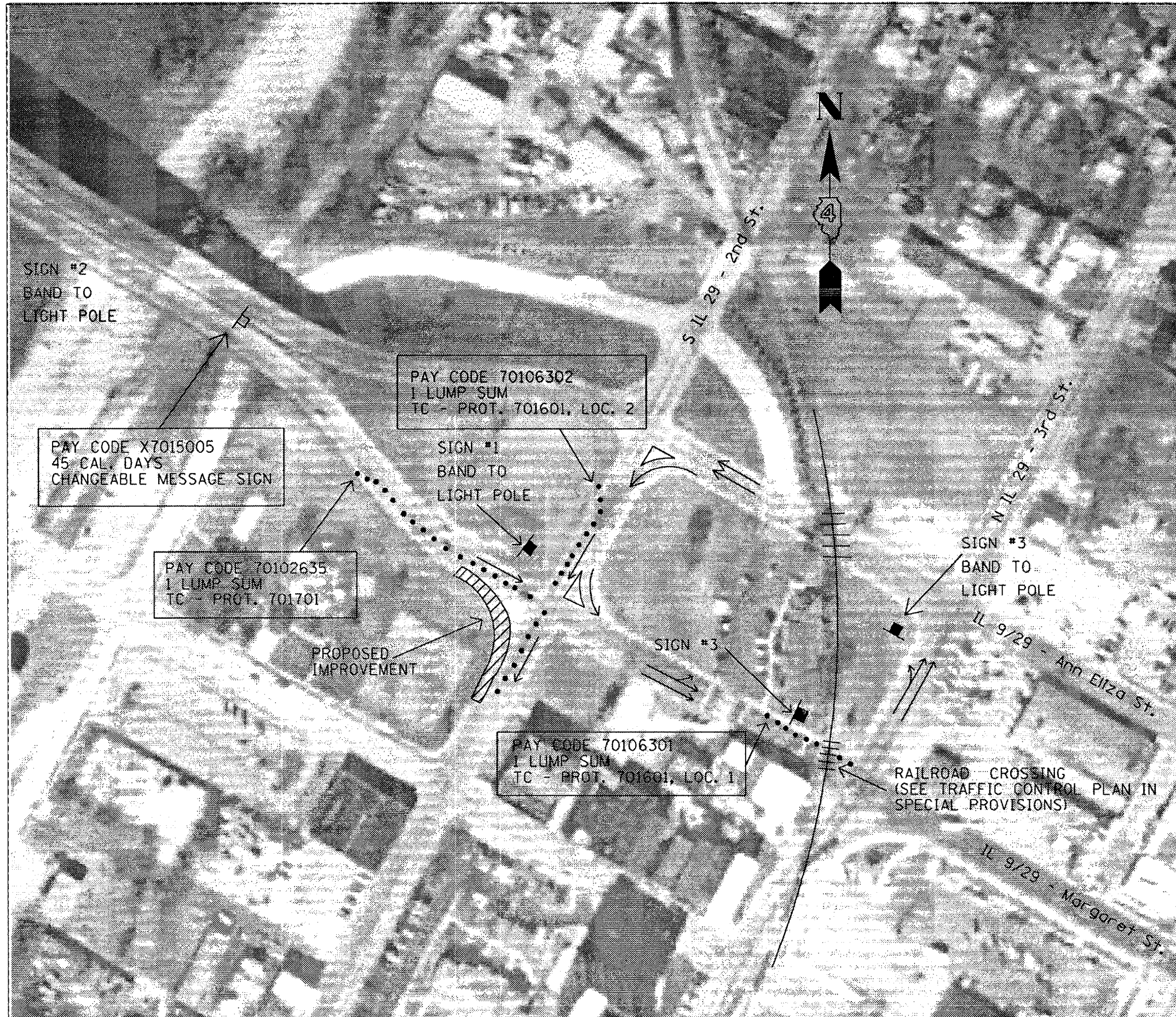
LEGEND

DETOUR SOUTH IL 29 #1	DETOUR SOUTH IL 29 #2
DETOUR SOUTH IL 29 #3	

NOTES:

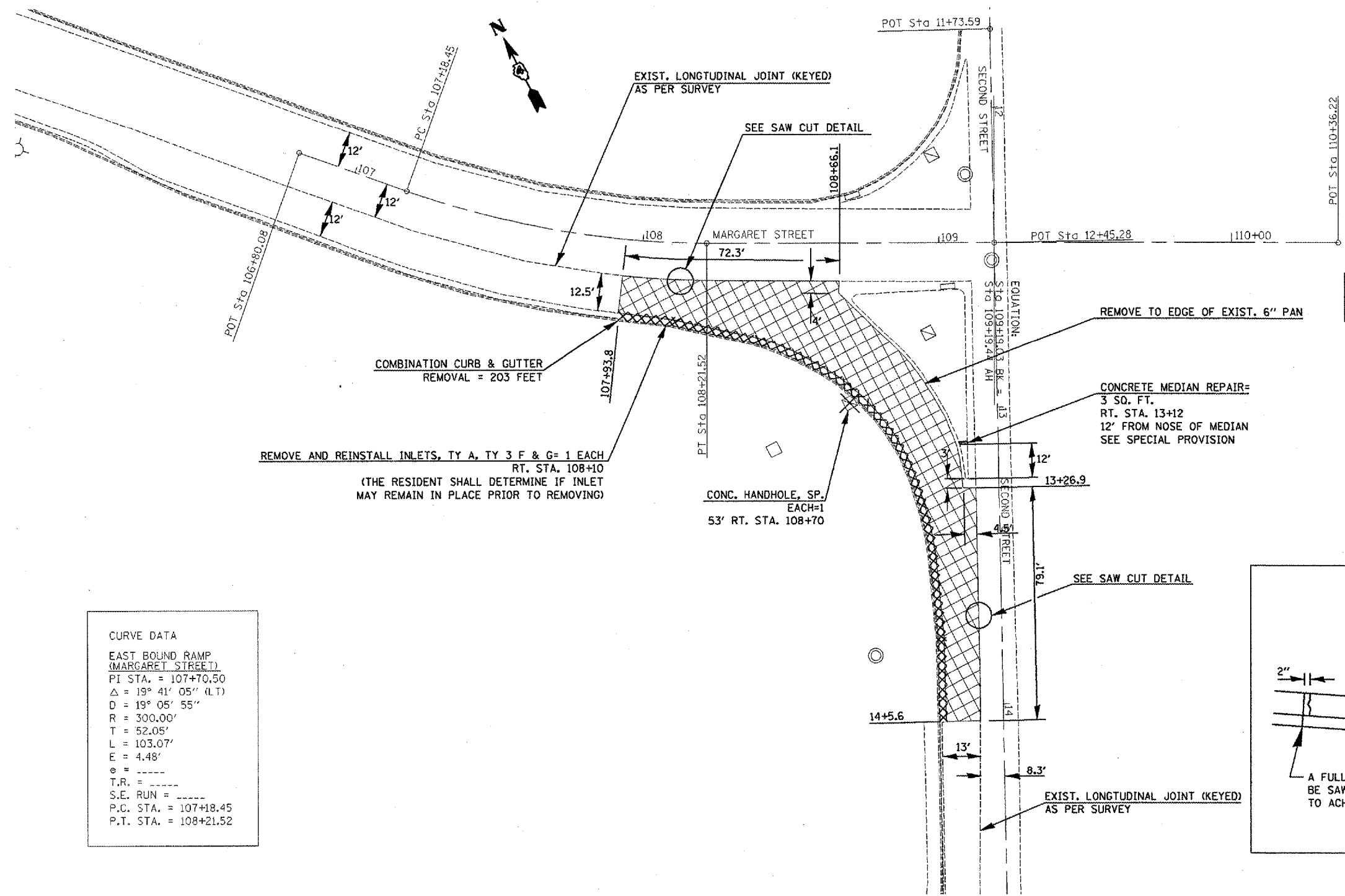
1. THE PROPOSED IMPROVEMENT IS LOCATED IN THE SW QUADRANT OF THE INTERSECTION OF MARGARET STREET WITH 2ND STREET. TO ACCOMMODATE THIS WORK A DETOUR ROUTE WILL BE ESTABLISHED AS SHOWN ON THIS SHEET AND AS DESCRIBED IN THE TRAFFIC CONTROL PLAN IN THE SPECIAL PROVISIONS.
2. ALL DETOUR SIGNS SHALL BE PROVIDED BY THE IDOT BUREAU OF OPERATIONS. THE CONTRACTOR SHALL CONTACT MR. BILL HARRMANN AT (309)370-7513 A MINIMUM OF 2 WEEKS PRIOR TO CONSTRUCTION.
3. THE CONTRACTOR SHALL BE RESPONSIBLE FOR THE PLACEMENT AND MAINTENANCE OF THE DETOUR SIGNAGE. THE LOCATIONS SHALL BE AS SHOWN IN THE PLANS OR AS DETERMINED BY THE RESIDENT. ANY LABOR OR MATERIALS NEEDED FOR THIS SHALL BE CONSIDERED INCLUDED IN THE COST OF THE RELATED TRAFFIC CONTROL ITEMS.
4. THE CONTRACTOR SHALL BE RESPONSIBLE FOR NOTIFYING PEKIN CITY PUBLIC WORKS 2 WEEKS PRIOR TO THE START OF CONSTRUCTION.

REVISIONS		ILLINOIS DEPARTMENT OF TRANSPORTATION
NAME	DATE	
		TRAFFIC MANAGEMENT PLAN
		NOT TO SCALE
		SCALE: _____
		DATE _____
		DRAWN BY _____
		CHECKED BY _____



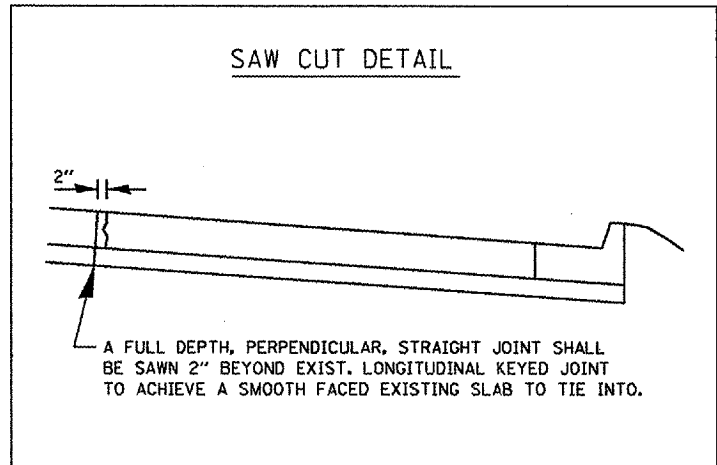
PLOT DATE = 04/11/07
 FILE NAME = #FILE#
 PLOT SCALE = 0.500000
 USER NAME = BUCHEM

CONTRACT NO. 68649			
F.A.P. RTE.	SECTION	COUNTY	TOTAL SHEETS
693	04 RADIUS IMPROV. 2007	TAZEWELL	10
STA.	TO STA.		
FED. ROAD DIST. NO. 4	ILLINOIS	FED. AID PROJECT	



EXIST. PCC PAVEMENT 10" TO BE REMOVED. THIS SHALL BE PAID FOR AS PAVEMENT REMOVAL= 402 SQ. YD. INCLUDES COST OF REMOVING EXIST. STABILIZED SUB-BASE 4" AS SPECIFIED IN ARTICLE 440.01 OF THE STANDARD SPECIFICATIONS.

CURVE DATA
 EAST BOUND RAMP
 (MARGARET STREET)
 PI STA. = 107+70.50
 $\Delta = 19^\circ 41' 05''$ (LT)
 $D = 19^\circ 05' 55''$
 $R = 300.00'$
 $T = 52.05'$
 $L = 103.07'$
 $E = 4.48'$
 $\theta = \text{-----}$
 $T.R. = \text{-----}$
 $S.E. RUN = \text{-----}$
 P.C. STA. = 107+18.45
 P.T. STA. = 108+21.52



REVISIONS	
NAME	DATE

ILLINOIS DEPARTMENT OF TRANSPORTATION

REMOVAL ITEMS

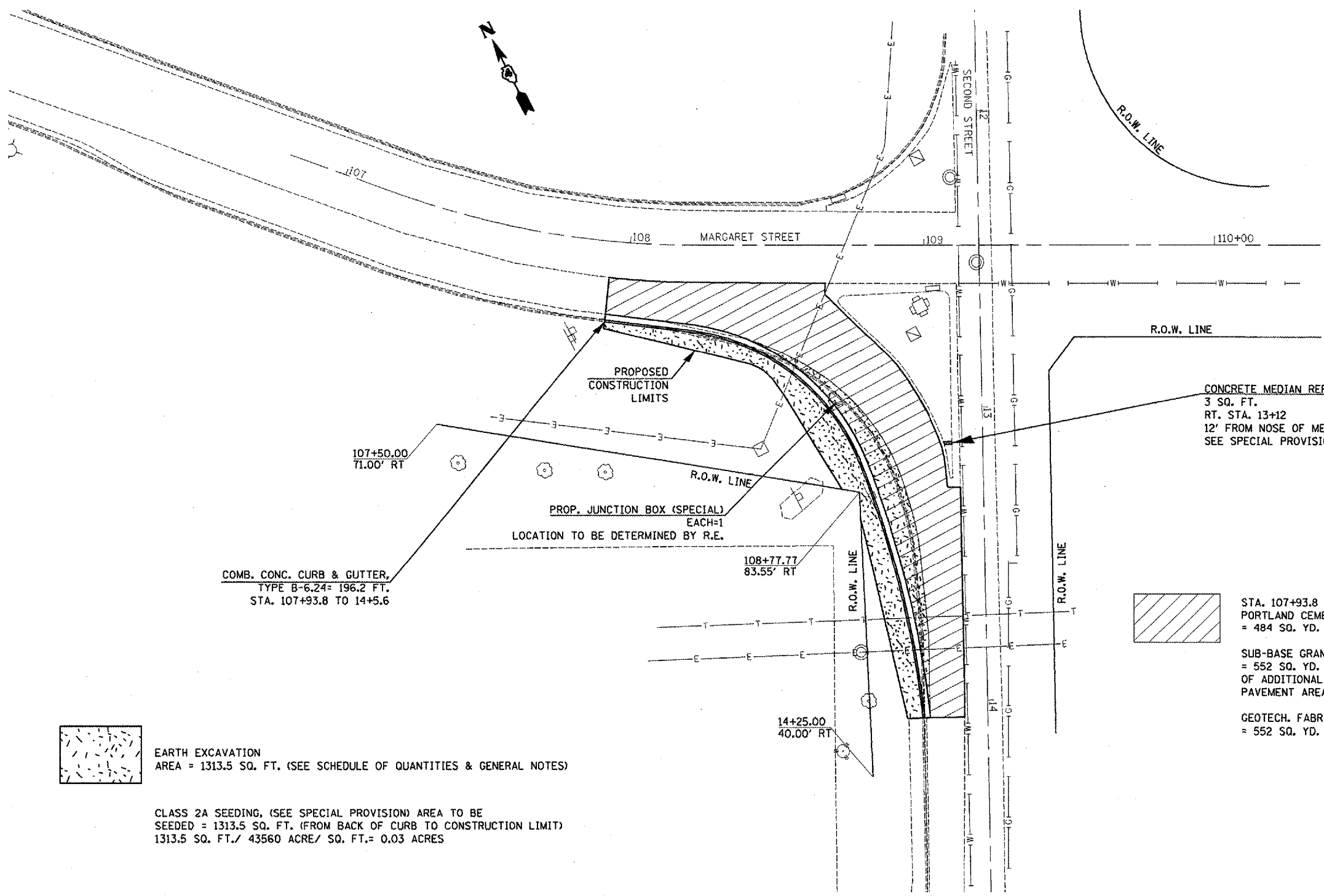
SCALE: VERT. _____
 DATE: _____

DRAWN BY _____
 CHECKED BY _____

PLOT DATE = 2/15/2007
 FILE NAME = c:\projects\112\sheet\sheet.dgn
 PLOT SCALE = 48.0000 / IN.
 USER NAME = gdamman

F.A.P. RTE.	SECTION	COUNTY	TOTAL SHEETS	SHEET NO.
693	D4 RADIUS IMPROV. 2007	TAZEWELL		//
STA.		TO STA.		
FED. ROAD DIST. NO. 4		ILLINOIS FED. AID PROJECT		

NOTES
 A TYPE A FINAL FINISH SHALL BE USED AS SPECIFIED IN ARTICLE 420.09(EX1) OF THE STANDARD SPECIFICATIONS



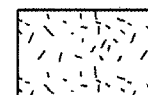
COMB. CONC. CURB & GUTTER,
 TYPE B-6.24= 196.2 FT.
 STA. 107+93.8 TO 14+5.6

CONCRETE MEDIAN REPAIR=
 3 SQ. FT.
 RT. STA. 13+12
 12' FROM NOSE OF MEDIAN
 SEE SPECIAL PROVISION

STA. 107+93.8 TO 14+5.6 (2ND ST.)
 PORTLAND CEMENT CONCRETE PAVEMENT 10" (JOINTED)
 = 484 SQ. YD.

SUB-BASE GRANULAR MATERIAL, TYPE B, 6"
 = 552 SQ. YD. (SEE TYPICAL FOR EXPLANATION
 OF ADDITIONAL QUANTITY AS COMPARED TO
 PAVEMENT AREA)

GEOTECH. FABRIC FOR GROUND STABILIZATION
 = 552 SQ. YD.

 EARTH EXCAVATION
 AREA = 1313.5 SQ. FT. (SEE SCHEDULE OF QUANTITIES & GENERAL NOTES)

CLASS 2A SEEDING, (SEE SPECIAL PROVISION) AREA TO BE
 SEEDED = 1313.5 SQ. FT. (FROM BACK OF CURB TO CONSTRUCTION LIMIT)
 1313.5 SQ. FT./ 43560 ACRE/ SQ. FT.= 0.03 ACRES



REVISIONS	
NAME	DATE

ILLINOIS DEPARTMENT OF TRANSPORTATION

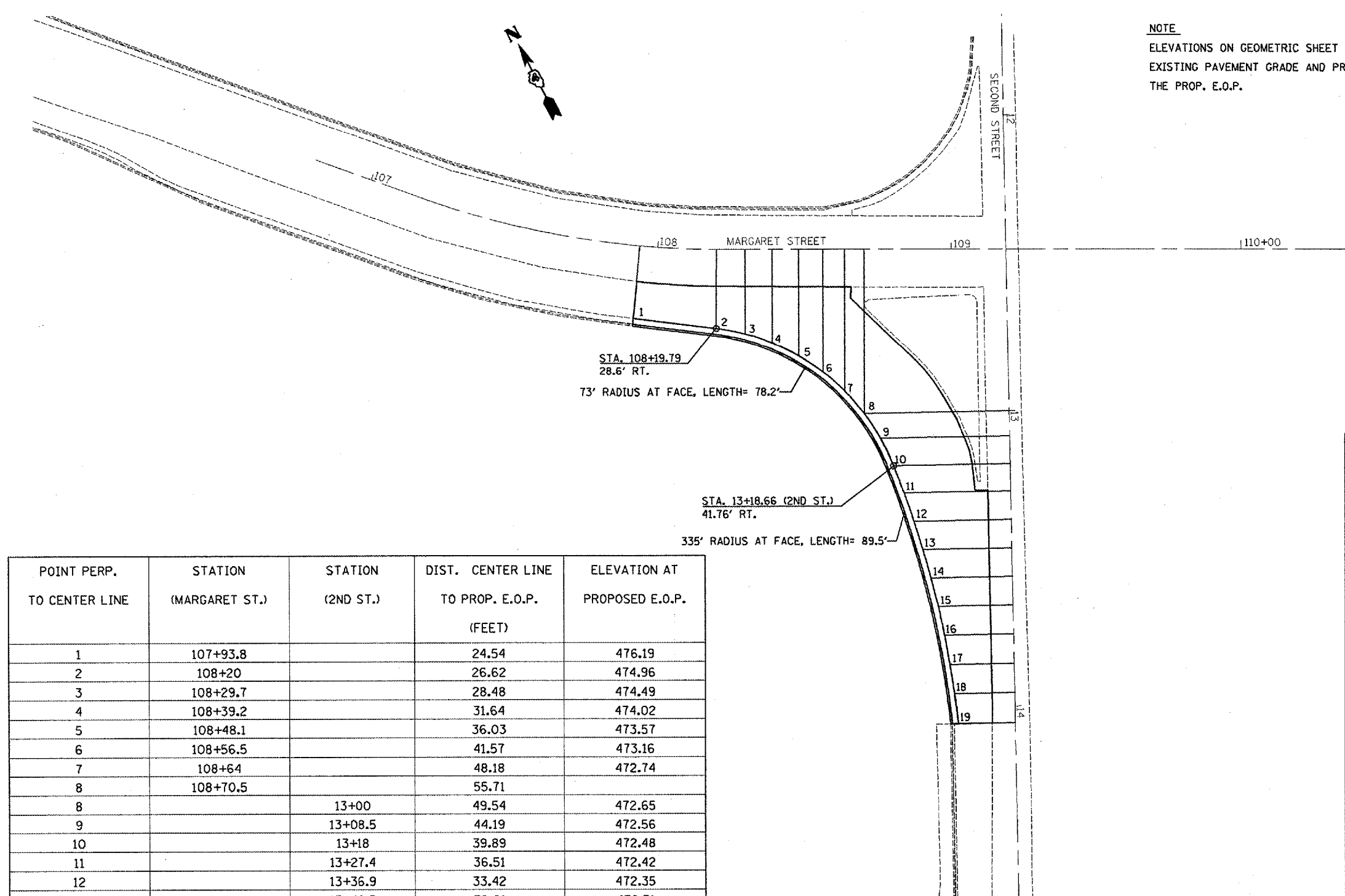
**PROPOSED IMPROVMENT
 AND EXISTING UTILITIES**

SCALE: VERT.
 HORIZ.
 DATE

DRAWN BY
 CHECKED BY

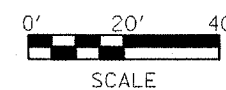
F.A.P. RTE.	SECTION	COUNTY	TOTAL SHEETS	SHEET NO.
693	04 RADIUS IMPROV. 2007	TAZEWELL		12
STA.		TO STA.		
FED. ROAD DIST. NO. 4		ILLINOIS FED. AID PROJECT		

NOTE
 ELEVATIONS ON GEOMETRIC SHEET WERE DEVELOPED BY MATCHING EXISTING PAVEMENT GRADE AND PROJECTING THOSE GRADES TO THE PROP. E.O.P.



POINT PERP. TO CENTER LINE	STATION (MARGARET ST.)	STATION (2ND ST.)	DIST. CENTER LINE TO PROP. E.O.P. (FEET)	ELEVATION AT PROPOSED E.O.P.
1	107+93.8		24.54	476.19
2	108+20		26.62	474.96
3	108+29.7		28.48	474.49
4	108+39.2		31.64	474.02
5	108+48.1		36.03	473.57
6	108+56.5		41.57	473.16
7	108+64		48.18	472.74
8	108+70.5		55.71	
8		13+00	49.54	472.65
9		13+08.5	44.19	472.56
10		13+18	39.89	472.48
11		13+27.4	36.51	472.42
12		13+36.9	33.42	472.35
13		13+46.5	30.61	472.31
14		13+56.2	28.08	472.28
15		13+65.9	25.84	472.25
16		13+75.7	23.89	472.19
17		13+85.6	22.24	472.13
18		13+95.5	20.87	472.06
19		14+05.6	19.79	472.00

POINT PERP. TO CENTER LINE	STATION/OFFSET PROP. B.O.C.	ELEVATION AT PROP. TOP B.O.C.
1	107+93.77 (27.12')	476.57
2	108+19.67 (29.18')	475.34
3	108+28.90 (30.98')	474.87
4	108+37.99 (34.03')	474.4
5	108+46.60 (38.27')	473.95
6	108+54.57 (43.62')	473.54
7	108+61.77 (50.00')	473.12
8		
8	13+01.91(51.62')	473.03
9	13+10.01 (46.46')	472.95
10	13+19.05 (42.31')	472.86
11	13+28.37 (38.96')	472.80
12	13+37.79 (35.88')	472.73
13	13+47.30 (33.09')	472.69
14	13+56.89 (30.59')	472.67
15	13+66.55 (28.37')	472.63
16	13+76.27 (26.43')	472.57
17	13+86.04 (24.79')	472.51
18	13+95.85 (23.44')	472.45
19	14+05.59 (22.38')	472.38



REVISIONS	
NAME	DATE

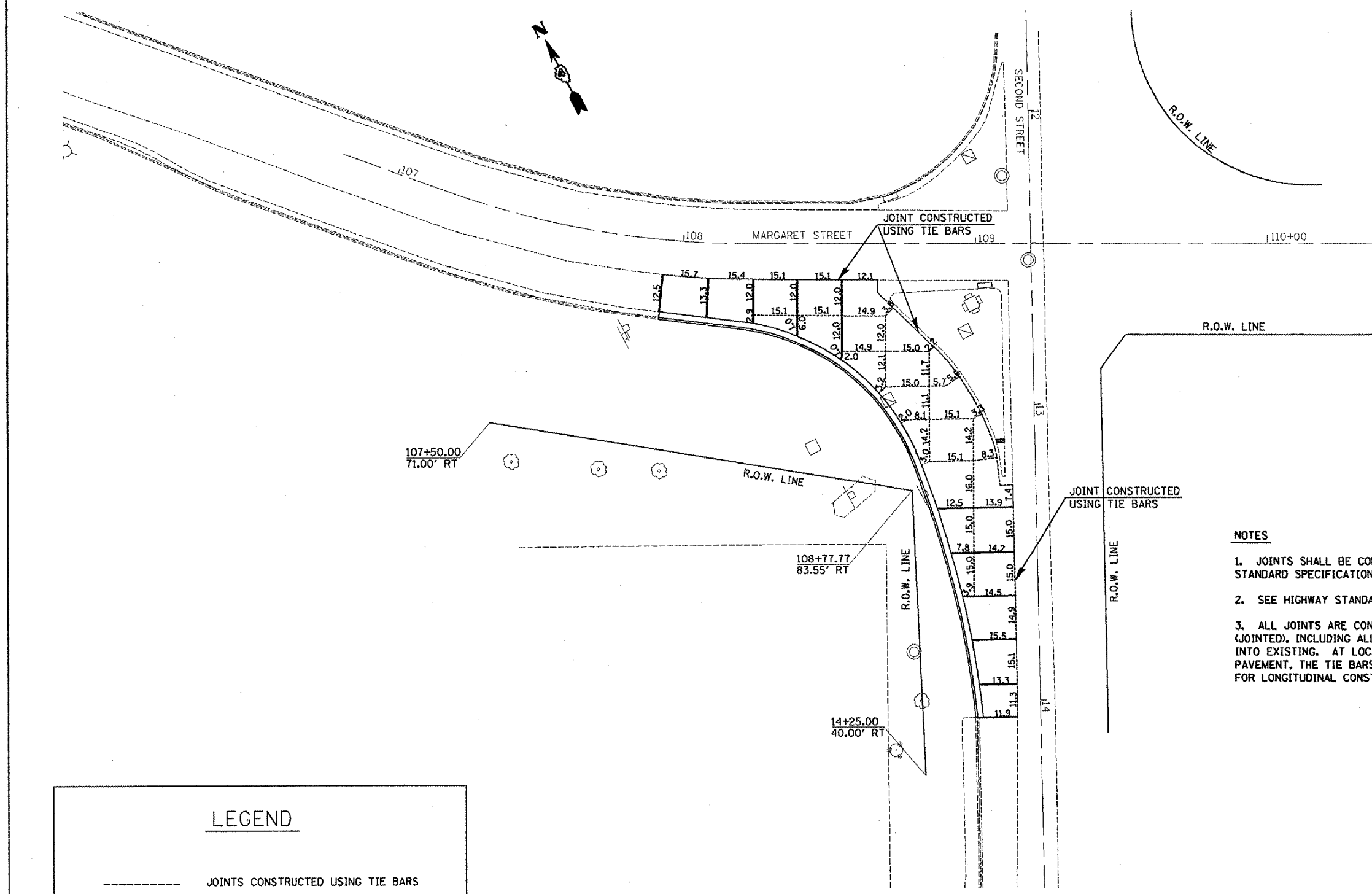
ILLINOIS DEPARTMENT OF TRANSPORTATION

PROPOSED GEOMETRICS

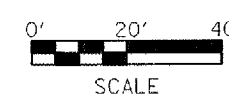
SCALE: VERT. HORIZ. DATE

DRAWN BY CHECKED BY

F.A. RTE.	SECTION	COUNTY	TOTAL SHEETS	SHEET NO.
693	DM RAD. IMPR. '07	TAZEWLL		13
STA.		TO STA.		
FED. ROAD DIST. NO.	ILLINOIS	FED. AID PROJECT		



- NOTES**
1. JOINTS SHALL BE CONSTRUCTED AS PER SECTION 420, ARTICLE 420.05 OF THE STANDARD SPECIFICATIONS FOR ROAD AND BRIDGE CONSTRUCTION.
 2. SEE HIGHWAY STANDARDS 420001 AND 420101 FOR ADDITIONAL JOINT DETAILS.
 3. ALL JOINTS ARE CONSIDERED INCLUDED IN THE COST OF PCC PAVEMENT 10" (JOINTED), INCLUDING ALL LABOR AND MATERIALS NEEDED TO TIE PROPOSED PAVEMENT INTO EXISTING. AT LOCATIONS WHERE TIE BARS ARE USED TO TIE INTO EXISTING PAVEMENT, THE TIE BARS SHALL BE NO. 6 AT 24" CENTERS IN ACCORDANCE WITH DETAILS FOR LONGITUDINAL CONSTRUCTION JOINT SHOWN ON STD. 420001.



LEGEND	
-----	JOINTS CONSTRUCTED USING TIE BARS
————	JOINTS CONSTRUCTED USING DOWEL BARS

PLOT DATE = 2/15/2007
 FILE NAME = c:\pcc\proj\12\pcc\detail.dgn
 PLOT SCALE = 40:8000 / IN.
 USER NAME = graham

REVISIONS	
NAME	DATE

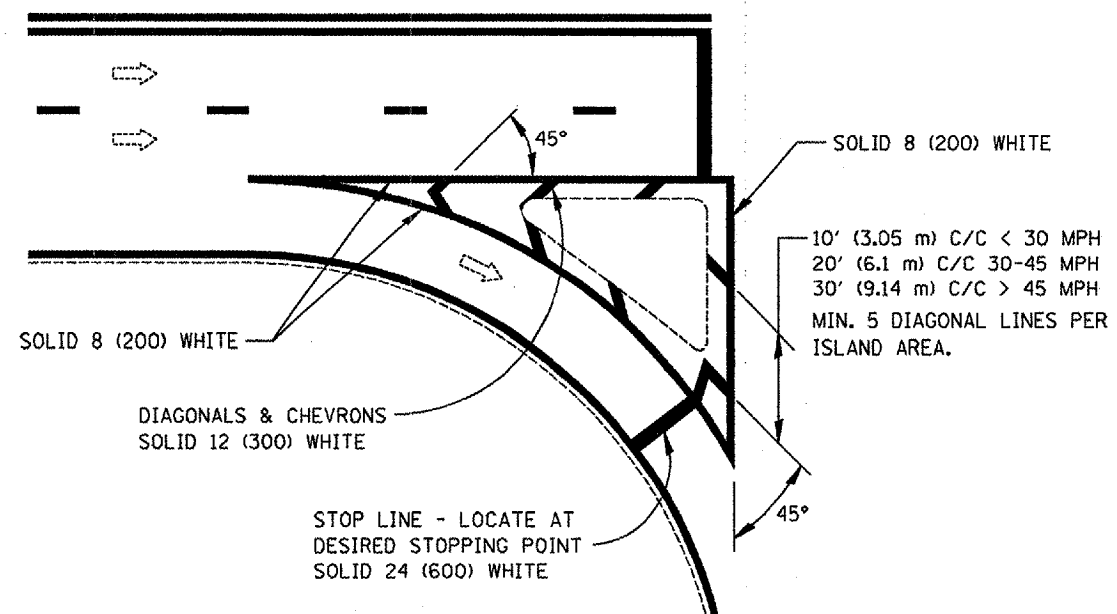
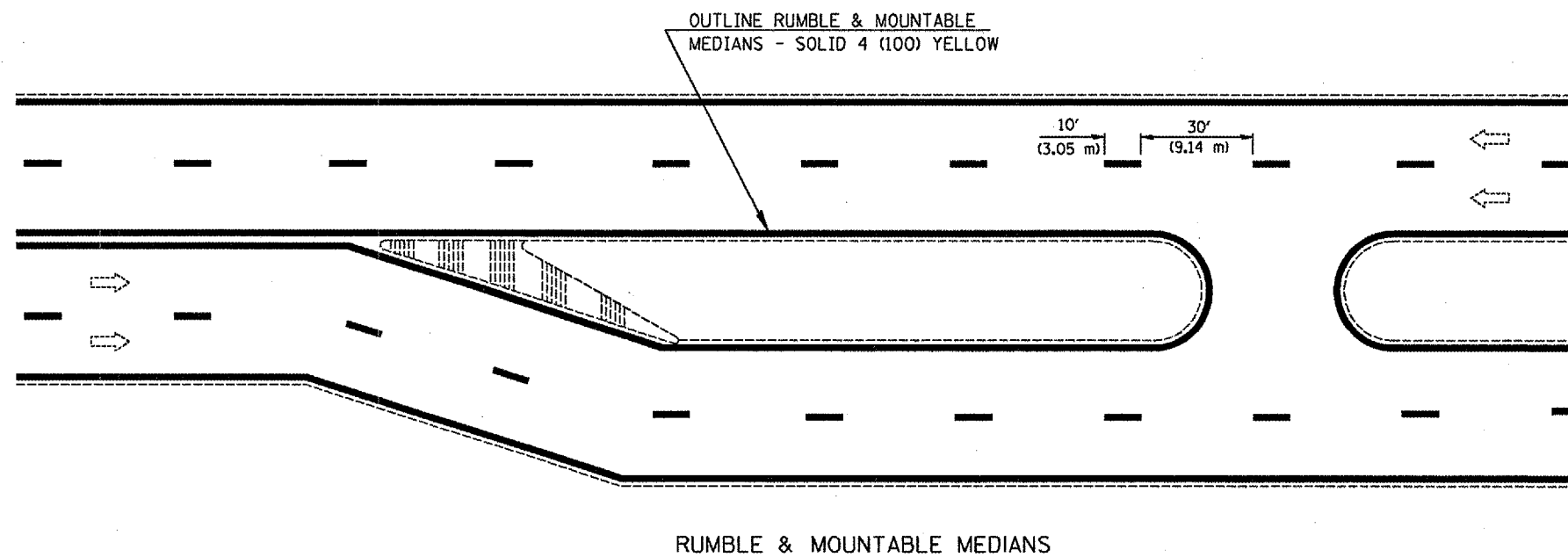
ILLINOIS DEPARTMENT OF TRANSPORTATION

JOINT DETAIL

SCALE: VERT. _____
 DATE _____

DRAWN BY _____
 CHECKED BY _____

F.A.P. RTE.	SECTION	COUNTY	TOTAL SHEETS	SHEET NO.
693	D4 RAD. IMPROV. 2007	TAZEWELL		15
STA.		TO STA.		
FED. ROAD DIST. NO.	ILLINOIS	FED. AID PROJECT		



RIGHT TURN ISLAND MARKING
AND
CHANNELIZATION

All dimensions are in inches (millimeters) unless otherwise noted.

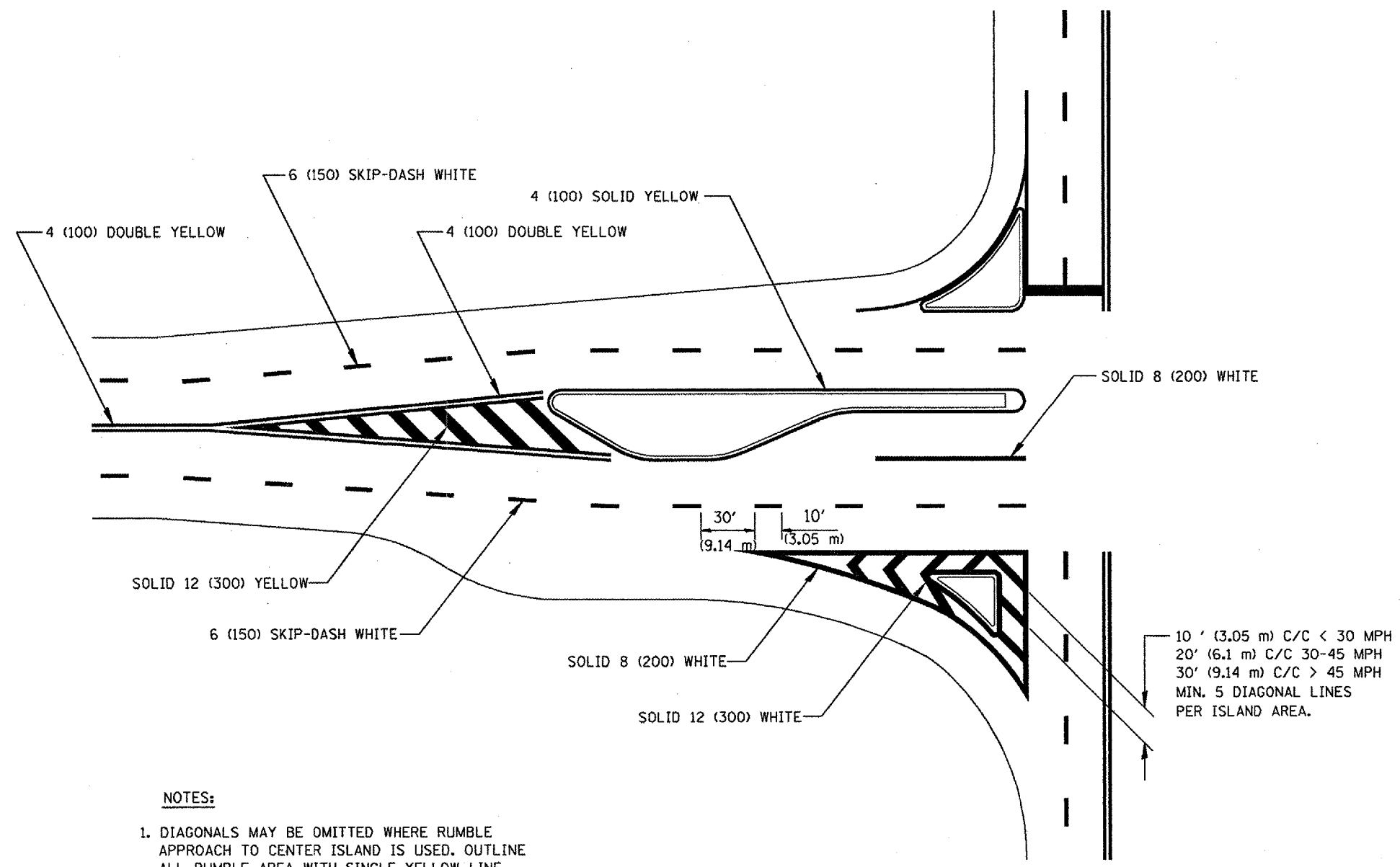
REVISIONS	
NAME	DATE

ILLINOIS DEPARTMENT OF TRANSPORTATION

ILLINOIS DEPARTMENT OF TRANSPORTATION
DISTRICT 4 PAVEMENT MARKING DETAILS

SCALE: NOT TO SCALE
DATE 11 - 05
DRAWN BY
CHECKED BY

CONTRACT NO. 68649				
F.A.P. RTE.	SECTION	COUNTY	TOTAL SHEETS	SHEET NO.
693	D4 RAD. IMPROV. 2007	TAZEWELL		110
STA.	TO STA.			
FED. ROAD DIST. NO.	ILLINOIS	FED. AID PROJECT		



NOTES:

1. DIAGONALS MAY BE OMITTED WHERE RUMBLE APPROACH TO CENTER ISLAND IS USED. OUTLINE ALL RUMBLE AREA WITH SINGLE YELLOW LINE.
2. SEE FIGURE 3B-13 OF THE MUTCD FOR RECOMMENDED TAPER LENGTHS.

**OFF-SET ISLANDS
AND
ISLAND APPROACH MARKINGS**

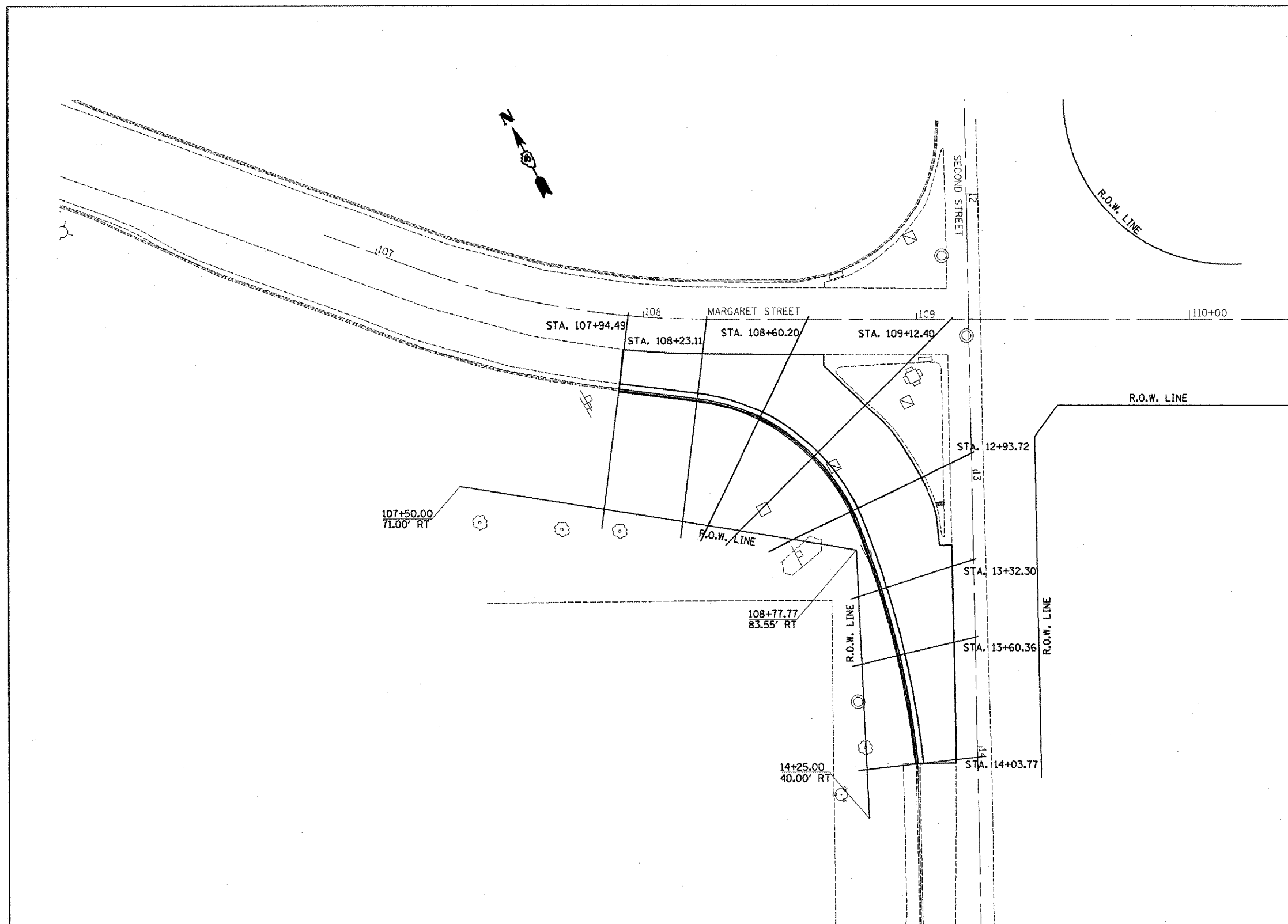
REVISIONS	
NAME	DATE

ILLINOIS DEPARTMENT OF TRANSPORTATION
ILLINOIS DEPARTMENT OF TRANSPORTATION
DISTRICT 4 PAVEMENT MARKING DETAILS
SCALE: NOT TO SCALE
DATE 11 - 05
DRAWN BY
CHECKED BY

All dimensions are in inches (millimeters) unless otherwise noted.

PLOT DATE = 2/15/2007
FILE NAME = c:\projects\112\pavement\details\adgn
PLOT SCALE = 1/8" = 1'-0"
USER NAME = gtdunham

F.A.P. RTE.	SECTION	COUNTY	TOTAL SHEETS	SHEET NO.
693	D4 RAD. IMPR. '07	TAZEWELL		19
STA.		TO STA.		
FED. ROAD DIST. NO.	ILLINOIS	FED. AID PROJECT		



PLOT DATE = 2/15/2007
 FILE NAME = s:\p\projects\1125\plan\detail.dgn
 PLOT SCALE = 48.0000 / IN.
 USER NAME = ghindman

REVISIONS	
NAME	DATE

ILLINOIS DEPARTMENT OF TRANSPORTATION

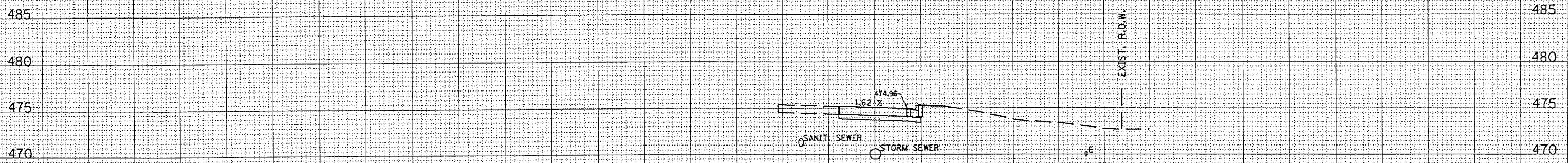
CROSS SECTION LOCATIONS

SCALE: VERT. _____
 HORIZ. _____

DRAWN BY _____
 CHECKED BY _____

F.A.P. RTE.	SECTION	COUNTY	TOTAL SHEETS
693	D4 RADIUS IMPROV. 2007	TAZEWELL	20
STA.		TO STA.	
FED. ROAD DIST. NO.		ILLINOIS FED. AID PROJECT	

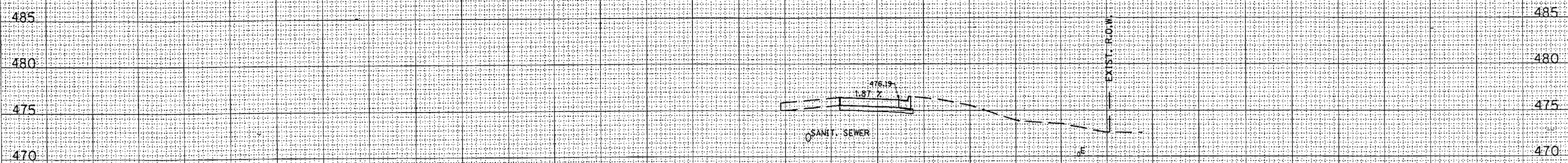
150 140 130 120 110 100 90 80 70 60 50 40 30 20 10 0 10 20 30 40 50 60 70 80 90 100 110 120 130



CUT = 0.0
FILL = 1.3

108+23.11

UNLESS ELEVATIONS ARE SHOWN--
ALL UTILITY LOCATIONS SHOWN ON THE CROSS-SECTIONS
ARE BASED ON THE APPROXIMATE DEPTH SUPPLIED BY
THE UTILITY COMPANY



CUT = 0.0
FILL = 0.0

107+94.49

150 140 130 120 110 100 90 80 70 60 50 40 30 20 10 0 10 20 30 40 50 60 70 80 90 100 110 120 130

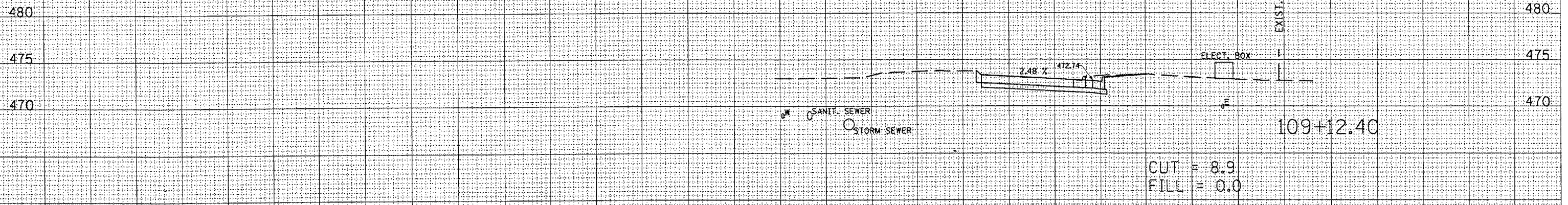
DATE	BY
DATE	BY
DATE	BY

DATE	BY
DATE	BY
DATE	BY

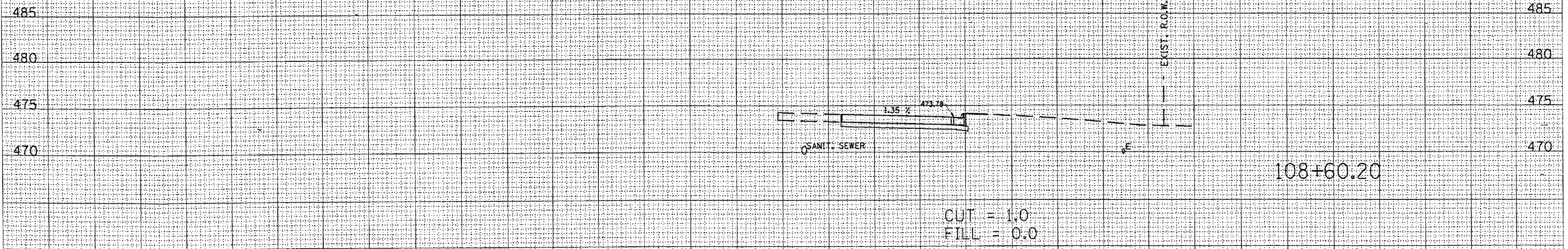
PLOT DATE = 1/24/2007
PLOT SCALE = 1" = 20.00' / IN.
USER NAME = ghdwasa

F.A. P. RTE.		SECTION	COUNTY	TOTAL SHEETS	CONTRACT NO.
693		04 RADIIUS IMPROV. 2007	TAZEWELL	21	68649
STA.		TO STA.			
FED. ROAD DIST. NO.		ILLINOIS	FED. AID PROJECT		

150 140 130 120 110 100 90 80 70 60 50 40 30 20 10 0 10 20 30 40 50 60 70 80 90 100 110 120 130



UNLESS ELEVATIONS ARE SHOWN--
ALL UTILITY LOCATIONS SHOWN ON THE CROSS-SECTIONS
ARE BASED ON THE APPROXIMATE DEPTH SUPPLIED BY
THE UTILITY COMPANY



150 140 130 120 110 100 90 80 70 60 50 40 30 20 10 0 10 20 30 40 50 60 70 80 90 100 110 120 130

DATE	BY
SURVEYED	NO.
PLOTTED	
TEMPLATE	
AREAS	
CHECKED	

DATE	BY
SURVEYED	NO.
PLOTTED	
TEMPLATE	
AREAS	
CHECKED	

PLOT DATE = 1/24/2007
PLOT SCALE = 1/4" = 10'-0"
USER NAME = gshuman

