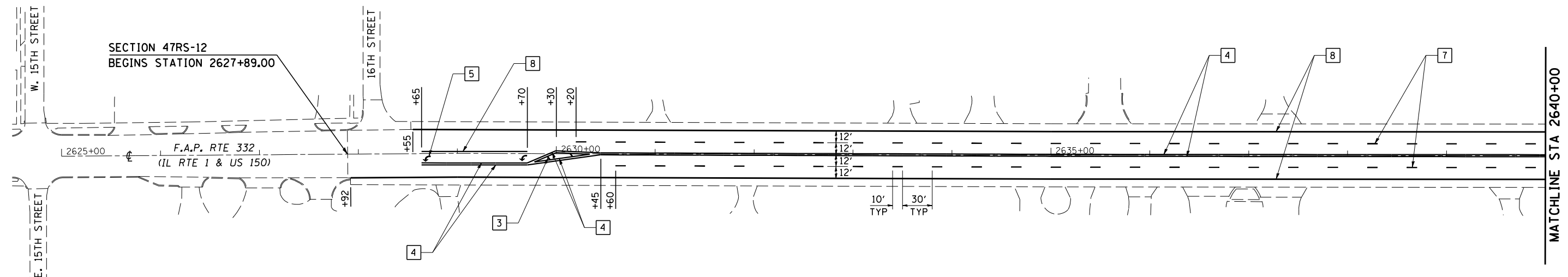


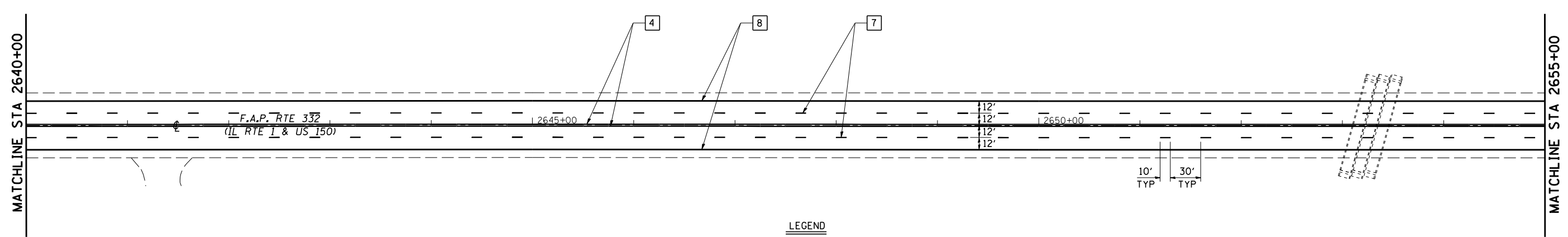
F.A.P. RTE.	SECTION	COUNTY	TOTAL SHEETS	SHEET NO.
332	47RS-12	VERMILION	24	17
STA. 2625+00		TO STA. 2655+00		
FED. ROAD DIST. NO.	ILLINOIS	FED. AID PROJECT		

SHEET 1 OF 4



LEGEND

- 3 12" DIAGONAL (YELLOW)
- 4 4" DOUBLE YELLOW (NARROW)
- 5 LEFT TURN ARROW
- 7 4" SKIP-DASH (WHITE)
- 8 4" SOLID (WHITE)

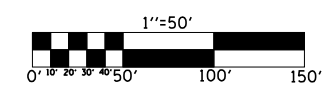


LEGEND

- 4 4" DOUBLE YELLOW (NARROW)
- 7 4" SKIP-DASH (WHITE)
- 8 4" SOLID (WHITE)

SHEET 1 OF 4

ILLINOIS DEPARTMENT OF TRANSPORTATION
PAVEMENT STRIPING DETAILS
 FAP ROUTE 332 (US 150)
 SECTION 47RS-12
 VERMILION COUNTY



SCALE: 1" = 50'
 DATE: 01/10/2007
 DRAWN BY: CADD
 CHECKED BY:

PLOT DATE : 2/5/2007
 FILE NAME : c:\projects\4594104\70399\pavmg.dgn
 PLOT SCALE : 1/8"=50' / IN.
 USER NAME : philipj