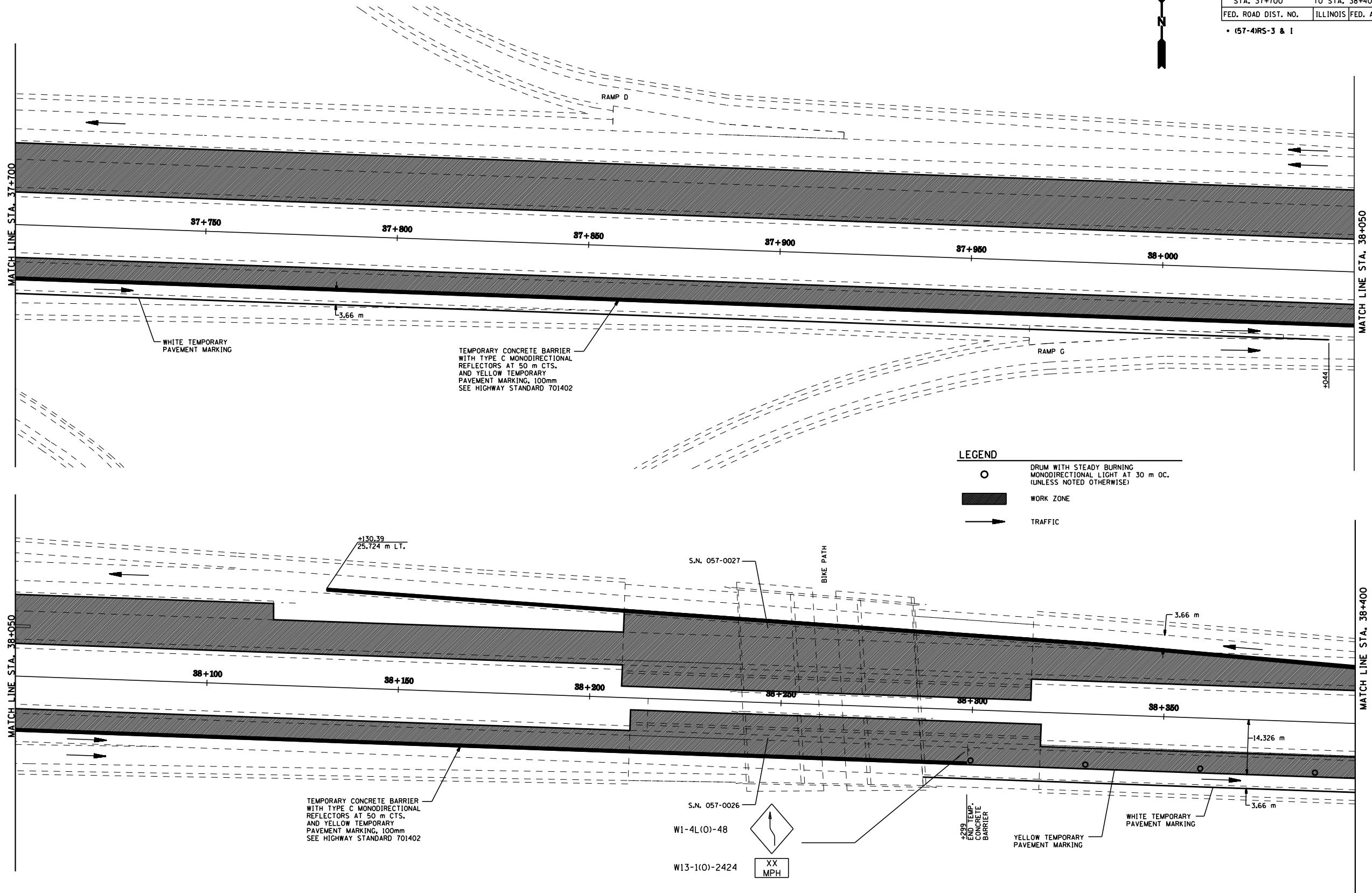


F.A.I. RTE.	SECTION	COUNTY	TOTAL SHEETS	SHEET NO.
55		McLEAN	87	35
STA. 37+700		TO STA. 38+400		
FED. ROAD DIST. NO.		ILLINOIS	FED. AID PROJECT	

• (57-4)RS-3 & I



LEGEND

- DRUM WITH STEADY BURNING MONODIRECTIONAL LIGHT AT 30 m OC. (UNLESS NOTED OTHERWISE)
- WORK ZONE
- TRAFFIC

TEMPORARY CONCRETE BARRIER WITH TYPE C MONODIRECTIONAL REFLECTORS AT 50 m CTS. AND YELLOW TEMPORARY PAVEMENT MARKING, 100mm SEE HIGHWAY STANDARD 701402

S.N. 057-0026
W1-4L(O)-48

S.N. 057-0027
BIKE PATH

W13-1(O)-2424

END TEMP. CONCRETE BARRIER
YELLOW TEMPORARY PAVEMENT MARKING
WHITE TEMPORARY PAVEMENT MARKING

STAGE CONSTRUCTION DETAILS - STAGE 1
F.A.I. 55
SECTION (57-4)RS-3 & I
MCLEAN COUNTY