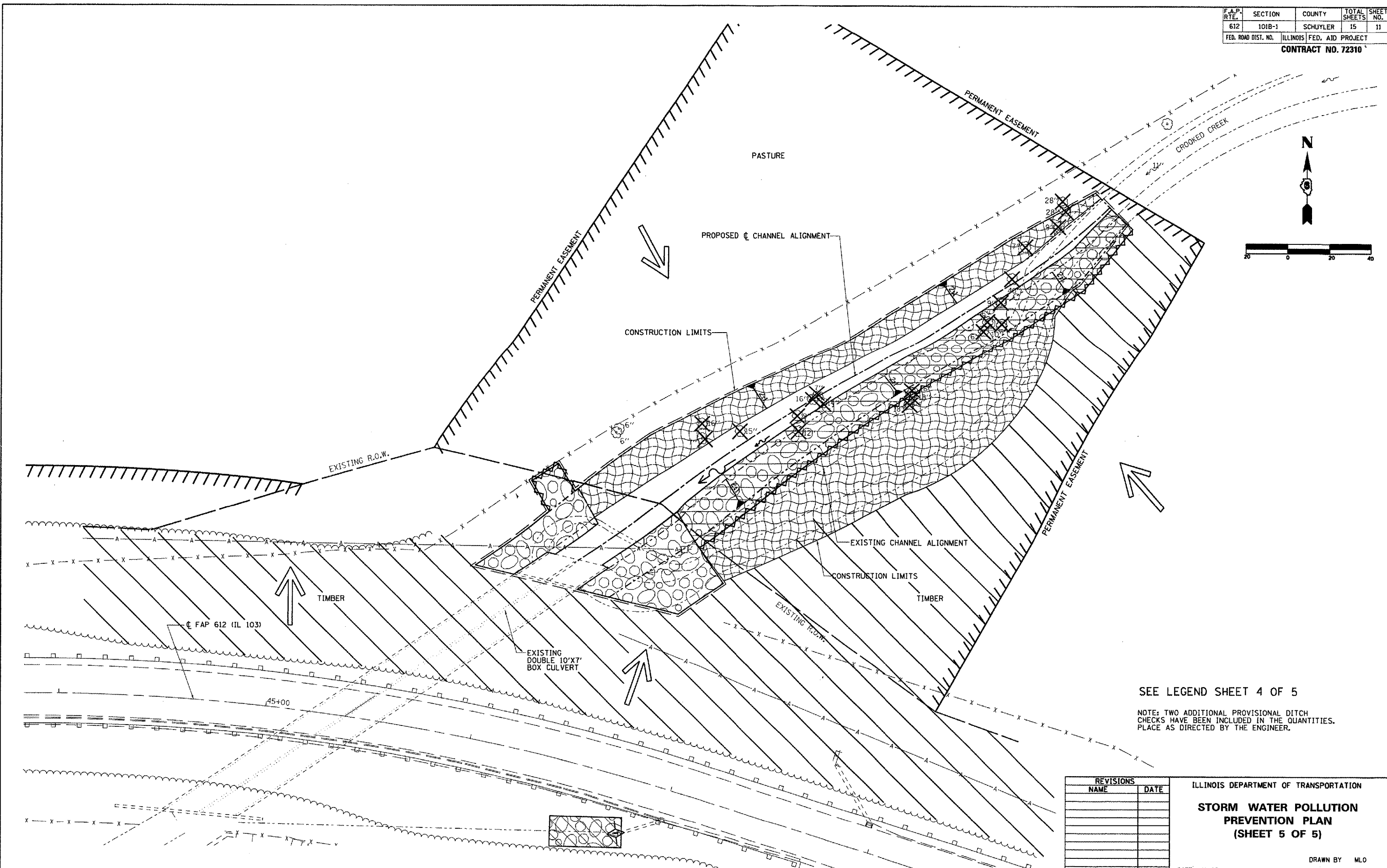


F.A.P. RTE.	SECTION	COUNTY	TOTAL SHEETS	SHEET NO.
612	101B-1	SCHUYLER	15	11
FED. ROAD DIST. NO.		ILLINOIS	FED. AID PROJECT	
CONTRACT NO. 72310				



SEE LEGEND SHEET 4 OF 5

NOTE: TWO ADDITIONAL PROVISIONAL DITCH CHECKS HAVE BEEN INCLUDED IN THE QUANTITIES. PLACE AS DIRECTED BY THE ENGINEER.

REVISIONS	
NAME	DATE

ILLINOIS DEPARTMENT OF TRANSPORTATION
STORM WATER POLLUTION PREVENTION PLAN
 (SHEET 5 OF 5)

DATE 11/03
 DRAWN BY MLO
 CHECKED BY SJK