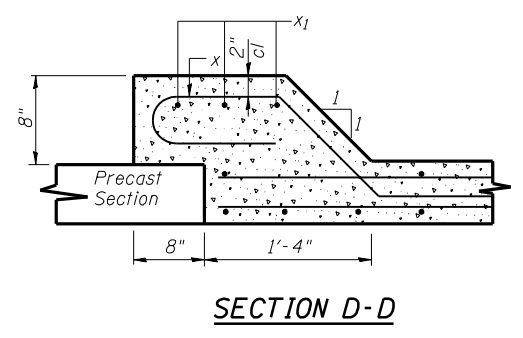
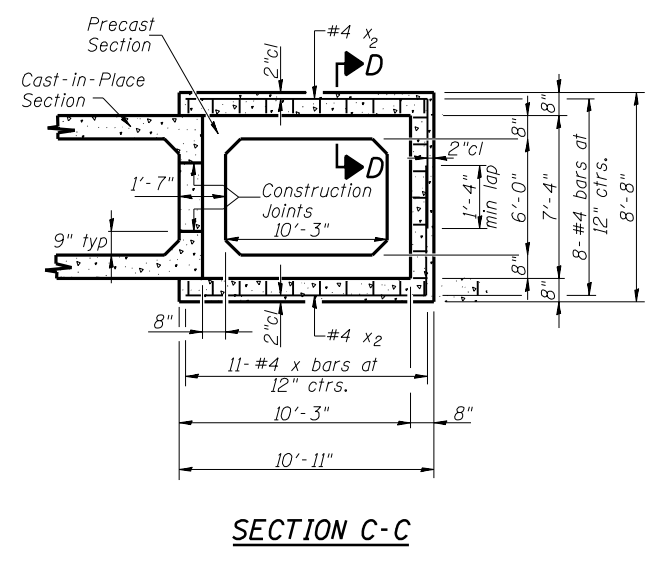
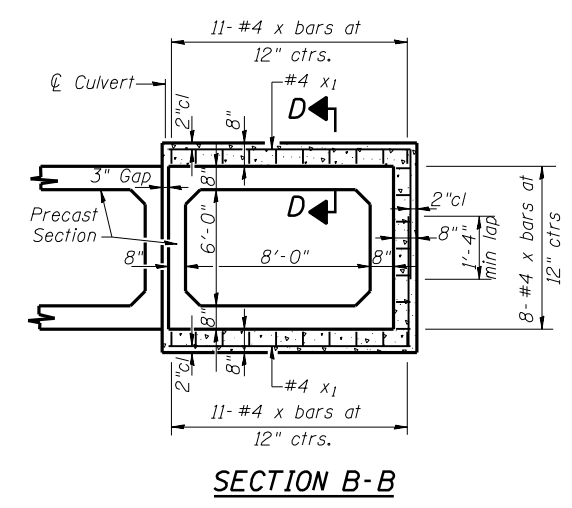
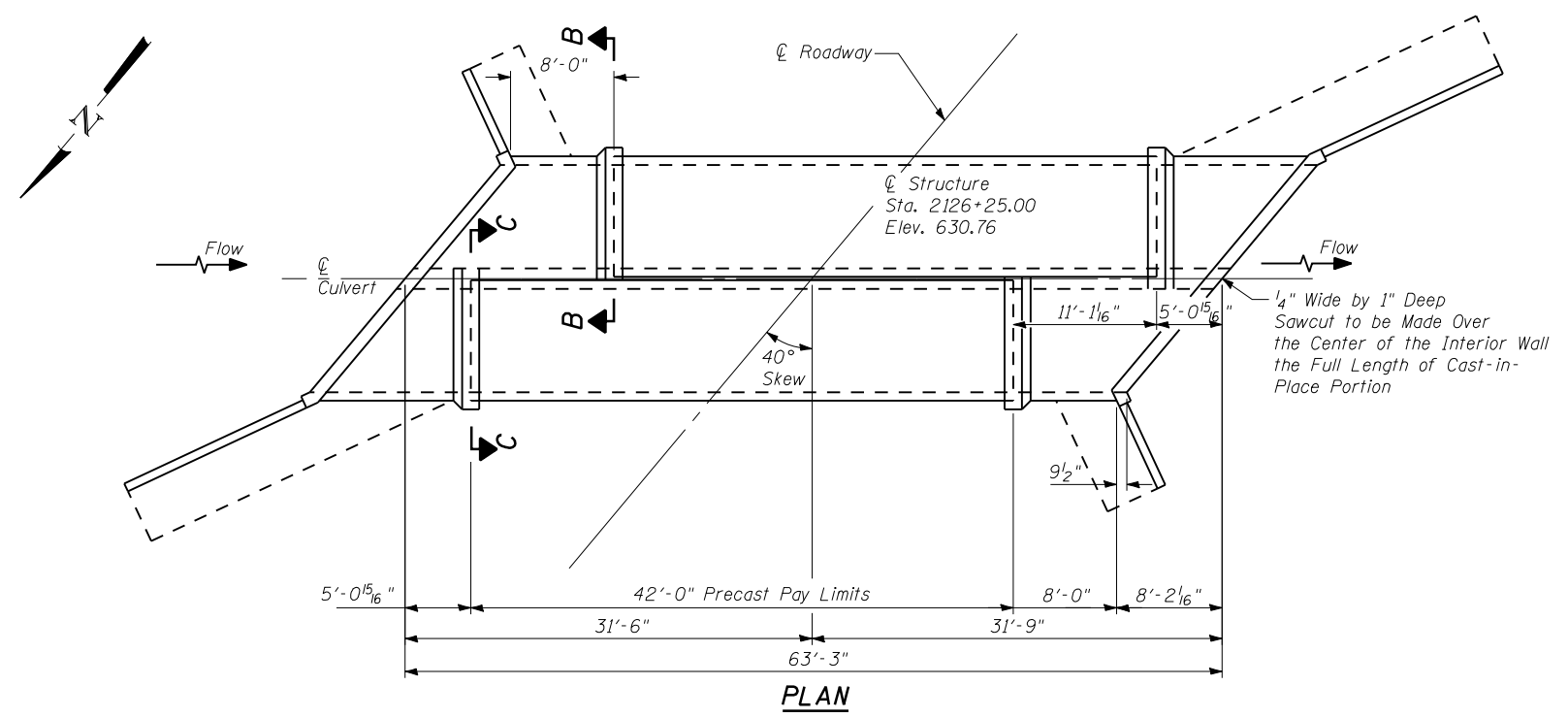
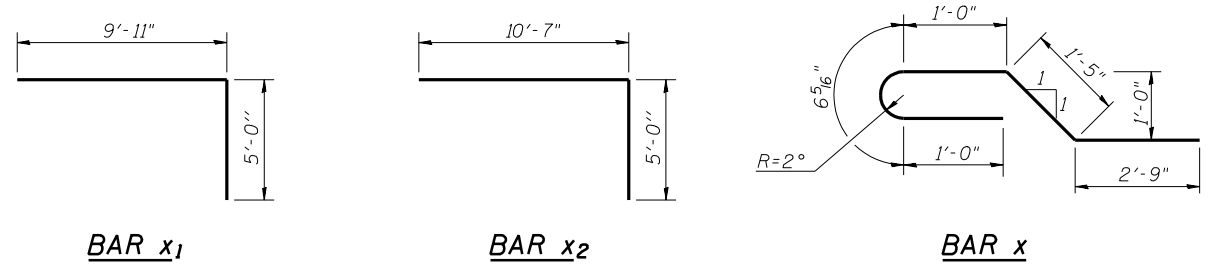


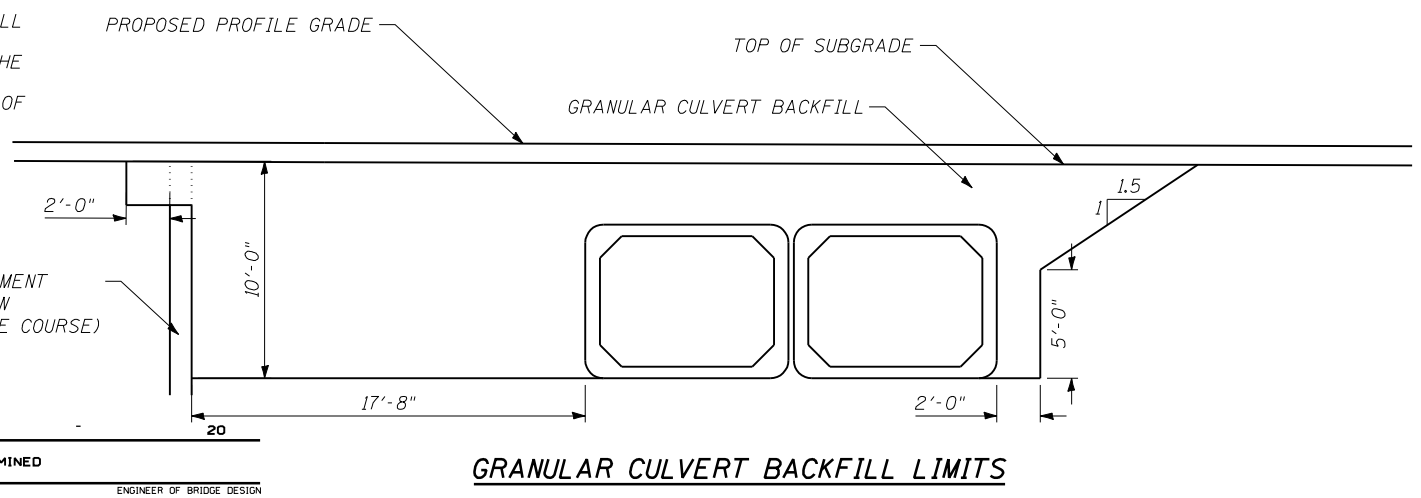
STATE OF ILLINOIS
DEPARTMENT OF TRANSPORTATION

ROUTE NO.	SECTION	COUNTY	TOTAL SHEETS	SHEET NO.
SBI 4	F(B-3)	MACOUPIN	27	21
FED. ROAD DIST. NO. 7	ILLINOIS	FED. AID PROJECT-		

SHEET NO. 5
6 SHEETS



NOTE:
PLACE GRANULAR CULVERT BACKFILL WITHIN THE EXCAVATED AREA INDICATED, OUTSIDE AND ABOVE THE PROPOSED BOX CULVERT, TO A DISTANCE 2' OUTSIDE THE EDGES OF PAVEMENT AND CAP ENDS WITH EARTH EMBANKMENT.



DESIGNED	N. KAMPAN
CHECKED	M. HOOK
DRAWN	M. HUNT
CHECKED	M. HOOK

EXAMINED	ENGINEER OF BRIDGE DESIGN
PASSED	ENGINEER OF BRIDGES AND STRUCTURES

CULVERT DETAILS
OLD IL 4 OVER HURRICANE CREEK
SBI ROUTE 4 SECTION F(B-3)
MACOUPIN COUNTY
STATION 2126+25.00
STRUCTURE 059-2503