

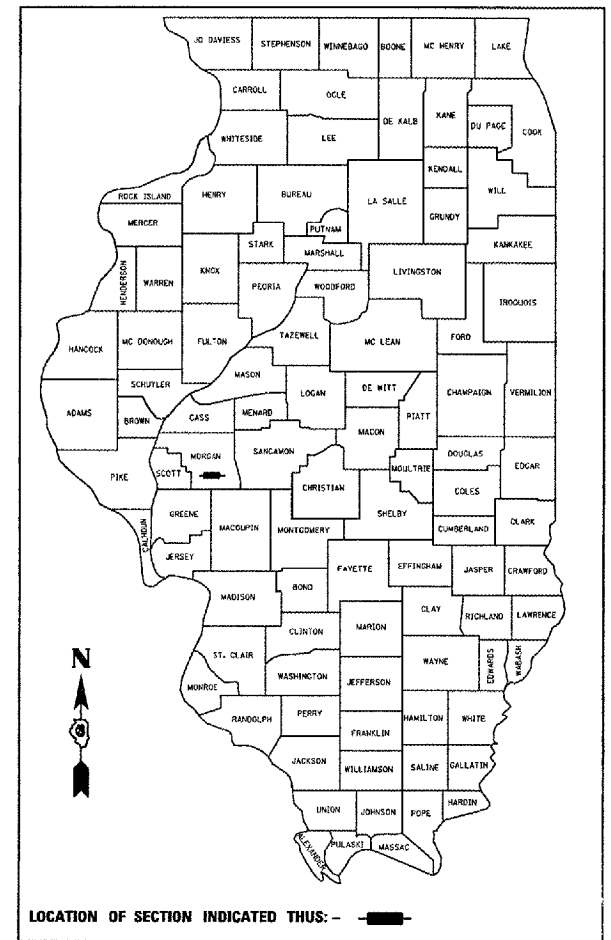
| F.A.P. RTE. | SECTION | COUNTY | TOTAL SHEETS | SHEET NO. |
|-------------|---------------|--------|--------------|-----------|
| 753 | (25)RS-8, 1-2 | MORGAN | 26 | 1 |

STATE OF ILLINOIS
DEPARTMENT OF TRANSPORTATION
DIVISION OF HIGHWAYS

**PROPOSED
HIGHWAY PLANS**

FAP SECTION 753 SPUR 3.86 (BL I-72)
SECTION (25)RS-8, 1-2
PROJECT: MA-0753 (031)
MORGAN COUNTY
C-96-548-07

D-96-507-05



FOR INDEX OF SHEETS, SEE SHEET NO. 2

FOR LIST OF HIGHWAY STANDARDS, SEE SHEET NO. 2

HIGHWAY CLASSIFICATION

FAP 753

CLASSIFICATION - MINOR ARTERIAL

ADT (2005) - 7300

ADT (2010) - 7700

ADT (2030) - 9300

PV - 90 %

SU - 5.0 %

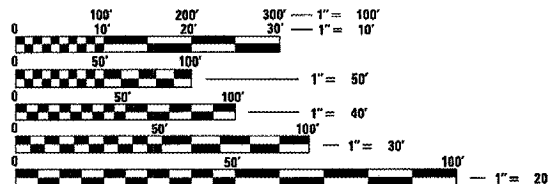
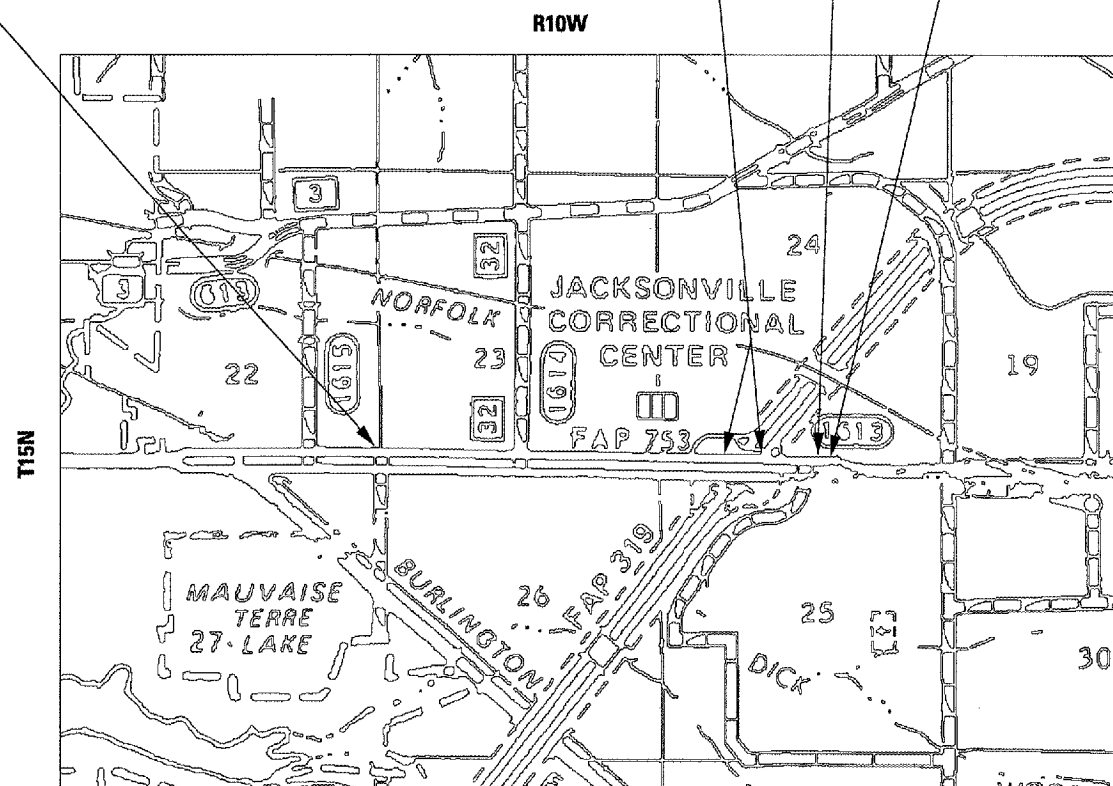
MU - 5.0 %

BEGIN PROJECT
EB STA 431+85.00
WB STA 438+88.00

BRIDGE OMISSION SN 069-0044
EB STA 498+19.84 TO STA 501+44.20
WB STA 498+55.47 TO STA 501+79.83

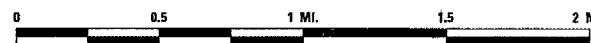
STATION EQUATION
517+77.09 BK = 1450+00 AH

END PROJECT
STA 1449+50.00 (EB & WB)



FULL SIZE PLANS HAVE BEEN PREPARED USING STANDARD ENGINEERING SCALES. REDUCED SIZED PLANS WILL NOT CONFORM TO STANDARD SCALES. IN MAKING MEASUREMENTS ON REDUCED PLANS, THE ABOVE SCALES MAY BE USED.

J.U.L.I.E.
JOINT UTILITY LOCATION INFORMATION FOR EXCAVATION
1-800-892-0123



GROSS LENGTH OF SECTION = 8,642.09' = 1.64 MI.

NET LENGTH OF SECTION = 8,317.73' = 1.58 MI.

PROJECT ENGINEER: JOHN NEGANGARD (217) 782-6990
SQUAD LEADER: VICTOR YOUNG (217) 557-7897

CONTRACT NO. 72948

STATE OF ILLINOIS
DEPARTMENT OF TRANSPORTATION
DIVISION OF HIGHWAYS

SUBMITTED Jan 31, 20 07
Christine Reed
DEPUTY DIRECTOR OF HIGHWAYS, REGION ENGINEER

March 23, 20 07
Eric E. Harm
INTERIM ENGINEER OF DESIGN AND ENVIRONMENT

March 23, 20 07
Milton R. See
DIRECTOR OF HIGHWAYS, CHIEF ENGINEER

**PRINTED BY THE AUTHORITY
OF THE STATE OF ILLINOIS**

| F.A.P. RTE. | SECTION | COUNTY | TOTAL SHEETS | SHEET NO. |
|---------------------|-------------|---------------------------|--------------|-----------|
| 753 | 25-BS-B-1-2 | MORGAN | 26 | 2 |
| STA. | | TO STA. | | |
| FED. ROAD DIST. NO. | | ILLINOIS FED. AID PROJECT | | |

INDEX OF SHEETS

- 1 COVER SHEET
- 2 GENERAL NOTES & COMMITMENTS
- 3 SUMMARY OF QUANTITIES
- 4-5 SCHEDULE OF QUANTITIES
- 6 CROSSTIES AND BENCHMARKS
- 7-8 TYPICAL SECTIONS
- 9-14 PLAN SHEETS
- 15-20 PAVEMENT MARKING PLANS
- 21-22 ENTRANCE AND SIDEROAD DETAILS
- 23 BUTT JOINT DETAIL
- 24 LONGITUDINAL JOINT DETAIL
- 25-26 INTERSECTION DETAIL

HIGHWAY STANDARDS

- 000001-04 701006-02
- 001006 701101-01
- 406201 701201-02
- 420001-06 701421-01
- 442201-02 701422-01
- 604036-01 702001-06
- 606301-02 780001-01
- 642001 781001-02
- 701001-01 701301-02

GENERAL NOTES:

1. ALL ELEVATIONS SHOWN IN THE PLANS ARE U.S.G.S. MEAN SEA LEVEL DATUM.
2. ANY REFERENCE TO THE STANDARDS THROUGHOUT THE PLANS SHALL BE INTERPRETED TO BE THE LATEST STANDARDS OF THE DEPARTMENT AS INCLUDED IN THE PLANS.
3. THE THICKNESS OF BITUMINOUS MIXTURES SHOWN ON THE PLANS IS THE NOMINAL THICKNESS. DEVIATIONS FROM THE NOMINAL THICKNESS WILL BE PERMITTED WHEN SUCH DEVIATIONS OCCUR DUE TO IRREGULARITIES IN THE EXISTING SURFACE OR BASE ON WHICH THE BITUMINOUS MIXTURE IS PLACED.
4. THE LOCATION OF THOSE BURIED AND ABOVE GROUND UTILITIES SHOWN ARE APPROXIMATE. THE CONTRACTOR SHALL BE RESPONSIBLE FOR PROTECTING UTILITY PROPERTY FROM CONSTRUCTION OPERATIONS AS OUTLINED IN ARTICLE 107.26 OF THE STANDARD SPECIFICATIONS. THE J.U.L.I.E. NUMBER IS (800) 892-0123. A MINIMUM OF 48 HOURS ADVANCE NOTICE IS REQUIRED. SEE SPECIAL PROVISIONS FOR STATUS OF UTILITIES, WITH UTILITY COMPANIES LISTED.
5. THE EXISTING ROAD SIGNS THAT INTERFERE WITH CONSTRUCTION SHALL BE RELOCATED AS DIRECTED BY THE ENGINEER. AFTER THE CONSTRUCTION IS COMPLETE, THE CONTRACTOR SHALL REPLACE THE SIGNS AS DIRECTED BY THE ENGINEER. THIS WORK WILL NOT BE PAID FOR SEPARATELY, BUT CONSIDERED INCLUDED IN THE CONTRACT UNIT BID PRICES.
6. ACCESS TO ALL PROPERTIES SHALL BE MAINTAINED DURING CONSTRUCTION ACTIVITIES. WHEN UNAVOIDABLE, REASONABLE PARKING SHALL BE PROVIDED FOR THOSE PROPERTIES WHICH ARE TEMPORARILY UNACCESSIBLE.
7. WHERE SECTION OR SUBSECTION MONUMENTS ARE ENCOUNTERED, THE ENGINEER SHALL BE NOTIFIED BEFORE SUCH MONUMENTS ARE REMOVED. THE CONTRACTOR SHALL PROTECT AND CAREFULLY PRESERVE ALL MONUMENTS UNTIL AN AUTHORIZED SURVEYOR OR AGENT HAS WITNESSED OR OTHERWISE REFERENCED THEIR LOCATION. THE CONTRACTOR SHALL BE RESPONSIBLE FOR HAVING AN AUTHORIZED SURVEYOR REESTABLISH ANY SECTION OR SUBSECTION MONUMENTS DESTROYED BY HIS OPERATIONS.
8. THE QUANTITY FOR SHOULDERS WAS ESTIMATED FOR 3" TO COMPENSATE FOR ANY DISCREPANCIES.
9. THE FOLLOWING APPLICATION RATES WERE USED FOR QUANTITY CALCULATIONS:
 LEVELING BINDER 0.056 TONS / SQ. YD. • IN
 BIT. CONC. SURF. CSE 0.056 TONS / SQ. YD. • IN
 AGG. SHOULDERS 2.05 TONS / CU. YD
 BIT. MATLS. (P.C.) 0.00038 TONS / SQ. YD (ON PAVEMENT)
 AGG. (P.C.) 0.002 TONS / SQ. YD
10. ALL REFERENCES IN THE PLANS TO "BITUMINOUS CONCRETE" SHALL BE INTERPRETED TO MEAN "HOT-MIX ASPHALT."

COMMITMENTS:

1. FIELD/RESIDENT ENGINEER SHALL CONTACT STUDIES & PLANS CONCERNING ANY MAJOR PLAN CHANGE TO MAKE SURE NO PREVIOUS COMMITMENTS (NOT LISTED) WERE MADE AFFECTING THE DESIGN & ALLOW AN IMPROVED DESIGN FOR FUTURE PROJECTS.

THE FOLLOWING MIXTURE REQUIREMENTS ARE APPLICABLE FOR THIS PROJECT:

| LOCATIONS: | SURFACE | BINDER | BITUMINOUS SHOULDER | INCIDENTAL BITUMINOUS SURFACING, SUPERPAVE |
|--|---|---|---------------------------|--|
| IDOT PAY CODE | X4066526 | X4066770 | 48203100 | XX004949 |
| MIXTURE USE(S): | POLYMER BITUMINOUS CONCRETE SURFACE COURSE, SUPERPAVE, MIX "D", N70 | LEVELING BINDER, MACHINE METHOD, SUPERPAVE, N70 | HOT MIX ASPHALT SHOULDERS | ENTRANCE & SIDEROAD |
| AC/PG | SBS PG 70-22 | PG 64-22 | PG 58-22 | PG 64-22 |
| DESIGN AIR VOIDS: | 4.0% @ NDesign = 70 | 4.0% @ NDesign = 70 | 2.0% @ N = 30 | 4.0% @ N = 50 |
| MIXTURE COMPOSITION: (GRADATION MIXTURE) | IL 9.5 OR 12.5 | IL 9.5 | BAM MIX | IL 9.5 or 12.5 |
| FRICTION AGGREGATE | MIX D | N/A | N/A | MIX C |

| | |
|---|--------------------|
| DISTRICT SIX | |
| EXAMINED <u>January 18</u> 20 <u>07</u> | <u>[Signature]</u> |
| OPERATIONS ENGINEER | |
| EXAMINED <u>Jan 18</u> 20 <u>07</u> | <u>[Signature]</u> |
| PROGRAM IMPLEMENTATION ENGINEER | |
| EXAMINED <u>Jan 18</u> 20 <u>07</u> | <u>[Signature]</u> |
| PROGRAM DEVELOPMENT ENGINEER | |

PLOT DATE = 2/1/2007
 FILE NAME = c:\projects\753\753\gennotes.dgn
 PLOT SCALE = 1/2"=1'-0"
 USER NAME = varenada

| REVISIONS | |
|-----------|------|
| NAME | DATE |
| | |
| | |
| | |
| | |
| | |
| | |
| | |
| | |
| | |
| | |

ILLINOIS DEPARTMENT OF TRANSPORTATION
 INDEX OF SHEETS, GENERAL NOTES
 HIGHWAY STANDARDS, & COMMITMENTS
 FAP RT 753 SPUR (OLD US 36) & FAS 1613
 SECTION 25RS-B, 1-2
 MORGAN COUNTY

SCALE: VERT. _____
 HORIZ. _____
 DATE: _____
 DRAWN BY: CFC, CCA
 CHECKED BY: CCA

| F.A.P. RTE. | SECTION | COUNTY | TOTAL SHEETS | SHEET NO. |
|-----------------------|--------------|----------|------------------|-----------|
| 753 | 25 RS-8, I-2 | MORGAN | 26 | 4 |
| STA. | | TO STA. | | |
| FED. ROAD DIST. NO. 6 | | ILLINOIS | FED. AID PROJECT | |

ENTRANCE IMPROVEMENT SCHEDULE FOR RURAL / URBAN "PPP" PROJECTS

| LOCATION | TYPE OF ENTRANCE | EX MATERIAL TYPE | WIDTH | RT OFFSET | LT OFFSET | LENGTH (FROM EDGE OF PVT/ BIT SHLD TO LIMITS OF IMPROVEMENT) | PR BIT. CONC. THICKNESS | BIT. SURF. REM. - BUTT JOINT | P.C.C. SURF. REM. - BUTT JOINT | PREP OF BASE | AGG. BASE REPAIR | AGGREGATE SURFACE COURSE TY - B | BIT (P.C.) | AGG (P.C.) | INCIDENTAL BIT. SURF. | |
|-----------------------|-------------------------------------|--------------------------------|--------|-----------|-----------|--|-------------------------|------------------------------|--------------------------------|--------------|------------------|---------------------------------|------------|------------|-----------------------|-------|
| (LT / RT) (STA) (+) | (FE / PE / CE / MB) (RURAL / URBAN) | (EARTH / AGG. / BIT. / P.C.C.) | FOOT | FOOT | FOOT | FOOT | INCH | SO. YD. | SO. YD. | SO. YD. | TON | TON | TON | TON | TON | |
| RT STA 433+20 | S/R (WOODS LANE) | BIT. (O & C) | 110.57 | | | 10 | 2.5 | 147.3 | | 147.3 | 2.1 | | 0.06 | 0.29 | 20.62 | |
| RT STA 435+86 | PE | BIT. | 39.92 | | | 7 | 2.5 | 36.42 | | 36.42 | 0.52 | | 0.01 | 0.07 | 5.1 | |
| RT STA 437+71 | PE | AGG. | 22.19 | | | 7 | 3.5 | | | 22.17 | 0.32 | 3.16 | | | | |
| RT STA 438+63 | PE | AGG. | 19.27 | | | 7 | 3.5 | | | 20.44 | 0.29 | 2.91 | | | | |
| LT STA 443+63 | CE (PACTIV) | P.C.C. | 87.75 | | | 10 | 2.5 | | 96.23 | 96.23 | 5.02 | | 0.04 | 0.19 | 13.47 | |
| RT STA 446+62 | PE | AGG. | 43.64 | | | 7 | 3.5 | | | 39.39 | 0.56 | 2.91 | | | | |
| LT STA 450+00 | FE | BIT. | 33.96 | | | 7 | 2.5 | 31.87 | | 31.87 | 0.45 | | 0.01 | 0.06 | 4.46 | |
| LT STA 459+55 | S/R (MOBIL RD.) | P.C.C. | 110.51 | | | 10 | 2.5 | | 29.92 | 29.92 | 1.3 | | 0.01 | 0.06 | 4.19 | |
| RT STA 459+72 | PE/MB | AGG. | 30.89 | 7 | | 7 | 3.5 | | | 64.03 | 0.91 | 9.12 | | | | |
| LT STA 464+65 | FE | BIT. | 13.72 | | | 7 | 2.5 | 7.23 | | 7.23 | 0.1 | | | 0.01 | 1.01 | |
| LT STA 473+17 | CE | BIT. | 35.9 | | | 10 | 2.5 | 44.07 | | 44.07 | 0.63 | | 0.02 | 0.09 | 6.17 | |
| LT STA 473+17 | CE | BIT. | 42.04 | | | 70 | 2.5 | 51.97 | | 51.97 | 4.55 | | 0.02 | 0.10 | 7.28 | |
| RT STA 473+28 | S/R (EASTGATE DR.) | P.C.C. | 127.21 | | | 10 | 2.5 | | 164.86 | 164.86 | 4.84 | | 0.06 | 0.33 | 23.08 | |
| RT STA 513+20 | PE | AGG. | 53.76 | | | 7 | 3.5 | | | 47.26 | 0.67 | 6.73 | | | | |
| RT STA 514+09 | PE | BIT. (O & C) | 40.74 | | | 7 | 2.5 | 37.01 | | 37.01 | 0.53 | | 0.01 | 0.07 | 5.18 | |
| LT STA 514+24 | FE | BIT. | 16.31 | | | 7 | 2.5 | 18.13 | | 18.13 | 0.26 | | 0.01 | 0.04 | 2.54 | |
| TOTAL = | | | | | | | | 373.99 | | 291.02 | 858.28 | 23.05 | 24.82 | 0.25 | 1.33 | 93.10 |

SHOULDER REPAIR SCHEDULE *

| LOCATION | LENGTH (FOOT) | BITUMINOUS CONCRETE SHOULDER REMOVAL, 5" (FOOT) | HOT-MIX ASPHALT SHOULDERS, 5" (SQ YD) |
|----------------------|---------------|---|---------------------------------------|
| STATION TO STATION | (FOOT) | (FOOT) | (SQ YD) |
| EB | | | |
| 431+85 TO 468+00 | 3615 | 3615 | 401.7 |
| 475+00 TO 491+60 | 1660 | 1660 | 184.4 |
| 493+00 TO 497+18 | 418 | 418 | 46.4 |
| 502+65 TO 507+10 | 448 | 448 | 49.8 |
| EB PASSING LANE SIDE | | | |
| 444+67 TO 445+92 | 125 | 125 | 13.9 |
| 447+75 TO 458+65 | 1090 | 1090 | 121.1 |
| 460+35 TO 468+15 | 780 | 780 | 86.7 |
| WB | | | |
| 438+88 TO 442+82 | 394 | 394 | 43.8 |
| 448+70 TO 458+36 | 966 | 966 | 107.3 |
| 460+35 TO 472+37 | 1202 | 1202 | 133.6 |
| 478+27 TO 492+20 | 1393 | 1393 | 154.8 |
| 491+50 TO 492+38 | 88 | 88 | 9.8 |
| 502+80 TO 506+85 | 405 | 405 | 45.0 |
| WB PASSING LANE SIDE | | | |
| 438+88 TO 442+65 | 377 | 377 | 41.9 |
| 444+67 TO 445+92 | 125 | 125 | 13.9 |
| 457+72 TO 458+60 | 88 | 88 | 9.8 |
| 460+35 TO 472+50 | 1215 | 1215 | 135.0 |
| TOTAL | 14389 | 14389 | 1598.8 |

* SHOWN FOR INFORMATION ONLY. QUANTITIES INCLUDED IN HOT-MIX ASPHALT SHOULDERS & BITUMINOUS CONCRETE SHOULDER REMOVAL

PAVING SCHEDULE

| LOCATION STATION | BITUMINOUS MATERIALS PRIME COAT (TON) | AGGREGATE PRIME COAT (TON) | POLYMERIZED HOT-MIX ASPHALT SURFACE COURSE, MIX "D", N70 (TON) | LEVELING BINDER (MACHINE METHOD), N70 (TON) | HOT-MIX ASPHALT SHOULDERS (TON) | AGGREGATE SHOULDERS, TYPE B (TON) |
|---------------------|---------------------------------------|----------------------------|--|---|---------------------------------|-----------------------------------|
| MAINLINE | | | | | | |
| EB 431+85 TO 518+00 | 26.5 | 140 | 2159 | 1439 | 1337 | 412 |
| WB 438+88 TO 518+00 | 26.1 | 137 | 2171 | 1448 | 1070 | 348 |
| TOTAL | 52.6 | 277 | 4330 | 2887 | 2407 | 760 |

| REVISIONS | |
|-----------|------|
| NAME | DATE |
| | |
| | |
| | |
| | |
| | |
| | |
| | |
| | |
| | |

ILLINOIS DEPARTMENT OF TRANSPORTATION
 SCHEDULE OF QUANTITIES
 FAP RTE 753 SPUR (OLD US 36) & FAS 1613
 SECTION 25RS-8, I-2
 MORGAN COUNTY

SCALE: VERT. NONE
 HORIZ. NONE
 DATE: OCTOBER 2006
 DRAWN BY: LLO
 CHECKED BY:

| F.A.P. RTE. | SECTION | COUNTY | TOTAL SHEETS | SHEET NO. |
|-----------------------|--------------|----------|------------------|-----------|
| 753 | 25 RS-8, I-2 | MORGAN | 26 | 5 |
| STA. | | TO STA. | | |
| FED. ROAD DIST. NO. 6 | | ILLINOIS | FED. AID PROJECT | |

| LONGITUDINAL JOINT REPAIR | | | FOR INFORMATION ONLY* | | | |
|---------------------------|--------------------------------|------|--|---|---|---|
| DIRECTION | LOCATION STATION TO STATION | FOOT | AREA REFLECTIVE CRACK CONTROL 4' WIDE (SQ YD) | PCC PAVEMENT REMOVAL, 2" 2' WIDE (SQ YD) | BIT. MATERIAL (PRIME COAT) 2' WIDE (TON) | HOT-MIX ASPHALT BINDER COURSE, IL 19.0, N70 2' WIDE (TON) |
| WB | 440+35 440+85 | 50 | 22.2 | 11.1 | 0.0042 | 1.2 |
| WB | 476+00 477+50 | 150 | 66.7 | 33.3 | 0.0127 | 3.7 |
| WB | 482+50 483+00 | 50 | 22.0 | 11.1 | 0.0042 | 1.2 |
| WB | 484+45 484+50 | 5 | 2.2 | 1.1 | 0.0004 | 0.1 |
| WB | 484+80 485+00 | 20 | 8.9 | 4.4 | 0.0017 | 0.5 |
| WB | 492+00 492+50 | 50 | 22.2 | 11.1 | 0.0042 | 1.2 |
| WB | 497+23 497+55 | 32 | 14.2 | 7.1 | 0.0027 | 0.8 |
| WB | 508+00 509+00 | 100 | 44.4 | 22.2 | 0.0084 | 2.5 |
| WB | 509+30 509+80 | 50 | 22.2 | 11.1 | 0.0042 | 1.2 |
| WB | 510+75 511+75 | 100 | 44.4 | 22.2 | 0.0084 | 2.5 |
| WB | 512+37 512+67 | 30 | 13.3 | 6.7 | 0.0025 | 0.7 |
| WB | 512+18 512+72 | 54 | 24.0 | 12.0 | 0.0046 | 1.3 |
| EB | 435+85 436+00 | 15 | 6.7 | 3.3 | 0.0013 | 0.4 |
| EB | 446+83 447+15 | 32 | 14.2 | 7.1 | 0.0027 | 0.8 |
| EB | 475+00 479+16 | 416 | 184.9 | 92.4 | 0.0351 | 10.4 |
| EB | 449+37 450+40 | 103 | 45.8 | 22.9 | 0.0087 | 2.6 |
| EB | 452+15 452+92 | 77 | 34.2 | 17.1 | 0.0065 | 1.9 |
| EB | 452+50 456+56 | 406 | 180.4 | 90.2 | 0.0343 | 10.1 |
| EB | 485+88 486+20 | 32 | 14.2 | 7.1 | 0.0027 | 0.8 |
| EB | 486+56 487+49 | 93 | 41.3 | 20.7 | 0.0079 | 2.3 |
| EB | 487+76 488+17 | 41 | 18.2 | 9.1 | 0.0035 | 1.0 |
| EB | 494+34 496+32 | 198 | 88.0 | 44.0 | 0.0167 | 4.9 |
| EB | 510+30 510+50 | 20 | 8.9 | 4.4 | 0.0017 | 0.5 |
| TOTAL | | 2124 | 944.0 | 472.0 | 0.1794 | 52.9 |

* ALL ITEMS LISTED SHALL BE INCLUDED IN THE COST OF LONGITUDINAL JOINT REPAIR.

| PATCHING SCHEDULE | | | | | | | | | |
|-------------------|---------|------------------|-----------------|-----------------------|-----------------------------------|-------------------------------|---|--|---|
| DIRECTION | LANE | LENGTH (FOOT) | WIDTH (FOOT) | SAW CUTS (FOOT) | DOWEL BARS 1-1/2" (EACH) | PAVEMENT FABRIC (SQ YD) | CLASS B PATCHES TYPE I 9 INCH (SQ YD) | CLASS B PATCHES TYPE II 9 INCH (SQ YD) | CLASS B PATCHES TYPE III 9 INCH (SQ YD) |
| WB | DRIVING | 8 | 4.8 | 30 | 8 | | 4 | | |
| | DRIVING | 8 | 12.0 | 52 | 22 | | | 11 | |
| | PASSING | 8 | 12.0 | 52 | 22 | | | 11 | |
| | PASSING | 6 | 12.0 | 48 | 22 | | | 8 | |
| | PASSING | 8 | 12.0 | 52 | 22 | | | 11 | |
| | PASSING | 6 | 12.0 | 48 | 22 | | | 8 | |
| | DRIVING | 6 | 12.0 | 48 | 22 | | | 8 | |
| | DRIVING | 6 | 12.0 | 48 | 22 | | | 8 | |
| | PASSING | 6 | 12.0 | 48 | 22 | | | 8 | |
| | DRIVING | 8 | 12.0 | 52 | 22 | | | 11 | |
| | DRIVING | 15 | 12.0 | 66 | 22 | 20 | | | 20 |
| | PASSING | 15 | 12.0 | 66 | 22 | 20 | | | 20 |
| | DRIVING | 15 | 12.0 | 66 | 22 | 20 | | | 20 |
| EB | DRIVING | 6 | 12.0 | 48 | 22 | | | 8 | |
| | DRIVING | 6 | 12.0 | 48 | 22 | | | 8 | |
| | DRIVING | 6 | 12.0 | 48 | 22 | | | 8 | |
| | PASSING | 6 | 12.0 | 48 | 22 | | | 8 | |
| | DRIVING | 6 | 12.0 | 48 | 22 | | | 8 | |
| | PASSING | 6 | 12.0 | 48 | 22 | | | 8 | |
| | DRIVING | 6 | 12.0 | 48 | 22 | | | 8 | |
| | PASSING | 6 | 12.0 | 48 | 22 | | | 8 | |
| | DRIVING | 6 | 12.0 | 48 | 22 | | | 8 | |
| | DRIVING | 6 | 12.0 | 48 | 22 | | | 8 | |
| | DRIVING | 6 | 12.0 | 48 | 22 | | | 8 | |
| | PASSING | 6 | 12.0 | 48 | 22 | | | 8 | |
| | PASSING | 6 | 12.0 | 48 | 22 | | | 8 | |
| | PASSING | 6 | 12.0 | 48 | 22 | | | 8 | |
| TOTAL | | | | 1444 | 602 | 60 | 4 | 212 | 60 |

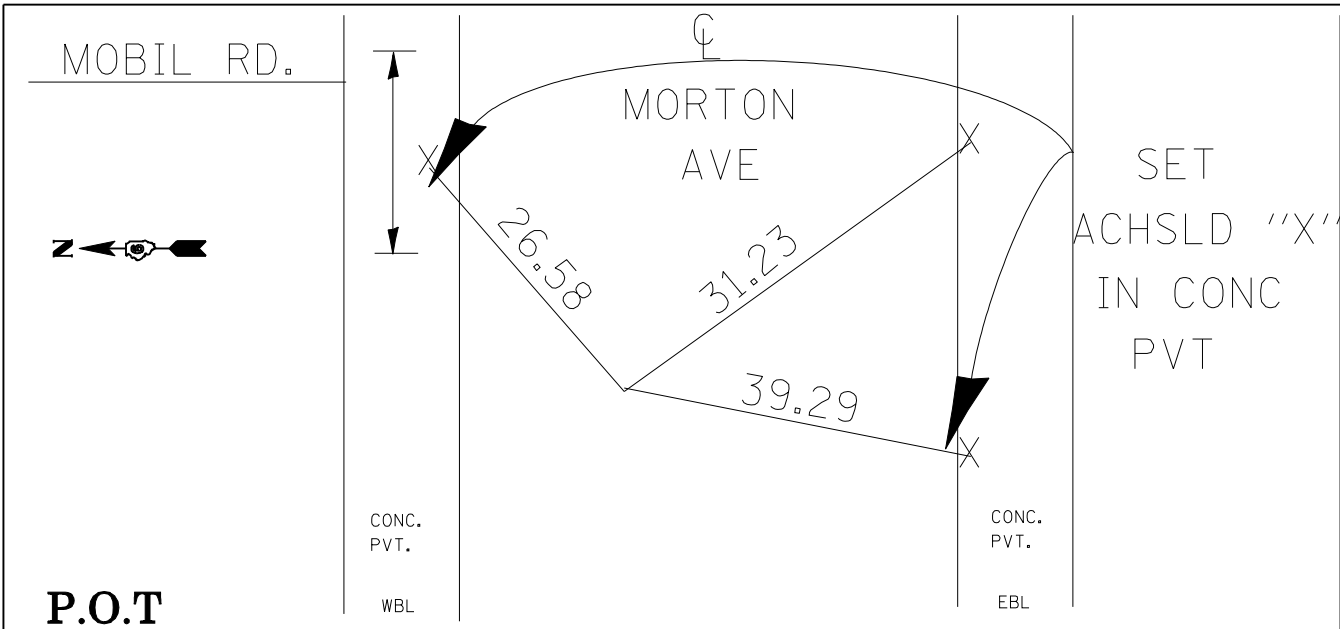
| CURB & GUTTER AND DRAINAGE SCHEDULE | | | | | | | | | |
|-------------------------------------|--------------------------------|------------------|---|--|---|-----------------------------|---|--|---|
| DIRECTION | LOCATION STATION TO STATION | LENGTH (FOOT) | COMBINATION CURB & GUTTER REMOVAL (FOOT) | COMB. CONC. CURB & GUTTER TYPE B9.24 (FOOT) | FRAMES & GRATES TO BE REMOVED (EACH) | GRATES, TYPE 8 (EACH) | CONCRETE MEDIAN SURF. REM. (SQ FT) | CONCRETE MEDIAN SURFACE (SQ FT) | PCC SURF. REMOVAL (COLD-MILLING) (SQ YD) |
| EB | 473+79 473+85 | 6 | 6 | 6 | | | | | |
| WB | 477+84 478+14 | 30 | 30 | 30 | | | | | |
| WB | 487+68 487+73 | 5 | 5 | 5 | | | | | |
| WB | 489+67 489+73 | 6 | 6 | 6 | | | | | |
| WB | 490+96 491+02 | 6 | 6 | 6 | | | | | |
| WB | 491+95 492+05 | 10 | 10 | 10 | | | | | |
| WB | 497+50 497+54 | 4 | 4 | 4 | | | | | |
| WB | 501+70 502+65 | 95 | 95 | 95 | | | | | |
| WB | 502+92 503+04 | 12 | 12 | 12 | | | | | |
| WB | 504+04 504+13 | 9 | 9 | 9 | | | | | |
| WB | 504+44 506+04 | 160 | 160 | 160 | | | | | |
| EB | 506+04 506+06 | 2 | 2 | 2 | | | | | |
| WB | 508+98 509+02 | 4 | 4 | 4 | | | | | |
| WB | 511+01 511+25 | 24 | 24 | 24 | | | | | |
| EB/WB | 511+79 512+30 | 102 | 102 | 102 | | | 140 | 140 | |
| MEDIAN | 511+00 | | | | 1 | 1 | | | |
| MEDIUAN | 511+50 513+69 | | | | | | 160 | 240* | 121 |
| RAMP C | ISLAND | | 58 | 58 | | | | | |
| TOTAL | | | 533 | 533 | 1 | 1 | 300 | 380* | 121 |

* ADDITIONAL QUANTITY ADDED; 2" EXTRA THICKNESS FOR ELEVATION DISCREPANCY

| REVISIONS | | ILLINOIS DEPARTMENT OF TRANSPORTATION |
|-----------|------|--|
| NAME | DATE | |
| | | <p>SCHEDULE OF QUANTITIES FAP RTE 753 SPUR (OLD US 36) & FAS 1613 SECTION 25RS-8, I-2 MORGAN COUNTY</p> <p>SCALE: VERT. NONE HORIZ. NONE DATE: OCTOBER 2006</p> <p>DRAWN BY: LLO CHECKED BY:</p> |
| | | |
| | | |
| | | |
| | | |
| | | |
| | | |
| | | |
| | | |
| | | |

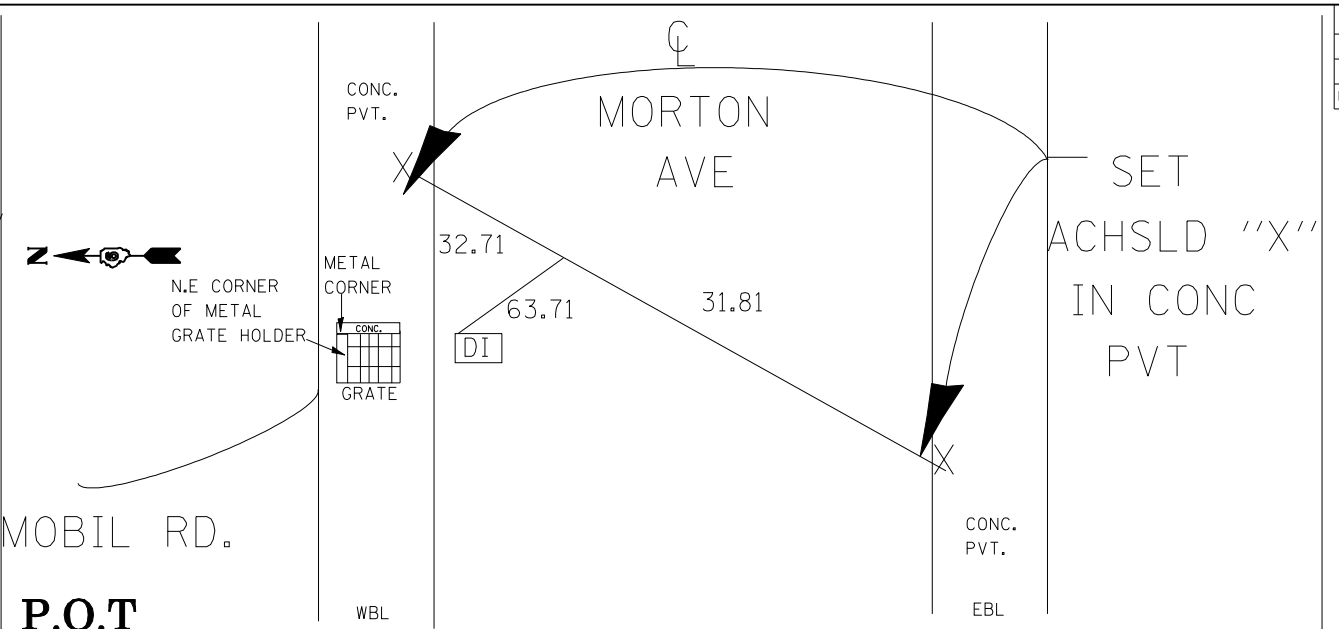
PLOT DATE = #DATES
 FILE NAME = #FILE#
 PLOT SCALE = #SCALE#
 USER NAME = #USER#

| F.A. RTE. | SECTION | COUNTY | TOTAL SHEETS | SHEET NO. |
|---------------------|--------------|----------|------------------|-----------|
| 753 | 25 RS-8, I-2 | MORGAN | 26 | 6 |
| STA. | | TO STA. | | |
| FED. ROAD DIST. NO. | | ILLINOIS | FED. AID PROJECT | |



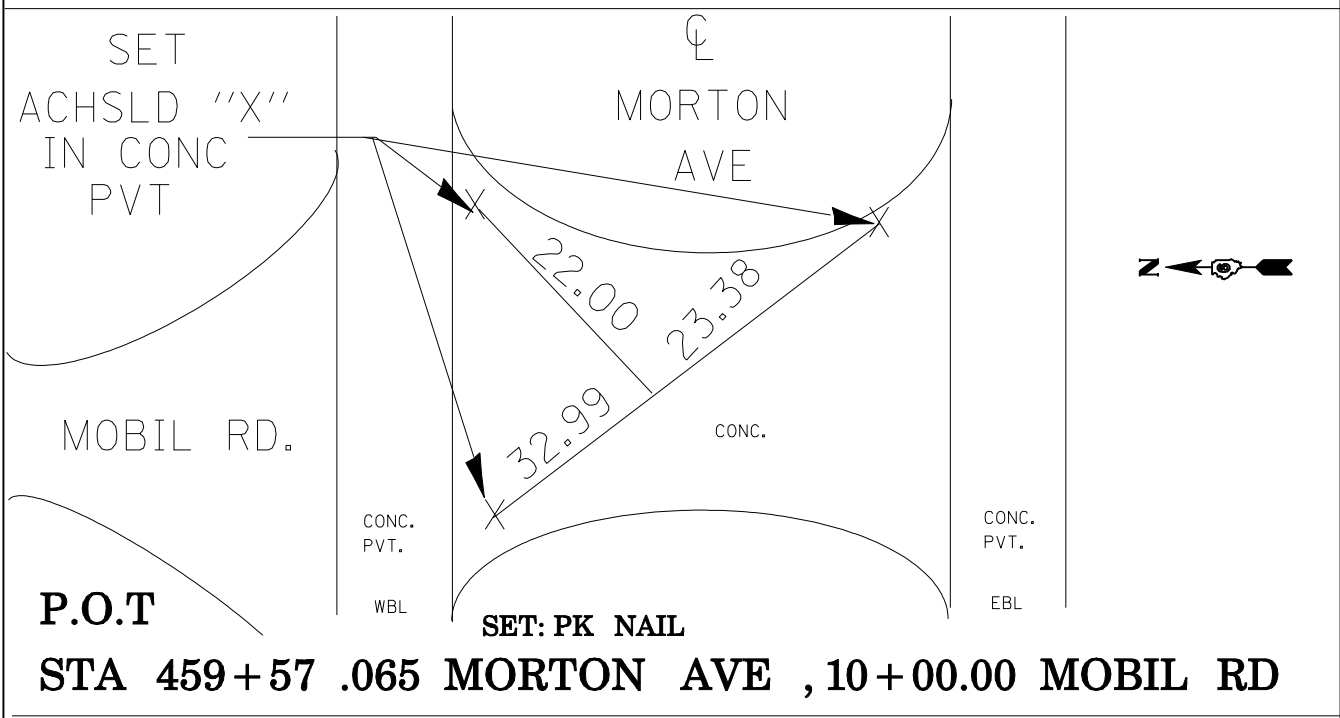
P.O.T
STA 453+00

SET: #4 REBAR W IDOT CAP



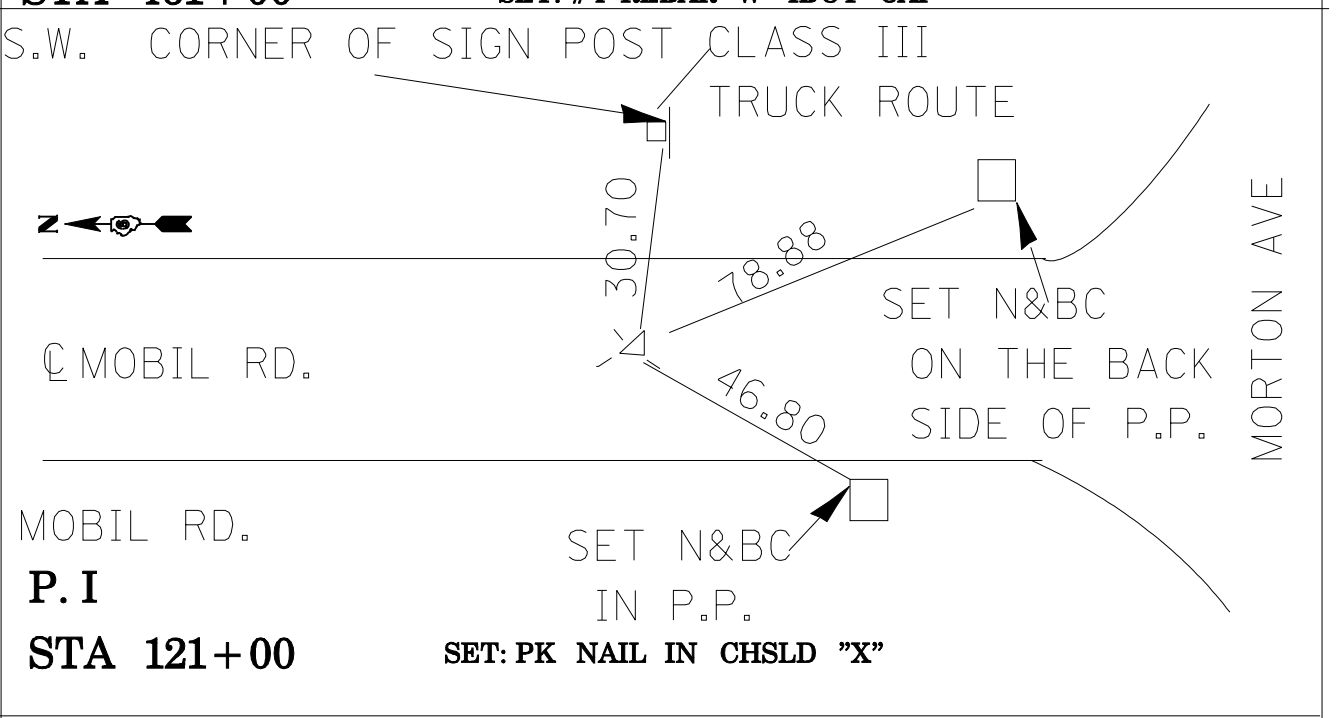
P.O.T
STA 461+00

SET: #4 REBAR W IDOT CAP



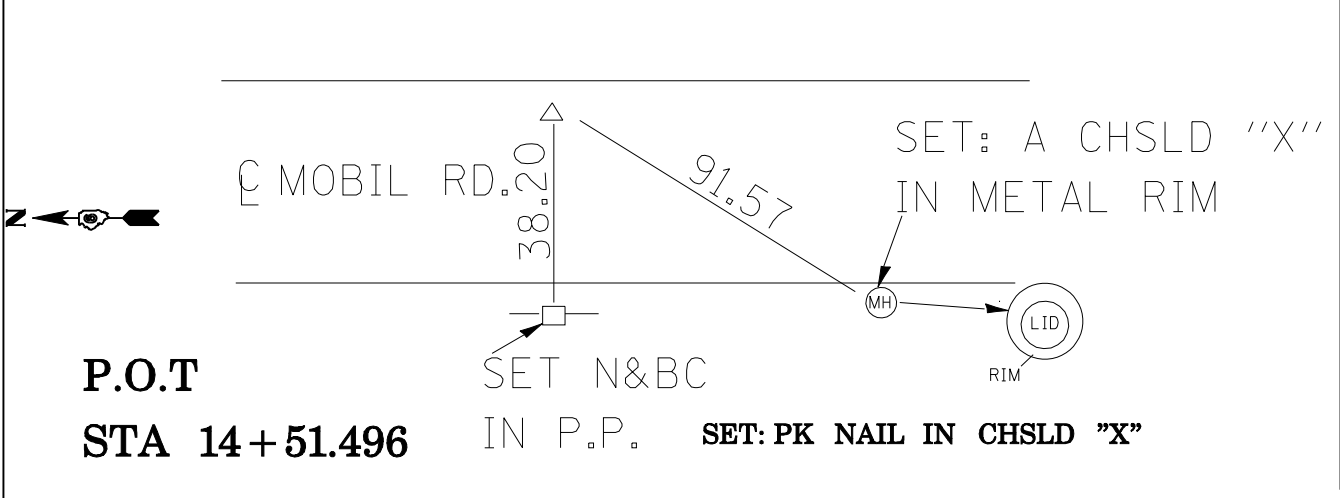
P.O.T
STA 459+57 .065 MORTON AVE , 10+00.00 MOBIL RD

SET: PK NAIL



P.I
STA 121+00

SET: PK NAIL IN CHSLD "X"



P.O.T
STA 14+51.496

SET: PK NAIL IN CHSLD "X"

TBM K-1: CHISELED "X" ON NNW FLANGE BOLT OF FIRE HYDRANT
+/- 60 FT NORTH OF OLD US 36 (E. MORTON AVE.) ;
+/- 57 FT E. OF T-ROAD NORTH 9MOBIL; RD) @ STATION 460+02.14 ; 98.6 LT

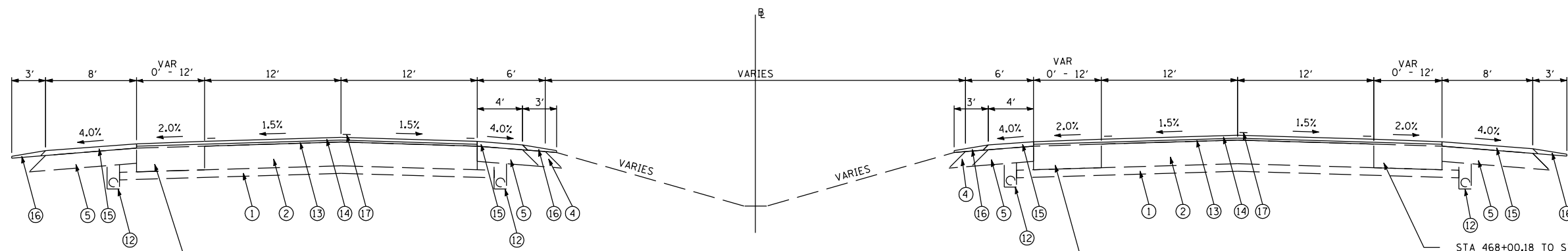
| REVISIONS | |
|-----------|------|
| NAME | DATE |
| | |
| | |
| | |
| | |
| | |
| | |
| | |
| | |
| | |
| | |

ILLINOIS DEPARTMENT OF TRANSPORTATION
CROSS TIES AND BENCHMARKS
FAP RTE 753 SPUR 90LD US 36) & FAS 1613
SECTION 25RS-8, I-2
MORGAN COUNTY

SCALE: VERT. DRAWN BY
 HORIZ. CHECKED BY
DATE

PLOT DATE = \$DATES
FILE NAME = \$FILEL\$
PLOT SCALE = \$SCALE\$
USER NAME = \$USER\$

| F.A.P. RTE. | SECTION | COUNTY | TOTAL SHEETS | SHEET NO. |
|---------------------|--------------|------------------|--------------|-----------|
| 753 | 25 RS-B, I-2 | MORGAN | 26 | 7 |
| STA. | | TO STA. | | |
| FED. ROAD DIST. NO. | ILLINOIS | FED. AID PROJECT | | |

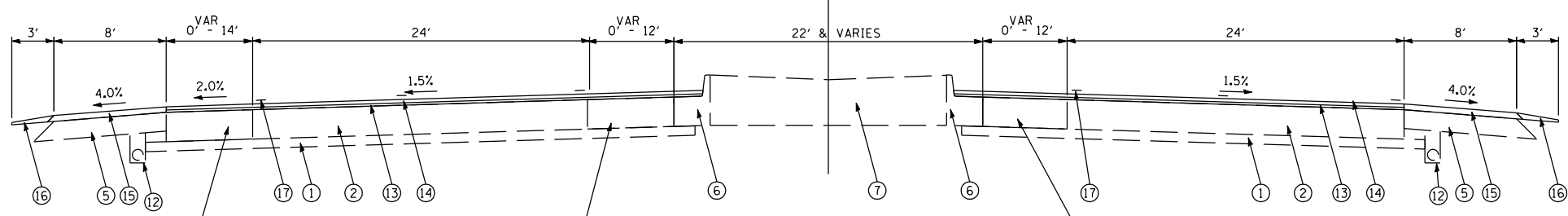


STA 443+33.38 TO STA 446+79.73
12' EX PCC WIDENING
NO EX OR PR BIT SHLD
STA 446+79.73 TO STA 448+70.18
VAR. 12' TO 1' EX PCC WIDENING
NO EX OR PR BIT SHLD

OLD US 36
EB STA 431+85.00 TO STA 473+49.05
WB STA 438+88.00 TO STA 473+49.05

STA 438+37.50 TO STA 440+27.53
VAR. 1' - 12' EX PCC WIDENING
NO EX OR PR BIT SHLD
STA 440+27.53 TO 443+02.21
12' EX PCC WIDENING
NO EX OR PR BIT SHLD
STA 468+21.05 TO STA 470+00.09
VAR. 1' TO 12' EX PCC WIDENING
STA 470+00.09 TO STA 472+64.57
12' EX PCC WIDENING

STA 468+00.18 TO STA 470+01.19
VAR. 1' - 12' EX PCC WIDENING
STA 470+01.19 TO STA 471+67.77
12' EX WIDENING
STA 471+67.77 TO STA 474+88.76
VAR. 12' - 1' EX PCC WIDENING



STA 473+60.72 TO STA 475+98.95
12' EX PCC WIDENING
STA 475+98.95 TO STA 477+39.38
VAR. 12' TO 2.76' EX PCC WIDENING
STA 477+39.38 TO STA 478+11.79
VAR. 2.76' TO 1' EX PCC WIDENING
STA 481+50.74 TO STA 489+48.55
VAR. 1' TO 20.67' WIDENING
STA 489+48.55 TO STA 491+36.27
VAR. WIDTH SHLD BETWEEN PVT
AND 14' RAMP LANE (SEE PLAN
SHEETS FOR ADDITIONAL DETAIL)

STA 473+49.05 TO STA 475+99.08
12' EX PCC WIDENING
STA 475+99.08 TO STA 477+82.67
VAR. 12' TO 1' EX PCC WIDENING
STA 493+58.36 TO STA 496+68.58
12' EX PCC WIDENING
STA 496+68.58 TO STA 497+54.13
VAR. 12' TO 2.63' EX PCC WIDENING

OLD US 36
EB STA 473+49.05 TO STA 498+19.84
WB STA 473+49.05 TO STA 498+55.47
EB OMISSION STA 498+19.84 TO STA 501+44.20
WB OMISSION STA 498+55.47 TO STA 501+79.83
EB STA 501+44.20 TO STA 507+29.03
WB STA 501+79.83 TO STA 507+29.03

STA 502+44.54 TO STA 503+98.85
VAR. 2.71' TO 12' EX PCC WIDENING
STA 503+98.85 TO STA 506+37.02
12' EX PCC WIDENING

- ① EXISTING GRANULAR SUBBASE, 4"
- ② EXISTING PCC BASE COURSE OR PAVEMENT, 8"
- ③ EXISTING BITUMINOUS SURFACE, 4 1/2" & VARIES
- ④ EXISTING AGGREGATE SHOULDER
- ⑤ EXISTING BITUMINOUS SHOULDER, 8"
- ⑥ EXISTING COMBINATION CONCRETE CURB & GUTTER TY B-9.24
- ⑦ EXISTING PCC MEDIAN, TY C4 SPECIAL
- ⑧ EXISTING CONCRETE MEDIAN SURFACE, 4" ON SAND FILL
- ⑨ EXISTING BITUMINOUS CONCRETE BASE COURSE WIDENING, 6"
- ⑩ EXISTING 22' PCC PAVEMENT, 6"
- ⑪ EXISTING CONC GUTTER, TY B, W/ BIT OVERLAY
- ⑫ EXISTING PIPE UNDERDRAIN
- ⑬ PR LVL BINDER, (MACHINE METHOD), 1" (SEE MIX TABLE FOR DETAILS)
- ⑭ PR HOT-MIX ASPHALT SURF CSE, 1 1/2" (SEE MIX TABLE FOR DETAILS)
- ⑮ PR HOT-MIX ASPHALT SHOULDER, 2 1/2" (SEE MIX TABLE FOR DETAILS)
- ⑯ PR AGG WEDGE SHOULDERS, TY B
- ⑰ PR PVT MARKINGS (SEE PLAN FOR DETAILS)

| REVISIONS | |
|-----------|------|
| NAME | DATE |
| | |
| | |
| | |
| | |
| | |
| | |
| | |
| | |
| | |
| | |

ILLINOIS DEPARTMENT OF TRANSPORTATION

TYPICAL SECTIONS
FAP 753 SPUR (OLD US 36)
AND FAS 1613

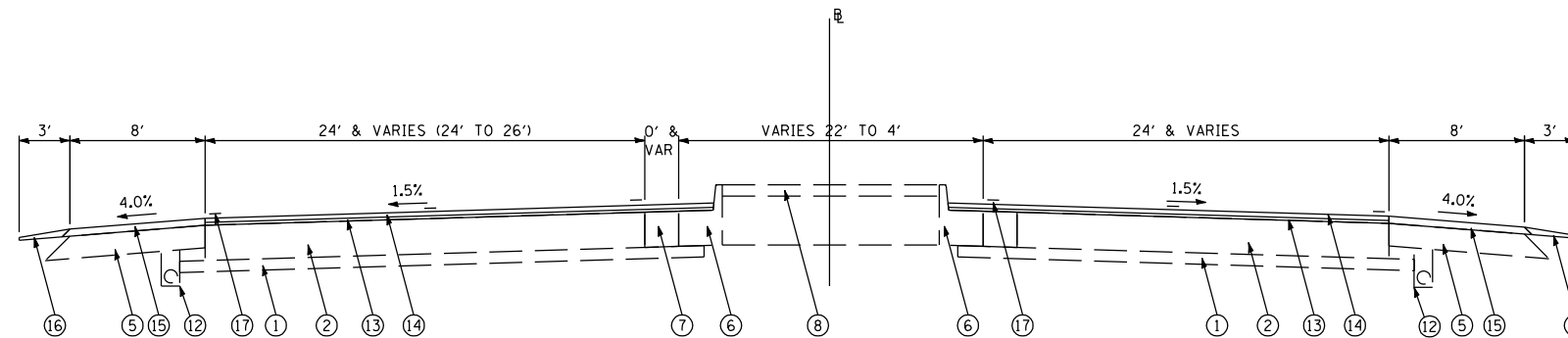
SCALE: VERT. _____
HORIZ. _____

DATE: _____

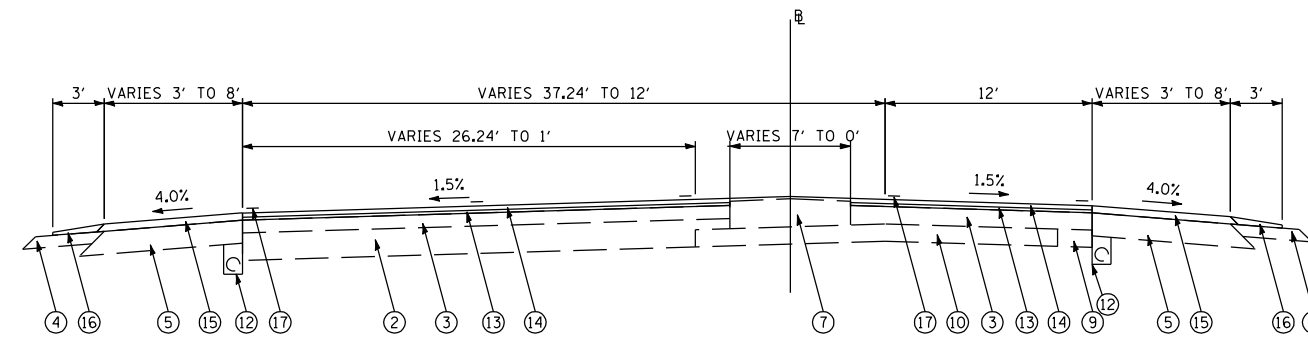
DRAWN BY: CFC, CCA
CHECKED BY: CCA

PLOT DATE = \$DATE\$
FILE NAME = \$FILEL\$
PLOT SCALE = \$SCALE\$
USER NAME = \$USER\$

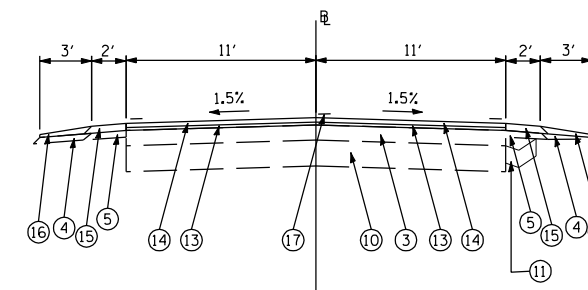
| F.A.P. RTE. | SECTION | COUNTY | TOTAL SHEETS | SHEET NO. |
|---------------------|--------------|------------------|--------------|-----------|
| 753 | 25 RS-B, I-2 | MORGAN | 26 | 8 |
| STA. | | TO STA. | | |
| FED. ROAD DIST. NO. | ILLINOIS | FED. AID PROJECT | | |



OLD US 36
STA 507+29.03 TO STA 512+30.00



OLD US 36
STA 512+30.00 TO STA 517+77.09
STATION EQUATION: STA 517+77.09 BK = STA 1450+00.00 AH



OLD US 36
STA 1450+00.00 TO STA 1449+50.00

- ① EXISTING GRANULAR SUBBASE, 4"
- ② EXISTING PCC BASE COURSE OR PAVEMENT, 8"
- ③ EXISTING BITUMINOUS SURFACE, 4 1/2" & VARIES
- ④ EXISTING AGGREGATE SHOULDER
- ⑤ EXISTING BITUMINOUS SHOULDER, 8"
- ⑥ EXISTING COMBINATION CONCRETE CURB & GUTTER TY B-9.24
- ⑦ EXISTING PCC MEDIAN, TY C4 SPECIAL
- ⑧ EXISTING CONCRETE MEDIAN SURFACE, 4" ON SAND FILL
- ⑨ EXISTING BITUMINOUS CONCRETE BASE COURSE WIDENING, 6"
- ⑩ EXISTING 22' PCC PAVEMENT, 6"
- ⑪ EXISTING CONC GUTTER, TY B, W/ BIT OVERLAY
- ⑫ EXISTING PIPE UNDERDRAIN
- ⑬ PR LVL BINDER, (MACHINE METHOD), 1" (SEE MIX TABLE FOR DETAILS)
- ⑭ PR HOT-MIX ASPHALT SURF CSE, SUPERPAVE, 1 1/2" (SEE MIX TABLE FOR DETAILS)
- ⑮ PR HOT-MIX ASPHALT SHOULDER, 2 1/2" (SEE MIX TABLE FOR DETAILS)
- ⑯ PR AGG WEDGE SHOULDERS, TY B
- ⑰ PR PVMT MARKINGS (SEE PLAN FOR DETAILS)

PLOT DATE = \$DATE\$
FILE NAME = \$FILEL\$
PLOT SCALE = \$SCALE\$
USER NAME = \$USER\$

| REVISIONS | |
|-----------|------|
| NAME | DATE |
| | |
| | |
| | |
| | |
| | |
| | |
| | |
| | |
| | |
| | |

ILLINOIS DEPARTMENT OF TRANSPORTATION

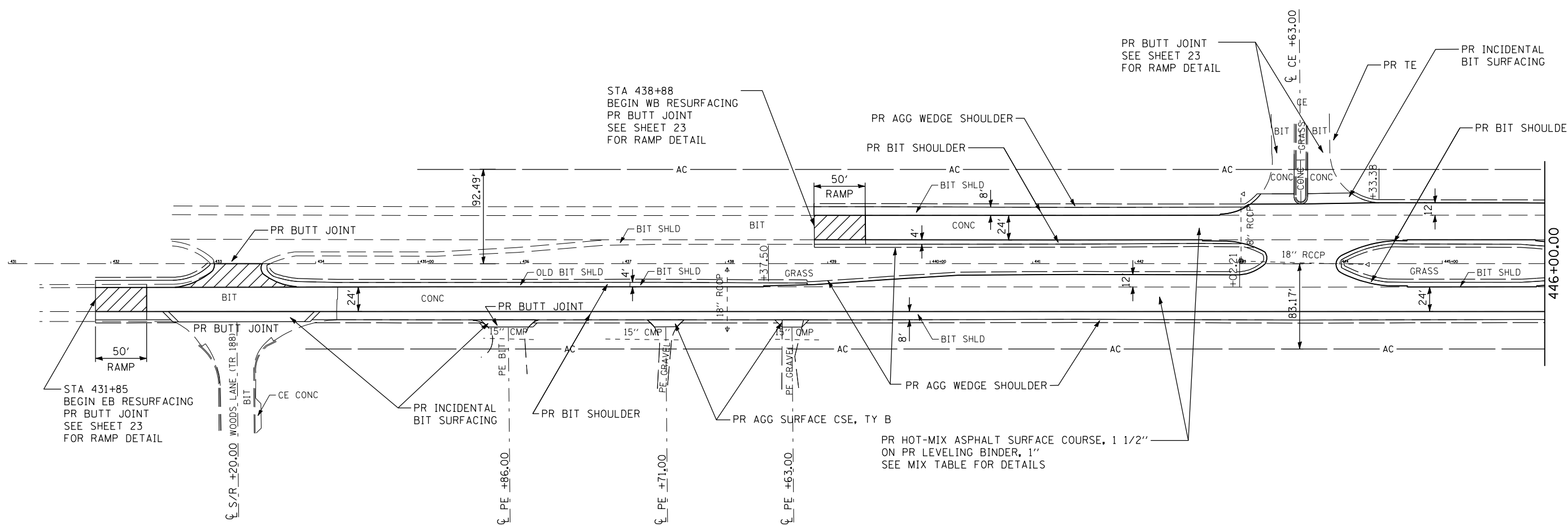
TYPICAL SECTIONS
FAP 753 SPUR (OLD US 36)
AND FAS 1613

SCALE: VERT.
HORIZ.

DATE: _____

DRAWN BY: CFC, CCA
CHECKED BY: CCA

| F.A.P. RTE. | SECTION | COUNTY | TOTAL SHEETS | SHEET NO. |
|---------------------|--------------|----------|------------------|-----------|
| 753 | 25 RS-B, I-2 | MORGAN | 26 | 9 |
| STA. | | TO STA. | | |
| FED. ROAD DIST. NO. | | ILLINOIS | FED. AID PROJECT | |



PLOT DATE = #DATES
 FILE NAME = #FILE#
 PLOT SCALE = #SCALE#
 USER NAME = #USER#

| REVISIONS | |
|-----------|------|
| NAME | DATE |
| | |
| | |
| | |
| | |
| | |
| | |
| | |
| | |
| | |
| | |

ILLINOIS DEPARTMENT OF TRANSPORTATION

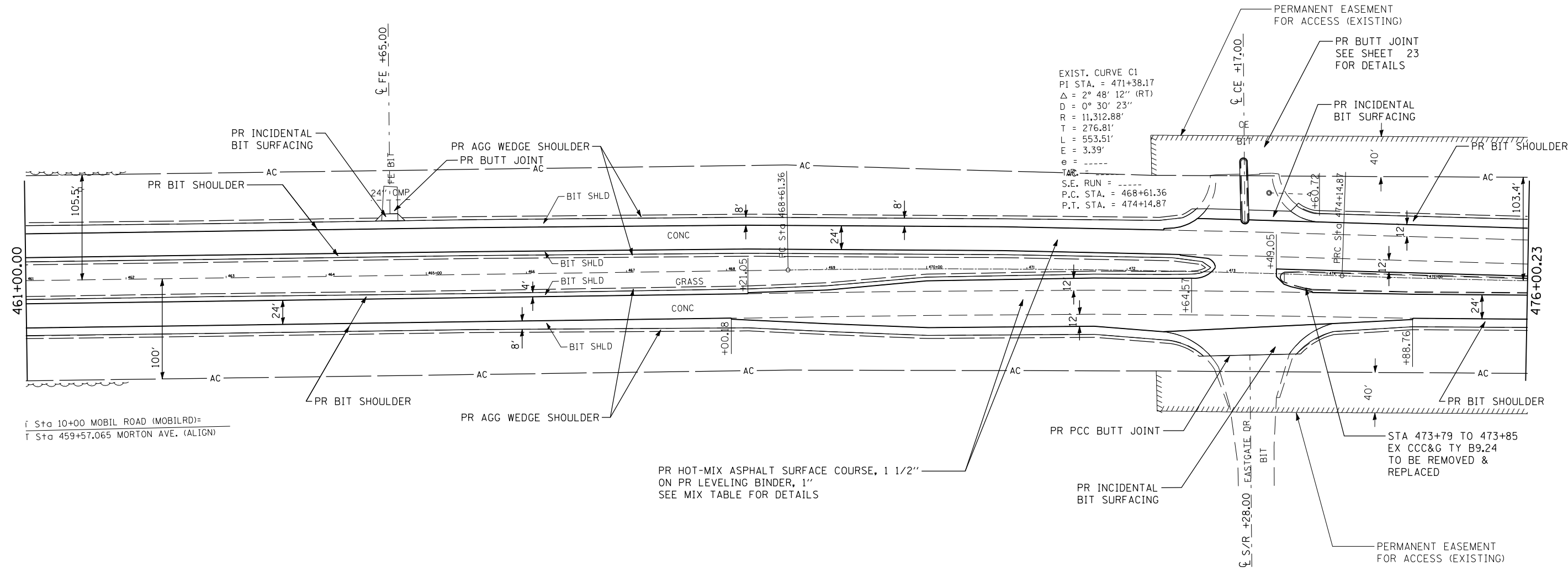
PLAN
 FAP 753 SPUR (OLD US 36)
 AND FAS 1613

SCALE: VERT.
 HORIZ.

DATE: _____

DRAWN BY: CFC, CCA
 CHECKED BY: CCA

| F.A.P. RTE. | SECTION | COUNTY | TOTAL SHEETS | SHEET NO. |
|---------------------|--------------|------------------|--------------|-----------|
| 753 | 25 RS-B, I-2 | MORGAN | 26 | 11 |
| STA. | | TO STA. | | |
| FED. ROAD DIST. NO. | ILLINOIS | FED. AID PROJECT | | |



Sta 10+00 MOBIL ROAD (MOBILRD)=
Sta 459+57.065 MORTON AVE. (ALIGN)

PR HOT-MIX ASPHALT SURFACE COURSE, 1 1/2"
ON PR LEVELING BINDER, 1"
SEE MIX TABLE FOR DETAILS

EXIST. CURVE C1
PI STA. = 471+38.17
Δ = 2° 48' 12'' (RT)
D = 0° 30' 23''
R = 11,312.88'
T = 276.81'
L = 553.51'
E = 3.39'
S.E. RUN =
P.C. STA. = 468+61.36
P.T. STA. = 474+14.87

| REVISIONS | |
|-----------|------|
| NAME | DATE |
| | |
| | |
| | |
| | |
| | |
| | |
| | |
| | |
| | |
| | |

ILLINOIS DEPARTMENT OF TRANSPORTATION

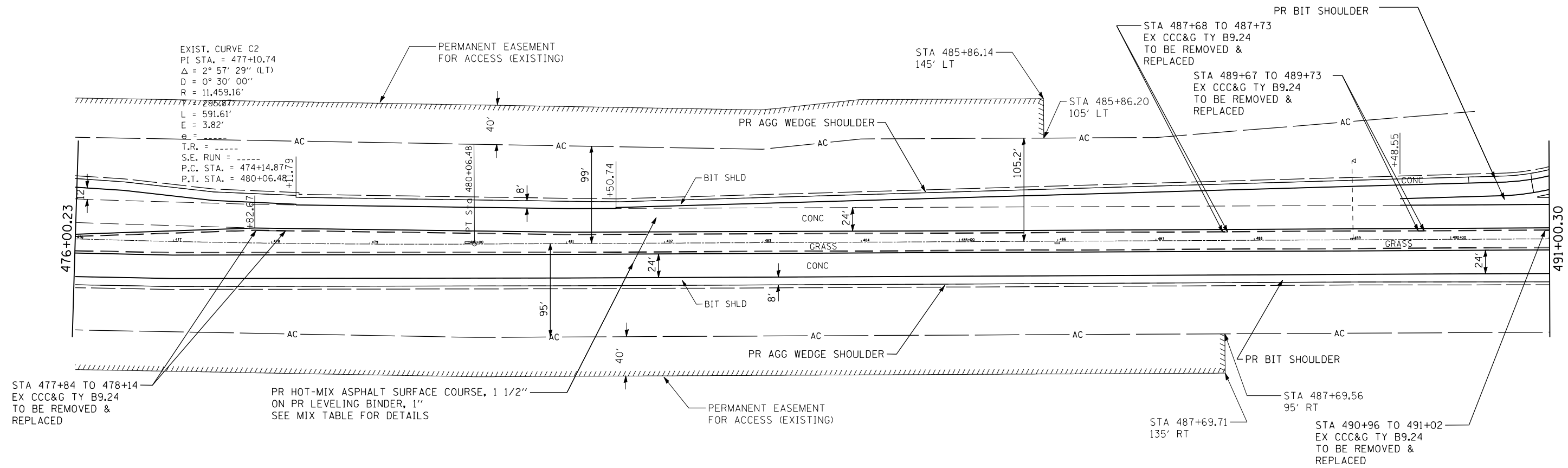
PLAN
FAP 753 SPUR (OLD US 36)
AND FAS 1613

SCALE: VERT.
HORIZ.
DATE:

DRAWN BY: CFC, CCA
CHECKED BY: CCA

PLOT DATE = \$DATE\$
FILE NAME = \$FILEL\$
PLOT SCALE = \$SCALE\$
USER NAME = \$USER\$

| F.A.P. RTE. | SECTION | COUNTY | TOTAL SHEETS | SHEET NO. |
|---------------------|--------------|------------------|--------------|-----------|
| 753 | 25 RS-B, I-2 | MORGAN | 26 | 12 |
| STA. | | TO STA. | | |
| FED. ROAD DIST. NO. | ILLINOIS | FED. AID PROJECT | | |



| REVISIONS | |
|-----------|------|
| NAME | DATE |
| | |
| | |
| | |
| | |
| | |
| | |
| | |
| | |
| | |
| | |

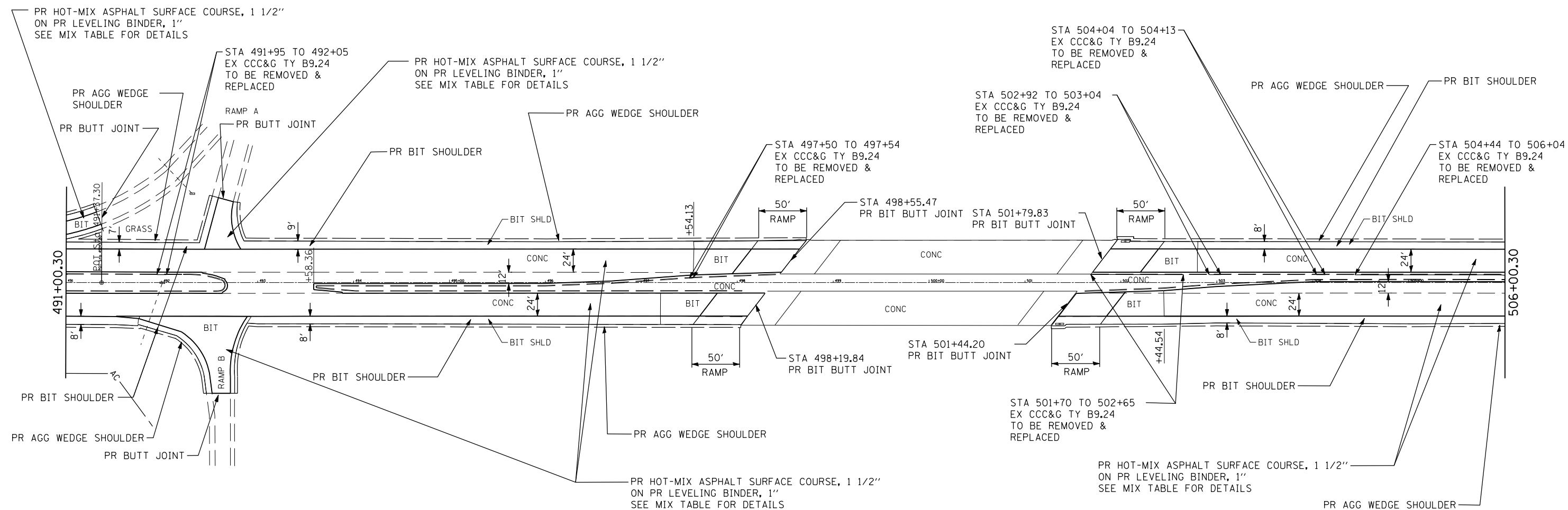
ILLINOIS DEPARTMENT OF TRANSPORTATION

PLAN
 FAP 753 SPUR (OLD US 36)
 AND FAS 1613

SCALE: VERT.
 HORIZ.
 DATE:

DRAWN BY: CFC, CCA
 CHECKED BY: CCA

| F.A.P. RTE. | SECTION | COUNTY | TOTAL SHEETS | SHEET NO. |
|---------------------|--------------|------------------|--------------|-----------|
| 753 | 25 RS-B, I-2 | MORGAN | 26 | 13 |
| STA. | | TO STA. | | |
| FED. ROAD DIST. NO. | ILLINOIS | FED. AID PROJECT | | |



PLOT DATE = \$DATE\$
 FILE NAME = \$FILEL\$
 PLOT SCALE = \$SCALE\$
 USER NAME = \$USER\$

| REVISIONS | |
|-----------|------|
| NAME | DATE |
| | |
| | |
| | |
| | |
| | |
| | |
| | |
| | |
| | |
| | |

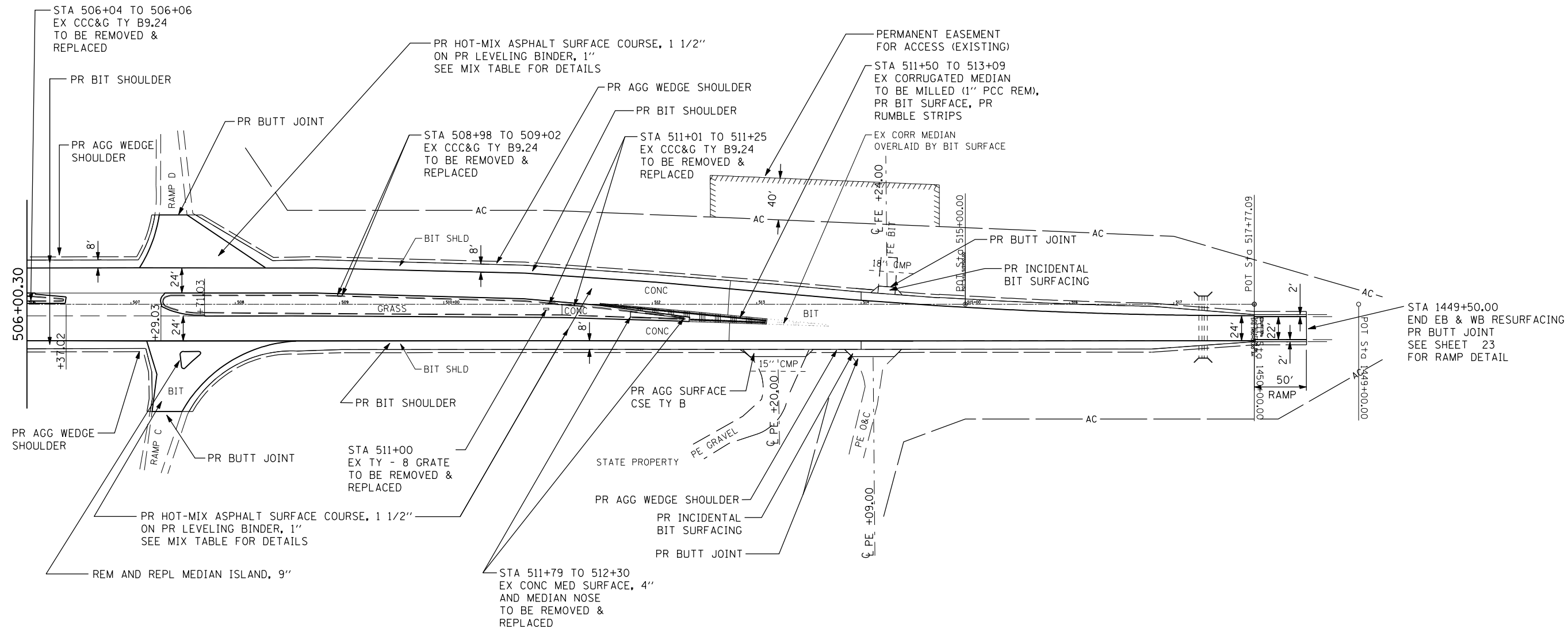
ILLINOIS DEPARTMENT OF TRANSPORTATION

PLAN
 FAP 753 SPUR (OLD US 36)
 AND FAS 1613

SCALE: VERT.
 HORIZ.
 DATE:

DRAWN BY: CFC, CCA
 CHECKED BY: CCA

| F.A.P. RTE. | SECTION | COUNTY | TOTAL SHEETS | SHEET NO. |
|---------------------|--------------|------------------|--------------|-----------|
| 753 | 25 RS-B, I-2 | MORGAN | 26 | 14 |
| STA. | | TO STA. | | |
| FED. ROAD DIST. NO. | ILLINOIS | FED. AID PROJECT | | |



PLOT DATE = \$DATE\$
 FILE NAME = \$FILEL\$
 PLOT SCALE = \$SCALE\$
 USER NAME = \$USER\$

| REVISIONS | |
|-----------|------|
| NAME | DATE |
| | |
| | |
| | |
| | |
| | |
| | |
| | |
| | |
| | |
| | |

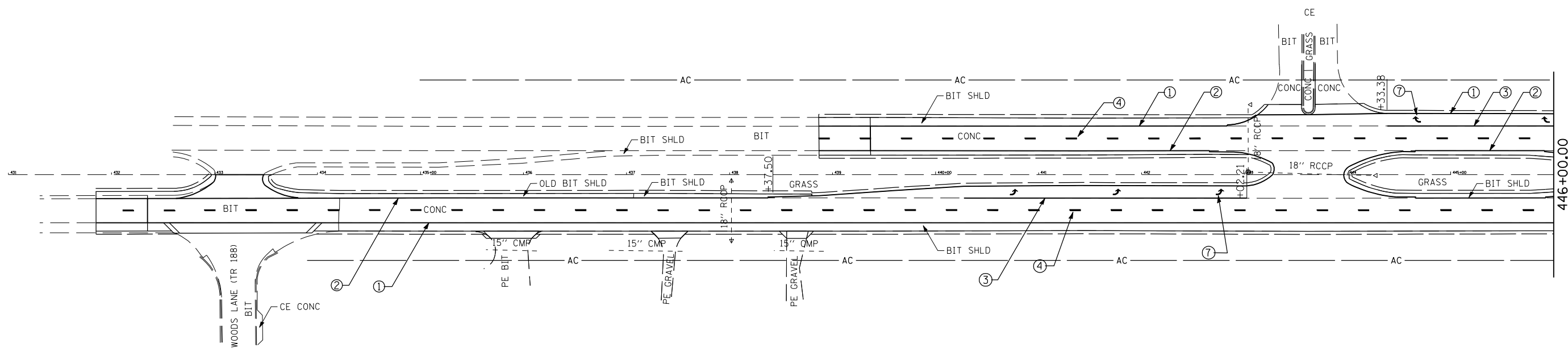
ILLINOIS DEPARTMENT OF TRANSPORTATION

PLAN
 FAP 753 SPUR (OLD US 36)
 AND FAS 1613

SCALE: VERT.
 HORIZ.
 DATE:

DRAWN BY: CFC, CCA
 CHECKED BY: CCA

| F.A.P. RTE. | SECTION | COUNTY | TOTAL SHEETS | SHEET NO. |
|---------------------|--------------|------------------|--------------|-----------|
| 753 | 25 RS-B, I-2 | MORGAN | 26 | 15 |
| STA. | | TO STA. | | |
| FED. ROAD DIST. NO. | ILLINOIS | FED. AID PROJECT | | |



PROPOSED PAVEMENT MARKING

- ① PR POLYUREA PVMT MARKING, TY 1, 5" SOLID WHITE •
- ② PR POLYUREA PVMT MARKING, TY 1, 5" SOLID YELLOW •
- ③ PR PPPM, TY B, 6" SOLID WHITE
- ④ PR PPPM, TY B, 5" WHITE (SKIP DASH)
- ⑤ PR PPPM, TY B, 5" YELLOW (SKIP DASH)
- ⑥ PR PPPM, TY B, 8" SOLID WHITE
- ⑦ PR PPPM, TY B, LETTERS & SYMBOLS, WHITE
- ⑧ PR PPPM, TY B, 12" SOLID WHITE
- ⑨ PR PPPM, TY B, 24" SOLID WHITE

• NO EOP MARKINGS THROUGH SIDEROADS OR CROSSOVERS

PLOT DATE = \$DATE\$
 FILE NAME = \$FILEL\$
 PLOT SCALE = \$SCALE\$
 USER NAME = \$USER\$

| REVISIONS | |
|-----------|------|
| NAME | DATE |
| | |
| | |
| | |
| | |
| | |
| | |
| | |
| | |
| | |
| | |

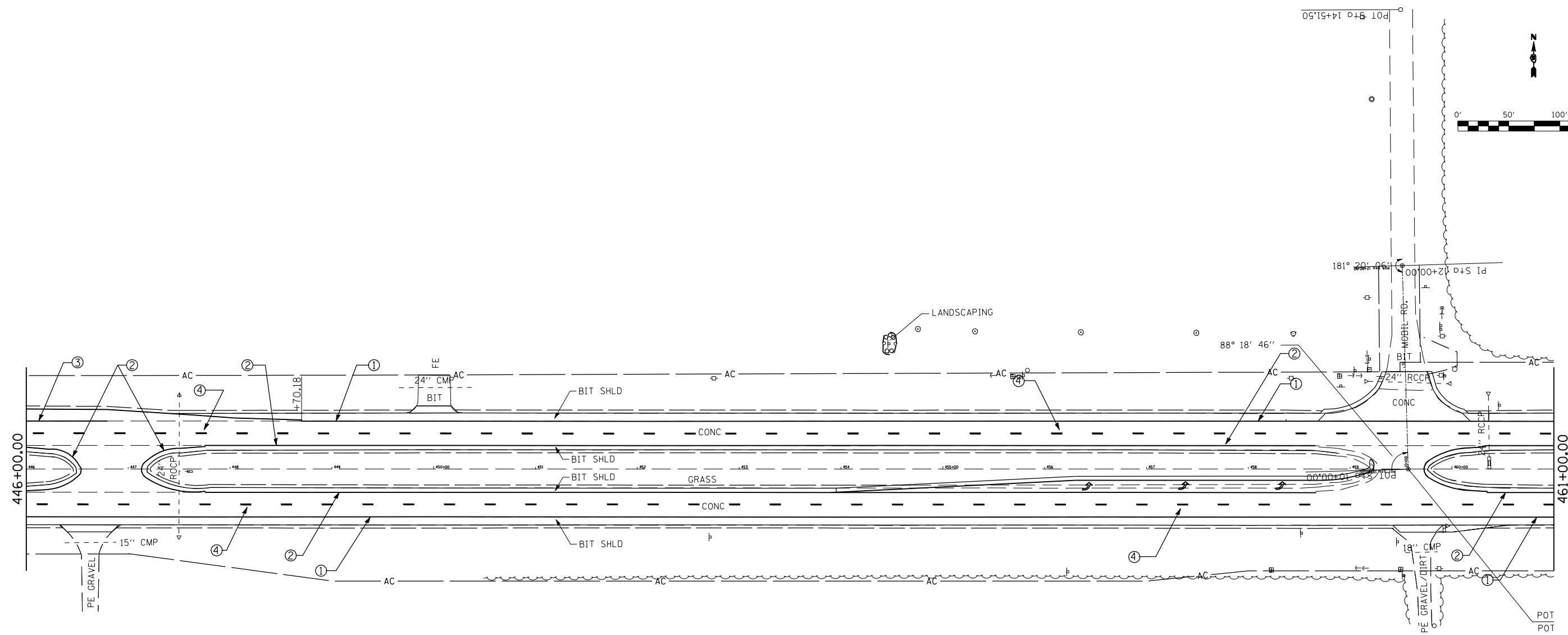
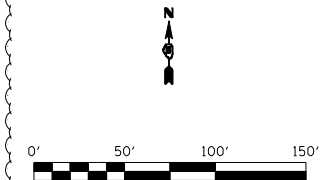
ILLINOIS DEPARTMENT OF TRANSPORTATION

PAVEMENT MARKING PLAN
 FAP 753 SPUR (OLD US 36)
 AND FAS 1613

SCALE: VERT. _____
 HORIZ. _____
 DATE: _____

DRAWN BY: CFC, CCA
 CHECKED BY: CCA

| F.A.P. RTE. | SECTION | COUNTY | TOTAL SHEETS | SHEET NO. |
|---------------------|--------------|------------------|--------------|-----------|
| 753 | 25 RS-B, I-2 | MORGAN | 26 | 16 |
| STA. | | TO STA. | | |
| FED. ROAD DIST. NO. | ILLINOIS | FED. AID PROJECT | | |



PROPOSED PAVEMENT MARKING

- ① PR POLYUREA PVMT MARKING, TY 1, 5" SOLID WHITE •
- ② PR POLYUREA PVMT MARKING, TY 1, 5" SOLID YELLOW •
- ③ PR PPPM, TY B, 6" SOLID WHITE
- ④ PR PPPM, TY B, 5" WHITE (SKIP DASH)
- ⑤ PR PPPM, TY B, 5" YELLOW (SKIP DASH)
- ⑥ PR PPPM, TY B, 8" SOLID WHITE
- ⑦ PR PPPM, TY B, LETTERS & SYMBOLS, WHITE
- ⑧ PR PPPM, TY B, 12" SOLID WHITE
- ⑨ PR PPPM, TY B, 24" SOLID WHITE

• NO EOP MARKINGS THROUGH SIDEROADS OR CROSSOVERS

| REVISIONS | |
|-----------|------|
| NAME | DATE |
| | |
| | |
| | |
| | |
| | |
| | |
| | |
| | |
| | |
| | |

ILLINOIS DEPARTMENT OF TRANSPORTATION

PAVEMENT MARKING PLAN
 FAP 753 SPUR (OLD US 36)
 AND FAS 1613

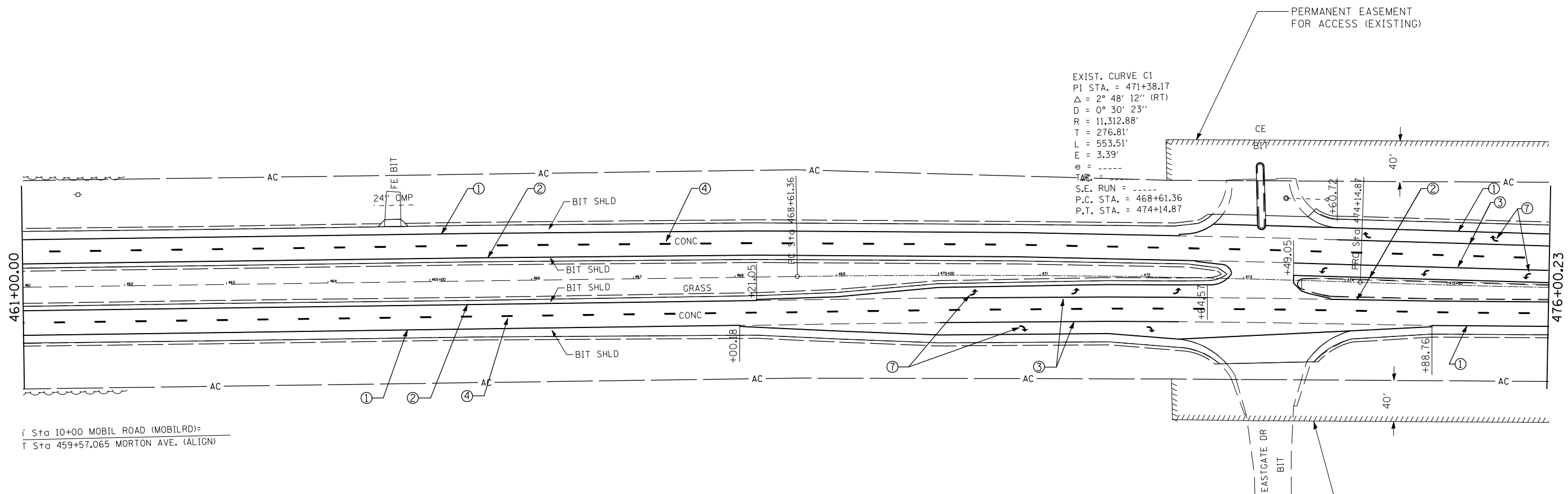
SCALE: VERT. _____
 HORIZ. _____

DATE: _____

DRAWN BY: CFC, CCA
 CHECKED BY: CCA

PLOT DATE = \$DATE\$
 FILE NAME = \$FILEL\$
 PLOT SCALE = \$SCALE\$
 USER NAME = \$USER\$

| F.A.P. RTE. | SECTION | COUNTY | TOTAL SHEETS | SHEET NO. |
|---------------------|--------------|------------------|--------------|-----------|
| 753 | 25 RS-B, I-2 | MORGAN | 26 | 17 |
| STA. | | TO STA. | | |
| FED. ROAD DIST. NO. | ILLINOIS | FED. AID PROJECT | | |



EXIST. CURVE C1
 PI STA. = 471+38.17
 $\Delta = 2^\circ 48' 12''$ (RT)
 $D = 0^\circ 30' 23''$
 $R = 11,312.88'$
 $T = 276.81'$
 $L = 553.51'$
 $E = 3.39'$
 $e = \dots$
 TARE = \dots
 S.E. RUN = \dots
 P.C. STA. = 468+61.36
 P.T. STA. = 474+14.87

Sta 10+00 MOBIL ROAD (MOBILRD)=
 Sta 459+57.065 MORTON AVE. (ALIGN)

PROPOSED PAVEMENT MARKING

- ① PR POLYUREA PVMT MARKING, TY 1, 5" SOLID WHITE •
- ② PR POLYUREA PVMT MARKING, TY 1, 5" SOLID YELLOW •
- ③ PR PPPM, TY B, 6" SOLID WHITE
- ④ PR PPPM, TY B, 5" WHITE (SKIP DASH)
- ⑤ PR PPPM, TY B, 5" YELLOW (SKIP DASH)
- ⑥ PR PPPM, TY B, 8" SOLID WHITE
- ⑦ PR PPPM, TY B, LETTERS & SYMBOLS, WHITE
- ⑧ PR PPPM, TY B, 12" SOLID WHITE
- ⑨ PR PPPM, TY B, 24" SOLID WHITE

• NO EOP MARKINGS THROUGH SIDEROADS OR CROSSOVERS

| REVISIONS | |
|-----------|------|
| NAME | DATE |
| | |
| | |
| | |
| | |
| | |
| | |
| | |
| | |
| | |
| | |

ILLINOIS DEPARTMENT OF TRANSPORTATION

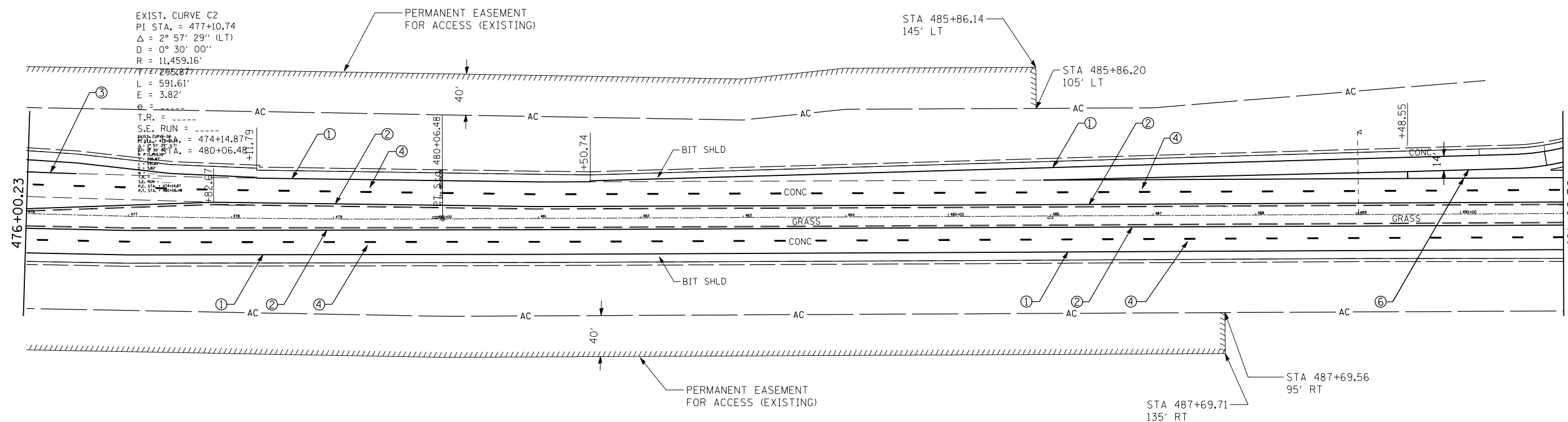
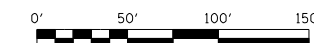
PAVEMENT MARKING PLAN
 FAP 753 SPUR (OLD US 36)
 AND FAS 1613

SCALE: VERT. _____
 HORIZ. _____
 DATE: _____

DRAWN BY: CFC, CCA
 CHECKED BY: CCA

PLOT DATE = \$DATE\$
 FILE NAME = \$FILEL\$
 PLOT SCALE = \$SCALE\$
 USER NAME = \$USER\$

| F.A.P. RTE. | SECTION | COUNTY | TOTAL SHEETS | SHEET NO. |
|---------------------|--------------|------------------|--------------|-----------|
| 753 | 25 RS-B, I-2 | MORGAN | 26 | 18 |
| STA. | | TO STA. | | |
| FED. ROAD DIST. NO. | ILLINOIS | FED. AID PROJECT | | |



PROPOSED PAVEMENT MARKING

- ① PR POLYUREA PVMT MARKING, TY 1, 5" SOLID WHITE •
- ② PR POLYUREA PVMT MARKING, TY 1, 5" SOLID YELLOW •
- ③ PR PPPM, TY B, 6" SOLID WHITE
- ④ PR PPPM, TY B, 5" WHITE (SKIP DASH)
- ⑤ PR PPPM, TY B, 5" YELLOW (SKIP DASH)
- ⑥ PR PPPM, TY B, 8" SOLID WHITE
- ⑦ PR PPPM, TY B, LETTERS & SYMBOLS, WHITE
- ⑧ PR PPPM, TY B, 12" SOLID WHITE
- ⑨ PR PPPM, TY B, 24" SOLID WHITE

• NO EOP MARKINGS THROUGH SIDEROADS OR CROSSOVERS

| REVISIONS | |
|-----------|------|
| NAME | DATE |
| | |
| | |
| | |
| | |
| | |
| | |
| | |
| | |
| | |
| | |

ILLINOIS DEPARTMENT OF TRANSPORTATION

PAVEMENT MARKING PLAN
FAP 753 SPUR (OLD US 36)
AND FAS 1613

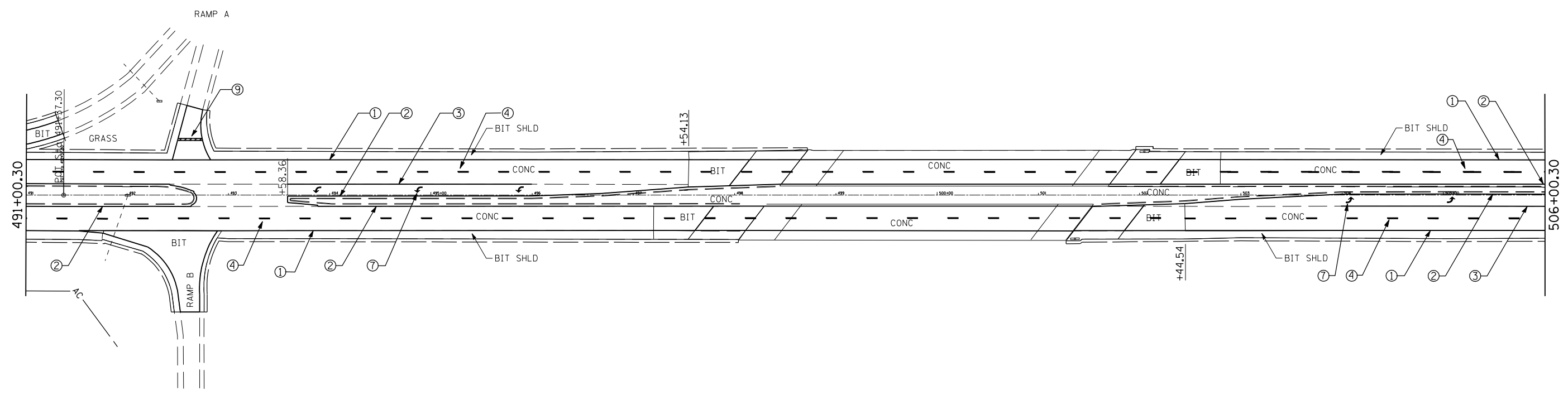
SCALE: VERT. _____
 HORIZ. _____

DATE: _____

DRAWN BY: CFC, CCA
 CHECKED BY: CCA

PLOT DATE = \$DATE\$
 FILE NAME = \$FILEL\$
 PLOT SCALE = \$SCALE\$
 USER NAME = \$USER\$

| | | | | |
|---------------------|--------------|------------------|--------------|-----------|
| F.A.P. RTE. | SECTION | COUNTY | TOTAL SHEETS | SHEET NO. |
| 753 | 25 RS-B, I-2 | MORGAN | 26 | 19 |
| STA. | | TO STA. | | |
| FED. ROAD DIST. NO. | ILLINOIS | FED. AID PROJECT | | |



PROPOSED PAVEMENT MARKING

- ① PR POLYUREA PVMT MARKING, TY 1, 5" SOLID WHITE •
- ② PR POLYUREA PVMT MARKING, TY 1, 5" SOLID YELLOW •
- ③ PR PPPM, TY B, 6" SOLID WHITE
- ④ PR PPPM, TY B, 5" WHITE (SKIP DASH)
- ⑤ PR PPPM, TY B, 5" YELLOW (SKIP DASH)
- ⑥ PR PPPM, TY B, 8" SOLID WHITE
- ⑦ PR PPPM, TY B, LETTERS & SYMBOLS, WHITE
- ⑧ PR POLYUREA PVMT MARKING, TY 2, 12" SOLID WHITE
- ⑨ PR PPPM, TY B, 24" SOLID WHITE

• NO EOP MARKINGS THROUGH SIDEROADS OR CROSSOVERS

| REVISIONS | |
|-----------|------|
| NAME | DATE |
| | |
| | |
| | |
| | |
| | |
| | |
| | |
| | |
| | |
| | |

ILLINOIS DEPARTMENT OF TRANSPORTATION

PAVEMENT MARKING PLAN
FAP 753 SPUR (OLD US 36)
AND FAS 1613

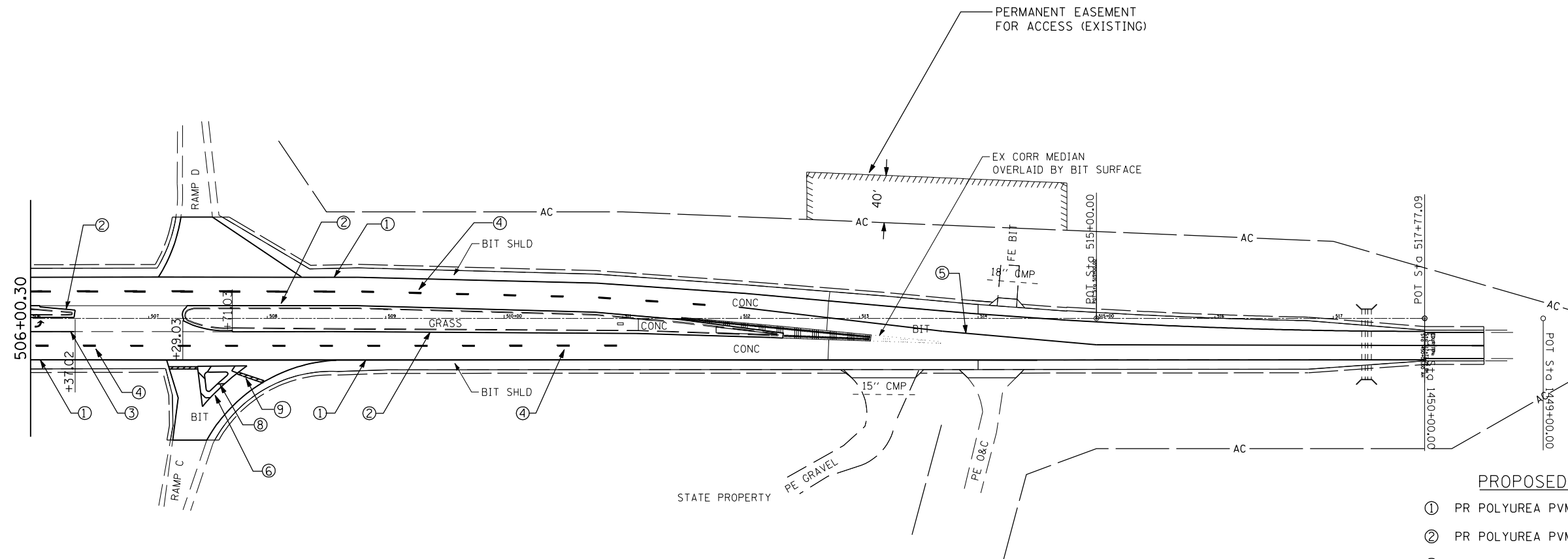
SCALE: VERT. _____
 HORIZ. _____

DATE: _____

DRAWN BY: CFC, CCA
 CHECKED BY: CCA

PLOT DATE = \$DATE\$
 FILE NAME = \$FILEL\$
 PLOT SCALE = \$SCALE\$
 USER NAME = \$USER\$

| F.A.P. RTE. | SECTION | COUNTY | TOTAL SHEETS | SHEET NO. |
|---------------------|--------------|------------------|--------------|-----------|
| 753 | 25 RS-B, I-2 | MORGAN | 26 | 20 |
| STA. | | TO STA. | | |
| FED. ROAD DIST. NO. | ILLINOIS | FED. AID PROJECT | | |



PROPOSED PAVEMENT MARKING

- ① PR POLYUREA PVMT MARKING, TY 1, 5" SOLID WHITE •
 - ② PR POLYUREA PVMT MARKING, TY 1, 5" SOLID YELLOW •
 - ③ PR PPPM, TY B, 6" SOLID WHITE
 - ④ PR PPPM, TY B, 5" WHITE (SKIP DASH)
 - ⑤ PR PPPM, TY B, 5" YELLOW (SKIP DASH)
 - ⑥ PR PPPM, TY B, 8" SOLID WHITE
 - ⑦ PR PPPM, TY B, LETTERS & SYMBOLS, WHITE
 - ⑧ PR PPPM, TY B, 12" SOLID WHITE
 - ⑨ PR PPPM, TY B, 24" SOLID WHITE
- NO EOP MARKINGS THROUGH SIDEROADS OR CROSSOVERS

| REVISIONS | |
|-----------|------|
| NAME | DATE |
| | |
| | |
| | |
| | |
| | |
| | |
| | |
| | |
| | |
| | |

ILLINOIS DEPARTMENT OF TRANSPORTATION

PAVEMENT MARKING PLAN
FAP 753 SPUR (OLD US 36)
AND FAS 1613

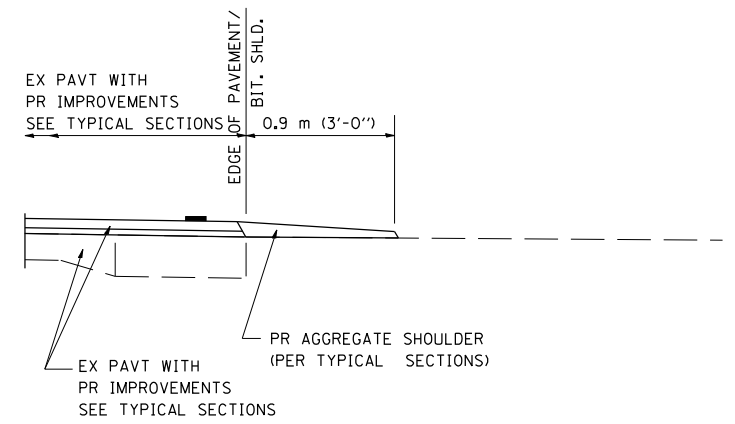
SCALE: VERT. _____
 HORIZ. _____

DATE: _____

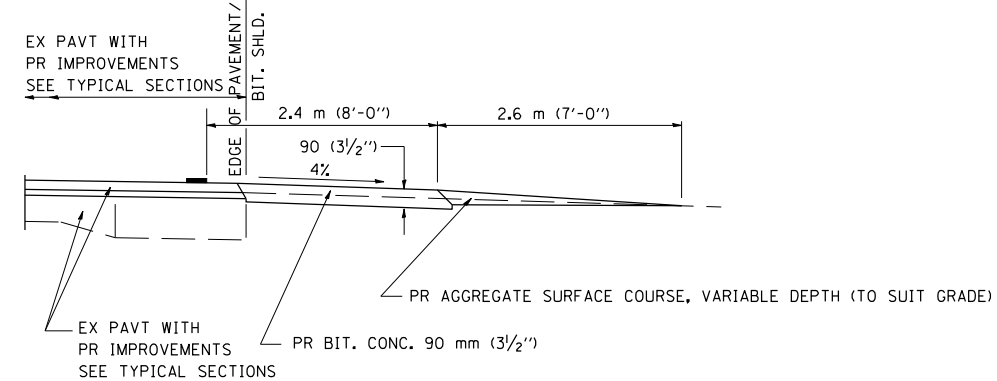
DRAWN BY: CFC, CCA
 CHECKED BY: CCA

PLOT DATE = \$DATE\$
 FILE NAME = \$FILEL\$
 PLOT SCALE = \$SCALE\$
 USER NAME = \$USER\$

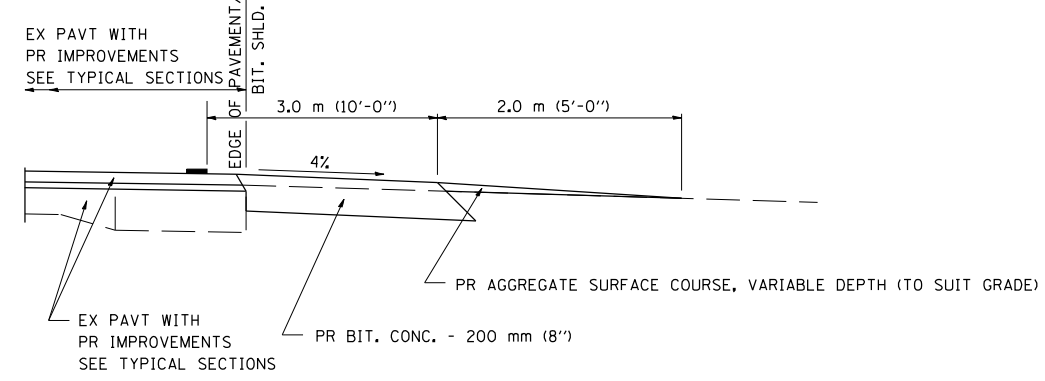
| | | | | |
|---------------------|--------------|------------------|--------------|-----------|
| F.A. RTE. | SECTION | COUNTY | TOTAL SHEETS | SHEET NO. |
| 753 | 25 RS-8, 1-2 | MORGAN | 26 | 21 |
| STA. | | TO STA. | | |
| FED. ROAD DIST. NO. | ILLINOIS | FED. AID PROJECT | | |



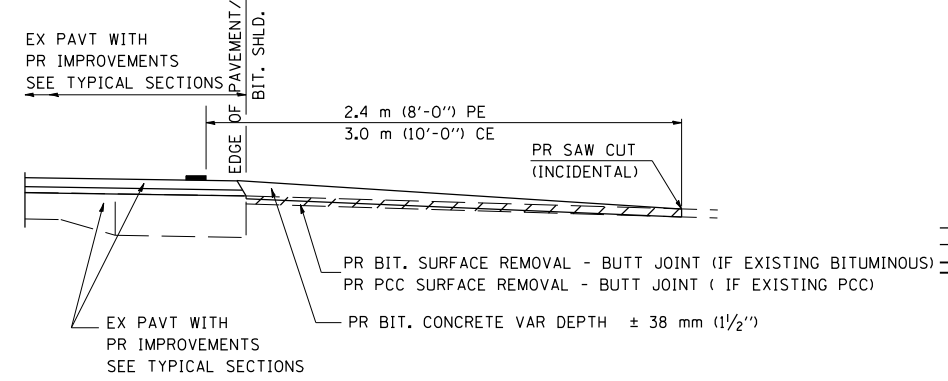
SECTION A-A FOR EX EARTH/AGGREGATE FE



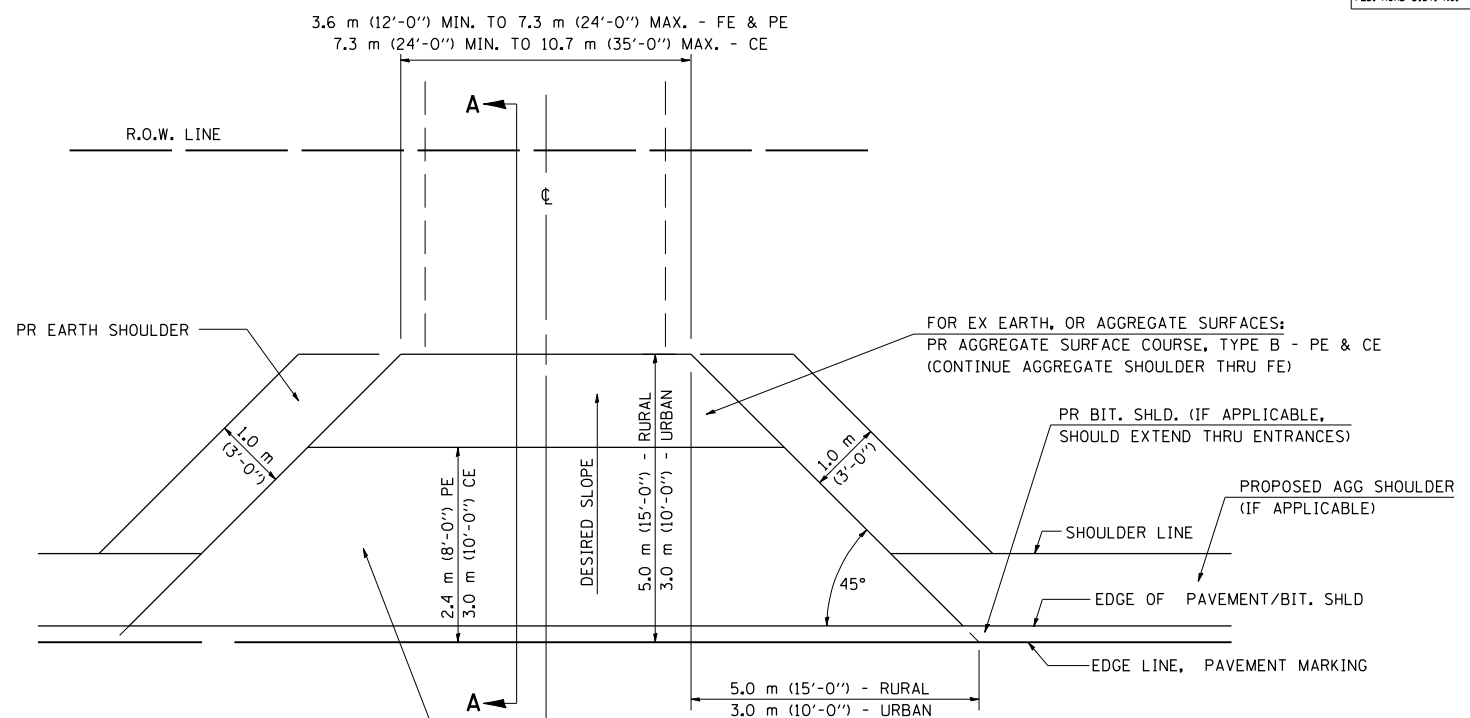
SECTION A-A FOR EX EARTH/AGGREGATE PE



SECTION A-A FOR EX EARTH/AGGREGATE CE & SIDE ROAD



SECTION A-A FOR EX BITUMINOUS/ PC CONCRETE PE, CE & SIDE ROAD



FOR EX EARTH OR AGGREGATE SURFACES:
PR BIT SURFACE REMOVAL (IF APPLICABLE)
PR AGGREGATE SHOULDER THRU - FE
PR BITUMINOUS CONCRETE 90 mm (3 1/2'') - PE
PR BITUMINOUS CONCRETE 200mm (8'') - CE

FOR EX BITUMINOUS CONCRETE SURFACES:
PR BITUMINOUS SURFACE REMOVAL-BUTT JOINT

FOR EX PCC SURFACES:
PR PCC SURFACE REMOVAL-BUTT JOINT

GENERAL NOTES:

THE RESIDENT ENGINEER WILL DETERMINE THE EXACT TYPE OF IMPROVEMENT TO BE COMPLETED FOR ALL ENTRANCES, SIDEROADS AND MAILBOX TURNOUTS ON THIS PROJECT.

THE PLAN DETAILS AND SCHEDULES SHOULD BE USED AS A GUIDE FOR THE ENGINEER TO IMPLEMENT THE FINAL DESIGN. THE ENGINEER MAY DECIDE TO SALVAGE PORTIONS OF THE EXISTING ENTRANCE PAVEMENT STRUCTURE; THEREFORE, REDUCING PAY ITEM QUANTITIES. NO ADDITIONAL PAYMENT WILL BE ALLOWED FOR THIS REDUCTION IN QUANTITIES.

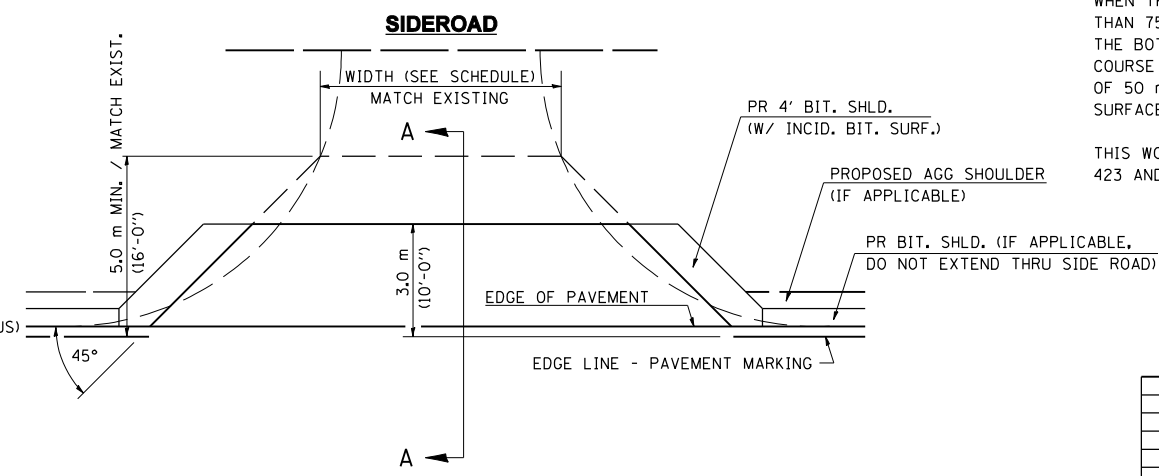
ANY WORK THE ENGINEER REQUIRES WHICH IS NOT COVERED BY A PAY ITEM CONTAINED IN THE PLANS WILL BE PAID FOR IN ACCORDANCE WITH ARTICLE 109.04 OF THE STANDARD SPECIFICATIONS.

BITUMINOUS CONCRETE REQUIRED TO CONSTRUCT THE ENTRANCES SHALL BE IN ACCORDANCE WITH THE APPLICABLE PORTIONS OF SECTION 406 AND 408 OF THE STANDARD SPECIFICATIONS AND AS DIRECTED BY THE ENGINEER.

WHEN THE BITUMINOUS CONCRETE PROPOSED FOR THE IMPROVEMENT IS THICKER THAN 75 mm (3 INCHES) AND REQUIRE PLACEMENT IN MORE THAN ONE LIFT. THE BOTTOM LIFT(S) SHALL MEET THE REQUIREMENTS OF BITUMINOUS BASE COURSE IN SECTION 406 OF THE STANDARD SPECIFICATIONS AND THE TOP LIFT OF 50 mm (2 INCHES) SHALL MEET THE REQUIREMENTS OF BITUMINOUS CONCRETE SURFACE COURSE, SUPERPAVE.

THIS WORK WILL BE PAID FOR IN ACCORDANCE WITH SECTIONS 351, 358, 408, 423 AND 440 OF THE STANDARD SPECIFICATIONS.

ALL DIMENSIONS ARE IN MILLIMETERS (INCHES) UNLESS OTHERWISE SHOWN.



NOTE : IF BIT. SHLDS ARE PROPOSED THEY SHOULD NOT EXTEND THROUGH SIDEROADS

| REVISIONS | |
|-----------|---------|
| NAME | DATE |
| JCN | 2/19/03 |
| JCN | 4/01/04 |
| | |
| | |
| | |
| | |
| | |
| | |
| | |

SHEET 1 OF 3

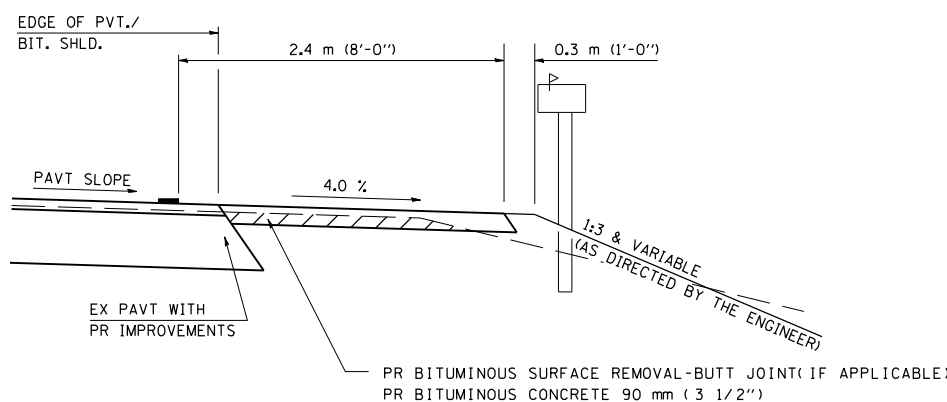
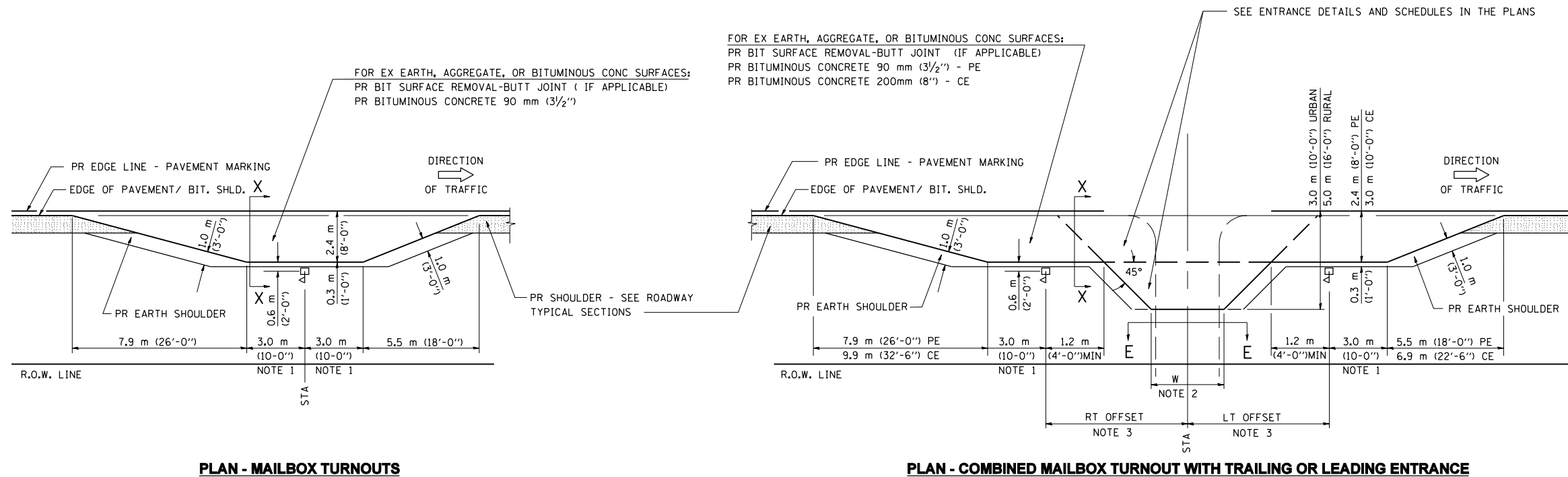
ILLINOIS DEPARTMENT OF TRANSPORTATION
DISTRICT SIX
DETAILS FOR RURAL / URBAN
ENTRANCE, MAILBOX TURNOUT
& SIDEROADS
W / O CONCRETE GUTTER
(PPP - PROJECTS)

SCALE: VERT. DRAWN BY CADD
HORIZ. CHECKED BY JCN
DATE: FEBRUARY 23, 1999

ENT PPP

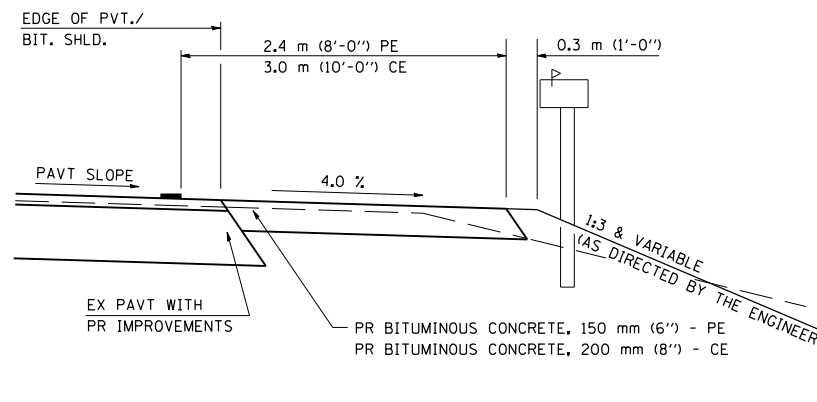
| | | | | |
|---------------------|--------------|------------------|--------------|-----------|
| F.A. RTE. | SECTION | COUNTY | TOTAL SHEETS | SHEET NO. |
| | 25 RS-8, I-2 | | 26 | 22 |
| STA. | | TO STA. | | |
| FED. ROAD DIST. NO. | ILLINOIS | FED. AID PROJECT | | |

DETAILS OF MAILBOX TURNOUTS



SECTION X-X THRU MAILBOX TURNOUT
ALSO APPLIES TO MAILBOX TURNOUTS COMBINED WITH
EX EARTH, AGGREGATE, OR BITUMINOUS PE & FE

(DETAIL APPLIES WHEN M.B. TURNOUT DOES NOT EXIST.
 IF EXISTING, TREAT SAME AS ENTRANCE.)



SECTION X-X THRU MAILBOX TURNOUT
COMBINED WITH EX BITUMINOUS CONC & PC CONC PE & CE

(DETAIL APPLIES WHEN M.B. TURNOUT DOES NOT EXIST.
 IF EXISTING, TREAT SAME AS ENTRANCE.)

- NOTE 1 IF MORE THAN ONE MAILBOX IS PRESENT, DIMENSION FROM CENTER OF END MAILBOX.
- NOTE 2 FOR ENTRANCE LAYOUT DIMENSIONS AND SECTIONS A-A & E-E REFER TO THE SCHEDULES IN THE PLANS.
- NOTE 3 BOTH LT OR RT OFFSETS FOR MAILBOX SHOWN USE OFFSET DIMENSION PER SCHEDULE AND REFER TO LAYOUT SHOWN ON THE PLAN.

ALL DIMENSIONS ARE IN MILLIMETERS (INCHES)
 UNLESS OTHERWISE SHOWN.

SHEET 2 OF 3



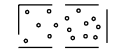


| REVISIONS | |
|-----------|---------|
| NAME | DATE |
| JCN | 2/19/03 |
| JCN | 4/01/04 |
| | |
| | |
| | |
| | |
| | |
| | |
| | |

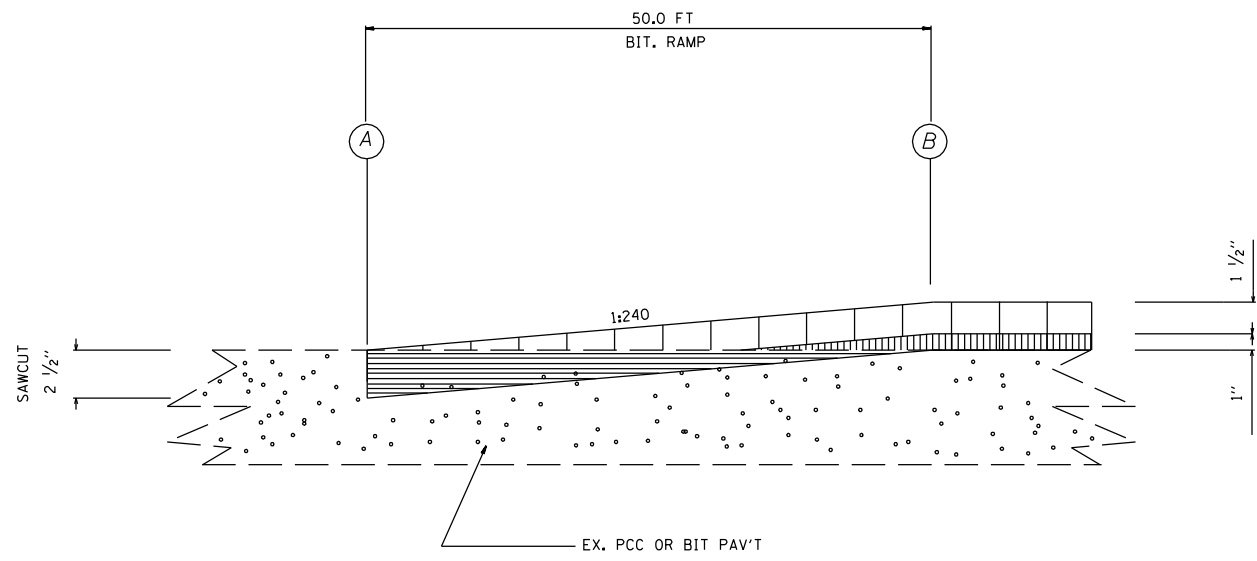
ILLINOIS DEPARTMENT OF TRANSPORTATION
DISTRICT SIX
DETAILS FOR RURAL / URBAN
ENTRANCE, MAILBOX TURNOUT
& SIDEROADS
W / O CONCRETE GUTTER
(PPP - PROJECTS)

SCALE: VERT. DRAWN BY CADD
 HORIZ. CHECKED BY JCN
 DATE: FEBRUARY 23, 1999

ENT PPP

| F.A.P. RTE. | SECTION | COUNTY | TOTAL SHEETS | SHEET NO. |
|---------------------|--------------|------------------|--------------|-----------|
| 753 | 25 RS-B, I-2 | MORGAN | 26 | 23 |
| STA. | | TO STA. | | |
| FED. ROAD DIST. NO. | ILLINOIS | FED. AID PROJECT | | |

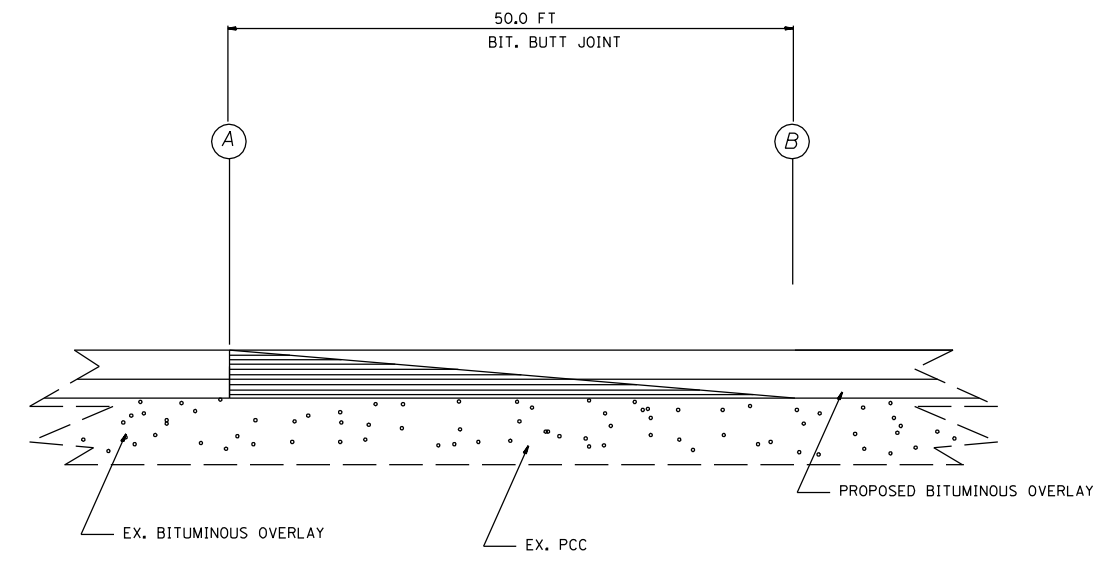
-  PCC OR BITUMINOUS SURFACE REMOVAL
-  PROPOSED HOT-MIX ASPHALT SURFACE COURSE, 1 1/2"
-  EXISTING PCC OR BITUMINOUS CONCRETE PAVEMENT
-  PROPOSED LEVELING BINDER, 1"
-  PROPOSED HOT-MIX ASPHALT BINDER COURSE, 4"



SIDE ROAD AND PRIVATE ENTRANCES
BUTT JOINT DETAIL

NOTE:
BUTT JOINT LOCATION SHALL BE VERIFIED
IN THE FIELD BY THE ENGINEER.

| A | B |
|------------------|------------------|
| EB STA 431+85 | EB STA 432+35 |
| WB STA 438+88 | WB STA 439+38 |
| EB STA 498+19.84 | EB STA 497+69.84 |
| WB STA 498+55.47 | WB STA 498+05.57 |
| EB STA 501+44.20 | EB STA 501+94.20 |
| WB STA 501+79.83 | WB STA 502+29.41 |
| STA 1449+50 | STA 1450+00 |



MAINLINE
BUTT JOINT DETAIL

NOTE: NOT TO SCALE

| REVISIONS | |
|-----------|------|
| NAME | DATE |
| | |
| | |
| | |
| | |
| | |
| | |
| | |
| | |
| | |
| | |

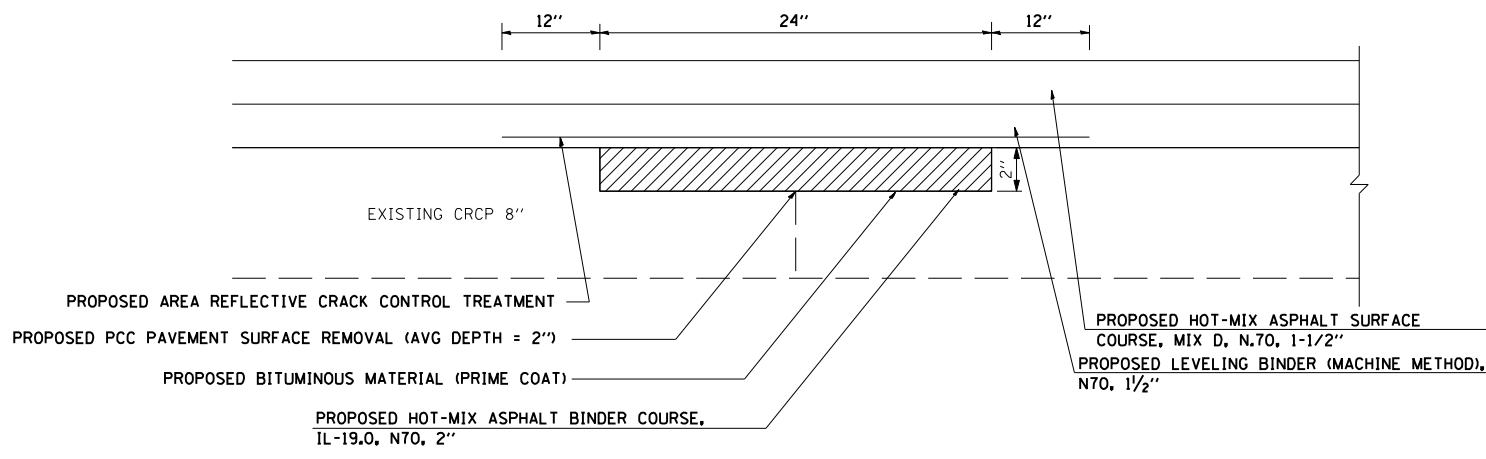
ILLINOIS DEPARTMENT OF TRANSPORTATION

BUTT JOINT DETAIL

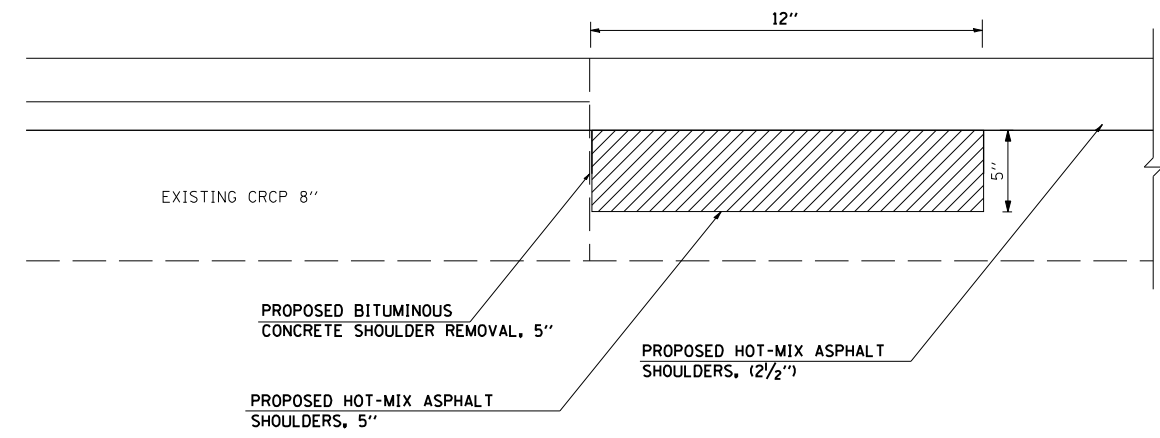
SCALE: VERT. DRAWN BY: CFC, CCA
 HORIZ. CHECKED BY: CCA
 DATE:

| | | | | |
|---------------------|-------------|------------------|--------------|-----------|
| F.A.P. RTE. | SECTION | COUNTY | TOTAL SHEETS | SHEET NO. |
| 753 | 25RS-8, I-2 | MORGAN | 26 | 24 |
| STA. | | TO STA. | | |
| FED. ROAD DIST. NO. | ILLINOIS | FED. AID PROJECT | | |

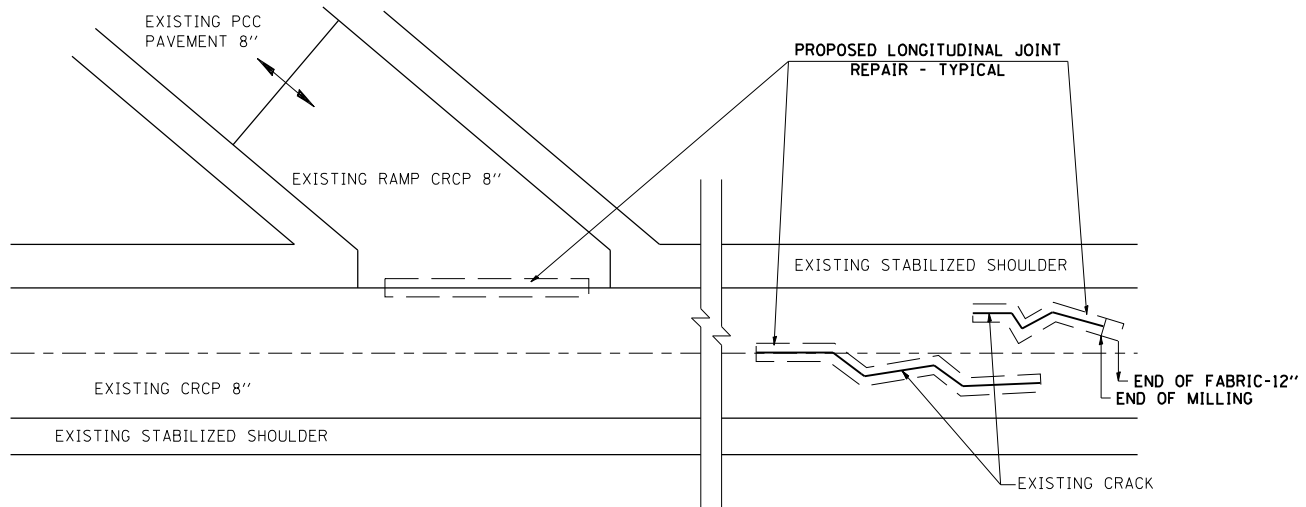
CONTRACT NO. 72948



PROPOSED LONGITUDINAL JOINT REPAIR DETAIL (TYPICAL)



PROPOSED SHOULDER REPAIR DETAIL (TYPICAL)
(SEE SCHEDULE FOR LOCATIONS)



LONGITUDINAL JOINT REPAIR (PLAN VIEW)

NOTE : THE ENGINEER IN THE FIELD SHALL DETERMINE AND LOCATE ALL AREAS FOR REPAIR

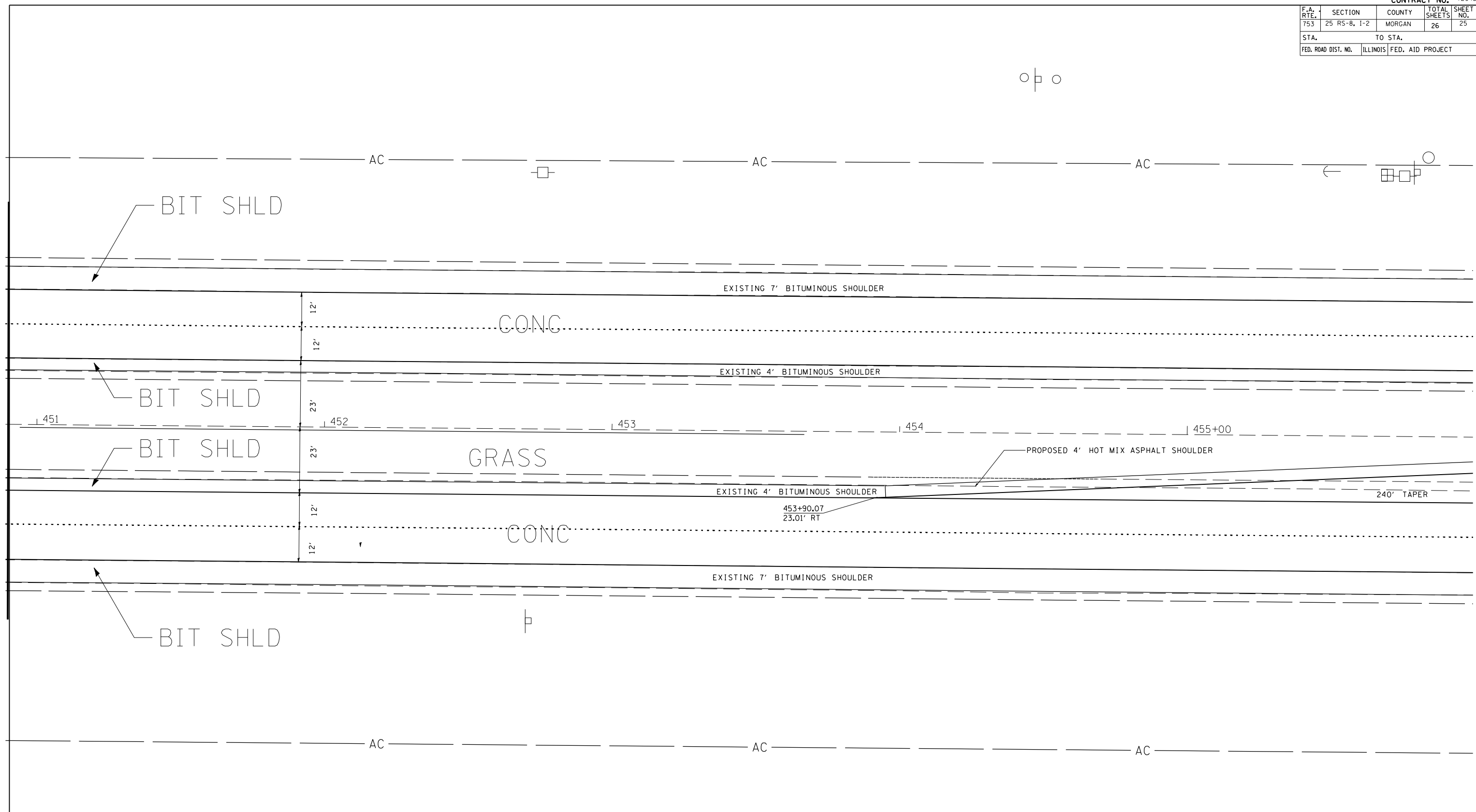
| REVISIONS | |
|-----------|------|
| NAME | DATE |
| | |
| | |
| | |
| | |
| | |
| | |
| | |
| | |
| | |
| | |

ILLINOIS DEPARTMENT OF TRANSPORTATION

LONGITUDINAL JOINT REPAIR

SCALE: VERT. DRAWN BY LLO
 HORIZ. CHECKED BY
 DATE: OCTOBER 2005

| F.A. RTE. | SECTION | COUNTY | TOTAL SHEETS | SHEET NO. |
|---------------------|--------------|------------------|--------------|-----------|
| 753 | 25 RS-8, 1-2 | MORGAN | 26 | 25 |
| STA. | | TO STA. | | |
| FED. ROAD DIST. NO. | ILLINOIS | FED. AID PROJECT | | |



MATCHLINE 456+00

PLOT DATE : \$DATE\$
 FILE NAME : \$FILEL\$
 PLOT SCALE : \$SCALE\$
 USER NAME : \$USER\$

| REVISIONS | |
|-----------|------|
| NAME | DATE |
| | |
| | |
| | |
| | |
| | |
| | |
| | |
| | |

ILLINOIS DEPARTMENT OF TRANSPORTATION
INTERSECTION DETAIL
 FAP 753 SPUR (OLD US 36)
 AND CH 32/ MOBIL RD.
 SCALE: VERT. _____
 HORIZ. _____
 DATE _____ DRAWN BY _____
 CHECKED BY _____

