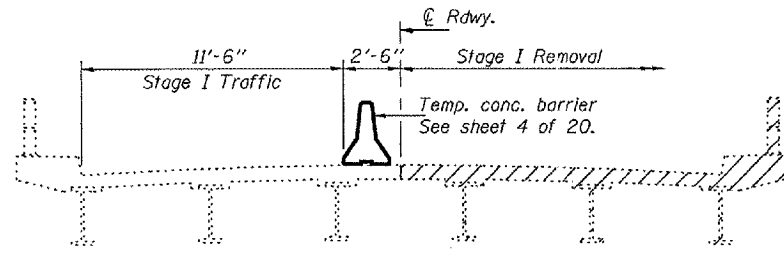


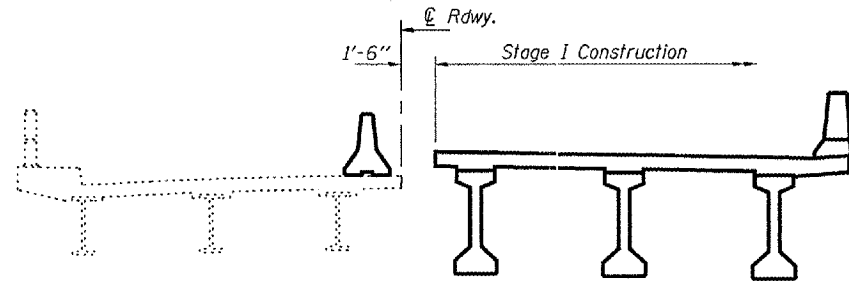
STATE OF ILLINOIS
DEPARTMENT OF TRANSPORTATION

ROUTE NO.	SECTION	COUNTY	SHEET	SHEET NO.
FAP 662	(V,T)B-2	MACOUPIN	60 33	20
FED. ROAD DIST. NO. 7		ILLINOIS	PROJECT	

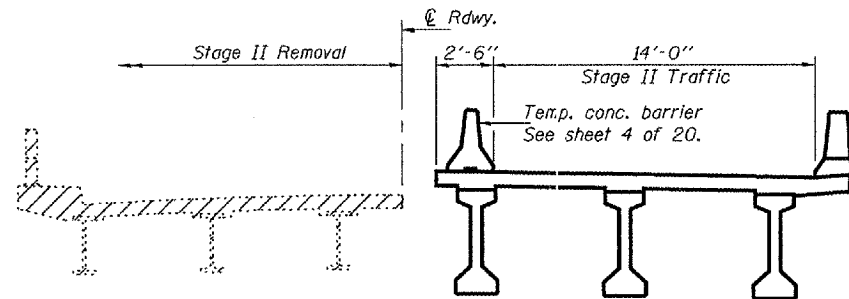
Contract #72993



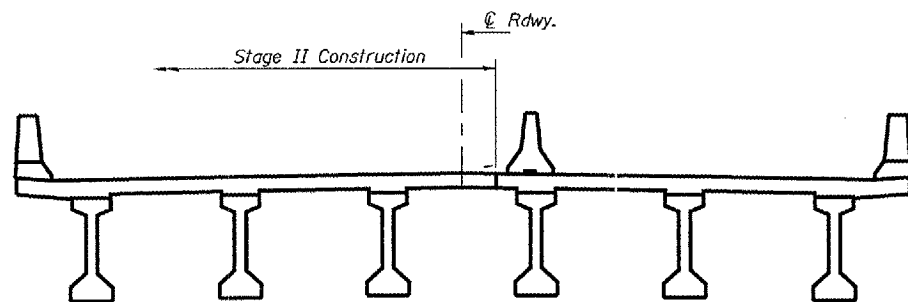
***STAGE I REMOVAL



***STAGE I CONSTRUCTION



***STAGE II REMOVAL



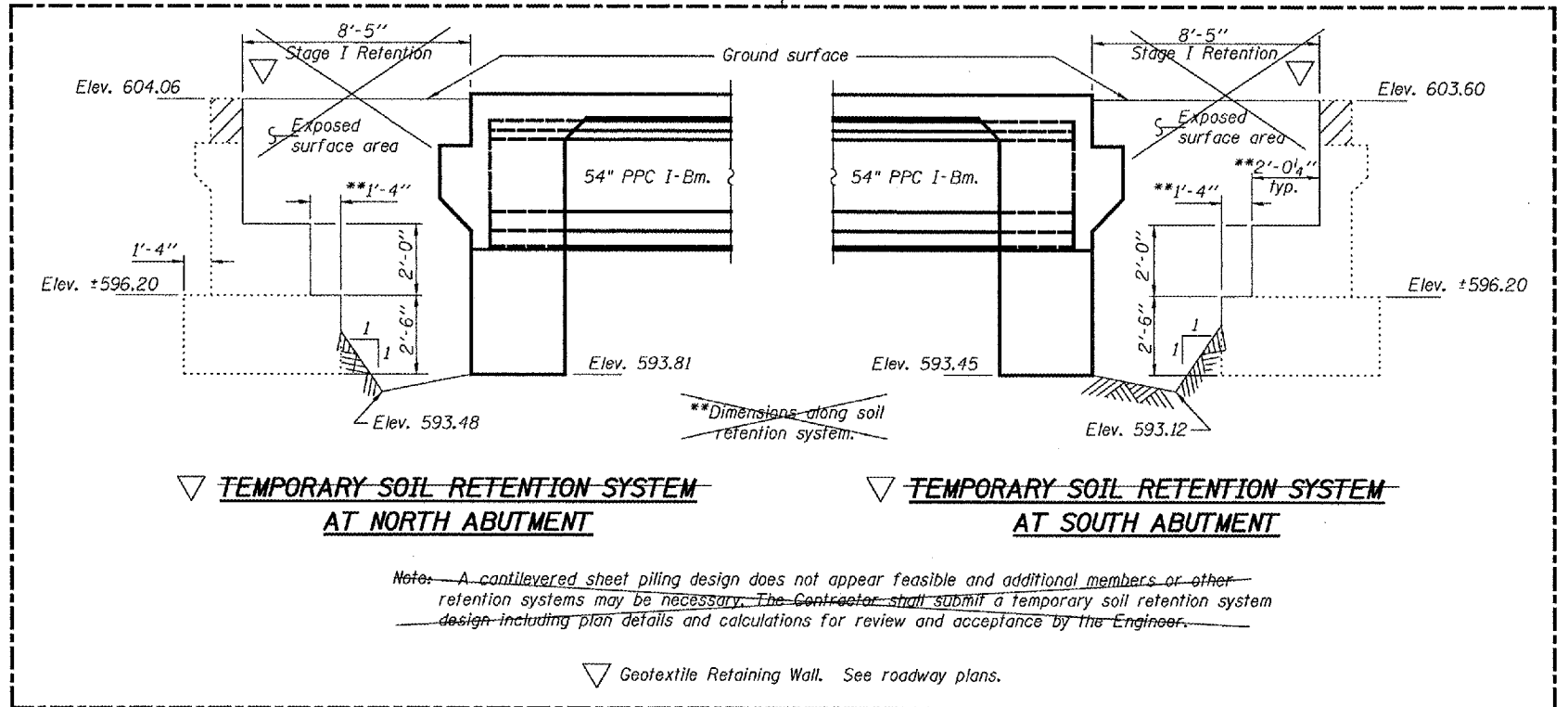
STAGE II CONSTRUCTION

***Stage removal lines shown are for Superstructure and Abutments. Stage removal lines for existing piers are different. See sheet 3 of 20.
***Deck stage construction line is shown. Stage construction line for diaphragms and abutments is different. See sheet 9 of 20.

Notes: Hatched area indicates Removal of Existing Structures.
For quantity of Temporary Concrete Barrier, see Roadway Plans.
All staging cross sections are looking south.

DESIGNED	DPN
CHECKED	AJB
DRAWN	h.f. duong
CHECKED	AJB/DPN

EXAMINED *Thomas J. Demagalli*
PASSED *Ralph E. Anderson*
ENGINEER OF BRIDGES AND STRUCTURES

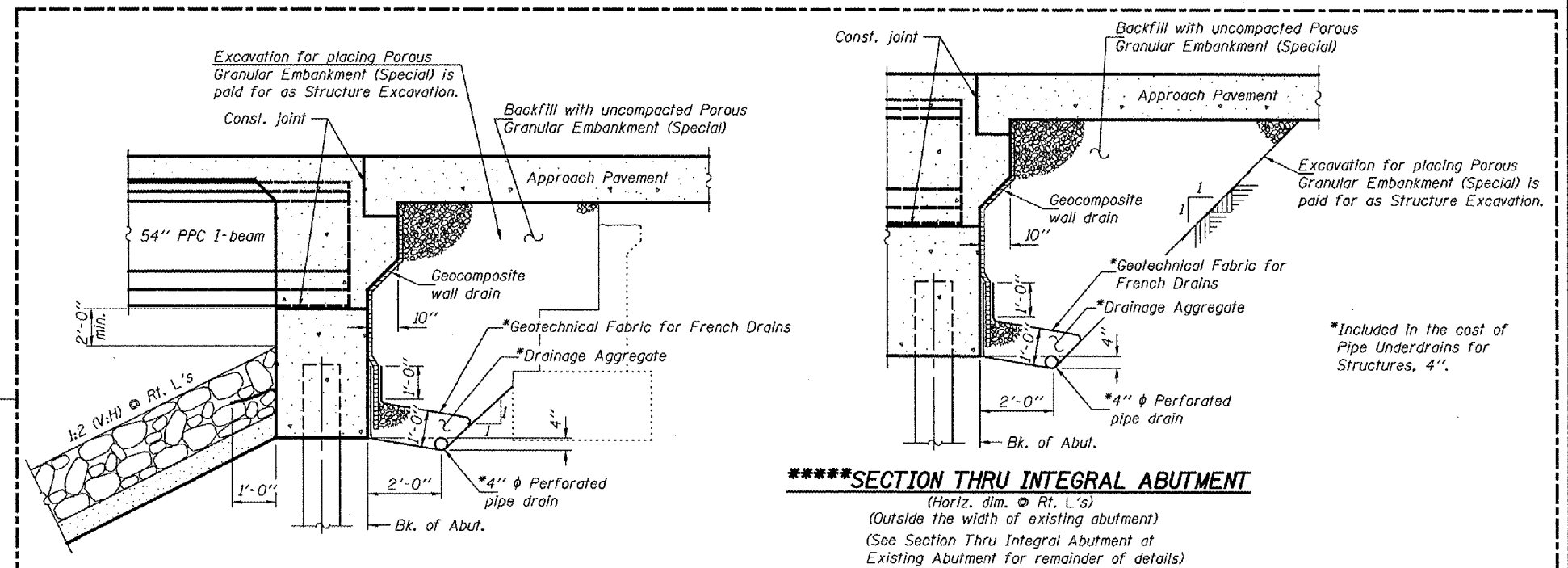


TEMPORARY SOIL RETENTION SYSTEM AT NORTH ABUTMENT

TEMPORARY SOIL RETENTION SYSTEM AT SOUTH ABUTMENT

Note: A cantilevered sheet piling design does not appear feasible and additional members or other retention systems may be necessary. The Contractor shall submit a temporary soil retention system design including plan details and calculations for review and acceptance by the Engineer.

Geotextile Retaining Wall. See roadway plans.



SECTION THRU INTEGRAL ABUTMENT AT EXISTING ABUTMENT

SECTION THRU INTEGRAL ABUTMENT

****All drainage system components shall extend to 2'-0" from the end of each wingwall except an outlet pipe shall extend until intersecting with the side slopes. The pipes shall drain into concrete headwalls. (See Article 601.05 of the Std. Spec's. and Highway Standard 601101).

(Horiz. dim. @ Rt. L's)
(Outside the width of existing abutment)
(See Section Thru Integral Abutment at Existing Abutment for remainder of details)

STAGE CONSTRUCTION DETAILS
F.A.P. RT. 662 SECTION (V,T)B-2
MACOUPIN COUNTY
STATION 447+03.80
STRUCTURE NO. 059-0504