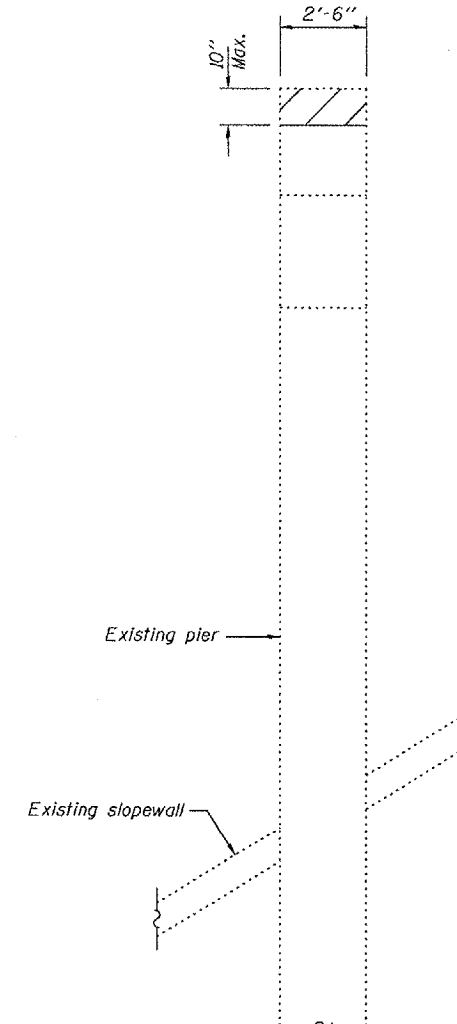
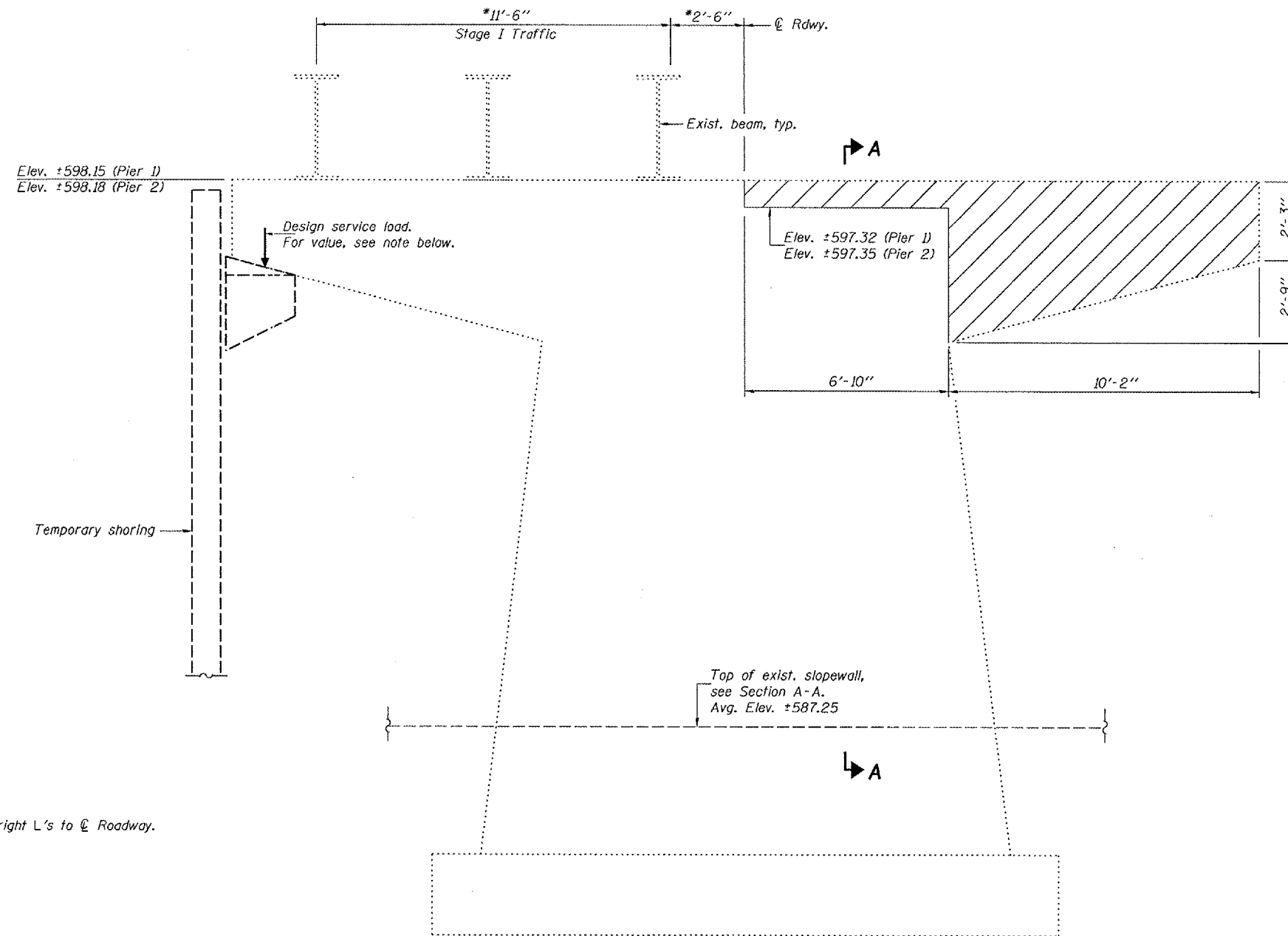



STATE OF ILLINOIS
DEPARTMENT OF TRANSPORTATION

ROUTE NO.	SECTION	COUNTY	SHEET NO.	SHEET	SHEET NO. 3 20 SHEETS
FAP 662	(V,T)B-2	MACOUPIN	68	34	
FED. ROAD DIST. NO. 7	ILLINOIS	FED. AID PROJECT	Contract #72993		



SECTION A-A

ELEVATION - EXISTING PIERS 1 & 2
(Looking south - Pier 1 shown; Pier 2 similar)

 Hatched area indicates the maximum portion of the existing pier that may be removed during Stage I Removal to allow Stage I Construction. Remaining portions of the existing pier that are to be removed shall be removed during Stage II Removal. Cost included with Removal of Existing Structures.

Notes: The existing piers shall be shored as shown on this sheet prior to beginning Stage I Removal. The temporary shoring shall remain in place until Stage Traffic has been moved to the Stage I Construction location. See Special Provision. (See sheet 2 of 20 for Stage Construction Details.)
Temporary shoring shall not be supported on any part of the pier, its footing or the existing slopewall.
Design service load at support contact as shown is 125 kips.

DESIGNED	DPN
CHECKED	AJB
DRAWN	h.f. duong
CHECKED	AJB/DPN

Jan 23, 2007
EXAMINED *Thomas J. Demas*
PASSED *Ronald L. Anderson*
ENGINEER OF BRIDGES AND STRUCTURES

BILL OF MATERIAL

Item	Unit	Total
Temporary Shoring	Each	2

**TEMPORARY SHORING DETAILS
AT EXISTING PIERS
F.A.P. RT. 662 SECTION (V,T)B-2
MACOUPIN COUNTY
STATION 447+03.80
STRUCTURE NO. 059-0504**