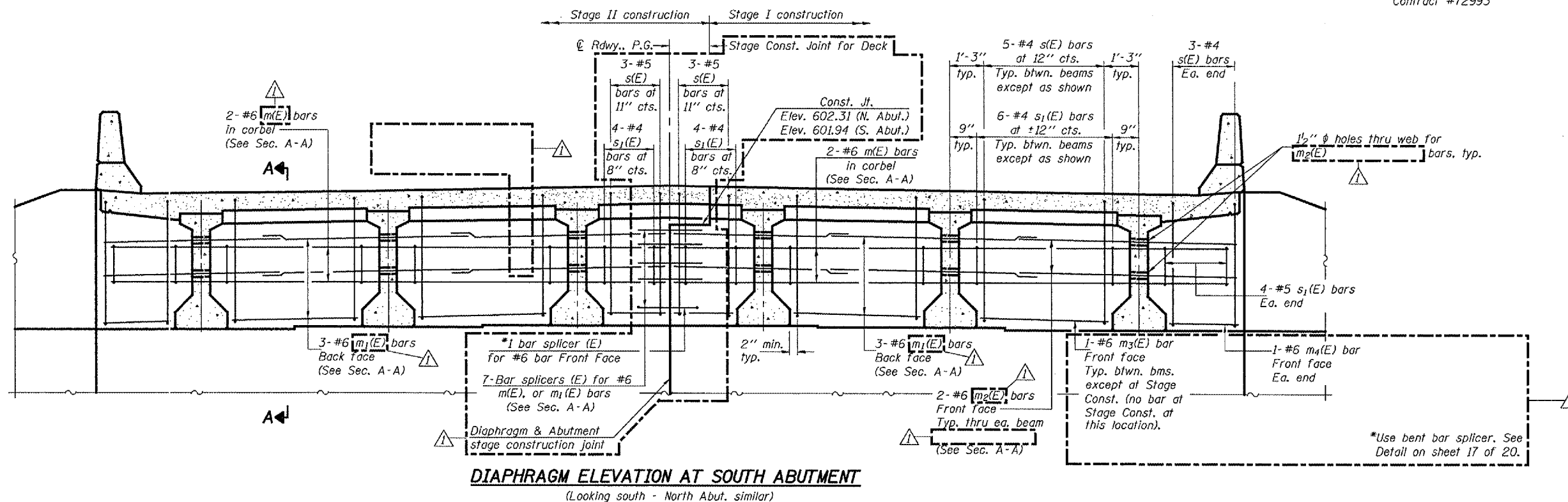


STATE OF ILLINOIS  
DEPARTMENT OF TRANSPORTATION

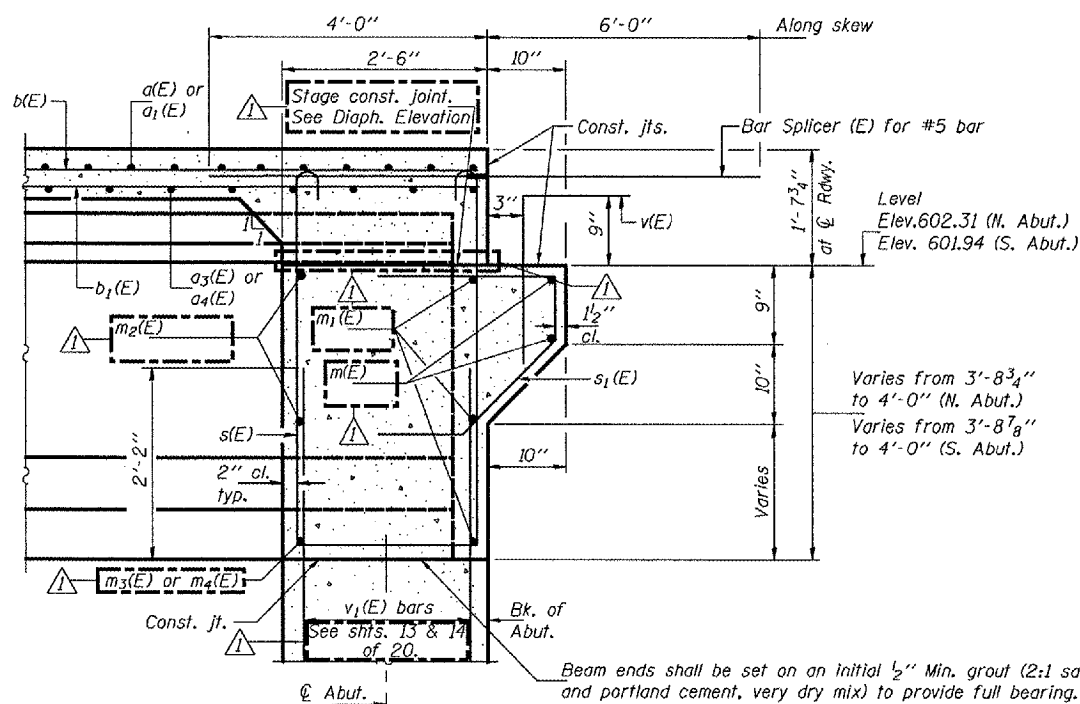
ROUTE NO.	SECTION	COUNTY	DATE	SHEET	SHEET NO. 9 20 SHEETS
FAP 662	(V,T)B-2	MACOUPIN	68	40	
FED. ROAD DIST. NO. 7	BLVD. NO.	FED. AID PROJECT			

Contract #72993



**DIAPHRAGM ELEVATION AT SOUTH ABUTMENT**  
(Looking south - North Abut. similar)

Notes: Reinforcement bars in diaphragm are billed with superstructure on sheet 8 of 20.  
Concrete in diaphragm is included with concrete superstructure on sheet 8 of 20.  
For details of bar splicers, see sheet 17 of 20.  
For details of bars s(E) and s<sub>1</sub>(E) see sheet 8 of 20.  
The s(E) and s<sub>1</sub>(E) bars shall be placed parallel to the beams. Spacing for these bars shall be at right angles to the beams.



**SECTION A-A**  
Dimensions are at right L's to abutments, except as shown.

**MIN. BAR LAPS**  
#6 bars = 2'-9"

Beam ends shall be set on an initial 1/2" Min. grout (2:1 sand and portland cement, very dry mix) to provide full bearing. Any excess grout squeezed out from under the beam shall be removed. Cost included with Concrete Structures.

DESIGNED	DPN
CHECKED	AJB
DRAWN	h.f. duong
CHECKED	FT/AJB/DPN

Jan 23, 2007  
EXAMINED *Thomas J. Demagala*  
PASSED *Ralph E. Anderson*  
ENGINEER OF BRIDGES AND STRUCTURES

**DIAPHRAGM DETAILS**  
**F.A.P. RT. 662 SECTION (V,T)B-2**  
**MACOUPIN COUNTY**  
**STATION 447+03.80**  
**STRUCTURE NO. 059-0504**