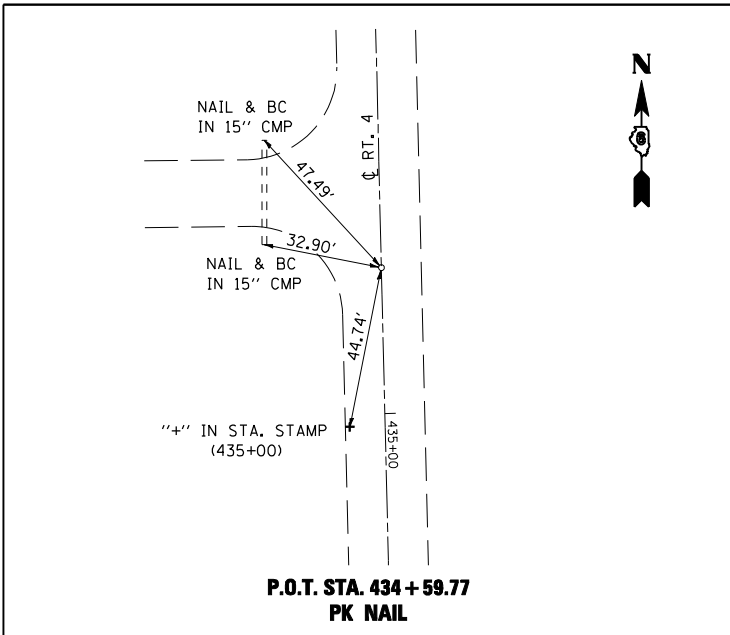
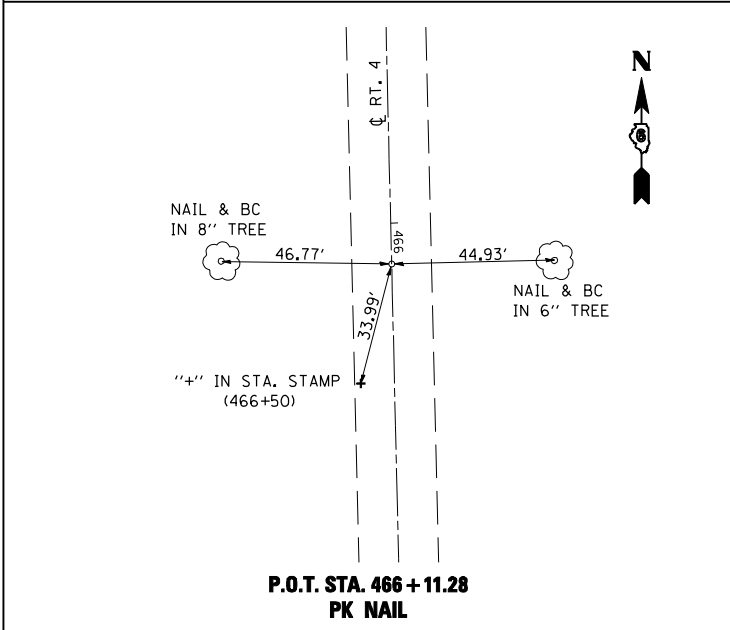
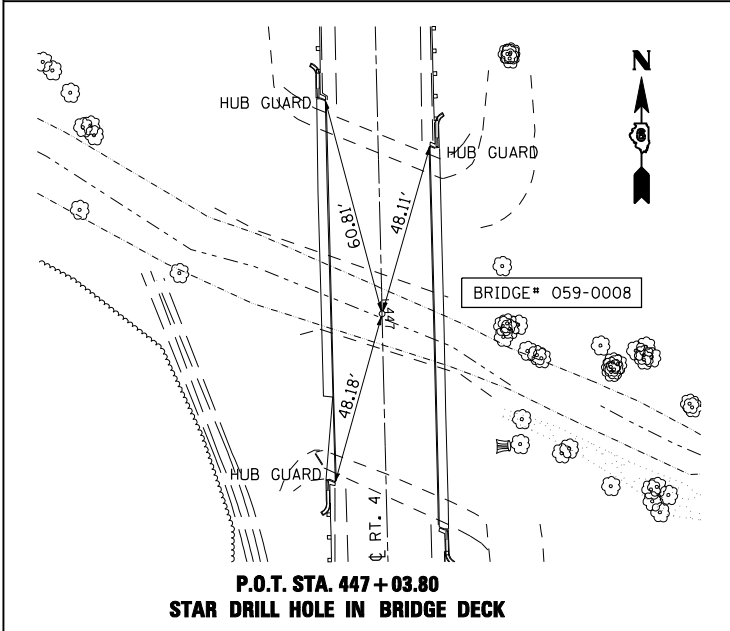


F.A.P. RTE.	SECTION	COUNTY	TOTAL SHEETS	SHEET NO.
662	*	MACOUPIN	68	12
STA.		TO STA.		
FED. ROAD DIST. NO.	ILLINOIS	FED. AID PROJECT		
• (V,T) B-2				



BM #20A : TO REACH FROM INTERSECTION OF DEERFIELD RD. & OLD IL RTE 4,
 PROCEED SOUTH 507' TO BRIDGE 059-0008 OVER HONEY CREEK,
 BENCH IS LOCATED ON S.W. CORNER OF HUB GUARD.
 STA. 447+50.11, 15.2' RT.
 ELEV. = 602.96



REVISIONS	
NAME	DATE

ILLINOIS DEPARTMENT OF TRANSPORTATION

BENCHMARKS & CROSS TIES

SCALE: VERT. DRAWN BY
 HORIZ. CHECKED BY
 DATE

ct:\projects\0652002\05\h\ta\ign\lay\out.dgn
 3/13/2007
 +REF01