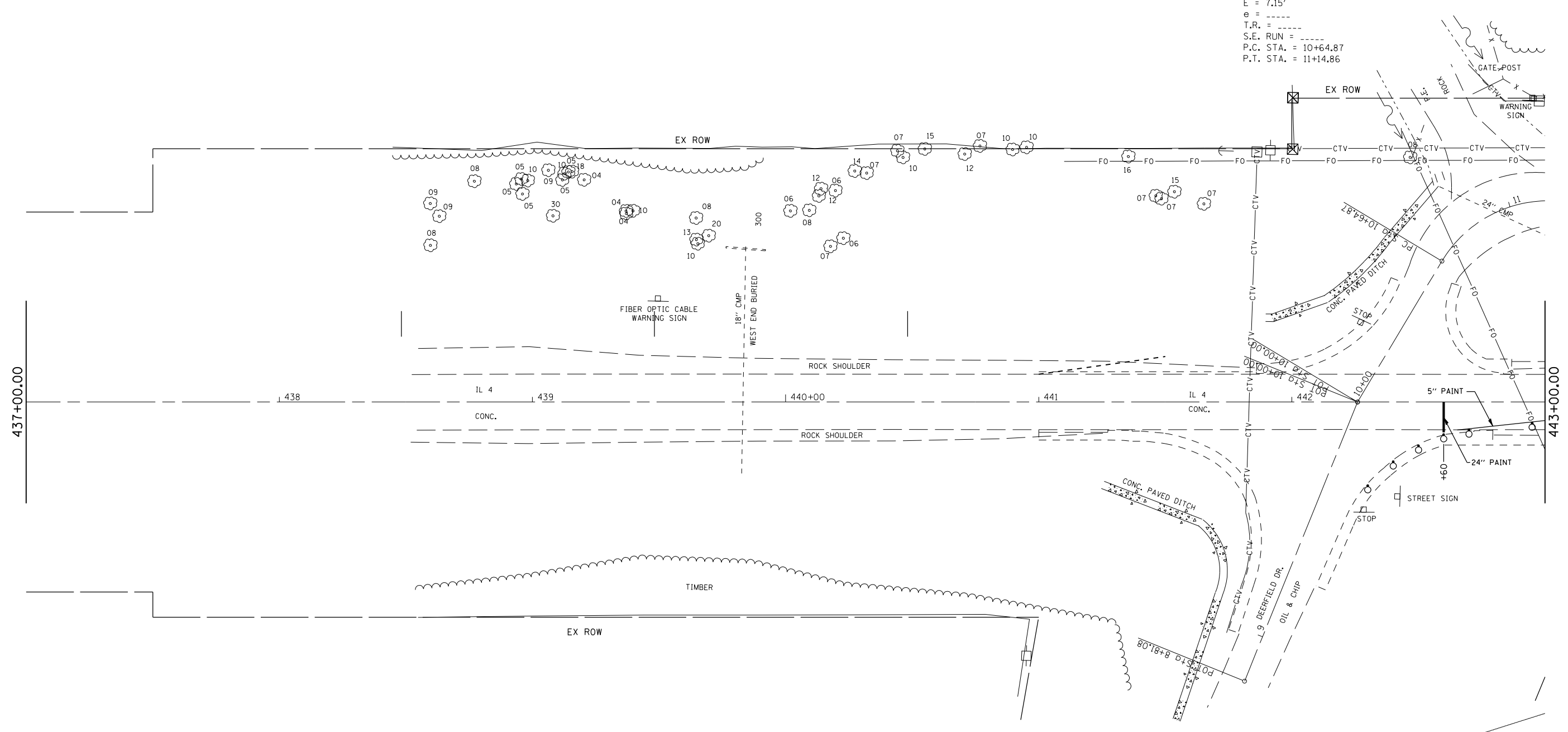


F.A. RTE.	SECTION	COUNTY	TOTAL SHEETS	SHEET NO.
662		MACOUPIN	68	13
STA.		TO STA.		
FED. ROAD DIST. NO.	ILLINOIS	FED. AID PROJECT		

EXIST. CURVE 5144  
 PI STA. = 10+92.29  
 $\Delta = 58^\circ 27' 58''$  (RT)  
 $D = 116^\circ 56' 44''$   
 $R = 48.99'$   
 $T = 27.42'$   
 $L = 49.99'$   
 $E = 7.15'$   
 $e = \text{-----}$   
 $T.R. = \text{-----}$   
 $S.E. \text{ RUN} = \text{-----}$   
 $P.C. \text{ STA.} = 10+64.87$   
 $P.T. \text{ STA.} = 11+14.86$

• (V,T) B-2



PAVEMENT MARKING, TEMPORARY PAVEMENT MARKING REMOVAL, AND VERTICAL PANELS INCLUDED IN COST OF STD 701321  
 REMOVAL OF EXISTING PAVEMENT MARKING TO BE PAID AS PAVEMENT MARKING REMOVAL

REVISIONS	
NAME	DATE

ILLINOIS DEPARTMENT OF TRANSPORTATION  
**STAGE 1**  
**PLAN VIEW**  
 SCALE: VERT. / HORIZ.  
 DATE: / /  
 DRAWN BY: BOK  
 CHECKED BY: JCN

PLOT DATE = 3/13/2007  
 FILE NAME = c:\projects\662993\shots\stage1.dgn  
 PLOT SCALE = 42.3525' / IN.  
 REFERENCE = #REF#