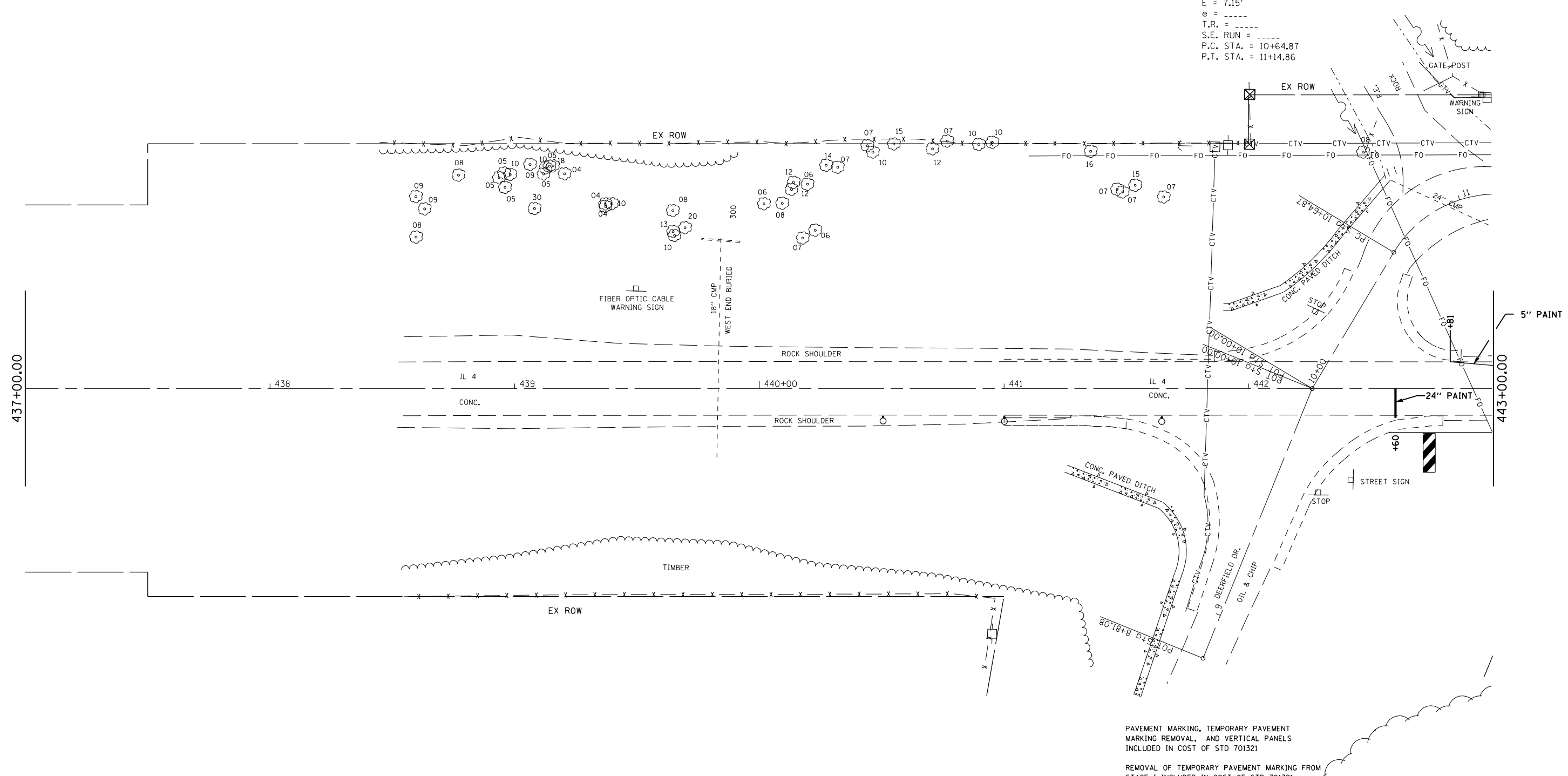


F.A. RTE.	SECTION	COUNTY	TOTAL SHEETS	SHEET NO.
662		MACOUPIN	68	16
STA.		TO STA.		
FED. ROAD DIST. NO.	ILLINOIS	FED. AID PROJECT		

EXIST. CURVE 5144
 PI STA. = 10+92.29
 $\Delta = 58^\circ 27' 58''$ (RT)
 $D = 116^\circ 56' 44''$
 $R = 48.99'$
 $T = 27.42'$
 $L = 49.99'$
 $E = 7.15'$
 $e = \text{-----}$
 $T.R. = \text{-----}$
 $S.E. \text{ RUN} = \text{-----}$
 $P.C. \text{ STA.} = 10+64.87$
 $P.T. \text{ STA.} = 11+14.86$

• (V,T)B-2



PAVEMENT MARKING, TEMPORARY PAVEMENT MARKING REMOVAL, AND VERTICAL PANELS INCLUDED IN COST OF STD 701321

REMOVAL OF TEMPORARY PAVEMENT MARKING FROM STAGE I INCLUDED IN COST OF STD 701321

REVISIONS	
NAME	DATE

ILLINOIS DEPARTMENT OF TRANSPORTATION

STAGE 2
PLAN VIEW

SCALE: VERT. _____
HORIZ. _____

DATE _____

DRAWN BY _____
CHECKED BY _____

PLOT DATE = 3/13/2007
 FILE NAME = c:\projects\662993\shs\stage2.dgn
 PLOT SCALE = 42.353' / IN.
 REFERENCE = #REF#