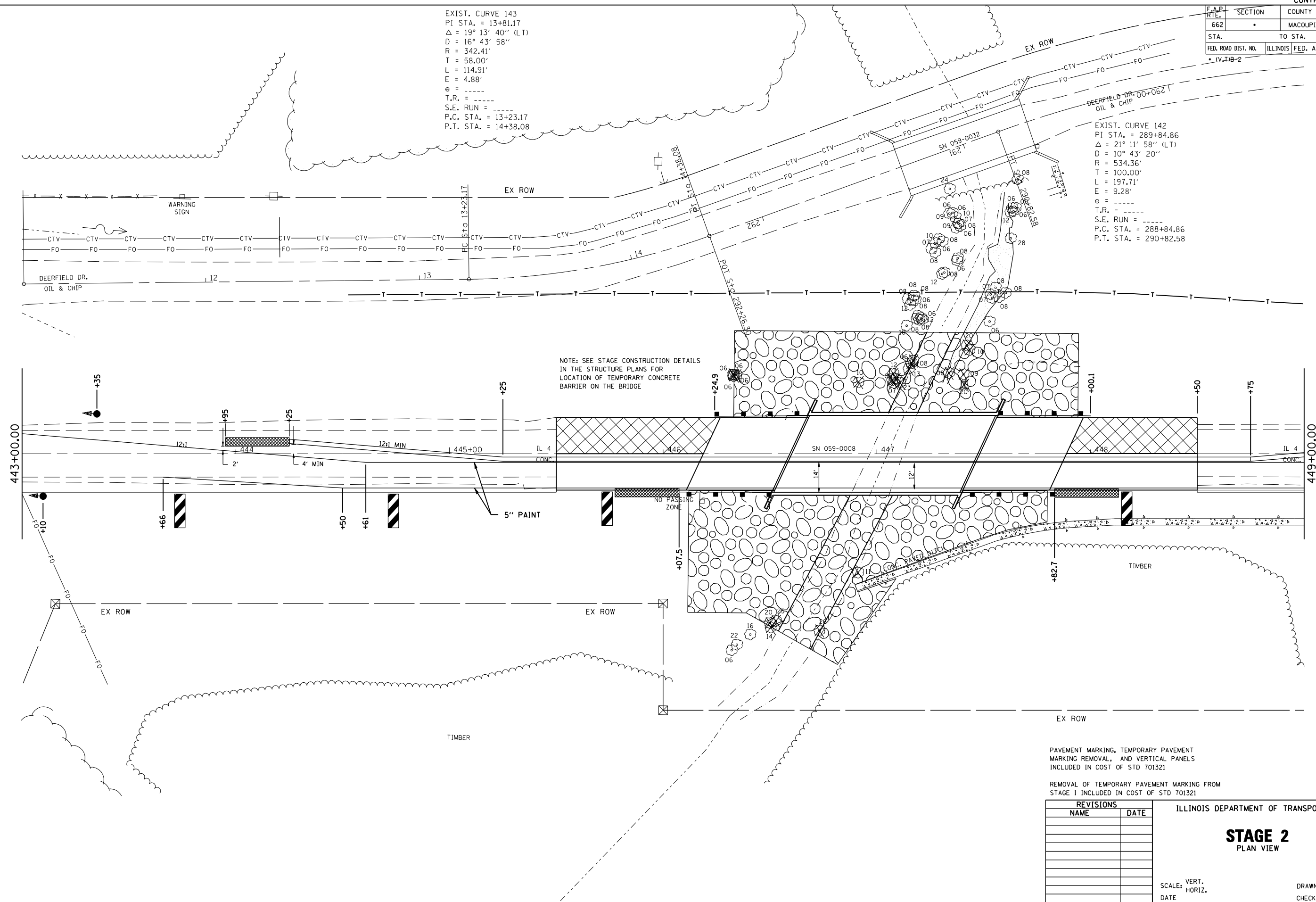


F.A.P. RTE.	SECTION	COUNTY	TOTAL SHEETS	SHEET NO.
662		MACOUPIN	68	17
STA.		TO STA.		
FED. ROAD DIST. NO.		ILLINOIS	FED. AID PROJECT	

EXIST. CURVE 143  
 PI STA. = 13+81.17  
 $\Delta = 19^\circ 13' 40''$  (LT)  
 $D = 16^\circ 43' 58''$   
 $R = 342.41'$   
 $T = 58.00'$   
 $L = 114.91'$   
 $E = 4.88'$   
 $e =$   
 $T.R. =$   
 $S.E. RUN =$   
 $P.C. STA. = 13+23.17$   
 $P.T. STA. = 14+38.08$

EXIST. CURVE 142  
 PI STA. = 289+84.86  
 $\Delta = 21^\circ 11' 58''$  (LT)  
 $D = 10^\circ 43' 20''$   
 $R = 534.36'$   
 $T = 100.00'$   
 $L = 197.71'$   
 $E = 9.28'$   
 $e =$   
 $T.R. =$   
 $S.E. RUN =$   
 $P.C. STA. = 288+84.86$   
 $P.T. STA. = 290+82.58$



NOTE: SEE STAGE CONSTRUCTION DETAILS IN THE STRUCTURE PLANS FOR LOCATION OF TEMPORARY CONCRETE BARRIER ON THE BRIDGE

PAVEMENT MARKING, TEMPORARY PAVEMENT MARKING REMOVAL, AND VERTICAL PANELS INCLUDED IN COST OF STD 701321  
 REMOVAL OF TEMPORARY PAVEMENT MARKING FROM STAGE I INCLUDED IN COST OF STD 701321

REVISIONS	
NAME	DATE

ILLINOIS DEPARTMENT OF TRANSPORTATION  
**STAGE 2**  
 PLAN VIEW  
 SCALE: VERT. / HORIZ.  
 DATE  
 DRAWN BY / CHECKED BY

PLOT DATE = 3/13/2007  
 FILE NAME = c:\projects\662993\stage2.dgn  
 PLOT SCALE = 42.353 1/1 IN.  
 REFERENCE = #REF#