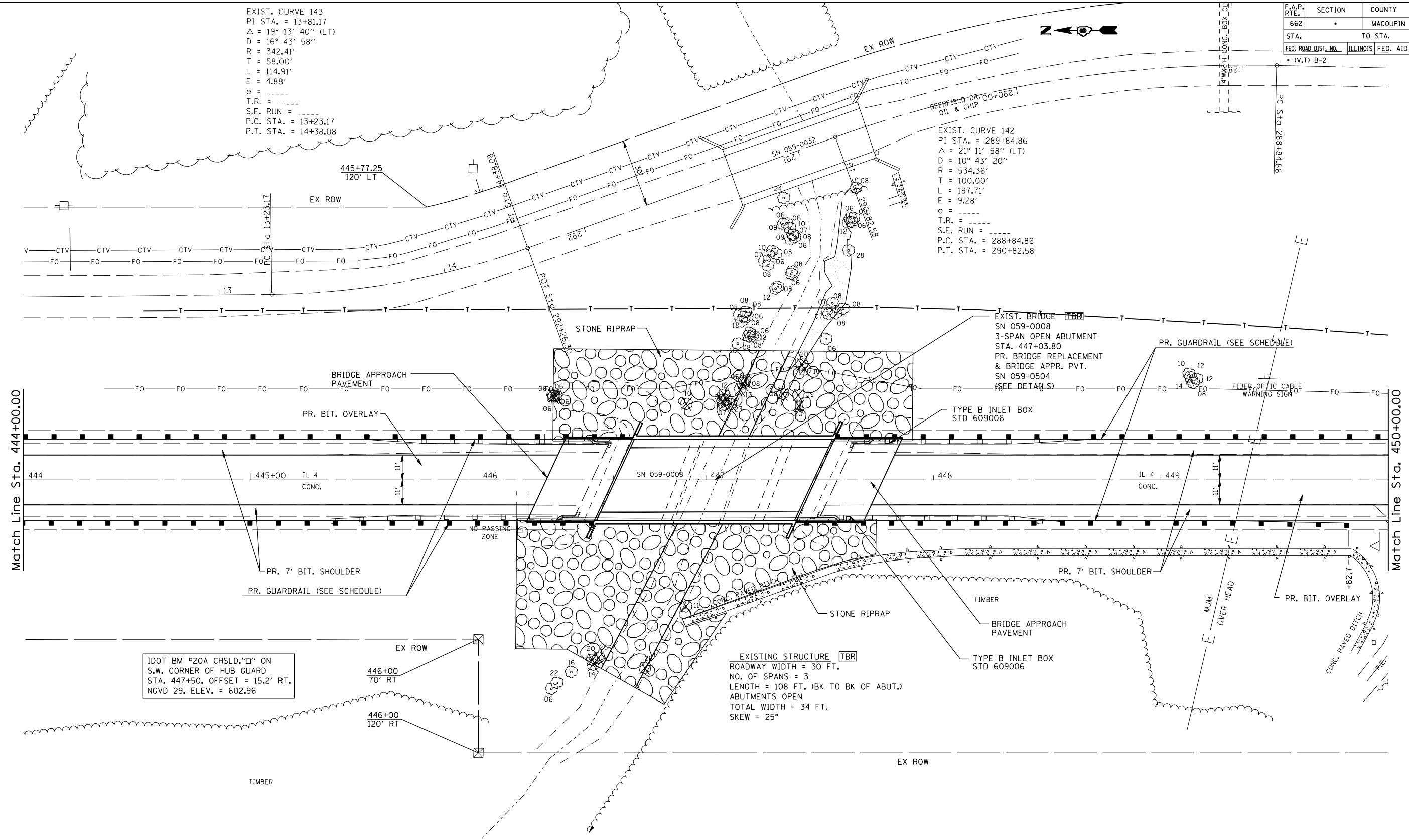


F.A.P. RTE.	SECTION	COUNTY	TOTAL SHEETS	SHEET NO.
662		MACOUPIN	68	22
STA. TO STA.		ILLINOIS FED. AID PROJECT		
(V,T) B-2				

EXIST. CURVE 143
 PI STA. = 13+81.17
 $\Delta = 19^\circ 13' 40''$ (LT)
 $D = 16^\circ 43' 58''$
 $R = 342.41'$
 $T = 58.00'$
 $L = 114.91'$
 $E = 4.88'$
 $e = \text{-----}$
 $T.R. = \text{-----}$
 $S.E. RUN = \text{-----}$
 $P.C. STA. = 13+23.17$
 $P.T. STA. = 14+38.08$

EXIST. CURVE 142
 PI STA. = 289+84.86
 $\Delta = 21^\circ 11' 58''$ (LT)
 $D = 10^\circ 43' 20''$
 $R = 534.36'$
 $T = 100.00'$
 $L = 197.71'$
 $E = 9.28'$
 $e = \text{-----}$
 $T.R. = \text{-----}$
 $S.E. RUN = \text{-----}$
 $P.C. STA. = 288+84.86$
 $P.T. STA. = 290+82.58$



IDOT BM *20A CHSLD. "C" ON S.W. CORNER OF HUB GUARD STA. 447+50, OFFSET = 15.2' RT. NGVD 29, ELEV. = 602.96

EXISTING STRUCTURE [TBR]
 ROADWAY WIDTH = 30 FT.
 NO. OF SPANS = 3
 LENGTH = 108 FT. (BK TO BK OF ABUT.)
 ABUTMENTS OPEN
 TOTAL WIDTH = 34 FT.
 SKEW = 25°

REVISIONS	
NAME	DATE

ILLINOIS DEPARTMENT OF TRANSPORTATION
 PLAN VIEW
 FAP 662 (IL 4)
 SECTION (V,T) B-2
 MACOUPIN COUNTY
 SCALE: VERT. _____
 DATE _____ HORIZ. _____
 DRAWN BY _____
 CHECKED BY _____

PLOT DATE = 3/13/2007
 FILE NAME = c:\projects\652685\shplan.dgn
 PLOT SCALE = 4.23525 / IN.
 USER NAME = laughlin-1