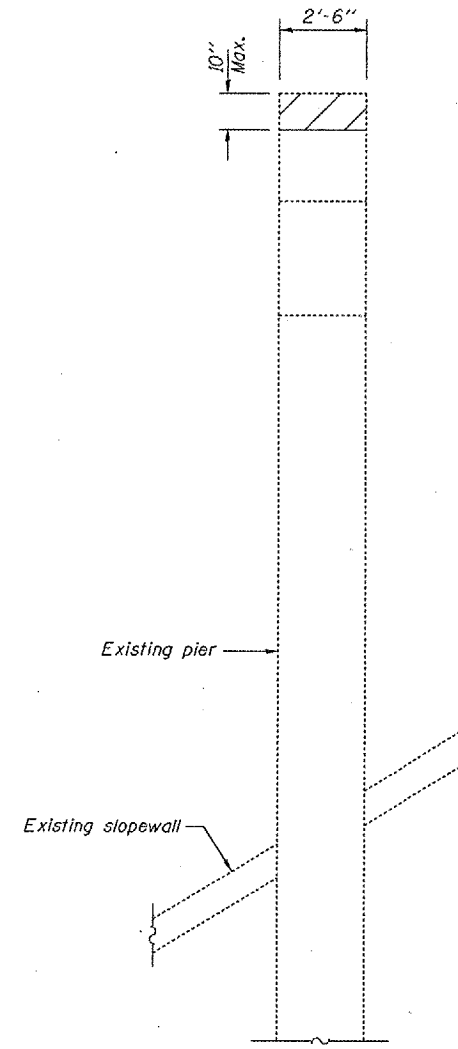
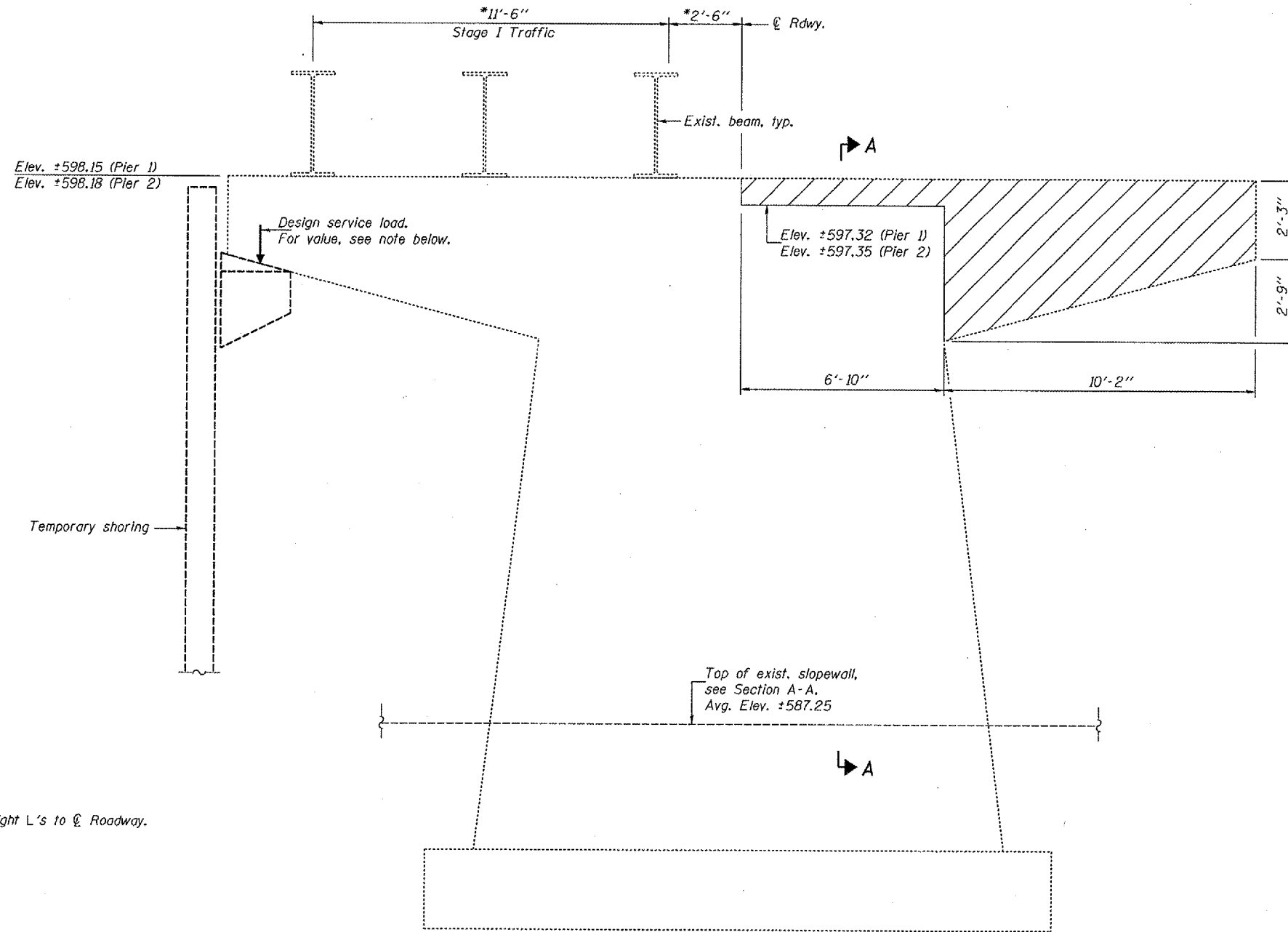


STATE OF ILLINOIS  
DEPARTMENT OF TRANSPORTATION

ROUTE NO.	SECTION	COUNTY	FEET SHEETS	SHEET NO.	SHEET NO. 3
FAP 662	(V,T)B-2	MACOUPIN	68	34	20 SHEETS
FED. ROAD DIST. NO. 7	ILLINOIS	FED. AID PROJECT			

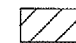
Contract #72993



SECTION A-A

\* Dimensions at right L's to  $\text{\textcircled{C}}$  Roadway.

ELEVATION - EXISTING PIERS 1 & 2  
(Looking south - Pier 1 shown; Pier 2 similar)

 Hatched area indicates the maximum portion of the existing pier that may be removed during Stage I Removal to allow Stage I Construction. Remaining portions of the existing pier that are to be removed shall be removed during Stage II Removal. Cost included with Removal of Existing Structures.

- Notes:
- The existing piers shall be shored as shown on this sheet prior to beginning Stage I Removal. The temporary shoring shall remain in place until Stage Traffic has been moved to the Stage I Construction location. See Special Provision. (See sheet 2 of 20 for Stage Construction Details.)
  - Temporary shoring shall not be supported on any part of the pier, its footing or the existing slopewall.
  - Design service load at support contact as shown is 125 kips.

BILL OF MATERIAL

Item	Unit	Total
Temporary Shoring	Each	2

DESIGNED	DPN
CHECKED	AJB
DRAWN	h.t. duong
CHECKED	AJB/DPN

Jan 23, 2007  
EXAMINED *Thomas J. Romagnolo*  
ENGINEER OF BRIDGE DESIGN  
PASSED *Ronald E. Anderson*  
ENGINEER OF BRIDGES AND STRUCTURES

TEMPORARY SHORING DETAILS  
AT EXISTING PIERS  
F.A.P. RT. 662 SECTION (V,T)B-2  
MACOUPIN COUNTY  
STATION 447+03.80  
STRUCTURE NO. 059-0504