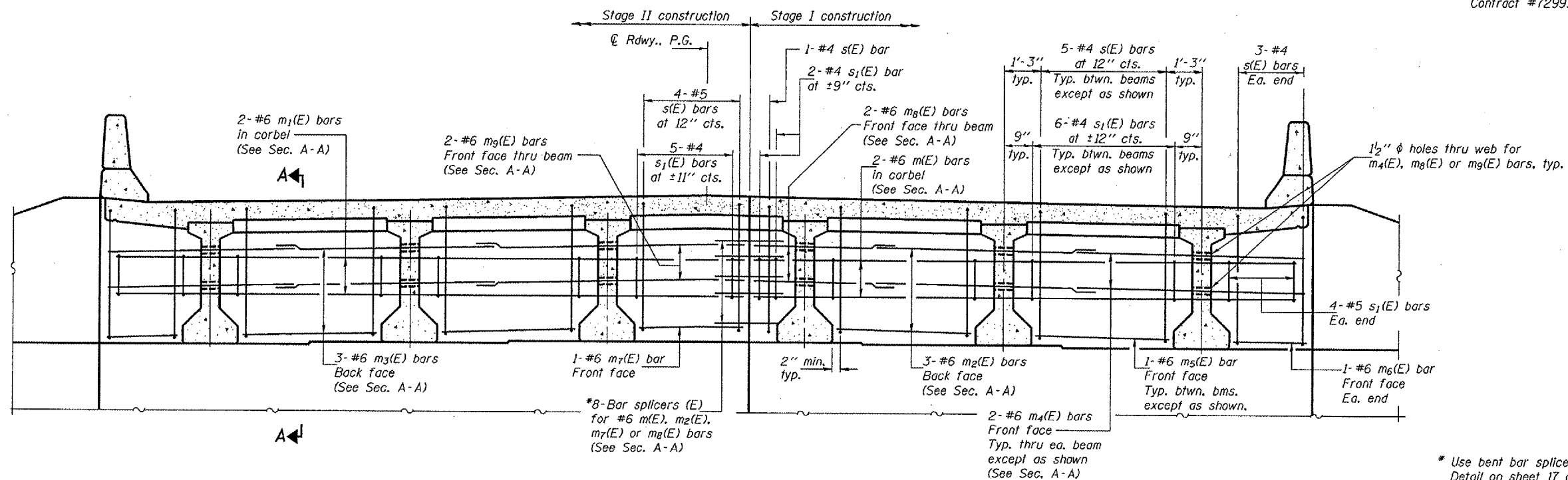


STATE OF ILLINOIS  
DEPARTMENT OF TRANSPORTATION

ROUTE NO.	SECTION	COUNTY	TOTAL SHEETS	SHEET NO.	SHEET NO. 9
FAP 662	(V,T)B-2	MACOUPIN	68	40	20 SHEETS
FED. ROAD DIST. NO. 7	ILLINOIS	FED. AID PROJECT			

Contract #72993

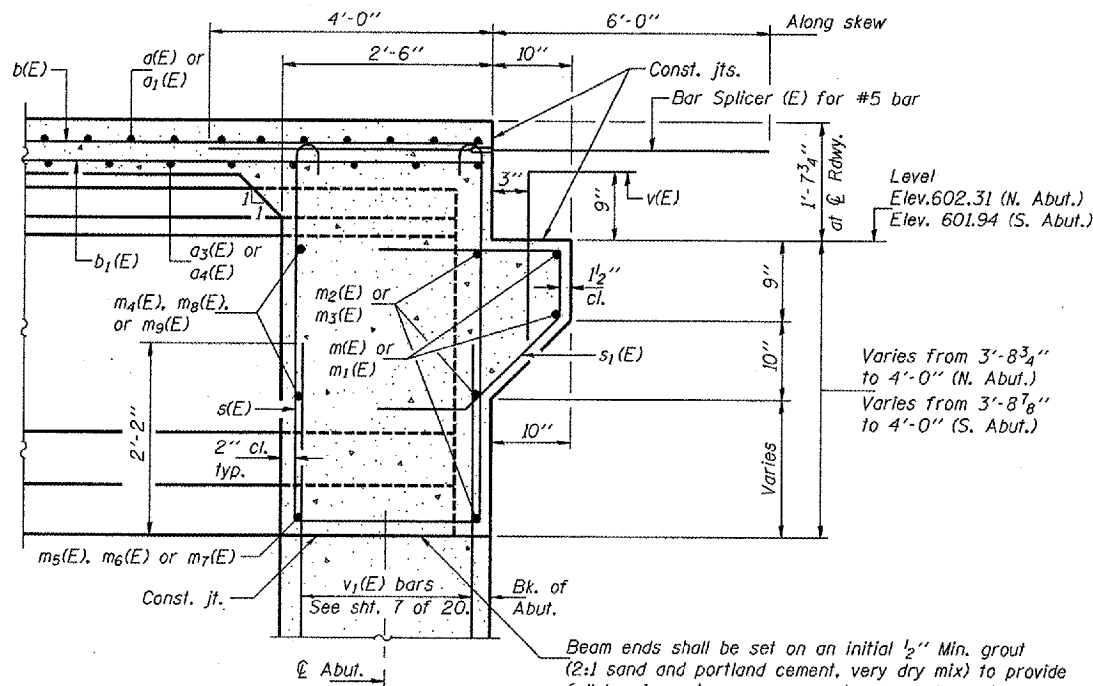


**DIAPHRAGM ELEVATION AT SOUTH ABUTMENT**

(Looking south - North Abut. similar)

\* Use bent bar splicers in front face.  
Detail on sheet 17 of 20.

- Notes:
- Reinforcement bars in diaphragm are billed with superstructure on sheet 8 of 20.
  - Concrete in diaphragm is included with concrete superstructure on sheet 8 of 20.
  - For details of bar splicers, see sheet 17 of 20.
  - For details of bars s(E) and s<sub>1</sub>(E) see sheet 8 of 20.
  - The s(E) and s<sub>1</sub>(E) bars shall be placed parallel to the beams. Spacing for these bars shall be at right angles to the beams.



**SECTION A-A**

Dimensions are at right L's to abutments, except as shown.

Beam ends shall be set on an initial 1/2" Min. grout (2:1 sand and portland cement, very dry mix) to provide full bearing. Any excess grout squeezed out from under the beam shall be removed. Cost included with Concrete Structures.

**MIN. BAR LAPS**

#6 bars = 2'-9"

DESIGNED	DPN
CHECKED	AJB
DRAWN	h.i. duong
CHECKED	FT/AJB/DPN

Jan 23, 2007  
EXAMINED *Thomas J. Domagala*  
PASSED *Ralph E. Anderson*  
ENGINEER OF BRIDGE DESIGN  
ENGINEER OF BRIDGES AND STRUCTURES

**DIAPHRAGM DETAILS**  
F.A.P. RT. 662 SECTION (V,T)B-2  
MACOUPIN COUNTY  
STATION 447+03.80  
STRUCTURE NO. 059-0504