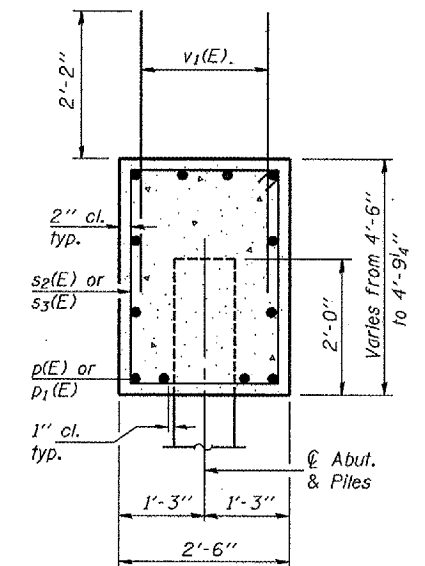
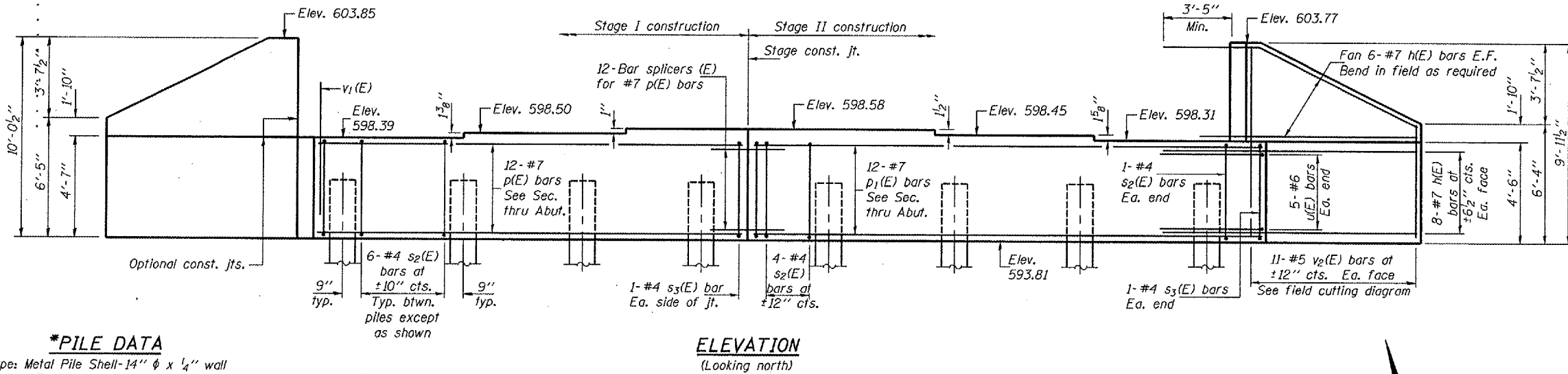


STATE OF ILLINOIS  
DEPARTMENT OF TRANSPORTATION

ROUTE NO.	SECTION	COUNTY	TOTAL SHEETS	SHEET NO.	SHEET NO. 13
FAP 662	(V,T)B-2	MACOUPIN	68	444	20 SHEETS
FED. ROAD DIST. NO. 7	ILLINOIS	FED. AID PROJECT			

Contract #72993

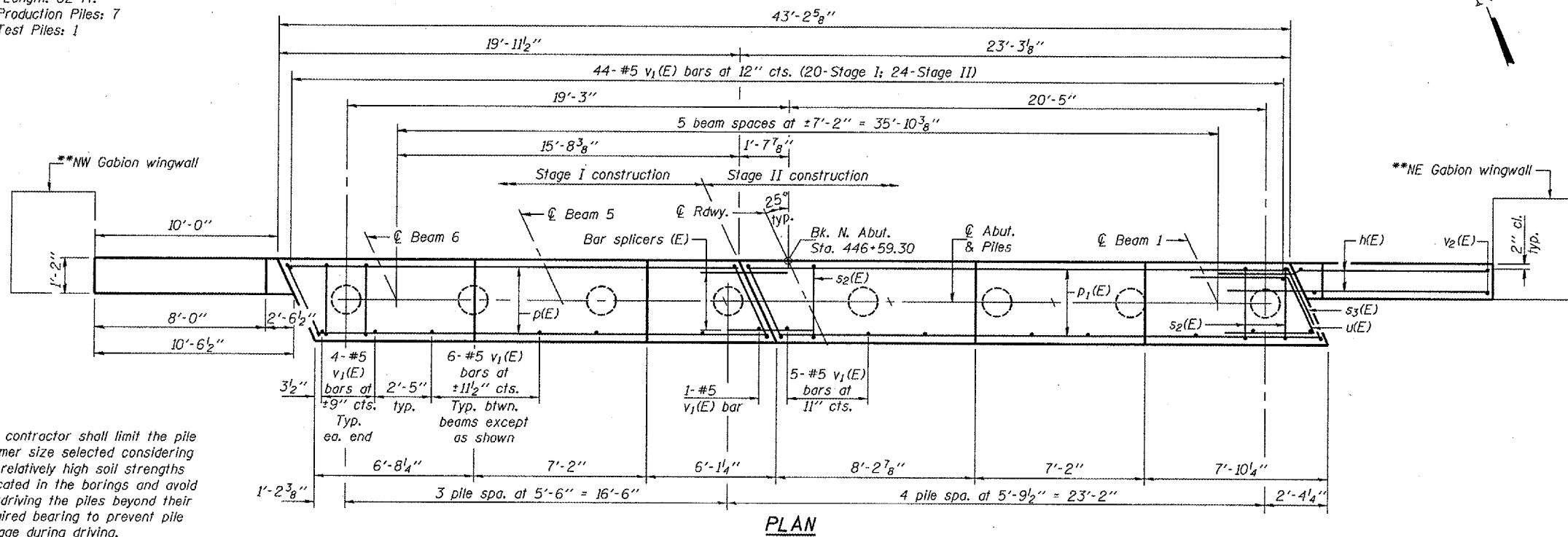
Notes: . Four steps monolithically with cap.  
. For details of bar splicers, see sheet 17 of 20.  
. For details of piles, see sheet 16 of 20.



**\*PILE DATA**

Type: Metal Pile Shell-14"  $\phi$  x 1/4" wall  
Nominal Required Bearing: 398 kips  
Factored Resistance Available: 199 kips  
Est. Length: 62 ft.  
No. Production Piles: 7  
No. Test Piles: 1

**ELEVATION**  
(Looking north)



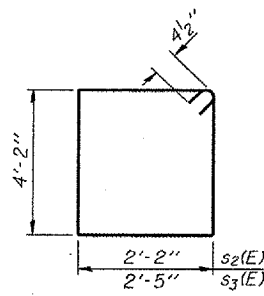
\*The contractor shall limit the pile hammer size selected considering the relatively high soil strengths indicated in the borings and avoid overdriving the piles beyond their required bearing to prevent pile damage during driving.

\*\*For gabion wingwall details, see sheet 15 of 20.

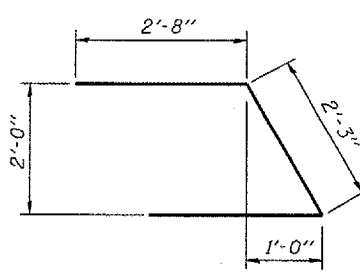
**BILL OF MATERIAL**

Bar	No.	Size	Length	Shape
h(E)	28	#7	14'-0"	
p(E)	12	#7	19'-8"	
p1(E)	12	#7	22'-11"	
s2(E)	42	#4	13'-5"	□
s3(E)	4	#4	13'-11"	□
u(E)	10	#6	7'-7"	┘
v1(E)	82	#5	4'-4"	
v2(E)	22	#5	15'-8"	
Concrete Structures	Cu. Yd.		26.2	
Reinforcement Bars, Epoxy Coated	Pound		3100	
Structure Excavation	Cu. Yd.		106.5	
Furnishing Metal Shell Piles 14"	Foot		434	
Driving Piles	Foot		434	
Test Pile Metal Shells	Each		1	

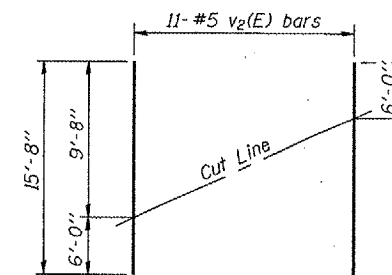
**PLAN**



**BARS s2(E) & s3(E)**



**BAR u(E)**



**FIELD CUTTING DIAGRAM**

Order v2(E) full length. Cut as shown and use remainder of bars in opposite face.

DESIGNED	DPN
CHECKED	AJB
DRAWN	h.t. duong
CHECKED	FT/AJB/DPN

Jan 23, 2007  
EXAMINED *Thomas Romagallo*  
PASSED *Ralph E. Anderson*

**NORTH ABUTMENT**  
**F.A.P. RT. 662 - SECTION (V,T)B-2**  
**MACOUPIN COUNTY**  
**STATION 447+03.80**  
**STRUCTURE NO. 059-0504**