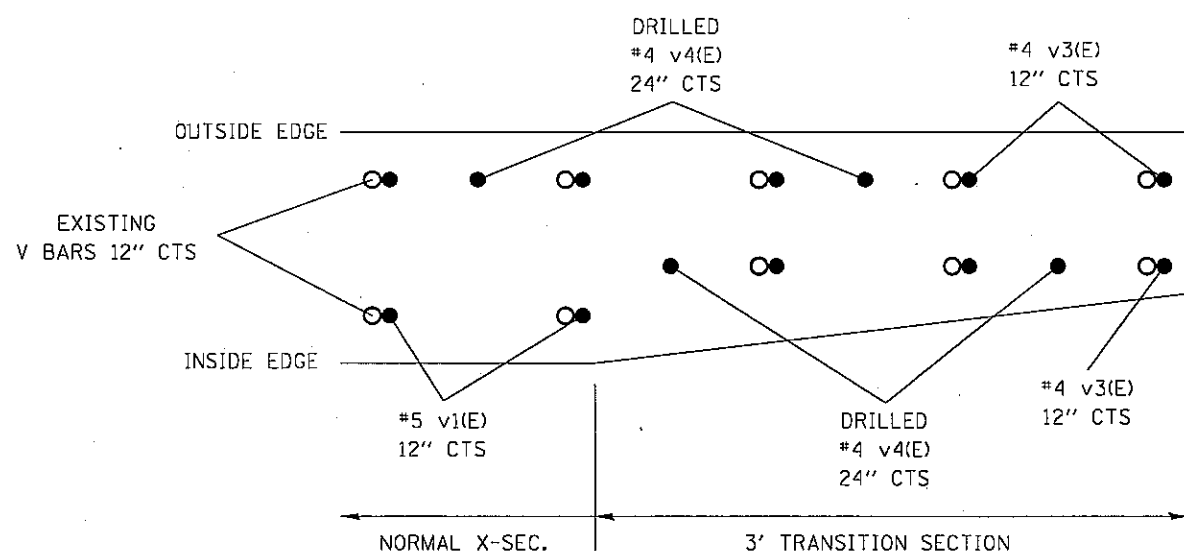
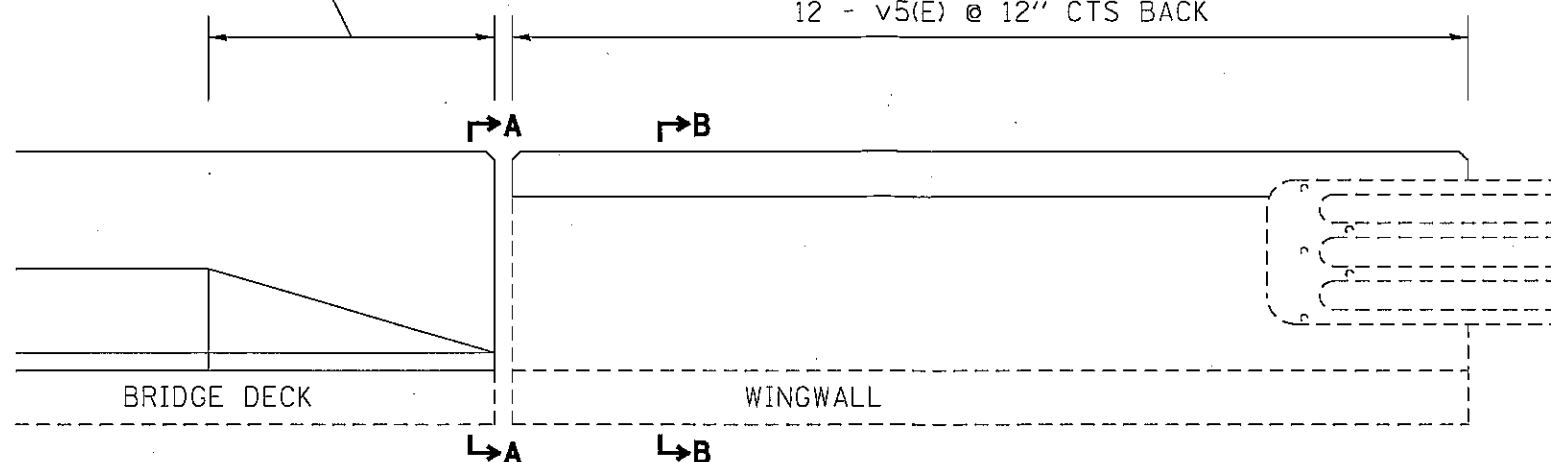


3 - v3(E) @ 12" CTS & 2 - v4(E) @ 24" CTS FRONT  
3 - v3(E) @ 12" CTS & 1 - v4(E) BACK (SEE DETAIL)

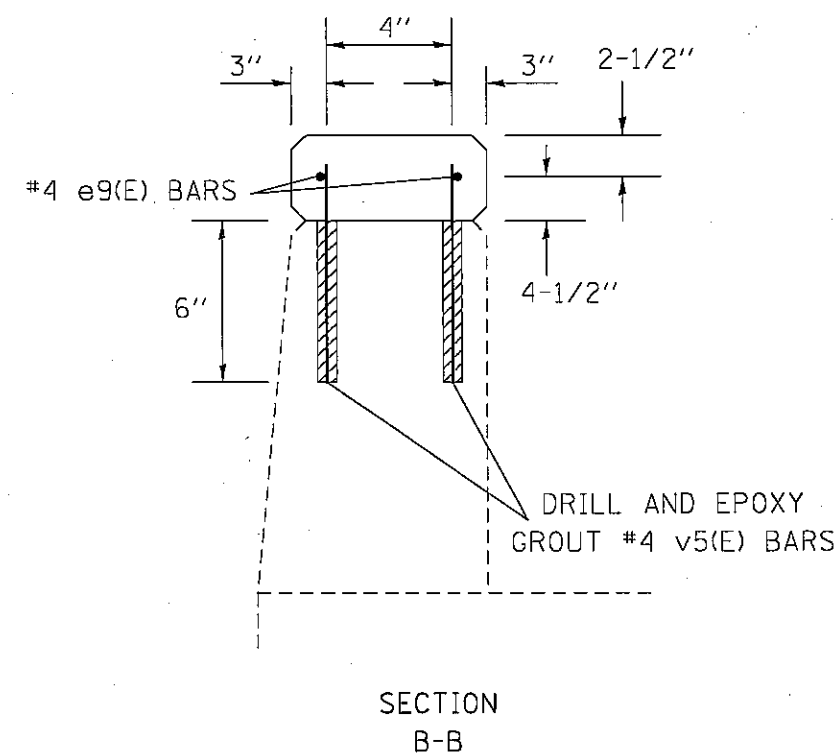
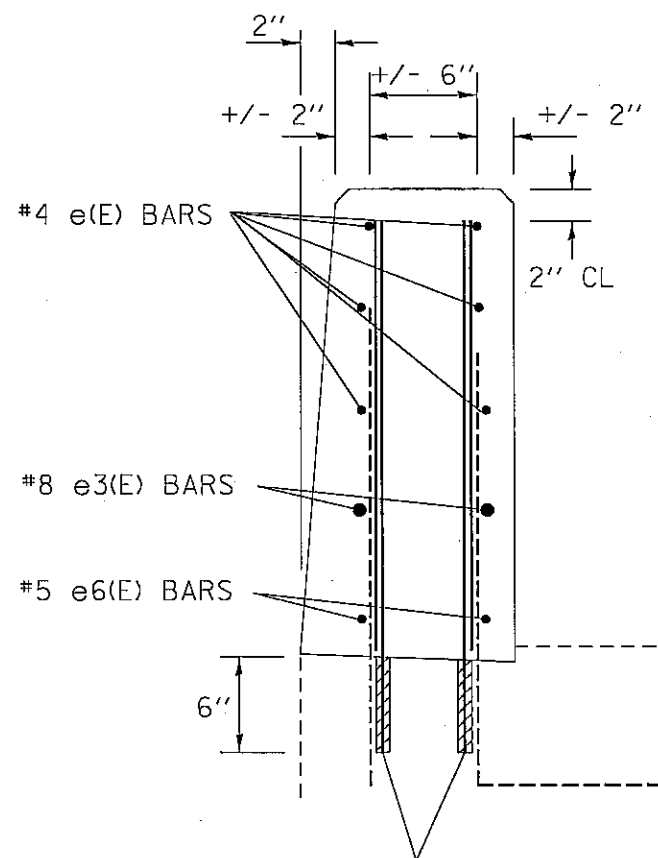
12 - v5(E) @ 12" CTS FRONT  
12 - v5(E) @ 12" CTS BACK

#4 e(E), #8 e3(E),  
AND #5 e6(E) BARS  
AS DETAILED  
ON SHEETS 6 & 7  
(BEND BOTTOM  
BAR 3' FOR  
WALL TAPER)

2 - #4 e9(E) BARS  
AS DETAILED BELOW



PLAN VIEW @ PARAPET BASE  
(VERTICAL BARS ONLY)



NOTES:

v2(E) AND v4(E) BARS SHALL BE DRILLED AND EPOXY GROUTED IN PLACE ACCORDING TO ARTICLE 584 OF THE STANDARD SPECIFICATIONS. DRILLING DEPTH SHALL BE APPROX. DOWN TO THE BOTTOM LAYER OF DECK STEEL (+/- 6"). v2(E) AND v4(E) BARS SHALL ALTERNATE WITH EACH OTHER AS DETAILED IN THE PLAN DRAWING.

ALL REINFORCEMENT SHOWN ON THIS SHEET IS INCLUDED IN THE BILL OF MATERIAL SHOWN ON SHEET 7.

CONTRACT 72A87  
WINGWALL & TAPER  
RE-BAR DETAIL  
(NOT TO SCALE)