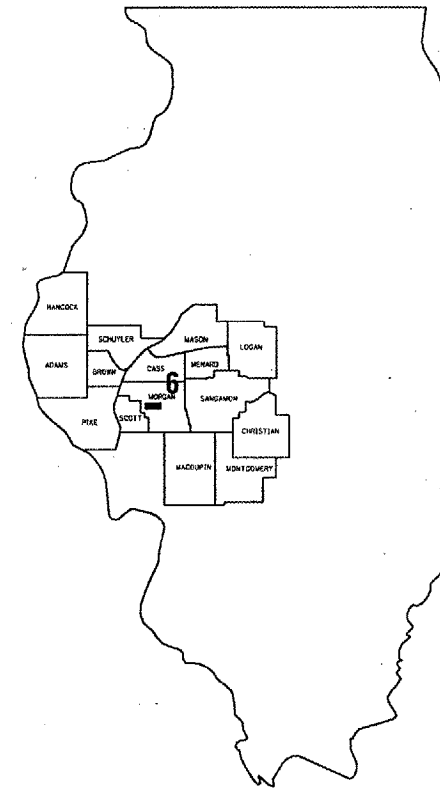
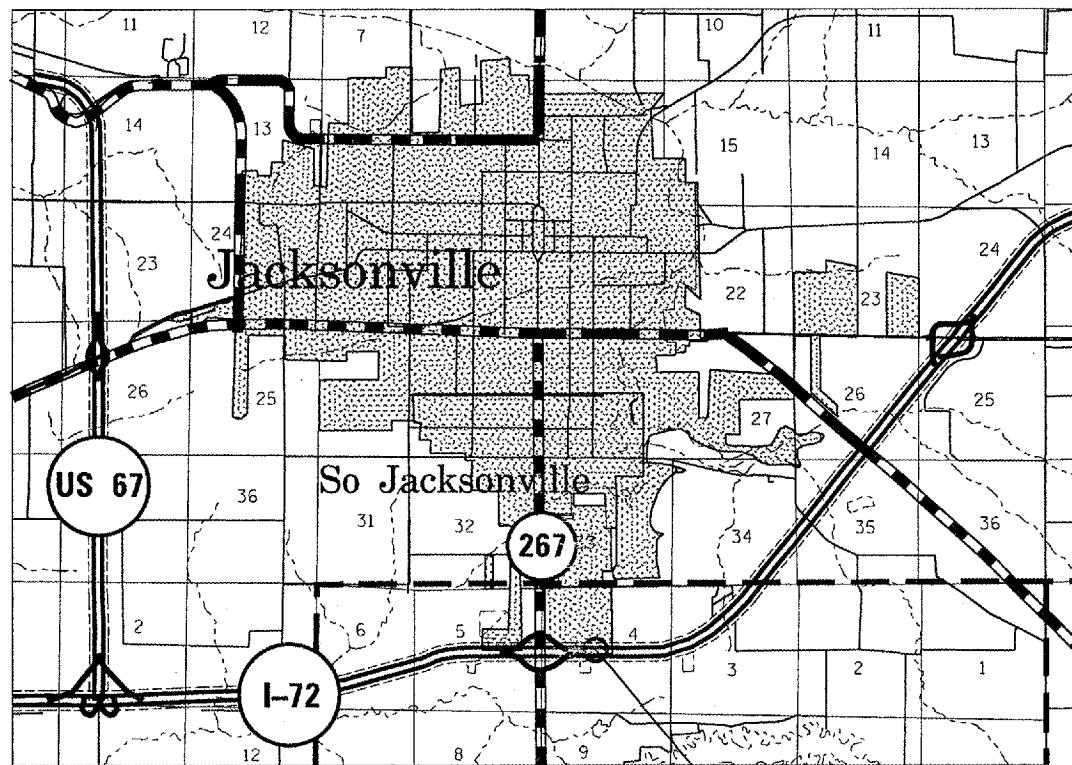


FOR INDEX OF SHEETS AND HIGHWAY
STANDARDS, SEE SHEET 2.

STATE OF ILLINOIS
DEPARTMENT OF TRANSPORTATION
DIVISION OF HIGHWAYS
**PLANS FOR PROPOSED
CONTRACT MAINTENANCE**
FAI ROUTE 72 (I-72)
SECTION (69-8VB)BR-1
MORGAN COUNTY
C96-021-07 / D96-010-07



LOCATION OF SECTION INDICATED THUS: 



SN 069-0036
(WBL)

NET LENGTH OF SEC 171 FT=0.03 MILE


J. U. L. I. E.
JOINT UTILITY LOCATION INFORMATION FOR EXCAVATION
1-800-892-0123

BRIDGE ENGINEER: STEVE BERAN
PHONE: (217) 785-9290


CONTRACT NO. 72A87

STATE OF ILLINOIS
DEPARTMENT OF TRANSPORTATION
DIVISION OF HIGHWAYS

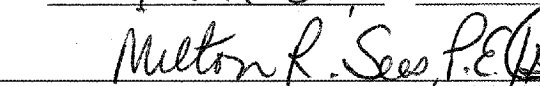
SUBMITTED JAN. 19, 20 07


DEPUTY DIRECTOR OF HIGHWAYS, REGION FOUR ENGINEER

March 23, 20 07


Interim ENGINEER OF DESIGN AND ENVIRONMENT

March 23, 20 07


DIRECTOR, DIVISION OF HIGHWAYS

INDEX OF SHEETS

1	COVER SHEET
2	INDEX OF SHEETS, GENERAL NOTES, & SIGNATURES
3	SUMMARY OF QUANTITIES
4	EXISTING PLAN & ELEVATION VIEWS
5	CONCRETE REMOVAL DETAILS
6	PROPOSED PARAPET DETAILS
7	REINFORCEMENT DETAILS
8	BAR DRILLING LOCATION DETAILS
9	WINGWALL & TAPER CONCRETE DETAILS
10	WINGWALL & TAPER REINFORCEMENT DETAILS

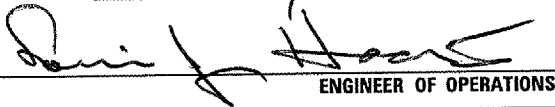


STANDARDS

701101-01
701106-01
701400-02
701402-05
701406-04
702001-06
704001-03

GENERAL NOTES:

PLAN DIMENSIONS AND DETAILS RELATIVE TO EXISTING PLANS ARE SUBJECT TO ROUTINE VARIATIONS. THE CONTRACTOR SHALL FIELD VERIFY EXISTING DIMENSIONS AND DETAILS AFFECTING NEW CONSTRUCTION AND MAKE NECESSARY APPROVED ADJUSTMENTS PRIOR TO CONSTRUCTION OR ORDERING OF MATERIALS. SUCH VARIATIONS SHALL NOT BE CAUSE FOR ADDITIONAL COMPENSATION FOR A CHANGE IN THE SCOPE OF WORK, HOWEVER, THE CONTRACTOR WILL BE PAID FOR THE QUANTITY ACTUALLY FURNISHED AT THE UNIT PRICE FOR THE WORK.

EXISTING VERTICAL REINFORCEMENT EXTENDING INTO THE REMOVAL AREA SHALL BE CLEANED, STRAIGHTENED, AND INCORPORATED INTO THE NEW CONSTRUCTION. ANY VERTICAL REINFORCEMENT BARS THAT ARE DAMAGED DURING CONCRETE REMOVAL SHALL BE REPLACED WITH AN APPROVED BAR SPLICER OR ANCHORAGE SYSTEM. COST SHALL BE INCLUDED WITH CONCRETE REMOVAL.

STATE OF ILLINOIS DEPARTMENT OF TRANSPORTATION DIVISION OF HIGHWAYS DISTRICT 6	
EXAMINED	January 8 20 07
 ENGINEER OF OPERATIONS	
EXAMINED	Jan 9 20 07
 ENGINEER OF PROGRAM IMPLEMENTATION	
EXAMINED	Jan 9 20 07
 ENGINEER OF PROGRAM DEVELOPMENT	

CONTRACT 72A87
INDEX OF SHEETS,
GENERAL NOTES,
& SIGNATURES

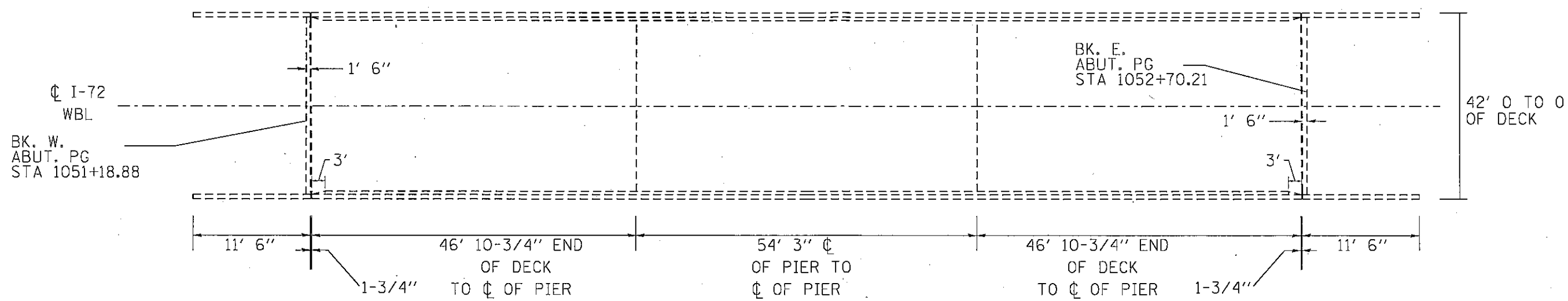
SUMMARY OF QUANTITIES

100% STATE
URBAN

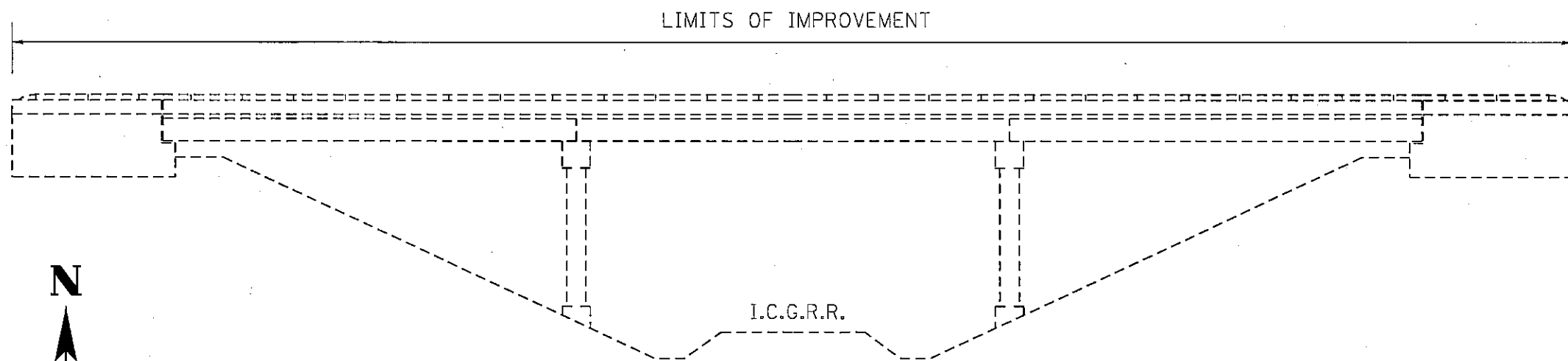
ITEM	DESCRIPTION	UNIT	QUANTITY	SFTY-2A MORGAN
50102400	CONCRETE REMOVAL	CU YD	30.3	30.3
50300255	CONCRETE SUPERSTRUCTURE	CU YD	36.5	36.5
50800205	REINFORCEMENT BARS, EPOXY COATED	POUND	5802	5802
67100100	MOBILIZATION	L SUM	1	1
70100700	TRAFFIC CONTROL AND PROTECTION, STANDARD 701406	L SUM	1	1
70100805	TRAFFIC CONTROL AND PROTECTION, STANDARD 701402	L SUM	1	1
70400100	TEMPORARY CONCRETE BARRIER	FOOT	330	330
70400200	RELOCATE TEMPORARY CONCRETE BARRIER	FOOT	330	330
Z0030250	IMPACT ATTENUATORS, TEMPORARY (NON-REDIRECTIVE), TEST LEVEL 3	EACH	1	1
Z0030350	IMPACT ATTENUATORS, RELOCATE (NON-REDIRECTIVE), TEST LEVEL 3	EACH	1	1
50157300	PROTECTIVE SHIELD	SQ YD	200	200
Z0048665	RAILROAD PROTECTIVE LIABILITY INSURANCE	L SUM	1	1
X0325305	STRUCTURAL REPAIR OF CONCRETE (DEPTH EQUAL TO OR LESS THAN 5")	SQ FT	75	75

CONTRACT 72A87
SUMMARY OF
QUANTITIES

Rev.



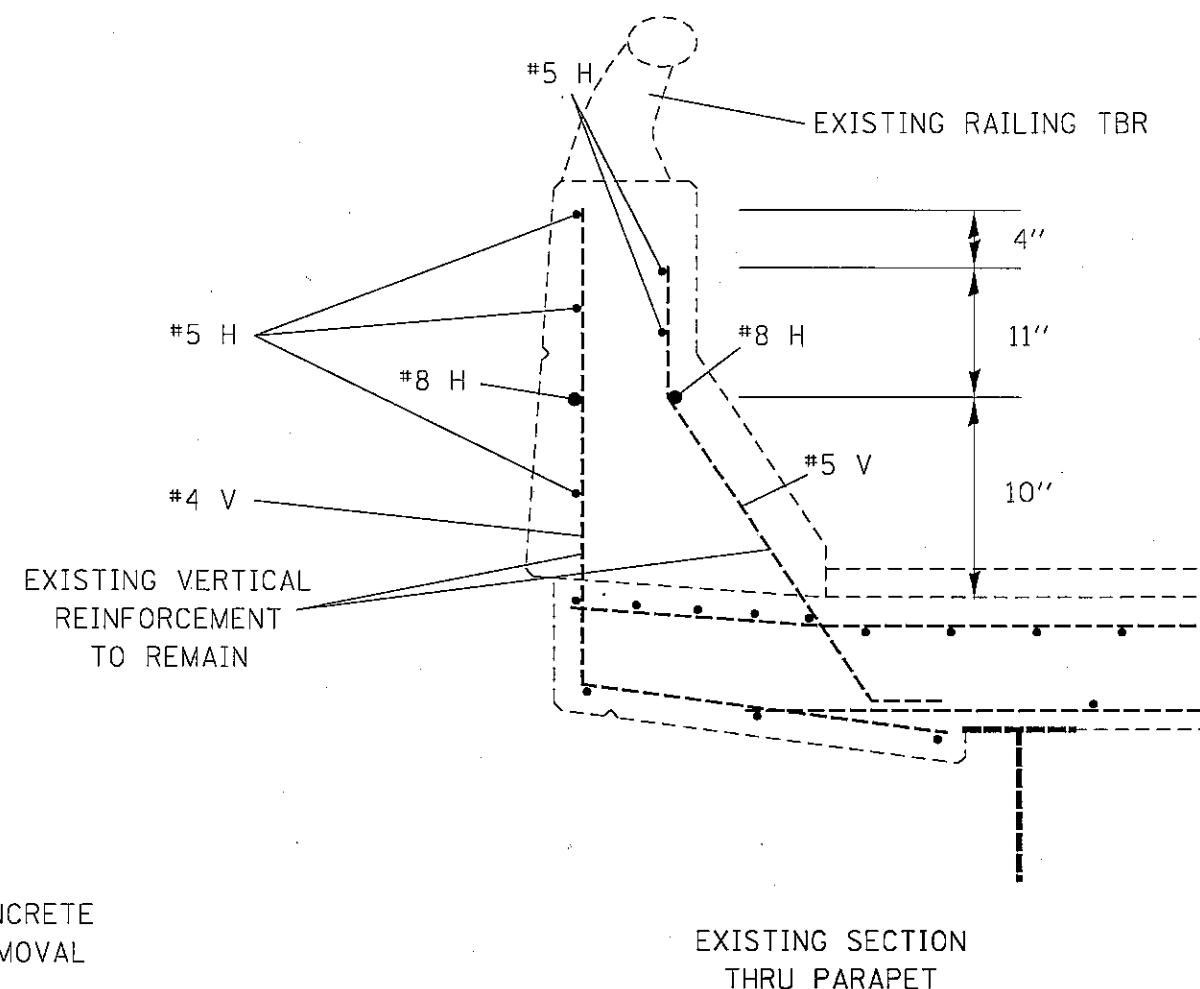
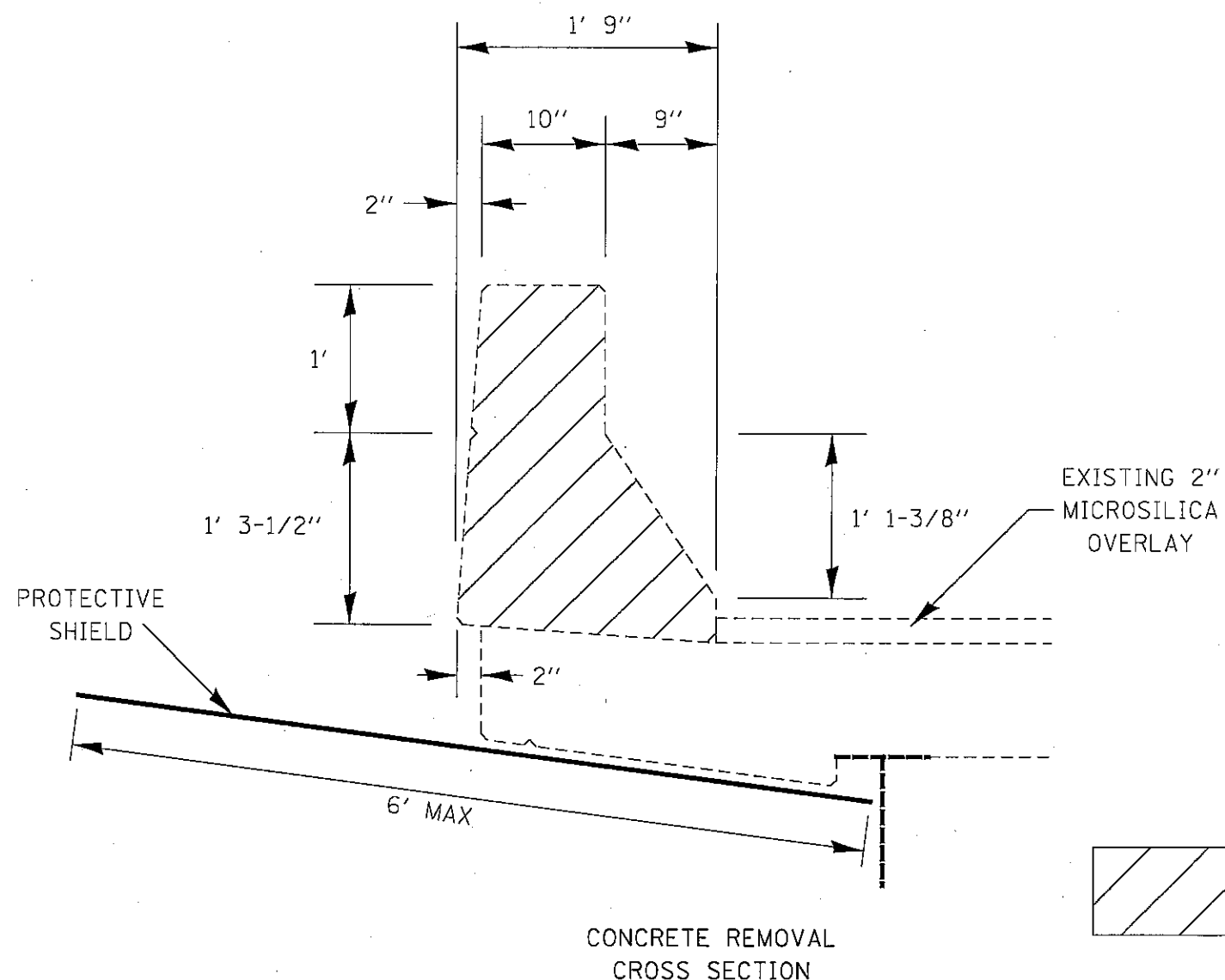
PLAN VIEW



ELEVATION VIEW



CONTRACT 72A87
EXISTING PLAN
& ELEVATION VIEWS
(NOT TO SCALE)

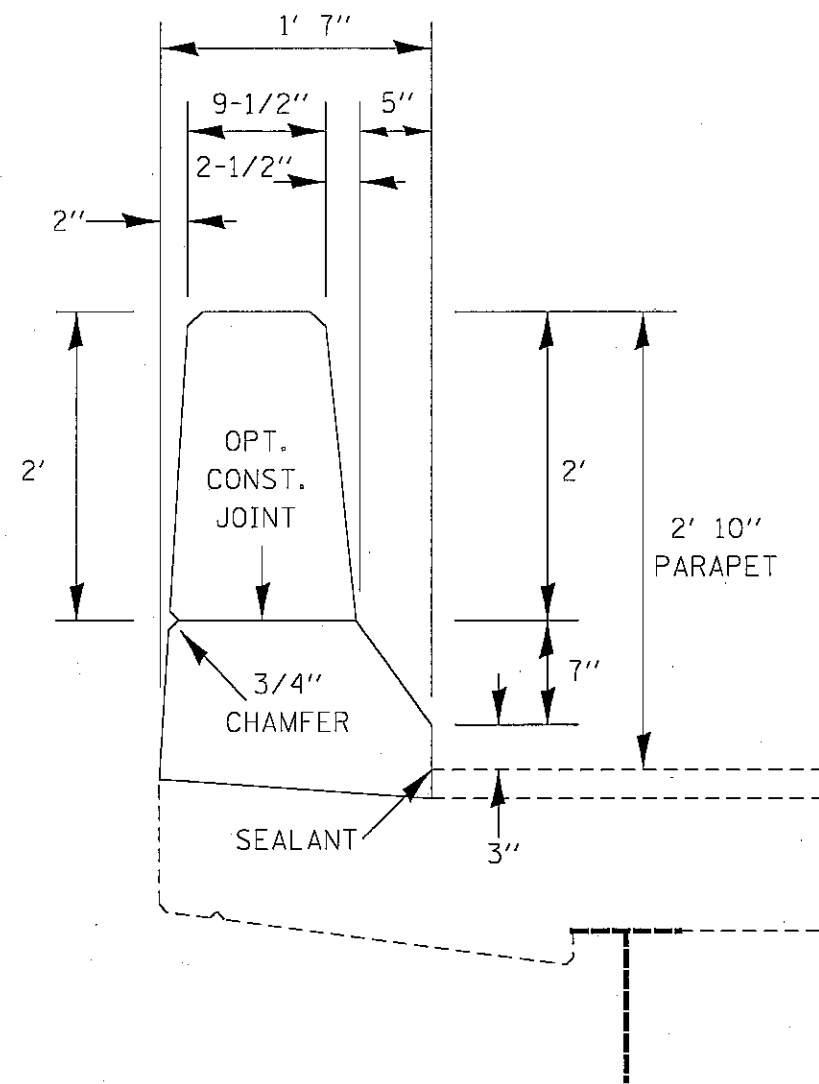


NOTES:

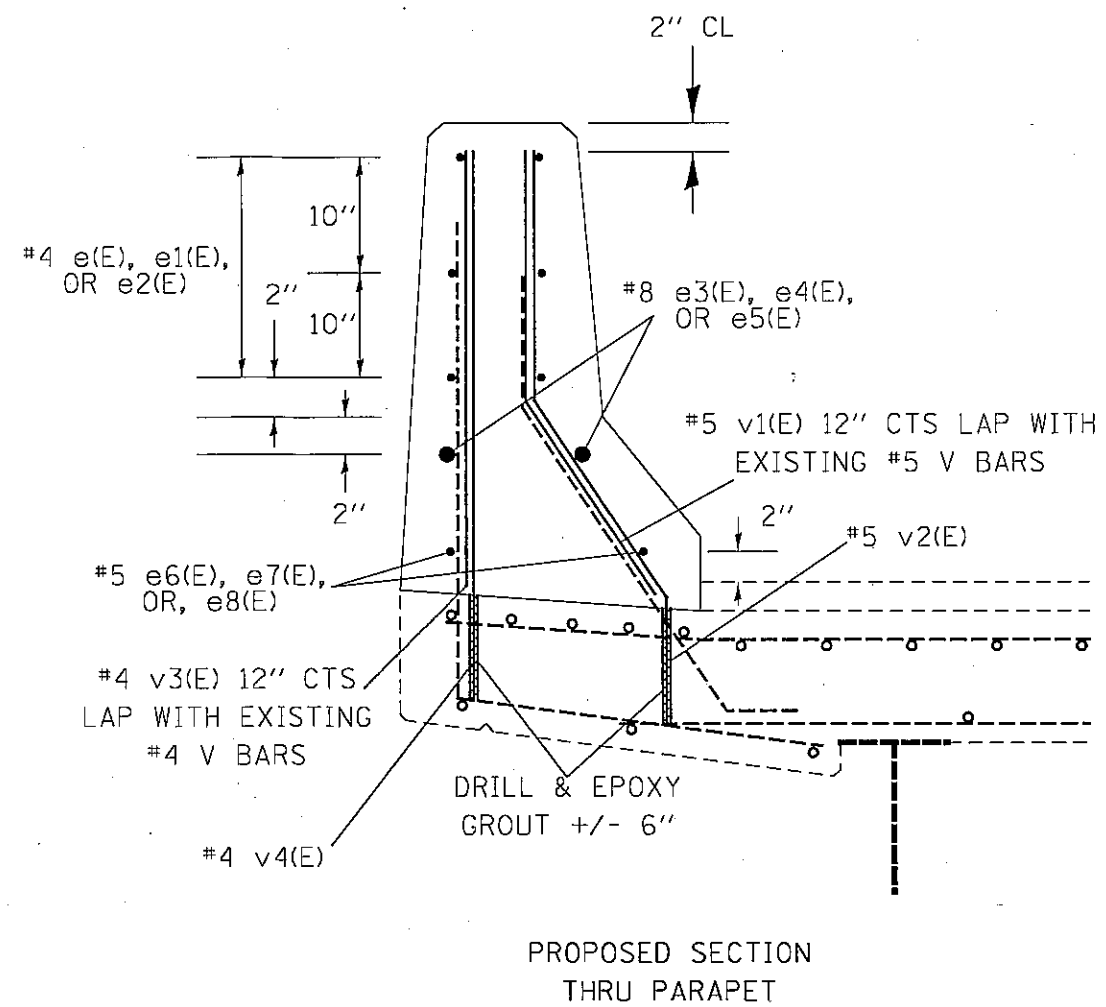
CARE SHALL BE TAKEN AT THE REMOVAL POINT WHERE THE PARAPET MEETS THE EXISTING MICROSILICA OVERLAY. THE ENGINEER MAY ELECT TO REQUIRE A SAW CUT AND/OR REMOVAL BY HAND AT THIS LOCATION IN ORDER TO ENSURE PROTECTION OF THE MICROSILICA BRIDGE DECK. AN APPROVED SEALANT AS DETAILED IN THE SPECIAL PROVISIONS SHALL BE APPLIED IN THIS AREA AFTER RECONSTRUCTION IS COMPLETE. THE CONTRACTOR SHALL INCLUDE THE PRICE OF ALL WORK DESCRIBED ABOVE IN THE BID PRICE FOR CONCRETE SUPERSTRUCTURE.

THE PROTECTIVE SHIELD SHALL EXTEND INWARD TO THE WEB OF THE FIRST BEAM AND SHALL SERVE AS A BOTTOM FORM FOR ANY STRUCTURAL REPAIR OF CONCRETE FOR THE DECK THAT BECOMES NECESSARY DUE TO SPALLING CONCRETE DURING REMOVAL.

CONTRACT 72A87
CONCRETE REMOVAL
DETAILS
(NOT TO SCALE)



CONCRETE SUPERSTRUCTURE
CROSS SECTION



PROPOSED SECTION
THRU PARAPET

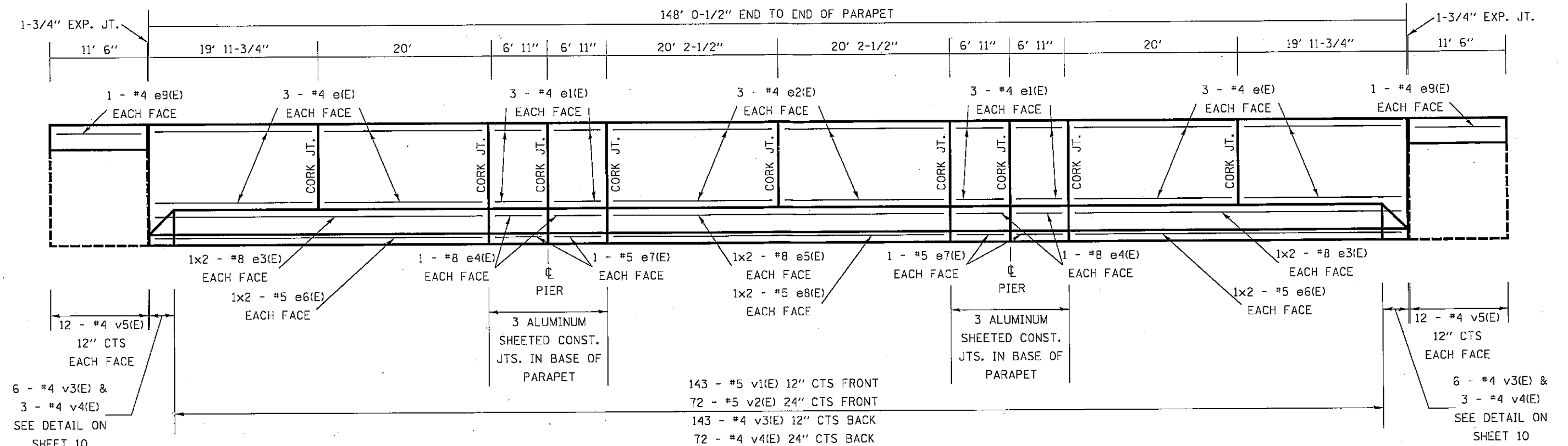
NOTES:

EXISTING RE-BAR DEPTHS WILL VARY DEPENDING ON THE DEPTH OF CONCRETE ACTUALLY REMOVED DURING CONST.

v2(E) AND v4(E) BARS SHALL BE DRILLED AND EPOXY GROUTED IN PLACE ACCORDING TO ARTICLE 584 OF THE STANDARD SPECIFICATIONS. DRILLING DEPTH SHALL BE APPROXIMATELY DOWN TO THE BOTTOM LAYER OF DECK STEEL (+/- 6"). v2(E) AND v4(E) BARS SHALL ALTERNATE WITH EACH OTHER AS DETAILED IN THE PLAN DRAWING ON SHEET 8.

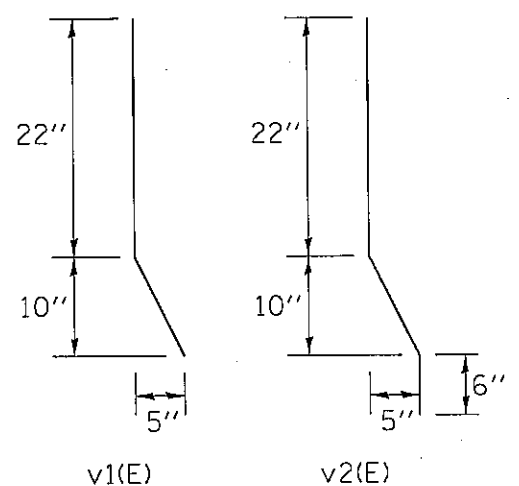
THE 3/4" CHAMFER IN THE BACK OF THE PARAPET WALL MAY BE OMITTED IF THE OPTIONAL CONSTRUCTION JOINT IS NOT USED

CONTRACT 72A87
PROPOSED PARAPET
DETAILS
(NOT TO SCALE)



PARAPET ELEV. INSIDE FACE

BAR SHAPE DETAILS



MINIMUM BAR LAPS

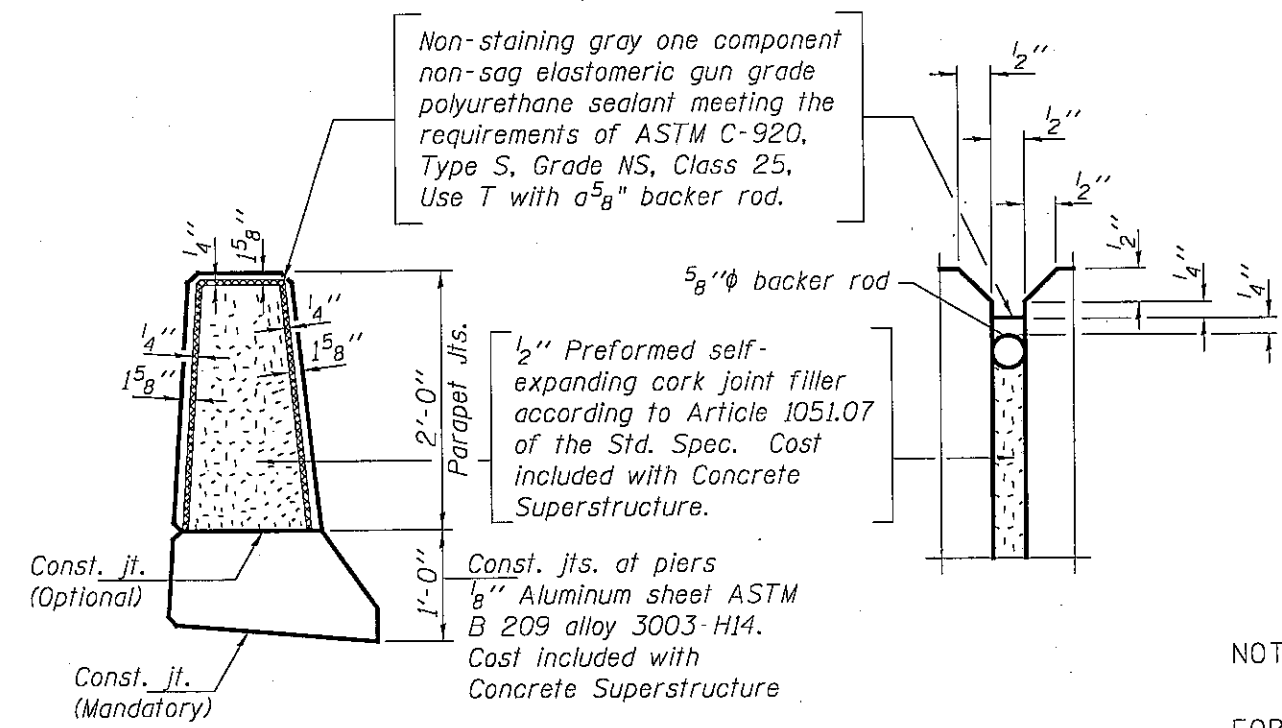
- #5 BAR = 1' 8"
- #8 BAR = 3' 5"

NOTES:

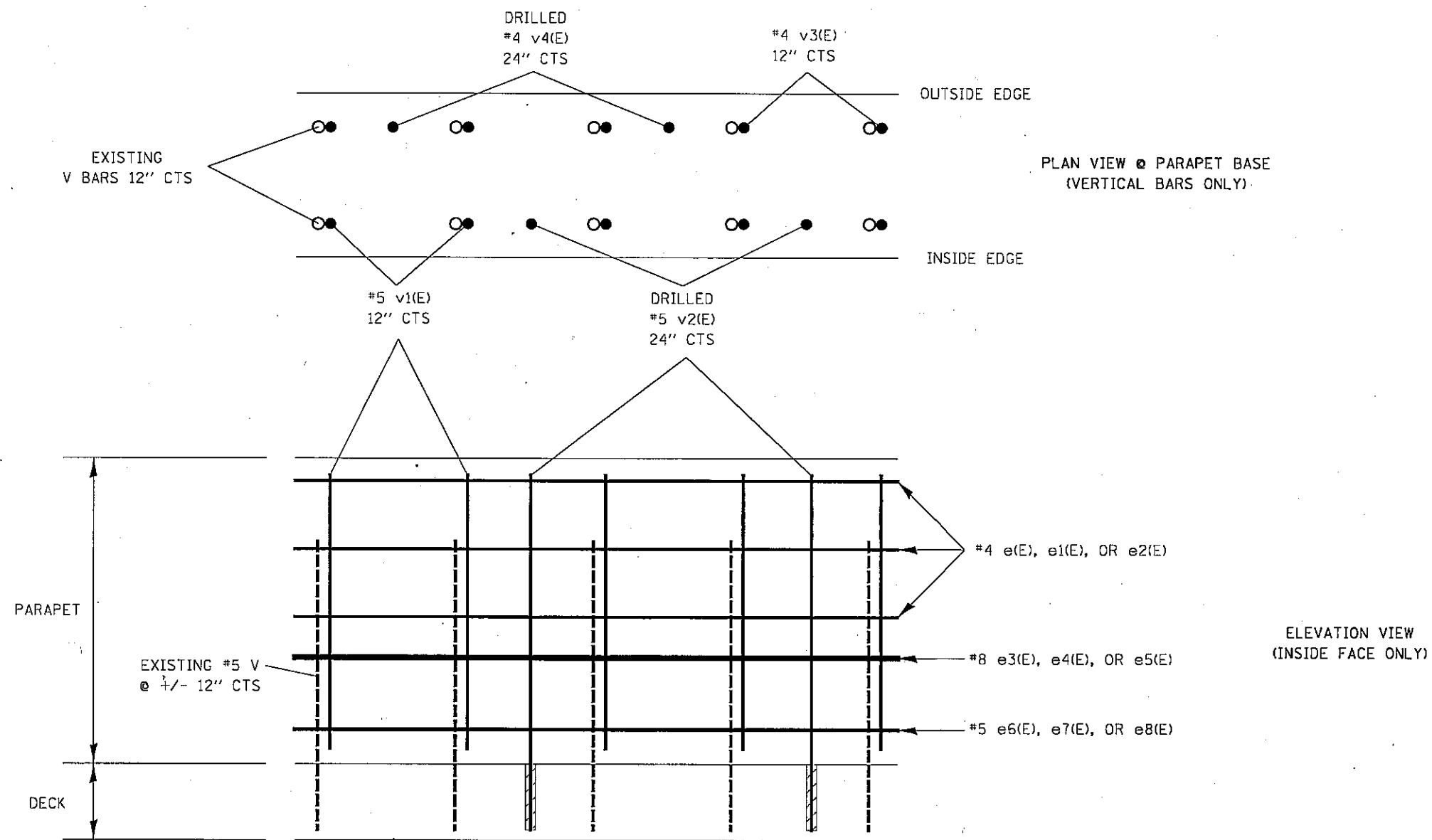
FOR PROPOSED SECTION THRU PARAPET DETAILS, SEE SHEET 6 OF 10.

BILL OF MATERIAL				
BAR	#	SIZE	LENGTH	LENGTH
v1(E)	286	#5	2'-10"	
v2(E)	144	#5	3'-4"	
v3(E)	310	#4	2'-8"	
v4(E)	156	#4	3'-2"	
v5(E)	96	#4	11"	
e(E)	48	#4	19'-8"	
e1(E)	48	#4	6'-7"	
e2(E)	24	#4	19'-10"	
e3(E)	16	#8	21'-7"	
e4(E)	16	#8	6'-7"	
e5(E)	8	#8	21'-9"	
e6(E)	16	#5	20'-8"	
e7(E)	16	#5	6'-7"	
e8(E)	8	#5	20'-10"	
e9(E)	8	#4	11'-2"	
RE-BAR EPOXY COATED				5802 POUNDS
CONCRETE REMOVAL				30.3 CU YD
CONCRETE SUPERSTRUCTURE				36.5 CU YD

PARAPET JOINT DETAILS



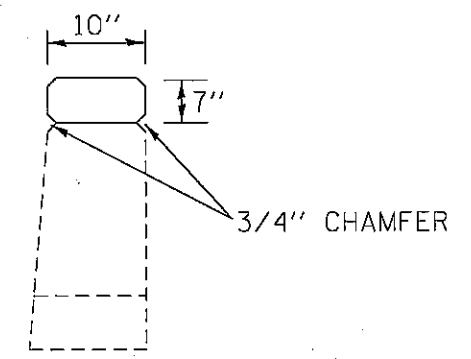
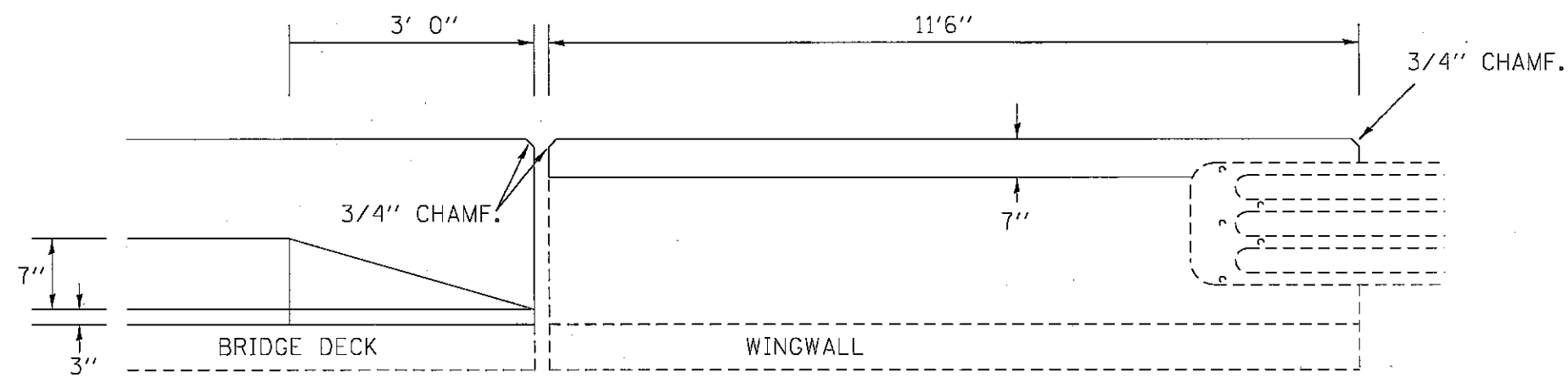
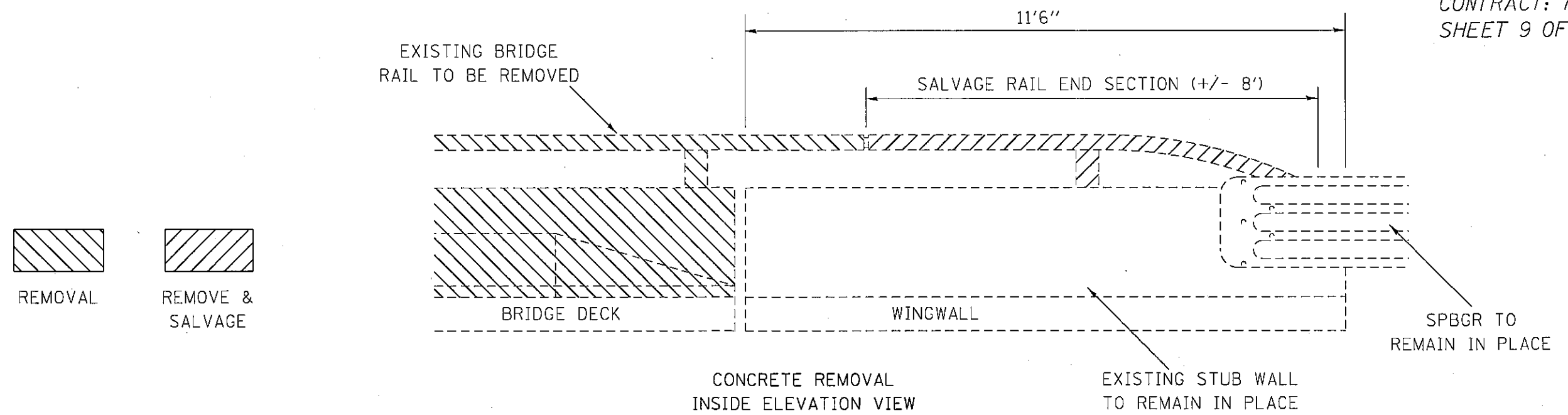
**CONTRACT 72A87
REINFORCEMENT
& JOINTING
DETAILS**



NOTES:

v2(E) AND v4(E) BARS SHALL BE DRILLED AND EPOXY GROUTED IN PLACE ACCORDING TO ARTICLE 584 OF THE STANDARD SPECIFICATIONS. DRILLING DEPTH SHALL BE APPROX. DOWN TO THE BOTTOM LAYER OF DECK STEEL (+/- 6"). v2(E) AND v4(E) BARS SHALL ALTERNATE WITH EACH OTHER AS DETAILED IN THE PLAN DRAWING.

CONTRACT 72A87
BAR DRILLING
LOCATION DETAIL
(NOT TO SCALE)



NOTES:

THE PROPOSED WINGWALL CAP SHALL BE POURED THE ENTIRE LENGTH OF THE WINGWALL AND SHALL INCORPORATE THE EXISTING SPBGR HARDWARE PRESENT.

THE CURVED END SECTIONS OF EXISTING RAIL SHALL BE SALVAGED AND REMAIN IN IDOT POSSESSION. AFTER REMOVAL, THE CONTRACTOR SHALL CONTACT DAVE COPENBARGER AT (217) 785-5306 FOR RETRIEVAL OF THE END SECTIONS. ALL OTHER SECTIONS OF RAIL SHALL BE DISPOSED OF BY THE CONTRACTOR. THE CONTRACTOR SHALL INCLUDE THE COST OF THE RAIL REMOVAL AND DISPOSAL IN THE BID PRICE FOR CONCRETE REMOVAL.

ALL CONSTRUCTION JOINTS SHALL BE BONDED.

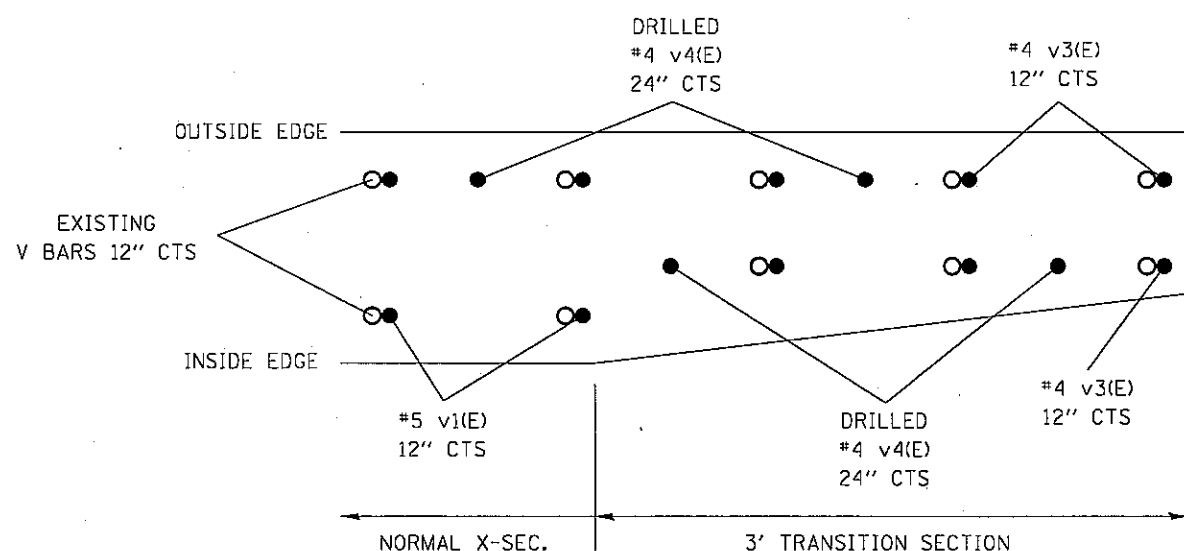
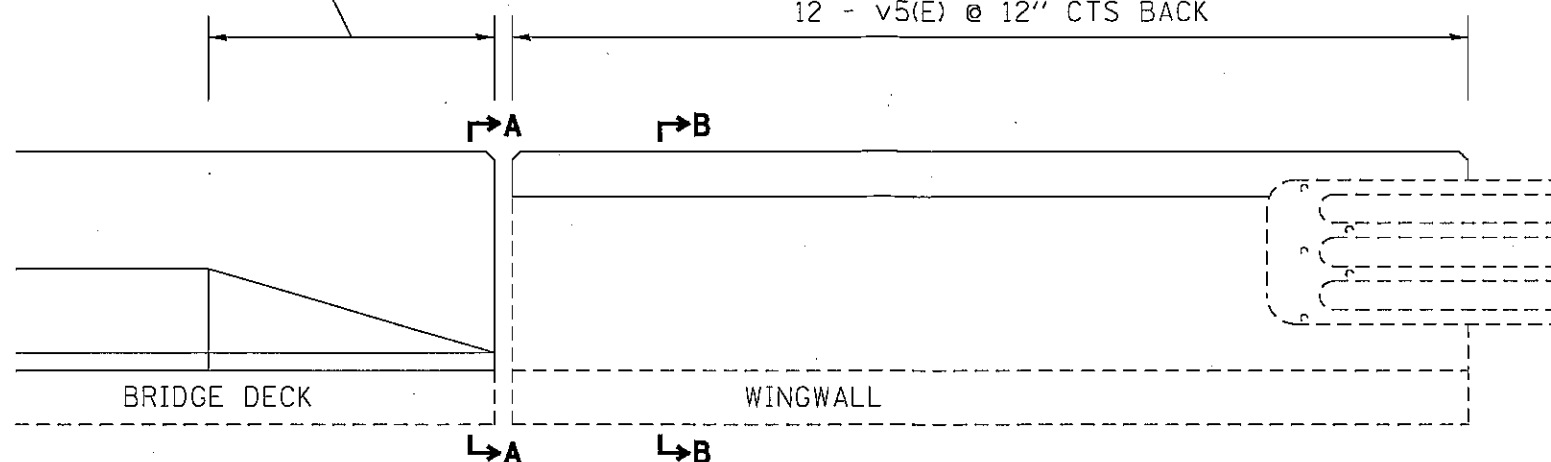
CONTRACT 72A87
WINGWALL & TAPER
CONCRETE DETAILS
(NOT TO SCALE)

3 - v3(E) @ 12" CTS & 2 - v4(E) @ 24" CTS FRONT
3 - v3(E) @ 12" CTS & 1 - v4(E) BACK (SEE DETAIL)

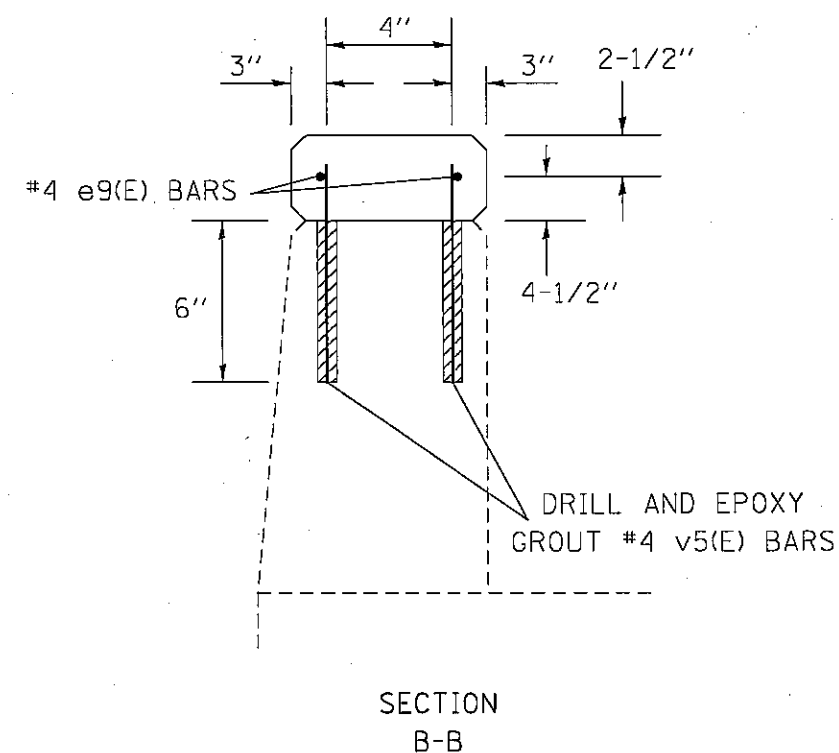
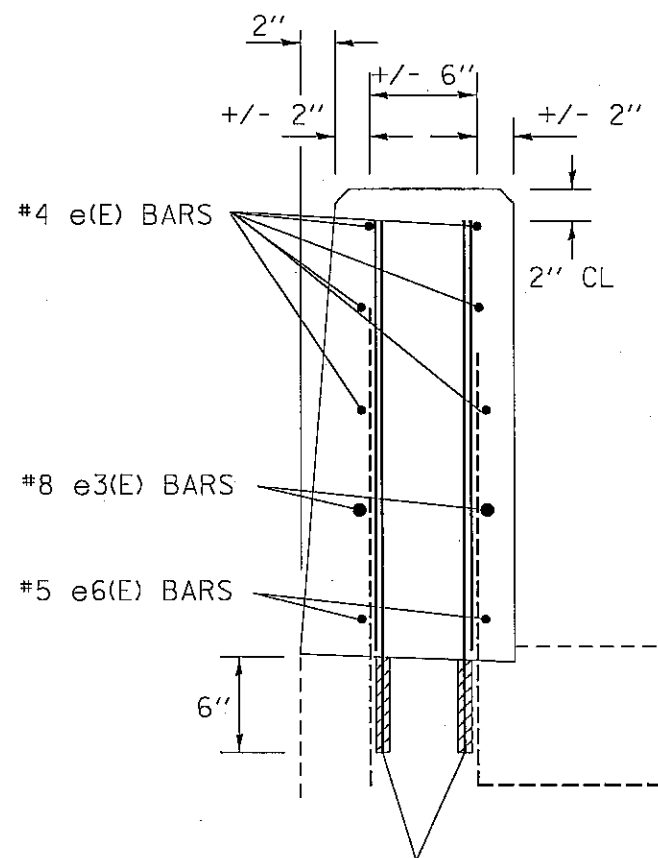
12 - v5(E) @ 12" CTS FRONT
12 - v5(E) @ 12" CTS BACK

#4 e(E), #8 e3(E),
AND #5 e6(E) BARS
AS DETAILED
ON SHEETS 6 & 7
(BEND BOTTOM
BAR 3' FOR
WALL TAPER)

2 - #4 e9(E) BARS
AS DETAILED BELOW



PLAN VIEW @ PARAPET BASE
(VERTICAL BARS ONLY)



NOTES:

v2(E) AND v4(E) BARS SHALL BE DRILLED AND EPOXY GROUTED IN PLACE ACCORDING TO ARTICLE 584 OF THE STANDARD SPECIFICATIONS. DRILLING DEPTH SHALL BE APPROX. DOWN TO THE BOTTOM LAYER OF DECK STEEL (+/- 6"). v2(E) AND v4(E) BARS SHALL ALTERNATE WITH EACH OTHER AS DETAILED IN THE PLAN DRAWING.

ALL REINFORCEMENT SHOWN ON THIS SHEET IS INCLUDED IN THE BILL OF MATERIAL SHOWN ON SHEET 7.

CONTRACT 72A87
WINGWALL & TAPER
RE-BAR DETAIL
(NOT TO SCALE)