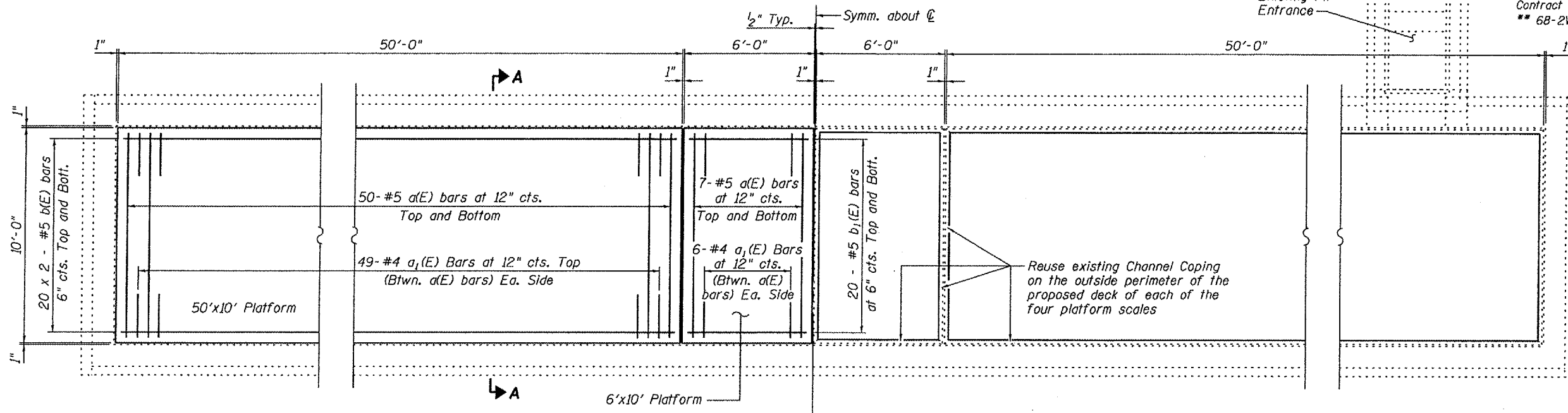


STATE OF ILLINOIS  
DEPARTMENT OF TRANSPORTATION

ROUTE NO.	SECTION	COUNTY	SHEETS	SHEET NO.	SHEET NO.
F.A.I. 55	##	MONTGOMERY	7	7	4
FED. ROAD DIST. NO. 7		ILLINOIS	FED. AID PROJECT		

Contract #72A95  
## 68-2WS-4



SHOWING REINFORCEMENT

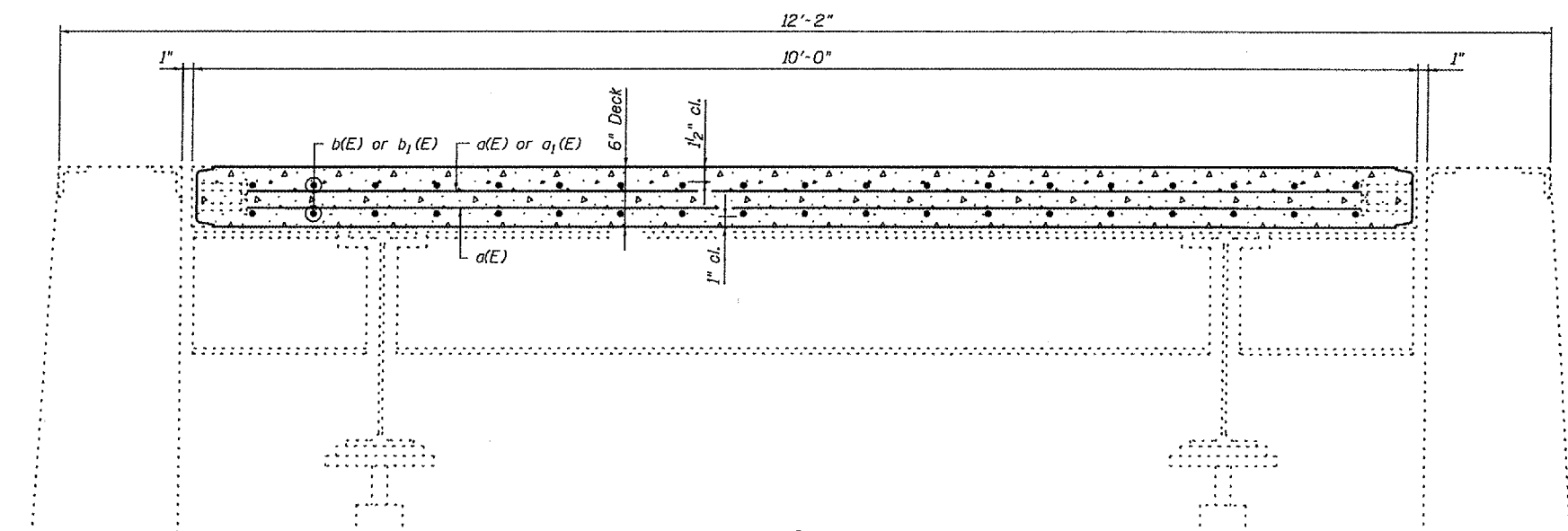
PLAN

SHOWING CHANNEL COPING

BILL OF MATERIAL

Bar	No.	Size	Length	Shape
a(E)	228	#5	9'-8"	—
a <sub>1</sub> (E)	220	#4	2'-0"	—
b(E)	160	#5	25'-8"	—
b <sub>1</sub> (E)	80	#5	5'-8"	—
Concrete Superstructure			Cu. Yd.	20.7
Reinforcement Bars, Epoxy Coated			Pound	7,350

MIN. BAR LAP  
#5 bar = 1'-8"



SECTION A-A

Notes:  
After removal of the existing deck, all debris on the scale pedestals and bottom slab of the pit shall be removed and the existing drain holes cleared as directed by the Engineer. Cast included with "Cleaning & Painting Steel Bridge No. 1".  
Bars indicated thus 20 x 2 - #5 etc. indicates 20 lines of bars with 2 lengths per line.

DESIGNED	S.D.S.
CHECKED	C.W.C.
DRAWN	D.L.H.
CHECKED	S.D.S.

**WHKS & CO.**

ENGINEERS — PLANNERS — LAND SURVEYORS

WILSON CITY, IA    OUBOUKE, IA    AMES, IA    SPRINGFIELD, IL    ROCHESTER, MN

CONCRETE DECK DETAILS  
LITCHFIELD WEIGH STATION  
F.A.I. ROUTE 55 SECTION 68-2WS-4  
MONTGOMERY COUNTY  
STA. 1836+54.94 (N.B. ONLY)