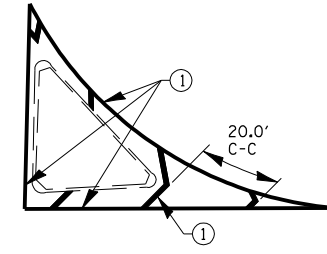


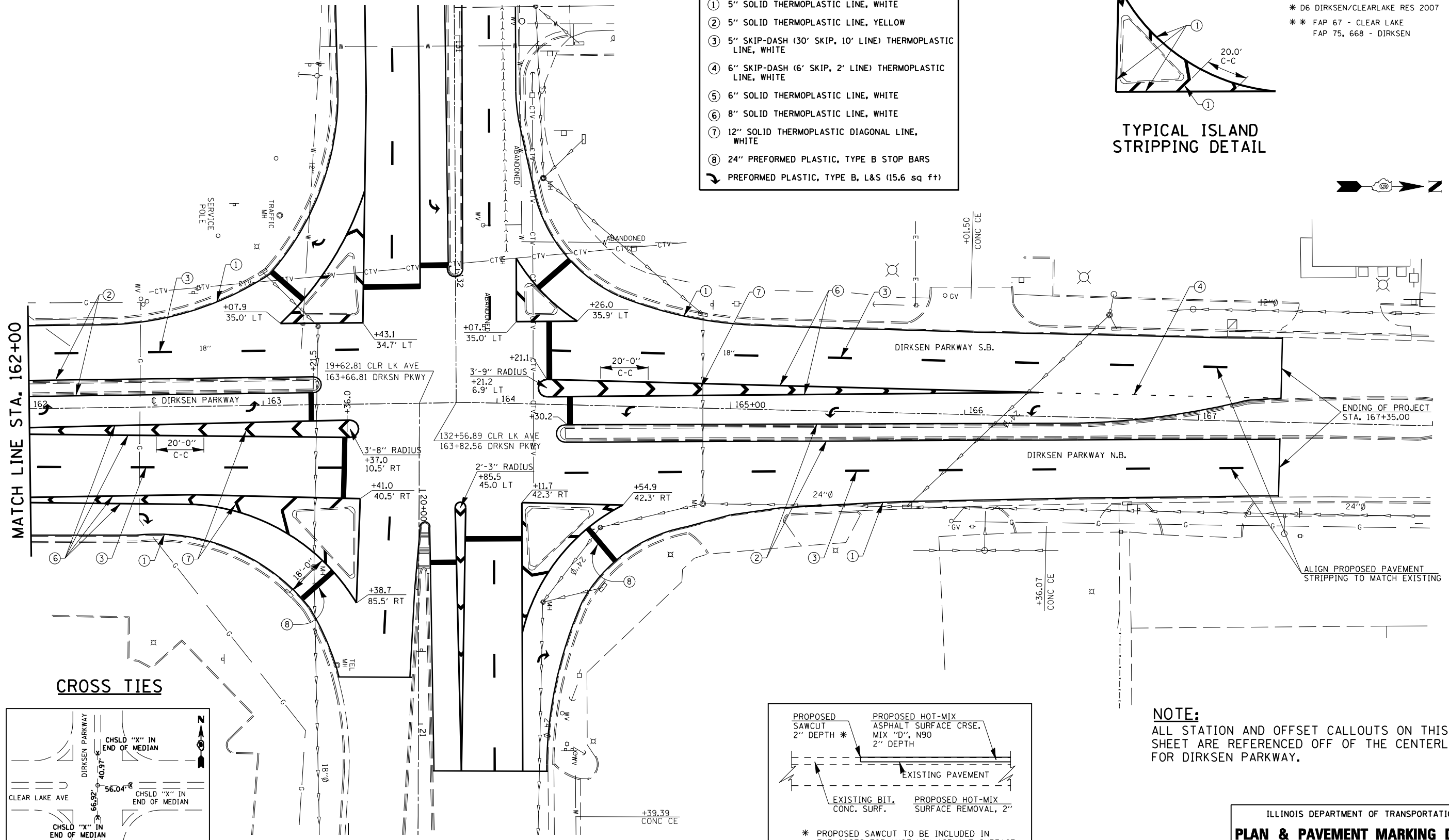
FAP RTE.	SECTION	COUNTY	TOTAL SHEETS	SHEET NO.
**	*	SANGAMON	14	14
STA.		TO STA.		
FED. ROAD DIST. NO.		ILLINOIS FED. AID PROJECT		
* D6 DIRKSEN/CLEARLAKE RES 2007				
** FAP 67 - CLEAR LAKE				
FAP 75, 668 - DIRKSEN				

SEE SHEETS 10 & 11 FOR WEST LEG OF CLEAR LAKE AVE.

LEGEND	
①	5" SOLID THERMOPLASTIC LINE, WHITE
②	5" SOLID THERMOPLASTIC LINE, YELLOW
③	5" SKIP-DASH (30' SKIP, 10' LINE) THERMOPLASTIC LINE, WHITE
④	6" SKIP-DASH (6' SKIP, 2' LINE) THERMOPLASTIC LINE, WHITE
⑤	6" SOLID THERMOPLASTIC LINE, WHITE
⑥	8" SOLID THERMOPLASTIC LINE, WHITE
⑦	12" SOLID THERMOPLASTIC DIAGONAL LINE, WHITE
⑧	24" PREFORMED PLASTIC, TYPE B STOP BARS
↔	PREFORMED PLASTIC, TYPE B, L&S (15.6 sq ft)



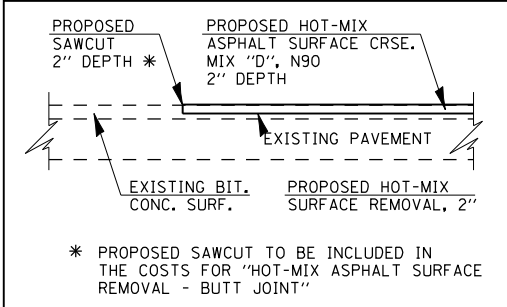
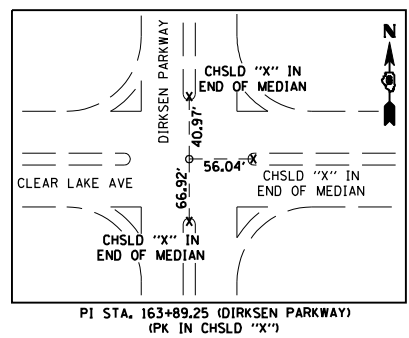
TYPICAL ISLAND STRIPPING DETAIL



MATCH LINE STA. 162+00

ENDING OF PROJECT STA. 167+35.00

CROSS TIES



NOTE:
ALL STATION AND OFFSET CALLOUTS ON THIS SHEET ARE REFERENCED OFF OF THE CENTERLINE FOR DIRKSEN PARKWAY.

ILLINOIS DEPARTMENT OF TRANSPORTATION
PLAN & PAVEMENT MARKING DETAILS
DIRKSEN PARKWAY
SECTION: D6 DIRKSEN/CLEARLAKE RES 2007
SANGAMON COUNTY