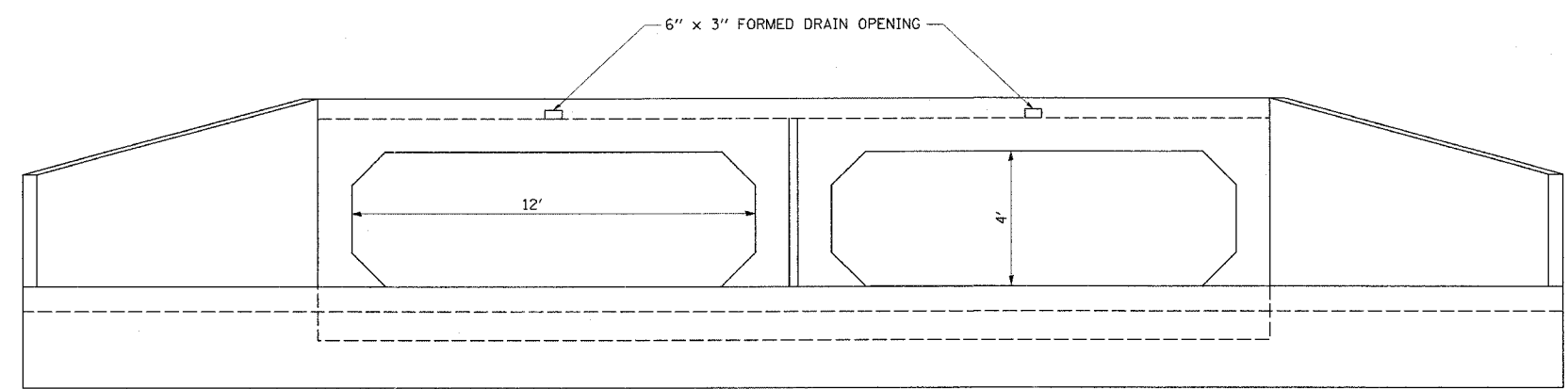
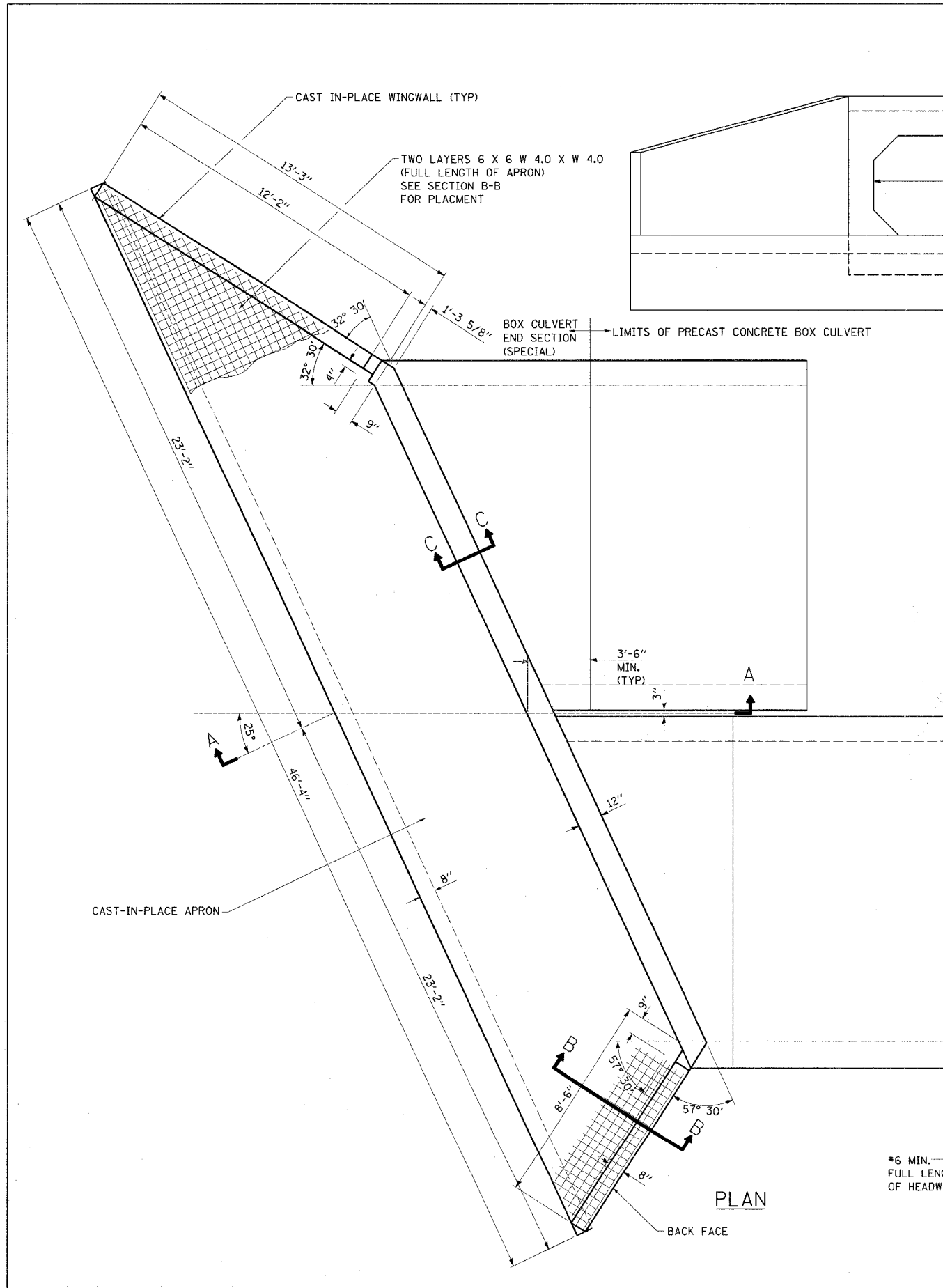
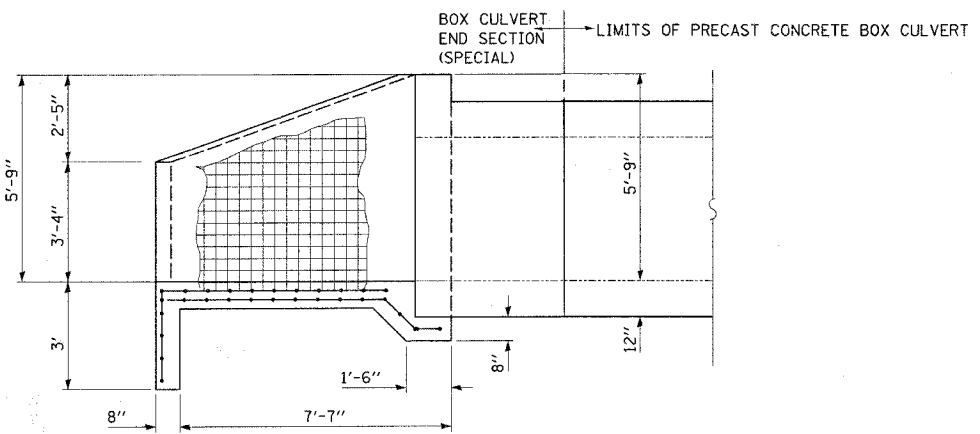


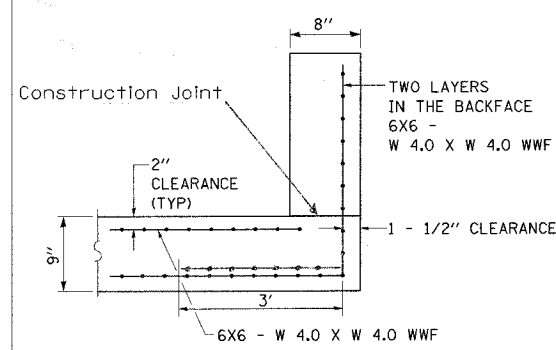
F.A.P. RTE.	SECTION	COUNTY	TOTAL SHEETS	SHEET NO.
320	*	MACON	31	26
STA.	TO STA.			
FED. ROAD DIST. NO.	ILLINOIS FED. AID PROJECT			
• (101)RS-3, 101B-1				



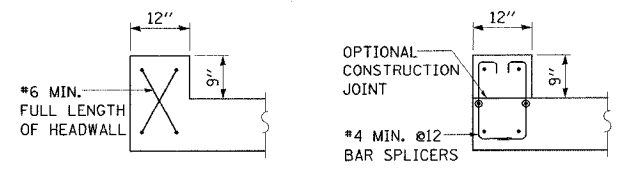
END ELEVATION



SECTION A-A



SECTION B-B



SECTION C-C
SHOWING HEADWALL REINFORCEMENT ONLY WITH MONOLITHIC HEADWALL

GENERAL NOTES

- Build tops of headwalls parallel to the grade line.
- All construction joints shall be bonded.
- Reinforcement bars shall conform to the requirements of ASTM A706 Gr 60 (IL Modified). See Special Provisions.
- When lapping sheets of welded wire fabric, the overlap measured between the outermost cross wires of each fabric sheet shall not be less than 8".
- The cost to construct the cast-in-place concrete apron shall be included in the cost of the end section.
- The precast manufacturer shall design and detail a connection / construction joint between the precast concrete box sections and the cast in place apron and wingwall. The minimum area of reinforcement passing through these construction joints shall be 0.20 in² / lineal ft and may be provided by welded wire fabric, rebar or bar splicers. The maximum spacing of reinforcement shall be 12 inches. The reinforcement shall extend on either side of the construction joint a distance required to fully develop the strength of the bar. The design shall be detailed in the shop drawings. The cost of the connection is included in the cost of the end section.

REVISIONS	
NAME	DATE

ILLINOIS DEPARTMENT OF TRANSPORTATION
REINFORCED CONCRETE END SECTIONS
FOR DOUBLE 12'X4' BOX CULVERT
AT STA. 149+88.5
(SKEWED 25° LT. FWD. WITH ROADWAY)
STR. NO. 058-2011

SCALE: VERT. _____
 HORIZ. _____

DATE _____ DRAWN BY _____
 CHECKED BY _____

PLOT DATE = #DATE#
 PLOT NAME = #FILE#
 PLOT SCALE = #SCALE#
 USER NAME = #USER#