

F.A.P. RTE.	SECTION	COUNTY	TOTAL SHEETS	SHEET NO.
320		MACON	31	1

• (101)RS-3, 101B-1

STATE OF ILLINOIS
DEPARTMENT OF TRANSPORTATION
DIVISION OF HIGHWAYS

**PROPOSED
HIGHWAY PLANS**

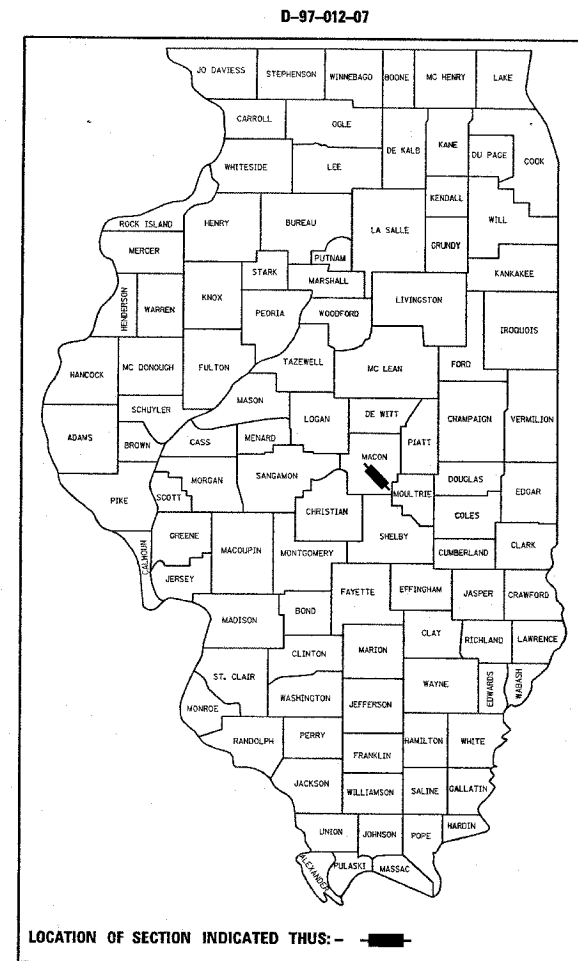
FAP ROUTE 320(IL 121)
SECTION (101)RS-3, 101 B-1
PROJECT : MA-0320(032)
MACON COUNTY
RESURFACING & BOX CULVERT REMOVAL
AND REPLACEMENT

C-97-013-07

FOR INDEX OF SHEETS, SEE SHEET NO. 2

STATION EQUATIONS

STA 870+04.21 BK = STA 60+44.79 AH
STA 236+89.79 BK = STA 236+73.58 AH
STA 264+13.49 BK = STA 265+85.36 AH

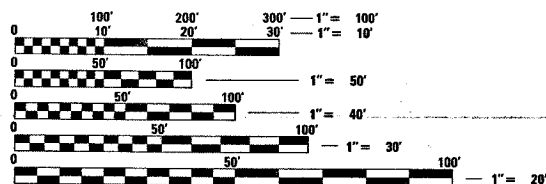
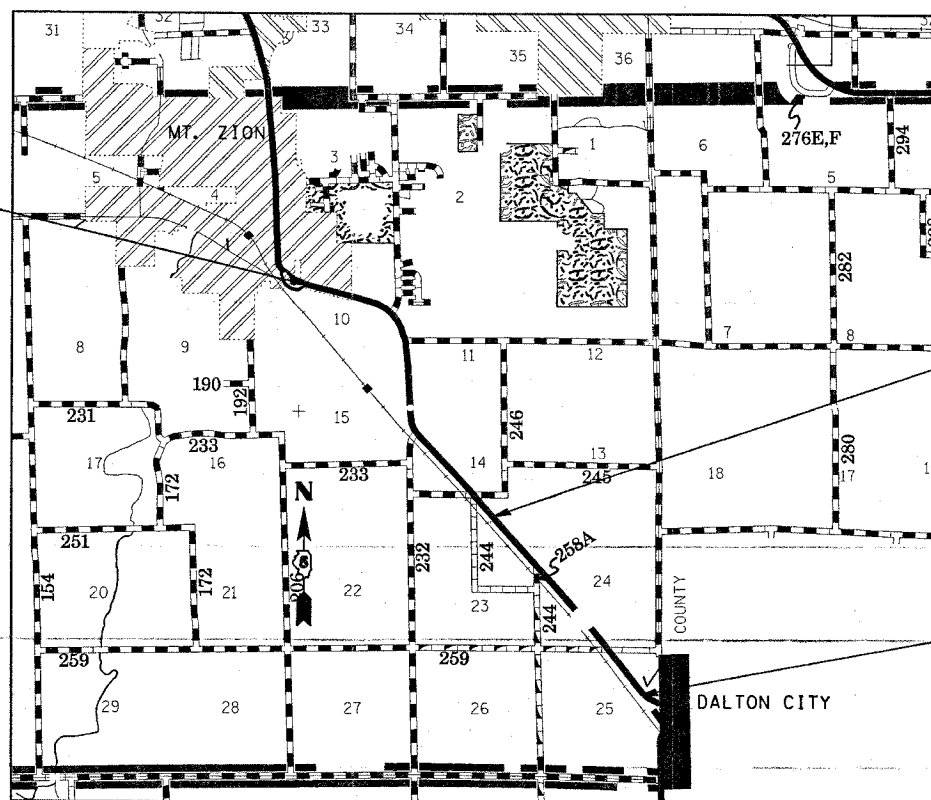


2006 ADT = 6500

PROJECT ENDS
STA 287+31.6

STA 149+88.5
SN 058-8324
DOUBLE 12X4X48' 6"
PRECAST CONCRETE
BOX CULVERT

PROJECT BEGINS
STA 869+00



FULL SIZE PLANS HAVE BEEN PREPARED USING STANDARD
ENGINEERING SCALES. REDUCED SIZED PLANS WILL NOT
CONFORM TO STANDARD SCALES. IN MAKING MEASUREMENTS
ON REDUCED PLANS, THE ABOVE SCALES MAY BE USED.

J.U.L.I.E.
JOINT UTILITY LOCATION INFORMATION FOR EXCAVATION
1-800-892-0123

STATE OF ILLINOIS
DEPARTMENT OF TRANSPORTATION
DIVISION OF HIGHWAYS

SUBMITTED FEB 7, 20 07
Christ H. Reed
DEPUTY DIRECTOR OF HIGHWAYS, REGION ENGINEER

March 23, 20 07
Eric E. Harrel
ENGINEER OF DESIGN AND ENVIRONMENT

March 23, 20 07
Milton R. Sear
DIRECTOR OF HIGHWAYS, CHIEF ENGINEER

**PRINTED BY THE AUTHORITY
OF THE STATE OF ILLINOIS**

GROSS LENGTH = 22635.30 FEET = 4.29 MILES
NET LENGTH = 22635.30 FEET = 4.29 MILES

PROJECT ENGINEER :
SQUAD LEADER : JOYCE HEMMEN
DESIGNER : JOYCE HEMMEN
TELEPHONE : 217/342-3951 EX 313

CONTRACT NO. 74225

F.A.P. RTE.	SECTION	COUNTY	TOTAL SHEETS	SHEET NO.
320		MACON	31	2
STA.		TO STA.		
FED. ROAD DIST. NO.		ILLINOIS FED. AID PROJECT		
• (101)RS-3, 101B-1				

GENERAL NOTES

THIS SECTION SHALL BE CONSTRUCTED IN ACCORDANCE WITH THE PLANS, THE "STANDARD SPECIFICATIONS FOR ROAD AND BRIDGE CONSTRUCTION", ADOPTED BY JANUARY 1, 2007; THE "SUPPLEMENTAL SPECIFICATIONS AND RECURRING SPECIAL PROVISIONS" INDICATED ON THE CHECK SHEET, AND THE "THE SPECIAL PROVISIONS" INCLUDED IN THE PROPOSAL.

THIS PROJECT IS LOCATED ON ILLINOIS ROUTE 121 IN MACON COUNTY, FROM DALTON CITY TO MOUNT ZION. THE WORK INCLUDED IN SECTION (101)RS-3, 101 B-1 CONSISTS OF BOX CULVERT REPLACEMENT, PIPE CULVERT PLACEMENT, PAVEMENT PATCHING, MILLING, HOT MIX ASPHALT RESURFACING, AGGREGATE SHOULDERS, PAVEMENT MARKING, AND OTHER WORK NECESSARY TO COMPLETE THE SECTION.

PAVEMENT MARKING SHALL BE APPLIED IN ACCORDANCE WITH SECTION 780 OF THE STANDARD SPECIFICATIONS. SHORT TERM PAVEMENT MARKING SHALL BE APPLIED TO THE MILLED SURFACE, BITUMINOUS MATERIALS (PRIME COAT), LEVEL BINDER, AND HOT MIX ASPHALT SURFACE COURSE AS SPECIFIED IN SECTION 703 OF THE STANDARD SPECIFICATIONS. TEMPORARY TAPE SHALL BE USED ON THE BINDER AND SURFACE COURSE AND PAINT SHALL BE USED ON MILLED SURFACE.

THE TOTAL QUANTITY OF PAINT PAVEMENT MARKING-LINE 4 INCH CONSISTS OF 7865 FEET OF YELLOW AND 45275 FEET OF WHITE.

THE TOTAL QUANTITY OF RAISED REFLECTIVE PAVEMENT MARKERS IS 283 TWO-WAY AMBER.

THE MATERIAL USED FOR AGGREGATE SHOULDERS, TYPE B SHALL BE CRUSHED STONE, CRUSHED CONCRETE OR RAP.

THE MATERIAL USED FOR AGGREGATE SURFACE COURSE, TYPE B SHALL BE CRUSHED STONE OR CRUSHED CONCRETE.

ANY EARTHWORK REQUIRED TO MAINTAIN FLOW SHALL BE INCLUDED IN THE COST OF THE BOX CULVERT AND PIPE CULVERT.

THE EXISTING PAVEMENT SHALL BE PATCHED IN ACCORDANCE WITH SECTION 442 OF THE STANDARD SPECIFICATIONS AND THE SPECIAL PROVISIONS. THE QUANTITY OF PATCHING SHOWN ON THE PLANS IS AN ESTIMATE ONLY AND THE FINAL LOCATIONS AND QUANTITY SHALL BE DETERMINED BY THE ENGINEER IN THE FIELD. ALL PATCHING OPERATIONS SHALL BE COMPLETED BEFORE ANY MILLING OPERATIONS BEGIN.

BITUMINOUS MATERIALS (PRIME COAT) SHALL BE EITHER RC-70 OR AN EMULSIFIED POLYMER PRIME SS-1HP.

THE CONTRACTOR SHALL PROVIDE INTERNET ACCESS TO THE BITUMINOUS PLANT QUALITY CONTROL LAB SO THAT BITUMINOUS PLANT REPORTS CAN BE E-MAILED TO THE DISTRICT HEADQUARTERS. THIS WORK SHALL BE INCLUDED IN THE COST OF ALL BITUMINOUS ITEMS.

THE RESIDENT ENGINEER SHALL BE THE SOLE JUDGE CONCERNING THE CURING TIME FOR THE VARIOUS BITUMINOUS LIFTS.

THE FOLLOWING MIXTURE REQUIREMENTS ARE APPLICABLE FOR THIS PROJECT:

MIXTURE USE: PAVEMENT PATCHING - OVER BOX CULVERT
 PG GRADE: PG 64-22
 RAP %: 15% Max.
 DESIGN AIR VOIDS: 4.0% @ NDESIGN = 70
 MIXTURE COMPOSITION: IL-19.0
 FRICTION AGGREGATE: N/A

MIXTURE USE: PAVEMENT PATCHING - CLASS D - 12"
 PG GRADE: PG 64-22
 RAP %: 15% Max.
 DESIGN AIR VOIDS: 4.0% @ NDESIGN = 70
 MIXTURE COMPOSITION: IL-19.0
 FRICTION AGGREGATE: N/A

MIXTURE USE: LEVEL BINDER - 3/4"
 PG GRADE: PG 64-22
 RAP %: 15% Max.
 DESIGN AIR VOIDS: 4.0% @ NDESIGN = 70
 MIXTURE COMPOSITION: IL-9.5
 FRICTION AGGREGATE: N/A

MIXTURE USE: SURFACE COURSE - 1-1/2"
 PG GRADE: PG 64-22
 RAP %: 10% Max.
 DESIGN AIR VOIDS: 4.0% @ NDESIGN = 70
 MIXTURE COMPOSITION: IL-9.5
 FRICTION AGGREGATE: Mixture D

MIXTURE USE: INCIDENTAL HOT MIX ASPHALT (DRIVEWAYS)
 PG GRADE: PG 64-22
 RAP %: 15% Max.
 DESIGN AIR VOIDS: 4.0% @ NDESIGN = 50
 MIXTURE COMPOSITION: IL-9.5
 FRICTION AGGREGATE: Mixture C

MIXTURE USE: BASE COURSE WIDENING
 PG GRADE: PG 64-22
 RAP %: 15% Max.
 DESIGN AIR VOIDS: 4.0% @ NDESIGN = 70
 MIXTURE COMPOSITION: IL-19.0
 FRICTION AGGREGATE: N/A

MIXTURE USE: SHOULDER STABILIZATION FOR GUARDRAIL
 PG GRADE: PG 58-22
 RAP %: Up to 50% Max.
 DESIGN AIR VOIDS: 2.0% @ Ndesign = 30
 MIXTURE COMPOSITION: N/A
 FRICTION AGGREGATE: N/A

THE FOLLOWING RATES OF APPLICATION HAVE BEEN USED IN CALCULATING PLAN QUANTITIES:

AGGREGATE SURFACE COURSE	2.05	TONS/CU YD
AGGREGATE SHOULDERS	2.05	TONS/CU YD
BITUMINOUS MATERIALS (PRIME COAT)	0.10	GAL/SQ YD
AGGREGATE (PRIME COAT)	4	LBS/SQ YD
INCIDENTAL HOT MIX ASPHALT	112	LBS/SQ YD/INCH
HOT-MIX ASPHALT		2.016 TONS/CU YD

INDEX OF SHEETS

SHEET NO.	DESCRIPTION
1	COVER SHEET
2	GENERAL NOTES & INDEX OF SHEETS
3	SUMMARY OF QUANTITIES
4-5	TYPICAL SECTIONS & BUTT JOINT DETAILS
6	SCHEDULES
7	ENTRANCE SCHEDULE
8-22	PLAN SHEETS
23-24	STAGE CONSTRUCTION SHEETS
25-30	BOX CULVERT DETAILS
31	CULVERT DETAILS

STD. NO.	DESCRIPTION
000001-04	STANDARD SYMBOLS, ABBREVIATIONS, PATTERNS
001006	DECIMAL OF AN INCH AND OF A FOOT
406201	MAILBOX TURNOUT
442201-02	CLASS C AND D PATCHES
515001-02	NAME PLATE FOR BRIDGES
542306-01	PRECAST REINFORCED CONCRETE ELLIPTICAL FLAED END SECTION
542311	GRATING FOR CONCRETE FLARED END SECTION
602301-01	INLET, TYPE A
604001-02	FRAME AND LIDS, TYPE 1
630001-07	STEEL PLATE BEAM GUARDRAIL
630101-07	GUARDRAIL MOUNTED ON EXISTING CULVERTS
630301-04	SHOULDER WIDENING FOR TYPE 1 (SPECIAL) GUARDRAIL TERMINALS
635006-02	REFLECTOR AND TERMINAL MARKER PLACEMENT
635011-01	REFLECTOR MARKER AND MOUNTING DETAILS
667101	PERMANENT SURVEY MARKERS
701006-02	OFF-RD OPERATIONS, 2L, 2W, 15' TO 24" FROM PAVEMENT EDGE
701011-01	OFF-RD MOVING OPERATIONS, 2L, 2W, DAY ONLY
701201-02	LANE CLOSURE, 2L, 2W, DAY ONLY, FOR SPEEDS > 45 MPH
701301-02	LANE CLOSURE, 2L, 2W, SHORT TIME OPERATIONS
701306-01	LANE CLOSURE, 2L, 2W SLOW MOVING OPERATIONS DAY ONLY
701311-02	LANE CLOSURE, 2L, 2W MOVING OPERATIONS DAY ONLY
701321-08	LANE CLOSURE, 2L, 2W BRIDGE REPAIR BARRIER
701326-02	LANE CLOSURE, 2L, 2W, PAVEMENT WIDENING
701336-04	LANE CLOSURE, 2L, 2W, WORK AREAS IN SERIES, FOR SPEEDS > 45 MPH
704001-03	TEMPORARY CONCRETE BARRIER
702001-06	TRAFFIC CONTROL DEVICES
780001-01	TYPICAL PAVEMENT MARKINGS
781001-02	TYPICAL APPLICATIONS RAISED REFLECTIVE PAVEMENT MARKERS

PLOT DATE = 2/13/2007
 FILE NAME = G:\proj\74225\Autoconvr-74225.dgn
 PLOT SCALE = 1/8" = 1'-0"
 USER NAME = tsaligok

REVISIONS		ILLINOIS DEPARTMENT OF TRANSPORTATION
NAME	DATE	
		GENERAL NOTES AND INDEX OF SHEETS

SCALE: VERT. _____
 HORIZ. _____
 DATE _____ DRAWN BY _____
 CHECKED BY _____

F.A.P. RTE.	SECTION	COUNTY	TOTAL SHEETS	SHEET NO.
320		MACON	31	3
STA.	TO STA.			
FED. ROAD DIST. NO.	ILLINOIS	FED. AID PROJECT		
(10)RS-3, 101B-1				

SUMMARY OF QUANTITIES

SUMMARY OF QUANTITIES			80% FED. 20% STATE TOTAL QUANTITIES	CONSTRUCTION TYPE CODE		
CODE NO	ITEM	UNIT		1000 RURAL	1000 URBAN	X028-2A
20200500	EARTH EXCAVATION (WIDENING)	CU YD	24	24		
20800150	TRENCH BACKFILL	CU YD	10	10		
28100207	STONE RIPRAP, CLASS A4	TON	57	57		
28200200	FILTER FABRIC	SQ YD	88	88		
35650500	BASE COURSE WIDENING 10"	SQ YD	256	256		
40200800	AGGREGATE SURFACE COURSE, TYPE B	TON	62	62		
40600100	BITUMINOUS MATERIALS (PRIME COAT)	GALLON	16096	14570	1526	
40600300	AGGREGATE (PRIME COAT)	TON	322	291	31	
40600635	LEVELING BINDER (MACHINE METHOD), N70	TON	3380	3060	320	
40600895	CONSTRUCTING TEST STRIP	EACH	1	1		
40600982	HOT-MIX ASPHALT SURFACE REMOVAL - BUTT JOINT	SQ YD	320	160	160	
40600985	PORTLAND CEMENT CONCRETE SURFACE REMOVAL - BUTT JOINT	SQ YD	99		99	
40600990	TEMPORARY RAMP	SQ YD	56	28	28	
40603340	HOT-MIX ASPHALT SURFACE COURSE, MIX "D", N70	TON	6760	6119	641	
40800050	INCIDENTAL HOT-MIX ASPHALT SURFACING	TON	75	53	22	
44000151	HOT-MIX ASPHALT SURFACE REMOVAL, 1/2"	SQ YD	80354	72850	7504	
44004250	PAVED SHOULDER REMOVAL	SQ YD	256	256		
44200124	PAVEMENT PATCHING, TYPE III, 10 INCH	SQ YD	32	32		
44200140	PAVEMENT PATCHING, TYPE I, 12 INCH	SQ YD	39	20	19	
44200144	PAVEMENT PATCHING, TYPE II, 12 INCH	SQ YD	436	388	48	
44200148	PAVEMENT PATCHING, TYPE III, 12 INCH	SQ YD	133	133		
44200150	PAVEMENT PATCHING, TYPE IV, 12 INCH	SQ YD	283	251	32	
48101200	AGGREGATE SHOULDERS, TYPE B	TON	1367	1245	122	
48203021	HOT-MIX ASPHALT SHOULDERS, 6"	SQ YD	369	369		
50100100	REMOVAL OF EXISTING STRUCTURES	EACH	1		1	
51500100	NAME PLATES	EACH	1		1	
54000900	BOX CULVERT END SECTIONS, SPECIAL	EACH	2		2	
54021204	PRECAST CONCRETE BOX CULVERT 12' X 4' (M273)	FOOT	70		70	
54214299	END SECTIONS, EQUIVALENT ROUND-SIZE 24"	EACH	4	4		
542A5479	PIPE CULVERTS, CLASS A, TYPE 1 EQUIVALENT ROUND-SIZE 24"	FOOT	80	80		
60234200	INLETS, TYPE A, TYPE 1 FRAME, OPEN LID	EACH	1	1		
60500060	REMOVING INLETS	EACH	1	1		
* 63000000	STEEL PLATE BEAM GUARD RAIL, TYPE A	FOOT	112	112		
* 63000025	STEEL PLATE BEAM GUARD RAIL, ATTACHED TO STRUCTURES	FOOT	63	63		

SUMMARY OF QUANTITIES			80% FED. 20% STATE TOTAL QUANTITIES	CONSTRUCTION TYPE CODE		
CODE NO	ITEM	UNIT		1000 RURAL	1000 URBAN	X028-2A
* 63100167	TRAFFIC BARRIER TERMINAL TYPE 1, SPECIAL (TANGENT)	EACH	4	4		
63200310	GUARDRAIL REMOVAL	FOOT	403	403		
66700205	PERMANENT SURVEY MARKERS, TYPE I	EACH	11	9	2	
67000400	ENGINEER'S FIELD OFFICE, TYPE A	CAL MO	3	3		
67100100	MOBILIZATION	L SUM	1	0.5	0.5	
70100405	TRAFFIC CONTROL AND PROTECTION, STANDARD 701321	EACH	1	1		
70100450	TRAFFIC CONTROL AND PROTECTION, STANDARD 701201	L SUM	1	0.9	0.1	
70100460	TRAFFIC CONTROL AND PROTECTION, STANDARD 701306	L SUM	1	0.9	0.1	
70100500	TRAFFIC CONTROL AND PROTECTION, STANDARD 701326	L SUM	1	1		
70100600	TRAFFIC CONTROL AND PROTECTION, STANDARD 701336	L SUM	1	0.9	0.1	
70106500	TEMPORARY BRIDGE TRAFFIC SIGNALS	EACH	1	1		
70300100	SHORT-TERM PAVEMENT MARKING	FOOT	6792	6147	645	
70301000	WORK ZONE PAVEMENT MARKING REMOVAL	SQ FT	1412	1341	71	
70400100	TEMPORARY CONCRETE BARRIER	FOOT	212	212		
70400200	RELOCATE TEMPORARY CONCRETE BARRIER	FOOT	212	212		
* 78001110	PAINT PAVEMENT MARKING - LINE 4"	FOOT	53134	46101	7033	
* 78100100	RAISED REFLECTIVE PAVEMENT MARKER	EACH	283	256	27	
* 78201000	TERMINAL MARKER - DIRECT APPLIED	EACH	4	4		
78300500	PAINT PAVEMENT MARKING REMOVAL	SQ FT	444	444		
X0322050	RAISED REFLECTIVE PAVEMENT MARKER, REFLECTOR REMOVAL	EACH	8	8		
X0323104	PAVEMENT PATCHING (PARTIAL DEPTH) TYPE 2	SQ YD	654	595	59	
78200410	GUARDRAIL MARKERS, TYPE A	EACH	8	8		
X0323988	TEMPORARY SOIL RETENTION SYSTEM	SQ FT	224		224	
X4421000	PARTIAL DEPTH PATCHING	TON	110	100	10	
X4422030	PARTIAL DEPTH REMOVAL 3"	SQ YD	654	595	59	
Z0030240	IMPACT ATTENUATORS, TEMPORARY (NON-REDIRECTIVE), TEST LEVEL 2	EACH	2		2	
Z0030340	IMPACT ATTENUATORS, RELOCATE (NON-REDIRECTIVE), TEST LEVEL 2	EACH	2		2	

PLOT DATE = 2/13/2007
 FILE NAME = c:\p\projects\74225\shashou\74225.dgn
 PLOT SCALE = 80.0000 / 1 IN.
 USER NAME = wssatgok

REVISIONS	
NAME	DATE

ILLINOIS DEPARTMENT OF TRANSPORTATION

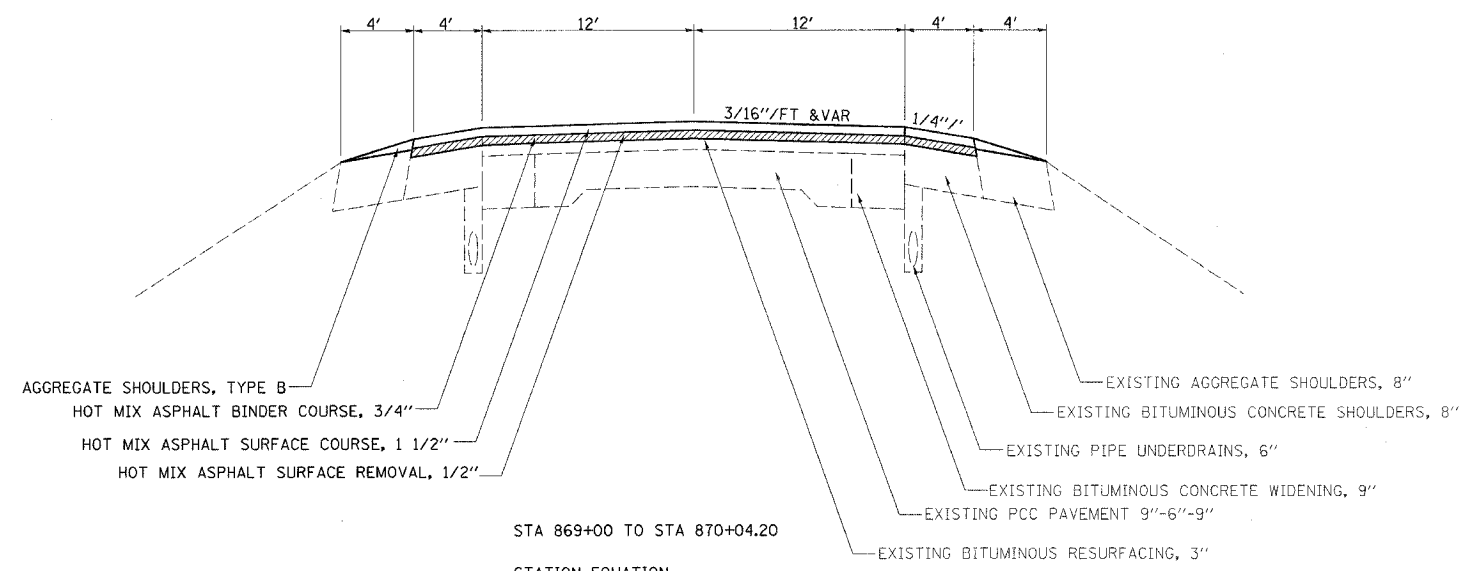
SUMMARY OF QUANTITIES

SCALE: VERT. _____
 DATE _____

DRAWN BY _____
 CHECKED BY _____

F.A.P. RTE.	SECTION	COUNTY	TOTAL SHEETS	SHEET NO.
320		MACON	31	4
STA.		TO STA.		
FED. ROAD DIST. NO.		ILLINOIS FED. AID PROJECT		

• (101)RS-3, 101B-1



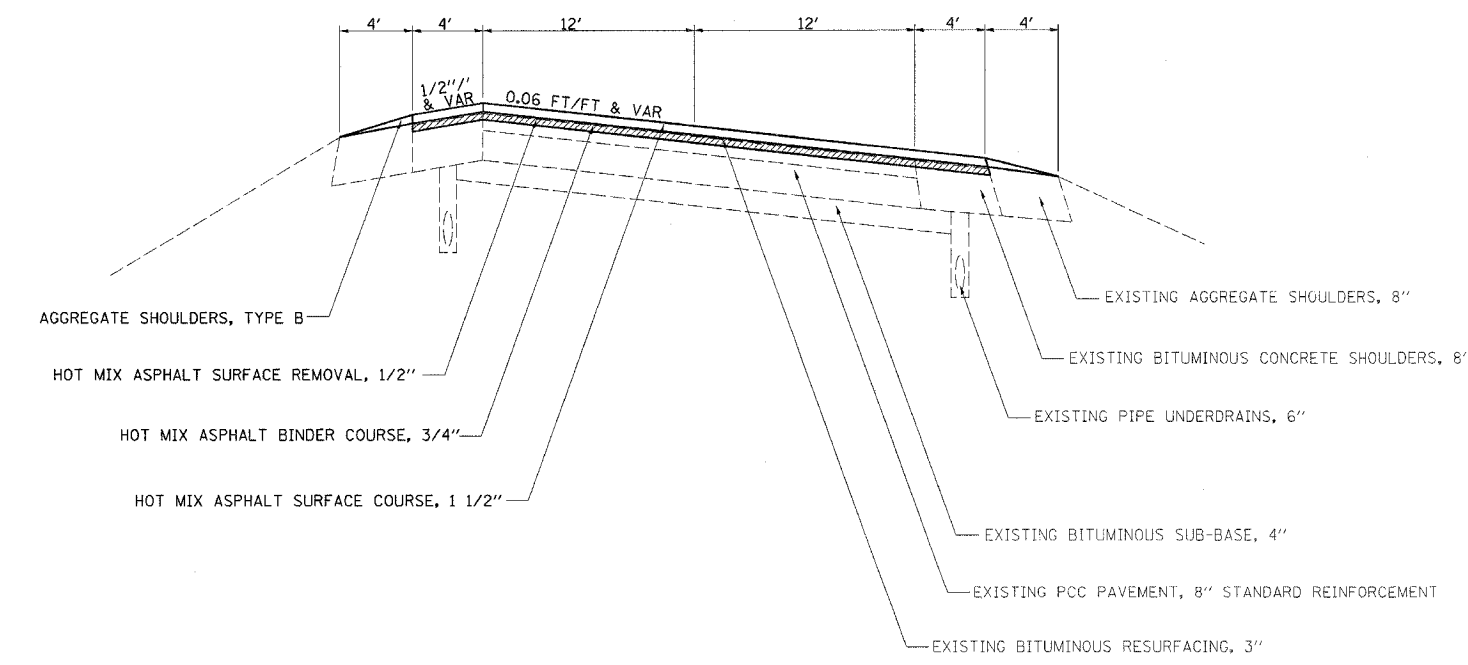
STA 869+00 TO STA 870+04.20

STATION EQUATION
STA 870+04.20BK = STA 60+44.79AH

STA 60+44.79 TO STA 194+59
STA 208+77 TO STA 236+89.79
STA 264+13 TO STA 264+13.49

STATION EQUATION
STA 264+13.49BK = STA 265+85.36AH

STA 265+85.36 TO STA 287+31.6



STA 194+59 TO STA 208+77

NOTE: THE ALGEBRAIC DIFFERENCE BETWEEN THE PAVEMENT AND SHOULDER SLOPES SHALL NOT EXCEED 0.08 FT/FT

REVISIONS	
NAME	DATE

ILLINOIS DEPARTMENT OF TRANSPORTATION

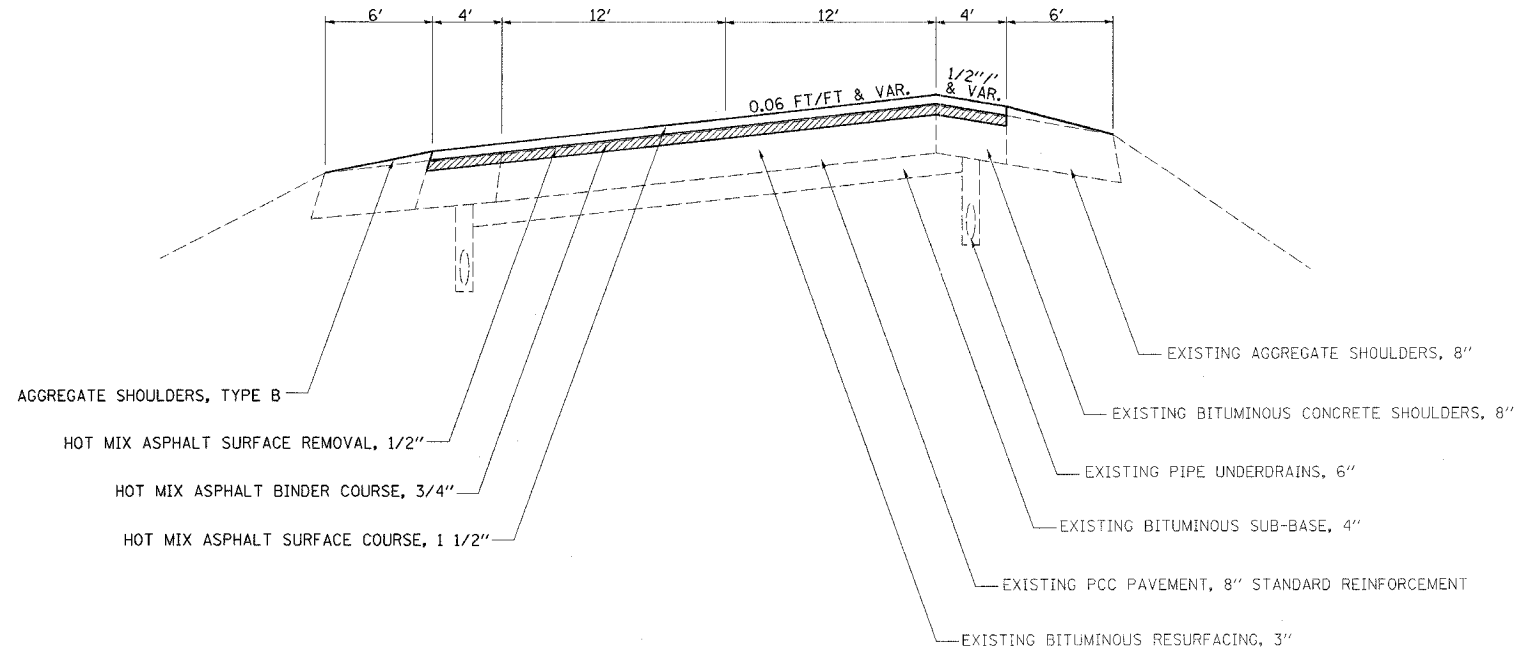
TYPICAL SECTIONS

SCALE: VERT. _____
HORIZ. _____

DATE _____ DRAWN BY _____
CHECKED BY _____

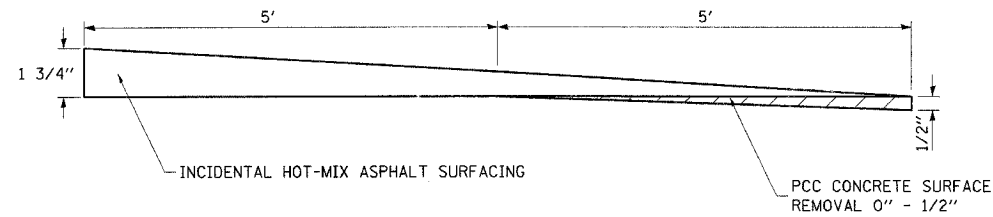
PLOT DATE = 2/13/2007
FILE NAME = c:\pvc\pca\74225\h\typical.74225.dgn
PLOT SCALE = 5/8"=1' / IN.
USER NAME = tnealegk

F.A.P. RTE.	SECTION	COUNTY	TOTAL SHEETS	SHEET NO.
320		MACON	31	5
STA.		TO STA.		
FED. ROAD DIST. NO.		ILLINOIS FED. AID PROJECT		
• (10)RS-3, 101B-1				

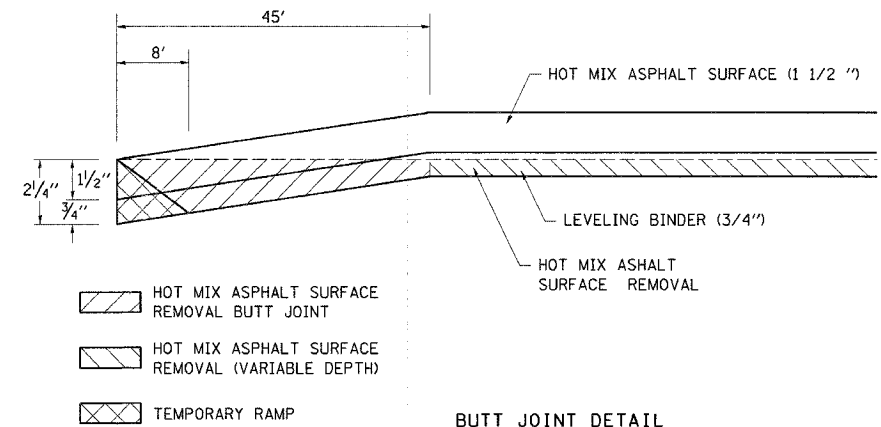


STATION EQUATION
 STA 236+89.79BK = STA 236+7.58AH
 STA 236+73.58 TO STA 264+13.49

NOTE: THE ALGEBRAIC DIFFERENCE BETWEEN THE PAVEMENT AND SHOULDER SLOPES SHALL NOT EXCEED 0.08 FT/FT



BUTT JOINT DETAIL
 STA 274+60 RT



BUTT JOINT DETAIL
 STA 869+04.2 TO STA 869+49.2
 STA 286+86.55 TO STA 287+31.55

REVISIONS	
NAME	DATE

ILLINOIS DEPARTMENT OF TRANSPORTATION
TYPICAL SECTIONS & BUTT JOINT DETAILS

SCALE: VERT. _____
 HORIZ. _____
 DATE _____ DRAWN BY _____
 CHECKED BY _____

PLOT DATE = 2/13/2007
 FILE NAME = c:\p\proj\mva\4225d\hwy\p\seal\74225.dgn
 PLOT SCALE = 50/2000 / IN
 USER NAME = wongjgk

F.A.P. RTE.	SECTION	COUNTY	TOTAL SHEETS	SHEET NO.
320	•	MACON	31	6
STA.		TO STA.		
FED. ROAD DIST. NO.		ILLINOIS	FED. AID PROJECT	
• (10)RS-3, 101B-1				

PAVING SCHEDULE

STATION TO STATION	LENGTH	PAVEMENT WIDTH	AREA	BITUMINOUS MATERIALS (PRIME COAT)	AGGREGATE (PRIME COAT)	LEVELING BINDER (MACHINE METHOD), N70	HOT-MIX ASPHALT SURF. CSE MIX "D", N70	HOT-MIX ASPHALT SURFACE REMOVAL, 1/2"	HOT-MIX ASPHALT SURFACE REMOVAL - BUTT JOINT	TEMPORARY RAMP	AGGREGATE SHOULDERS, TYPE B
	FEET	FEET	SQ YD	GALLON	TON	TON	TON	SQ YD	SQ YD	SQ YD	TON
RURAL											
STATION TO STATION											
869+00 TO 870+04	104.2	32	370.5	74.1	1.5	15.6	31.1	370.5	160.0	28.0	5.9
60+45 TO 236+90	17645.0	32	62737.8	12547.6	251.0	2635.0	5270.0	62737.8			1004.8
236+74 TO 264+13	2739.9	32	9741.9	1948.4	39.0	409.2	818.3	9741.9			234.0
URBAN											
265+85 TO 287+32	2146.2	32	7630.9	1526.2	30.5	320.5	641.0	7503.8	160.0	28.0	122.2
TOTALS	22635.3		80481	16096	322	3380	6760	80354	320	56	1367

PAVEMENT MARKING SCHEDULE

STATION TO STATION	LENGTH	SHORT TERM PAVEMENT MARKING	WORK ZONE PAVEMENT MARKING REMOVAL	PAINT PAVEMENT MARKING-LINE 4"	RAISED REFLECTIVE PAVEMENT MARKER	RAISED REFLECTIVE PAVEMENT MARKER, REFLECTOR, REMOVAL	PAINT PAVEMENT MARKING REMOVAL
	FEET	FT	SQ FT	FT	EA	EA	SQ FT
RURAL							
STATION TO STATION							
869+00 TO 870+04	104	31	3	234	1		
60+45 TO 236+90	17645	5294	1247	39701	221	8	444
236+74 TO 264+13	2740	822	91	6165	34		
URBAN							
265+85 TO 287+32	2146	645	71	7033	27		
TOTALS	22635	6792	1412	53134	283	8	444

PATCHING SCHEDULE

LOCATION	PARTIAL DEPTH PATCHING	PARTIAL DEPTH REMOVAL, 3"	PAVEMENT PATCHING, TYPE III, 10 INCH	PAVEMENT PATCHING, TYPE I, 12 INCH	PAVEMENT PATCHING, TYPE II, 12 INCH	PAVEMENT PATCHING, TYPE III, 12 INCH	PAVEMENT PATCHING, TYPE IV, 12 INCH
	TON	SQ YD	SQ YD	SQ YD	SQ YD	SQ YD	SQ YD
URBAN: WB	0.0	0.0	0.0	0.0	48.0	0.0	32.0
URBAN: EB	0.0	0.0	0.0	0.0	0.0	0.0	
RURAL: WB	0.1	347.0	16.0	20.0	222.7	117.3	158.0
RURAL: EB	0.1	306.7	16.0	18.7	165.3	16.0	93.3
TOTALS	0.16	654	32	39	436	133	283

PIPE CULVERT SCHEDULE

STATION	LENGTH	PIPE CULVERT, CLASS A, TY 1, ERS 24"	END SECTION, ERS 24"	TRENCH BACKFILL
	FEET	FT	EACH	CU YD
124+70 TO 168+65	40	40	2	5.0
	40	40	2	5.0
TOTALS	80	80	4	10.0

REVISIONS	
NAME	DATE

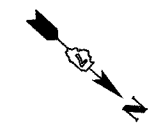
ILLINOIS DEPARTMENT OF TRANSPORTATION

SCHEDULES

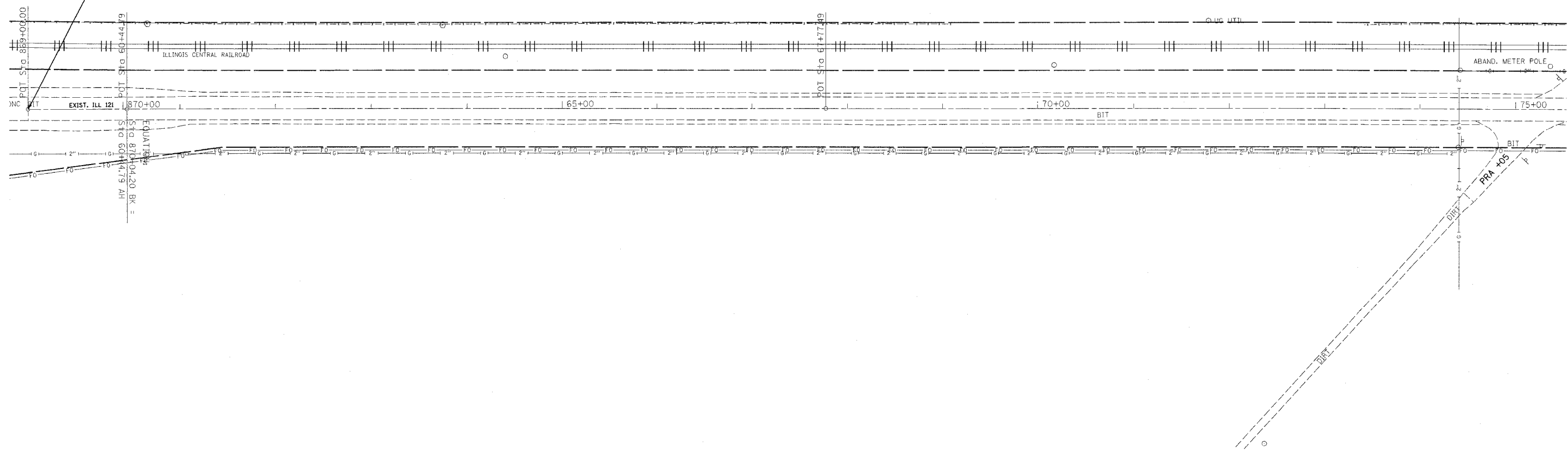
SCALE: VERT.
HORIZ.
DATE

DRAWN BY
CHECKED BY

F.A.P. RTE.	SECTION	COUNTY	TOTAL SHEETS	SHEET NO.
320		MACON	31	8
STA.	TO STA.			
FED. ROAD DIST. NO.	ILLINOIS	FED. AID PROJECT		
• (101)RS-3, 101B-1				



PROJECT BEGINS
STA 869+00



PLOT DATE = *DATE*
 FILE NAME = *FILE*
 PLOT SCALE = *SCALE*
 USER NAME = *USER*

REVISIONS	
NAME	DATE

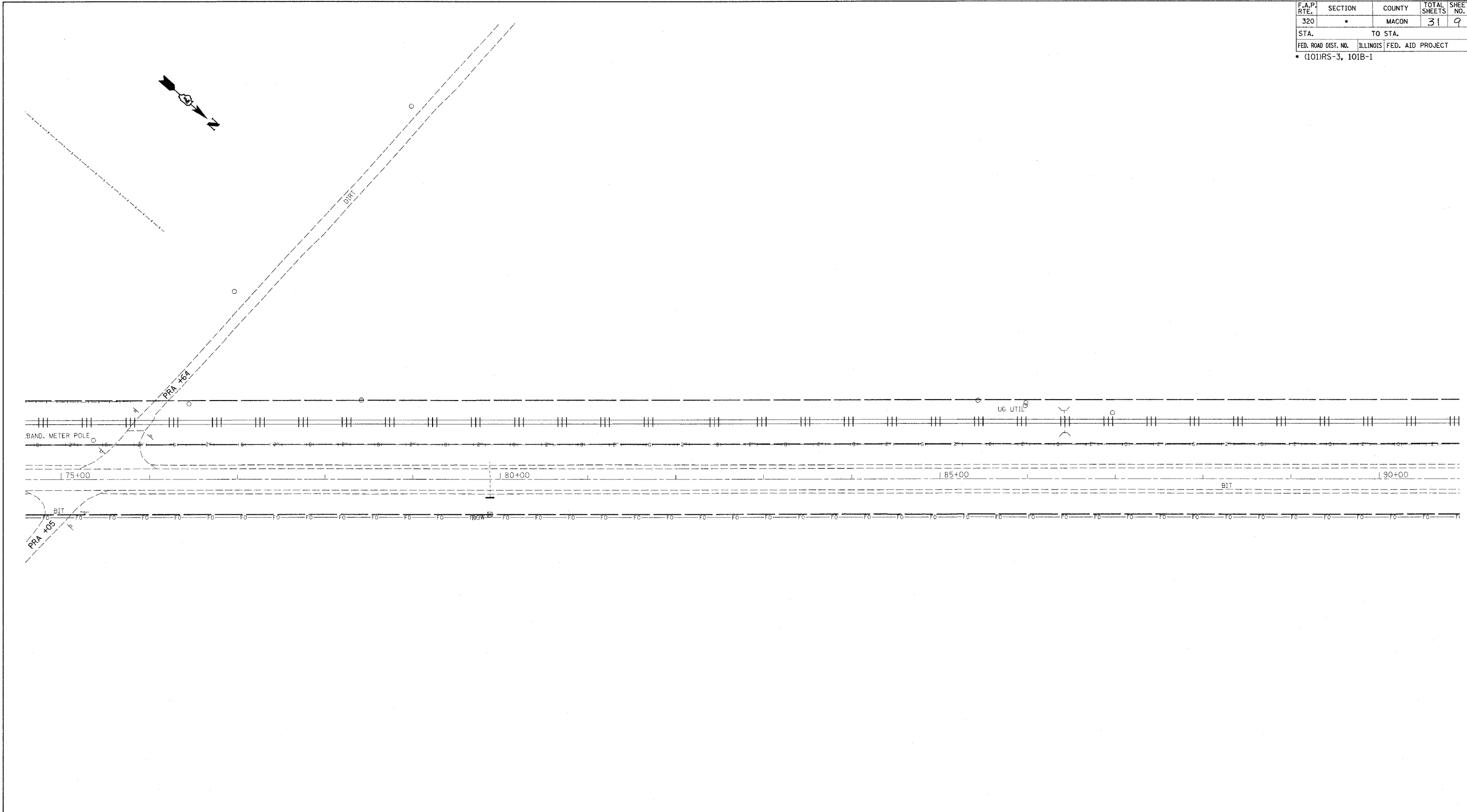
ILLINOIS DEPARTMENT OF TRANSPORTATION

PLAN SHEET
STA 869+00 TO STA 75+00

SCALE: VERT. _____
 HORIZ. _____

DATE _____ DRAWN BY _____
 CHECKED BY _____

F.A.P. RTE.	SECTION	COUNTY	TOTAL SHEETS	SHEET NO.
320		MACON	31	9
STA.	TO STA.			
FED. ROAD DIST. NO.	ILLINOIS	FED. AID PROJECT		
(101)RS-3, 101B-1				



PLOT DATE = **DATE**
 FILE NAME = **FILE**
 PLOT SCALE = **SCALE**
 USER NAME = **USER**

REVISIONS	
NAME	DATE

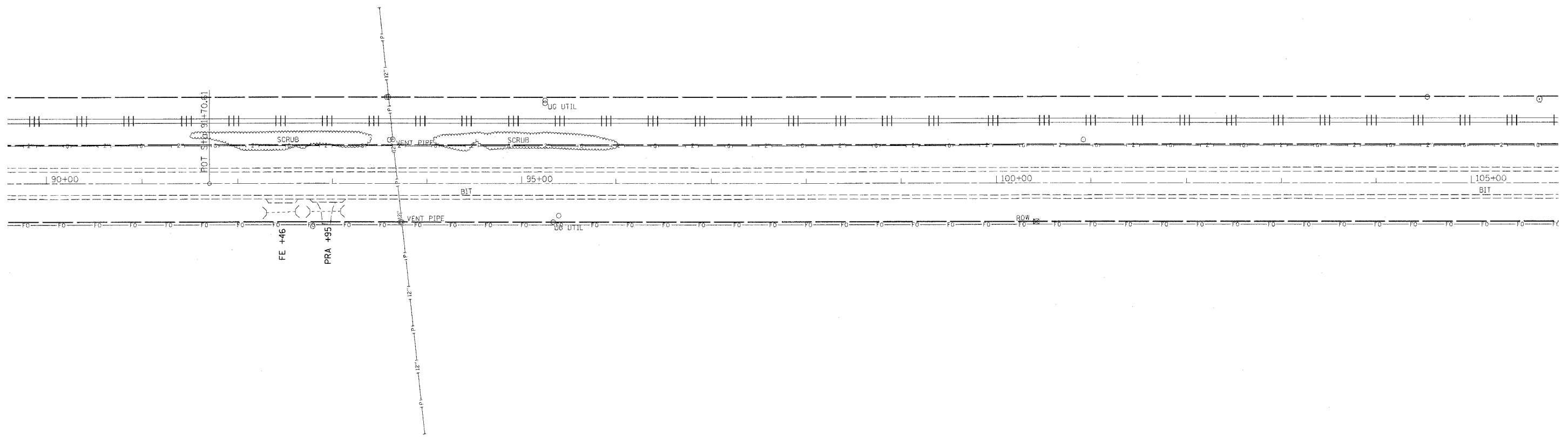
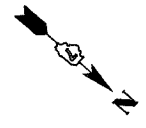
ILLINOIS DEPARTMENT OF TRANSPORTATION

PLAN SHEET
STA 75+00 TO STA 90+00

SCALE: VERT. _____
 HORIZ. _____

DATE _____ DRAWN BY _____
 CHECKED BY _____

F.A.P. RTE.	SECTION	COUNTY	TOTAL SHEETS	SHEET NO.
320		MACON	31	10
STA.	TO STA.			
FED. ROAD DIST. NO.	ILLINOIS	FED. AID PROJECT		
• (101)RS-3, 101B-1				



PLOT DATE = #DATE#
 FILE NAME = #FILE#
 PLOT SCALE = #SCALE#
 USER NAME = #USER#

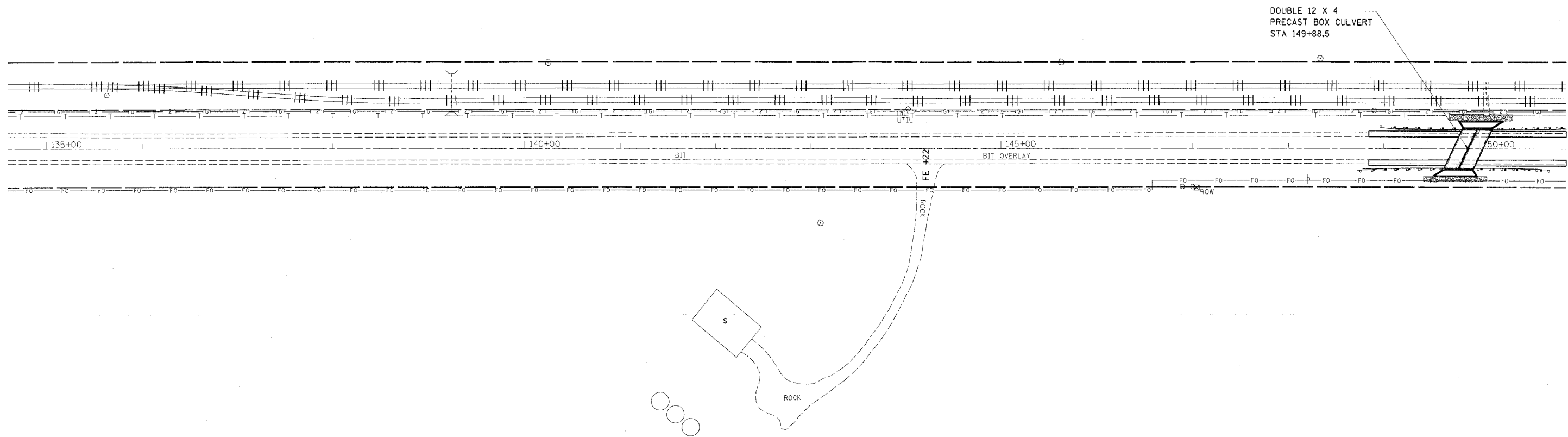
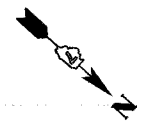
REVISIONS	
NAME	DATE

ILLINOIS DEPARTMENT OF TRANSPORTATION

PLAN SHEET
STA 90+00 TO STA 105+00

SCALE: VERT. _____
 HORIZ. _____
 DATE _____
 DRAWN BY _____
 CHECKED BY _____

F.A.P. RTE.	SECTION	COUNTY	TOTAL SHEETS	SHEET NO.
320		MACON	31	13
STA.	TO STA.			
FED. ROAD DIST. NO.	ILLINOIS	FED. AID PROJECT		
• (10)RS-3, 101B-1				



DOUBLE 12 X 4
PRECAST BOX CULVERT
STA 149+88.5

PLOT DATE * * *
FILE NAME * * *
PLOT SCALE * * *
USER NAME * * *

REVISIONS	
NAME	DATE

ILLINOIS DEPARTMENT OF TRANSPORTATION

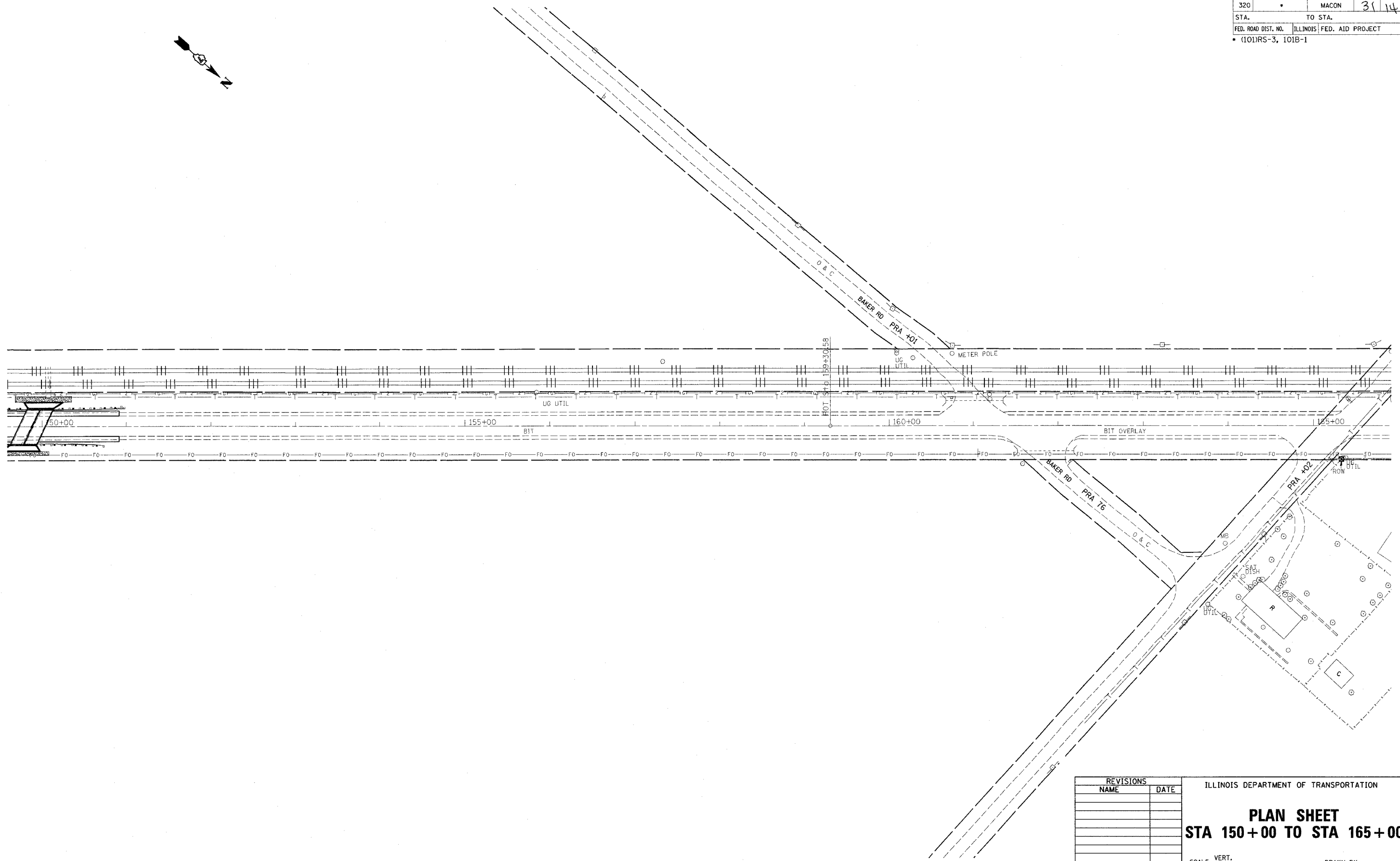
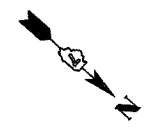
PLAN SHEET
STA 135+00 TO STA 150+00

SCALE: VERT. _____
HORIZ. _____

DATE _____

DRAWN BY _____
CHECKED BY _____

F.A.P. RTE.	SECTION	COUNTY	TOTAL SHEETS	SHEET NO.
320		MACON	31	14
STA.	TO STA.			
FED. ROAD DIST. NO.	ILLINOIS FED. AID PROJECT			
• (10)RS-3, 101B-1				



* PLOT DATE *
 * FILE NAME *
 * PLOT SCALE *
 * USER NAME *

REVISIONS	
NAME	DATE

ILLINOIS DEPARTMENT OF TRANSPORTATION

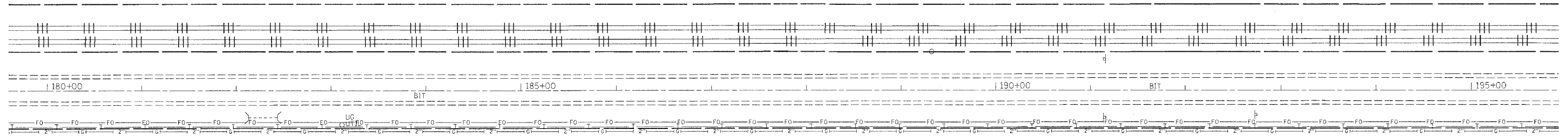
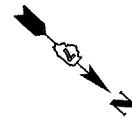
PLAN SHEET
STA 150+00 TO STA 165+00

SCALE: VERT. _____
 HORIZ. _____

DATE _____ DRAWN BY _____
 CHECKED BY _____

F.A.P. RTE.	SECTION	COUNTY	TOTAL SHEETS	SHEET NO.
320		MACON	31	14
STA.	TO STA.			
FED. ROAD DIST. NO.	ILLINOIS FED. AID PROJECT			

• (10)RS-3, 101B-1



PLOT DATE = #DATE*
 FILE NAME = #FILE#*
 PLOT SCALE = #SCALE*
 USER NAME = #USER#

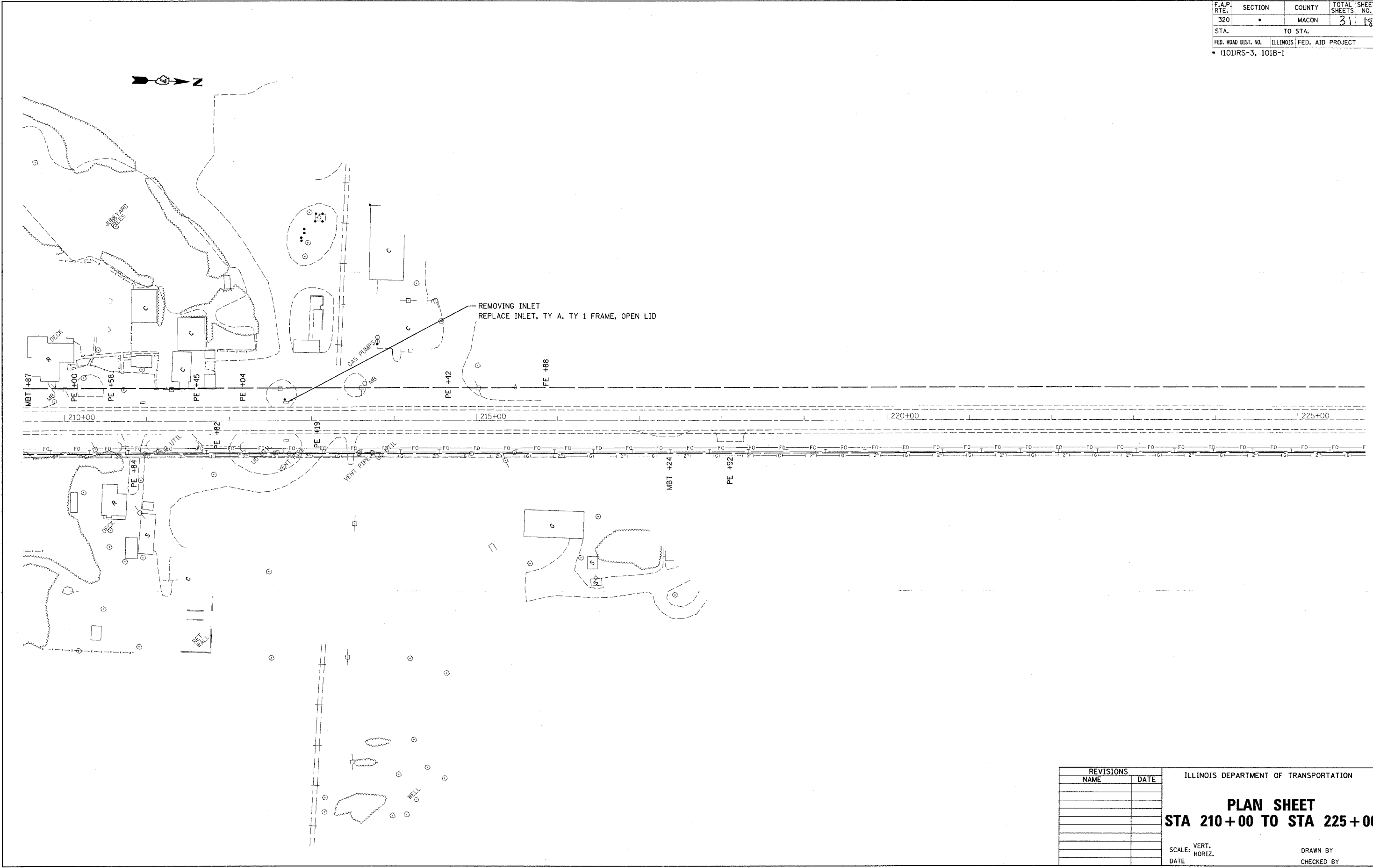
REVISIONS		ILLINOIS DEPARTMENT OF TRANSPORTATION	
NAME	DATE		

PLAN SHEET
STA 180+00 TO STA 195+00

SCALE: VERT. _____
 HORIZ. _____

DATE _____ DRAWN BY _____
 CHECKED BY _____

F.A.P. RTE.	SECTION	COUNTY	TOTAL SHEETS	SHEET NO.
320		MACON	31	18
STA.	TO STA.			
FED. ROAD DIST. NO.	ILLINOIS	FED. AID PROJECT		
(101)RS-3, 101B-1				



PLOT DATE = DATE*
 FILE NAME = FILE*
 PLOT SCALE = SCALE*
 USER NAME = USER*

REVISIONS	
NAME	DATE

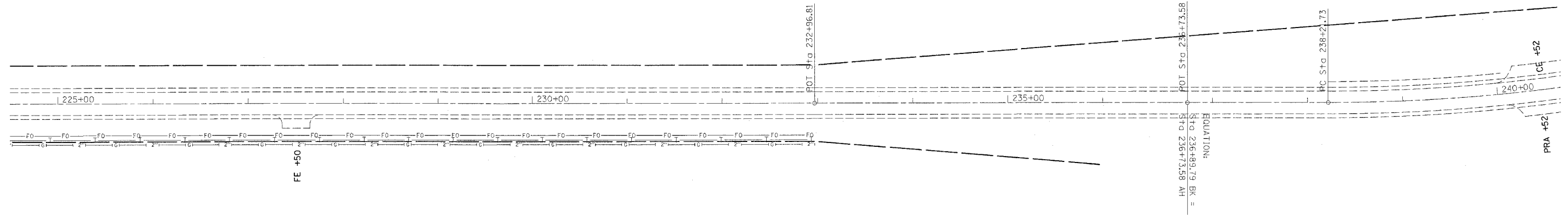
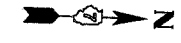
ILLINOIS DEPARTMENT OF TRANSPORTATION

PLAN SHEET
STA 210+00 TO STA 225+00

SCALE: VERT. _____
 HORIZ. _____

DATE _____ DRAWN BY _____
 CHECKED BY _____

F.A.P. RTE.	SECTION	COUNTY	TOTAL SHEETS	SHEET NO.
320	•	MACON	31	19
STA.	TO STA.			
FED. ROAD DIST. NO.	ILLINOIS	FED. AID PROJECT		
• (101)RS-3, 101B-1				



* DATE *
 * FILE *
 * PLOT SCALE *
 * USER *

REVISIONS	
NAME	DATE

ILLINOIS DEPARTMENT OF TRANSPORTATION

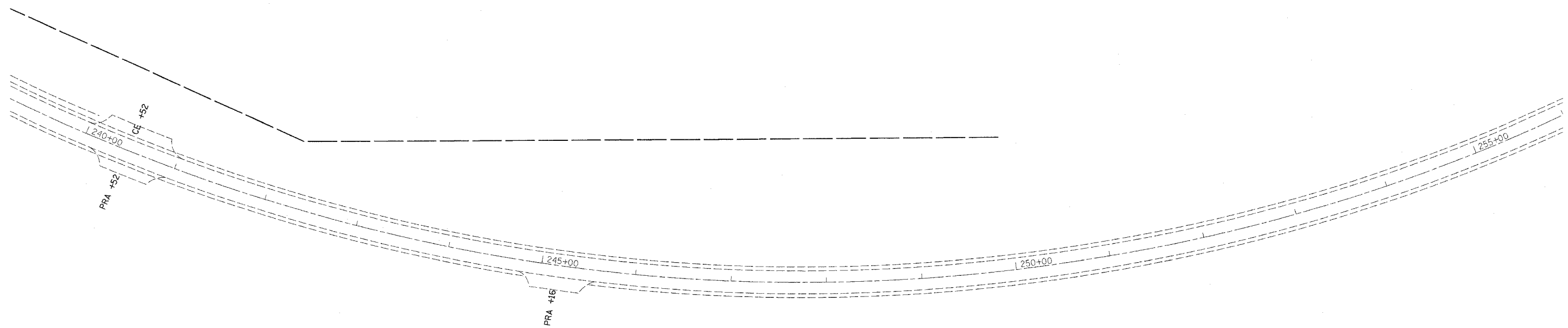
PLAN SHEET
STA 225+00 TO STA 240+00

SCALE: VERT. _____
 HORIZ. _____

DATE _____

DRAWN BY _____
 CHECKED BY _____

F.A.P. RTE.	SECTION	COUNTY	TOTAL SHEETS	SHEET NO.
320		MACON	31	20
STA.		TO STA.		
FED. ROAD DIST. NO.		ILLINOIS	FED. AID PROJECT	
* (101)RS-3, 101B-1				



EXIST. CURVE NEW121-2
 PI STA. = 252+38.19
 $\Delta = 73^\circ 09' 41''$ (L.T)
 $D = 3^\circ 00' 07''$
 $R = 1,908.61'$
 $T = 1,416.46'$
 $L = 2,437.12'$
 $E = 468.19'$
 $e = \text{-----}$
 $T.R. = \text{-----}$
 $S.E. \text{ RUN} = \text{-----}$
 $P.C. \text{ STA.} = 238+21.73$
 $P.T. \text{ STA.} = 262+58.85$

PLOT DATE = #DATE*
 PLOT NAME = #FILE*
 PLOT SCALE = #SCALE*
 USER NAME = #USER*

REVISIONS	
NAME	DATE

ILLINOIS DEPARTMENT OF TRANSPORTATION

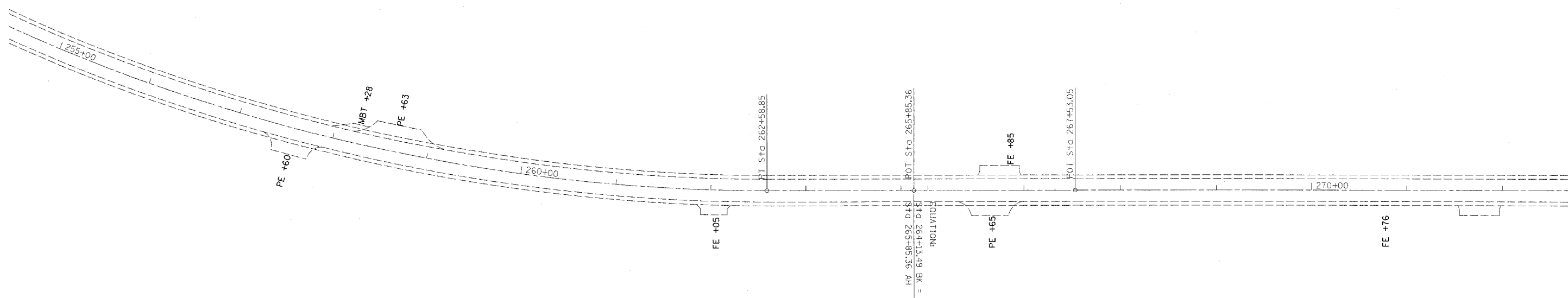
PLAN SHEET
STA 240+00 TO STA 255+00

SCALE: VERT. _____
 HORIZ. _____

DATE _____

DRAWN BY _____
 CHECKED BY _____

F.A.P. RTE.	SECTION	COUNTY	TOTAL SHEETS	SHEET NO.
320		MACON	31	21
STA.		TO STA.		
FED. ROAD DIST. NO.		ILLINOIS FED. AID PROJECT		
• (101)RS-3, 101B-1				



PLOT DATE = #DATE#
 FILE NAME = #FILE#
 PLOT SCALE = #SCALE#
 USER NAME = #USER#

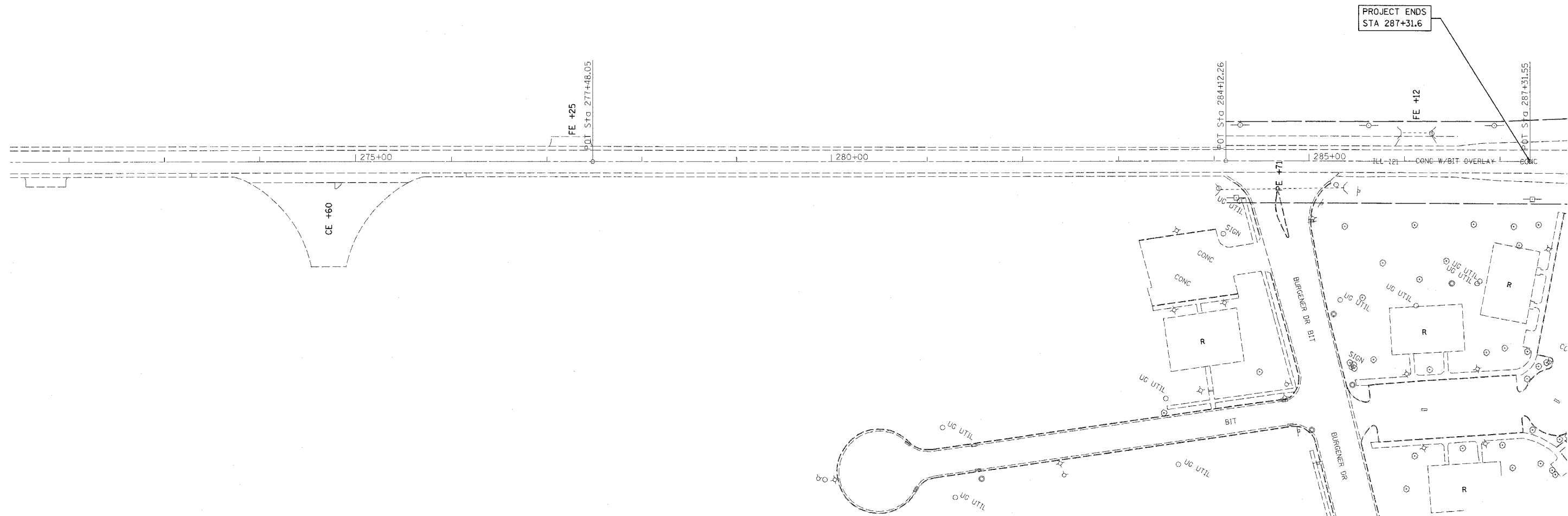
REVISIONS	
NAME	DATE

ILLINOIS DEPARTMENT OF TRANSPORTATION

PLAN SHEET
STA 255+00 TO STA 272+00

SCALE: VERT. _____
 HORIZ. _____
 DATE _____ DRAWN BY _____
 CHECKED BY _____

F.A.P. RTE.	SECTION	COUNTY	TOTAL SHEETS	SHEET NO.
320		MACON	31	27
STA.	TO STA.			
FED. ROAD DIST. NO.	ILLINOIS	FED. AID PROJECT		
(101)RS-3, 101B-1				



PLOT DATE = #DATE#
 FILE NAME = #FILE#
 PLOT SCALE = #SCALE#
 USER NAME = #USER#

REVISIONS	
NAME	DATE

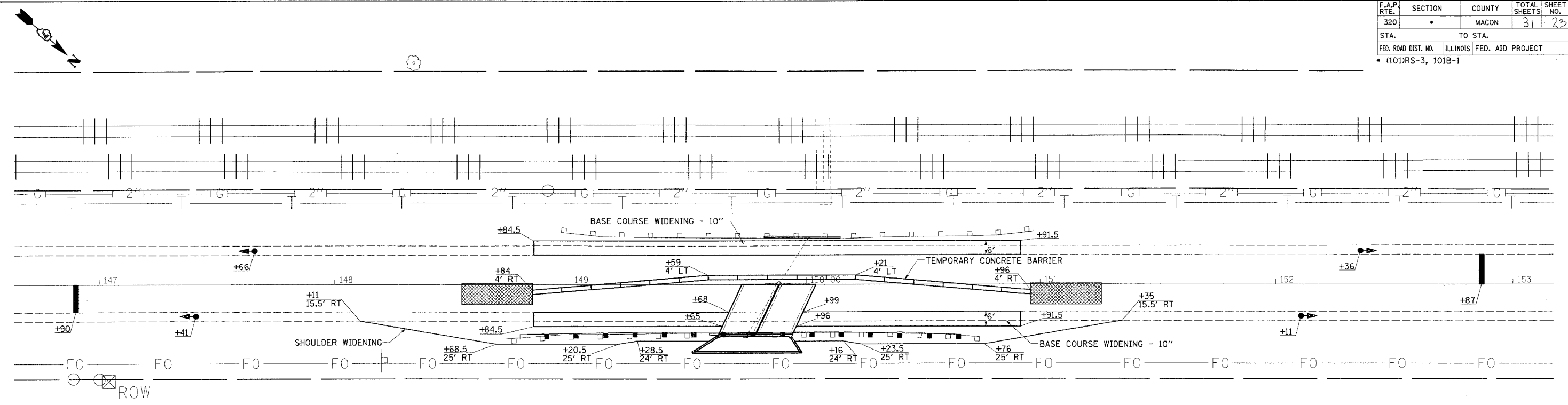
ILLINOIS DEPARTMENT OF TRANSPORTATION

PLAN SHEET
STA 272+00 TO STA 287+31

SCALE: VERT.
 DATE: HORIZ.

DRAWN BY
 CHECKED BY

F.A.P. RTE.	SECTION	COUNTY	TOTAL SHEETS	SHEET NO.
320		MACON	31	23
STA. TO STA.		FED. ROAD DIST. NO. ILLINOIS FED. AID PROJECT		
		* (101)RS-3, 101B-1		



HOT-MIX ASPHALT SHOULDERS, 6"

STATION	TO	STATION	SQ. YD.
148+11 RT	TO	151+35 RT	105
149+84 RT	TO	151+35 RT	91
TOTALS			196

REFLECTOR MARKERS, TYPE A

RT 149+28.5	TO	RT 150+16.0	4 EACH
TOTAL			4 EACH

REMOVAL OF EXISTING STRUCTURES

STATION	QUANTITY	UNIT
148+88.5	0.5	EACH

GUARDRAIL REMOVAL

RT 148+72.5	TO	RT 150+73.91	202 FOOT
TOTAL			202 FOOT

BASE COURSE WIDENING 10"

STA.	TO	STA.	SQ. YD.
LT 148+84.5	TO	150+91.5	138.0
RT 148+84.5	TO	149+66.5	54.7
RT 149+97.5	TO	150+91.5	62.7
TOTAL=			117.3

STEEL PLATE BEAM GUARD RAIL, TY A

Rt. 149+28.5	to	Rt. 150+16.0	87.5 FT
--------------	----	--------------	---------

EARTH EXCAVATION (WIDENING)

STA.	TO	STA.	CUL. YD.
LT 148+84.5	TO	LT 150+91.5	12.78
RT 148+84.5	TO	RT 149+66.5	5.06
RT 149+97.5	TO	RT 150+91.5	5.80
TOTAL			23.6

TERMINAL MARKER - DIRECT APPLIED

RT 148+78.5	1	EACH
RT 150+66.0	1	EACH
TOTAL		2 EACH

HOT-MIX ASPHALT SHOULDERS, 6"

STATION	TO	STATION	SQ. YD.
148+11 RT	TO	151+35 RT	105
149+84 RT	TO	151+35 RT	91
TOTALS			196

TRAFFIC BARRIER TERMINAL, TYPE 1 SPL (TANGENT)

RT. 148+78.5	TO	RT. 149+28.5	1 EACH
RT. 150+16.0	TO	RT. 150+66.0	1 EACH
TOTAL			2 EACH

FILTER FABRIC

LOCATION	LENGTH	WIDTH		SQ. YD.
		FT	FT	
149+88.5 RT	66	5	37	37
TOTAL				37

IMPACT ATTENUATORS (NON-REDIRECTIVE), TEST LEVEL II

STATION	QUANTITY
148+84.	1
150+96.	1
TOTAL	2 EACH

SUGGESTED SEQUENCE OF OPERATIONS - STAGE 1

1. CONSTRUCT BASE COURSE WIDENING ON STAGE 1 TRAFFIC SIDE USING TRAFFIC CONTROL PLAN.
2. INSTALL TRAFFIC CONTROL ACCORDING TO TRAFFIC CONTROL STANDARD 701321.
3. REMOVE STAGE 1 PORTION OF EXISTING STRUCTURE AND GUARDRAIL.
4. CONSTRUCT STAGE 1 PORTION OF NEW STRUCTURE
5. CONSTRUCT PAVEMENT PATCH
6. CONSTRUCT HOT MIX ASPHAL BASE COURSE ON STAGE 1 CONSTRUCTION SIDE.
7. CONSTRUCT SHOULDER WIDENING AND INSTALL GUARDRAIL.

PLOT DATE = 2/13/2007
 FILE NAME = c:\projects\74225\ah\plan_74225.dgn
 PLOT SCALE = 20.0000 / IN.
 USER NAME = teasteph

REVISIONS	
NAME	DATE

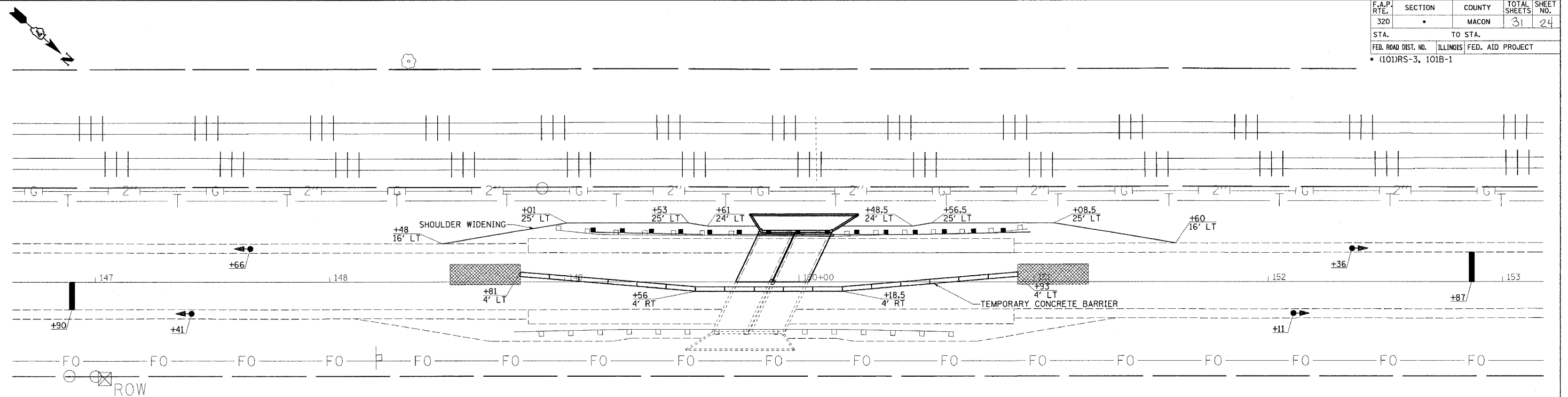
ILLINOIS DEPARTMENT OF TRANSPORTATION

STAGE 1 CONSTRUCTION
STA 146+90 TO STA 152+87

SCALE: VERT. / HORIZ.
 DATE

DRAWN BY
 CHECKED BY

F.A.P. RTE.	SECTION	COUNTY	TOTAL SHEETS	SHEET NO.
320		MACON	31	24
STA.	TO STA.			
FED. ROAD DIST. NO.	ILLINOIS FED. AID PROJECT			
	• (101)RS-3, 101B-1			



HOT MIX ASPHALT SHOULDERS, 6"

STATION	TO	STATION	SQ YD
148+48 LT	TO	149+63 LT	78
150+14 LT	TO	151+60 LT	95
Total			173

STONE RIPRAP, CLASS A4

LOCATION	LENGTH	WIDTH	THICKNESS	TON
	FT	FT	FT	
149+88.5 LT	66	7	1.33	33
TOTAL				33

REMOVAL OF EXISTING STRUCTURES

STATION	QUANTITY	UNIT
148+88.5	0.5	EACH

TRAFFIC BARRIER TERMINAL, TYPE 1 SPL (TANGENT)

LOCATION	QUANTITY	UNIT
LT. 149+11.0 TO LT. 149+61.0	1	EACH
LT. 150+48.0 TO LT. 150+98.0	1	EACH
TOTAL	2	EACH

SUGGESTED SEQUENCE OF OPERATIONS • STAGE 2

1. INSTALL TRAFFIC CONTROL ACCORDING TO TRAFFIC CONTROL STANDARD 701321.
2. REMOVE STAGE 2 PORTION OF EXISTING STRUCTURE AND GUARDRAIL.
3. CONSTRUCT STAGE 1 PORTION OF NEW STRUCTURE
4. CONSTRUCT PAVEMENT PATCH
5. CONSTRUCT SHOULDER WIDENING AND INSTALL GUARDRAIL.

REFLECTOR MARKERS, TYPE A

STATION	TO	STATION	QUANTITY	UNIT
LT 149+61.0	TO	LT 150+48.5	4	EACH
TOTAL			4	EACH

TERMINAL MARKER - DIRECT APPLIED

STATION	QUANTITY	UNIT
LT 149+11.0	1	EACH
LT 150+98.0	1	EACH
TOTAL	2	EACH

GUARDRAIL REMOVAL

STATION	TO	STATION	QUANTITY	UNIT
LT 148+96.32	TO	LT 150+97.17	201	FOOT
TOTAL			201	FOOT

IMPACT ATTENUATORS, RELOCATE (NON-REDIRECTIVE), TEST LEVEL II

STATION	QUANTITY	UNIT
148+81	1	
150+93	1	
TOTAL	2	EACH

STEEL PLATE BEAM GUARD RAIL, TY A

STATION	TO	STATION	QUANTITY	UNIT
Lt. 149+to	TO	Lt. 150+87.5 FT		

REVISIONS	
NAME	DATE

ILLINOIS DEPARTMENT OF TRANSPORTATION

STAGE 2 CONSTRUCTION
STA 146+90 TO STA 152+87

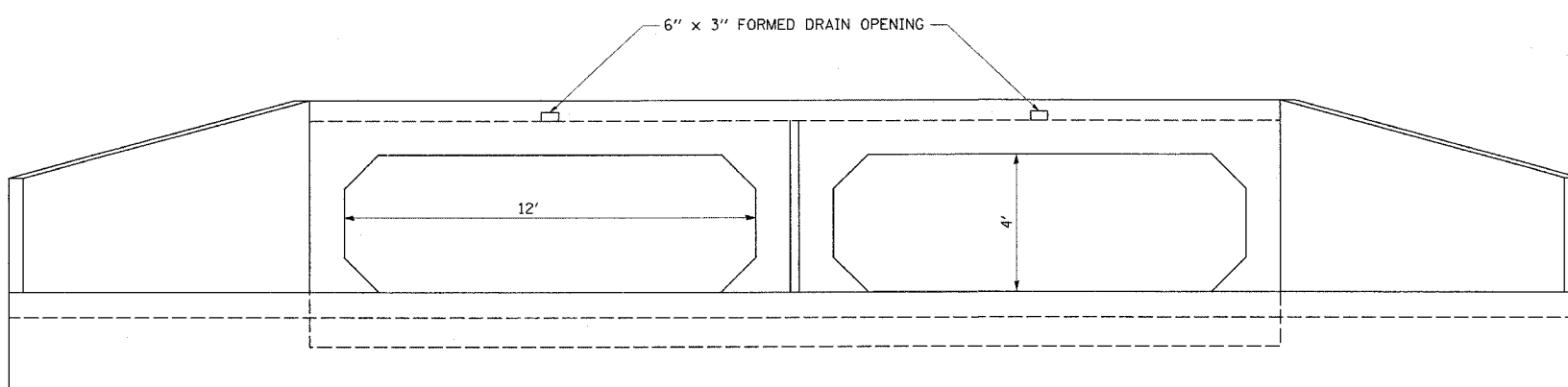
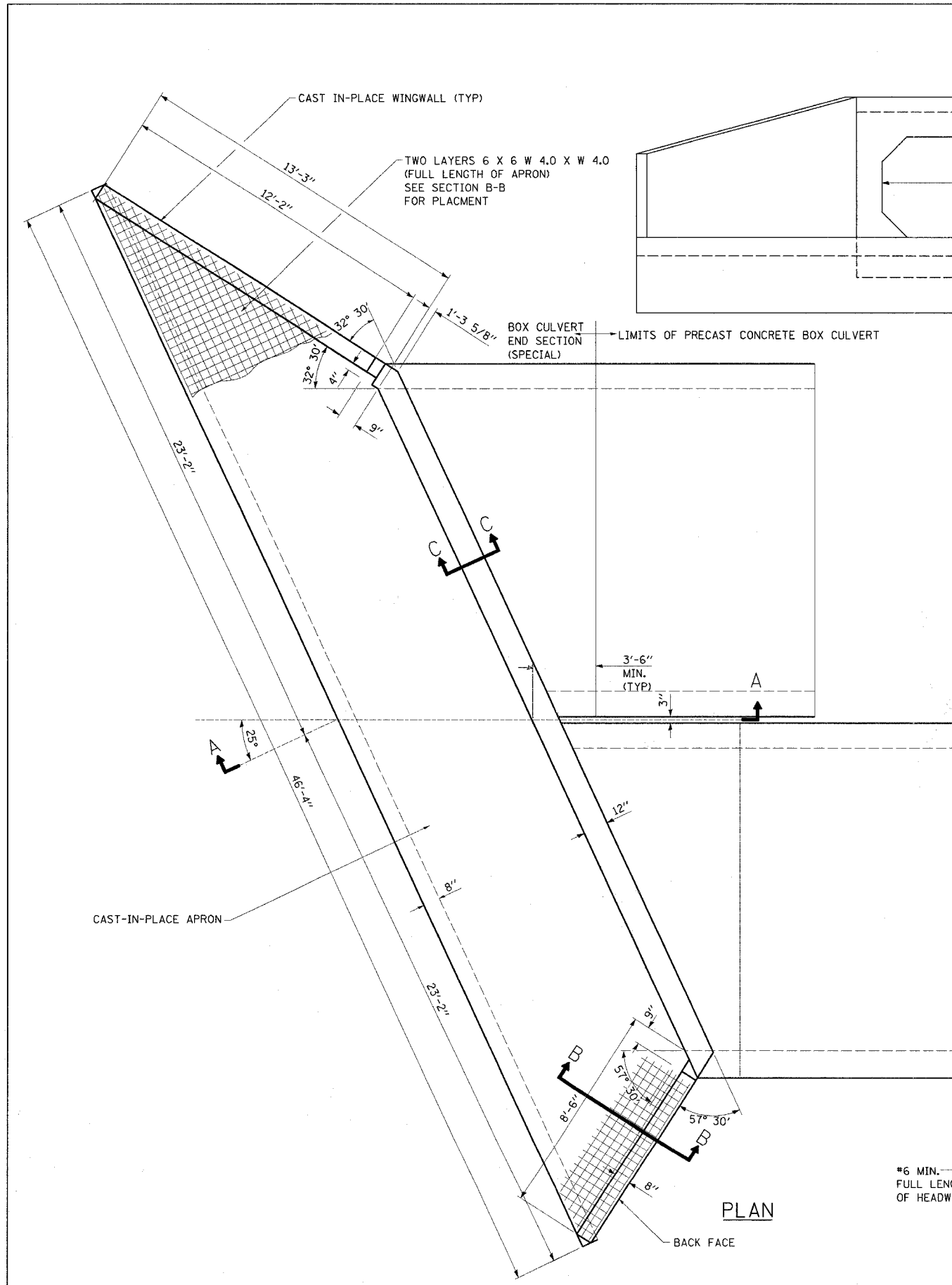
SCALE: VERT. _____
HORIZ. _____

DATE _____

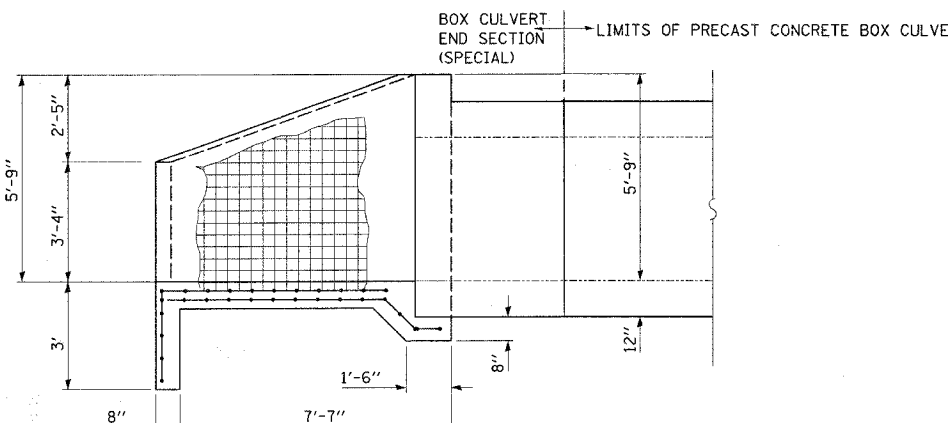
DRAWN BY _____
CHECKED BY _____

PLOT DATE = 2/13/2007
 FILE NAME = \\s111\74225\shplan_74225.dgn
 PLOT SCALE = 28.40000 / IN.
 USER NAME = teatagick

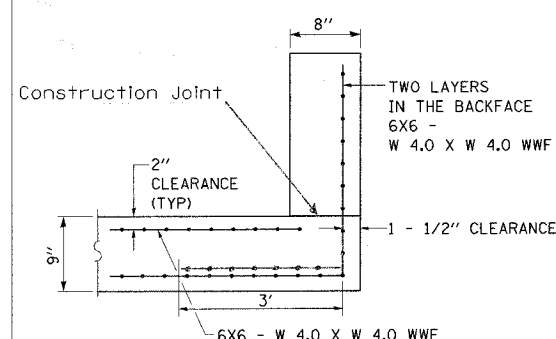
F.A.P. RTE.	SECTION	COUNTY	TOTAL SHEETS	SHEET NO.
320		MACON	31	26
STA.	TO STA.			
FED. ROAD DIST. NO.	ILLINOIS FED. AID PROJECT			
• (101)RS-3, 101B-1				



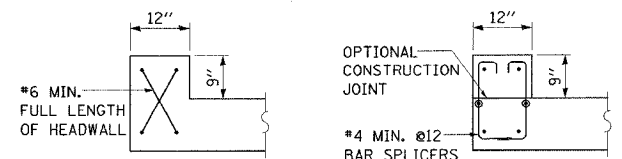
END ELEVATION



SECTION A-A



SECTION B-B



SECTION C-C
SHOWING HEADWALL REINFORCEMENT ONLY WITH MONOLITHIC HEADWALL

GENERAL NOTES

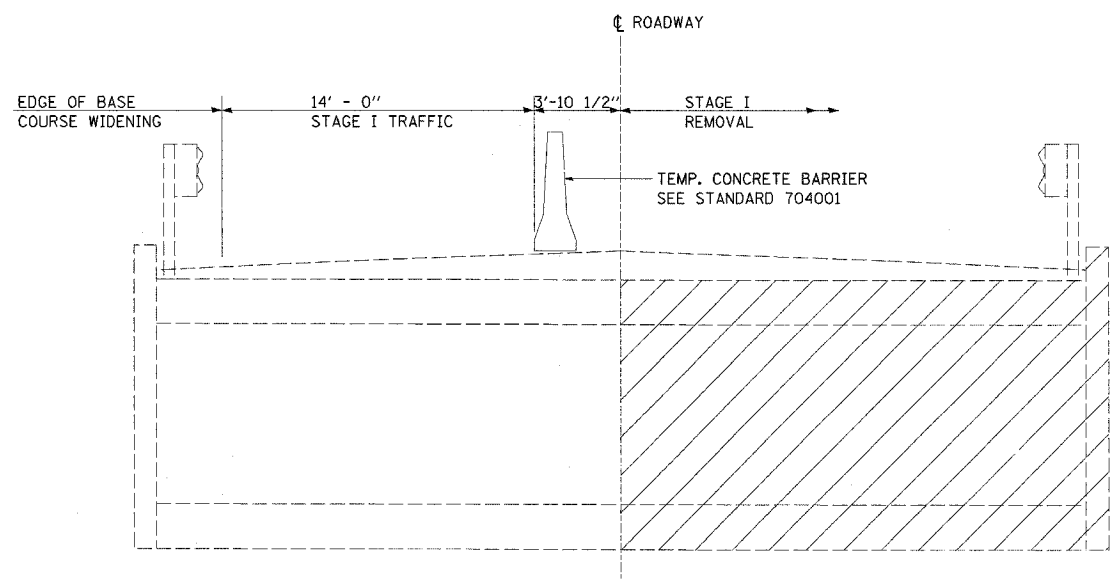
- Build tops of headwalls parallel to the grade line.
- All construction joints shall be bonded.
- Reinforcement bars shall conform to the requirements of ASTM A706 Gr 60 (IL Modified). See Special Provisions.
- When lapping sheets of welded wire fabric, the overlap measured between the outermost cross wires of each fabric sheet shall not be less than 8".
- The cost to construct the cast-in-place concrete apron shall be included in the cost of the end section.
- The precast manufacturer shall design and detail a connection / construction joint between the precast concrete box sections and the cast in place apron and wingwall. The minimum area of reinforcement passing through these construction joints shall be 0.20 in² / lineal ft and may be provided by welded wire fabric, rebar or bar splicers. The maximum spacing of reinforcement shall be 12 inches. The reinforcement shall extend on either side of the construction joint a distance required to fully develop the strength of the bar. The design shall be detailed in the shop drawings. The cost of the connection is included in the cost of the end section.

REVISIONS	
NAME	DATE

ILLINOIS DEPARTMENT OF TRANSPORTATION
REINFORCED CONCRETE END SECTIONS
FOR DOUBLE 12'X4' BOX CULVERT
AT STA. 149+88.5
(SKEWED 25° LT. FWD. WITH ROADWAY)
STR. NO. 058-2011
 SCALE: VERT. _____
 DATE _____ HORIZ. _____
 DRAWN BY _____
 CHECKED BY _____

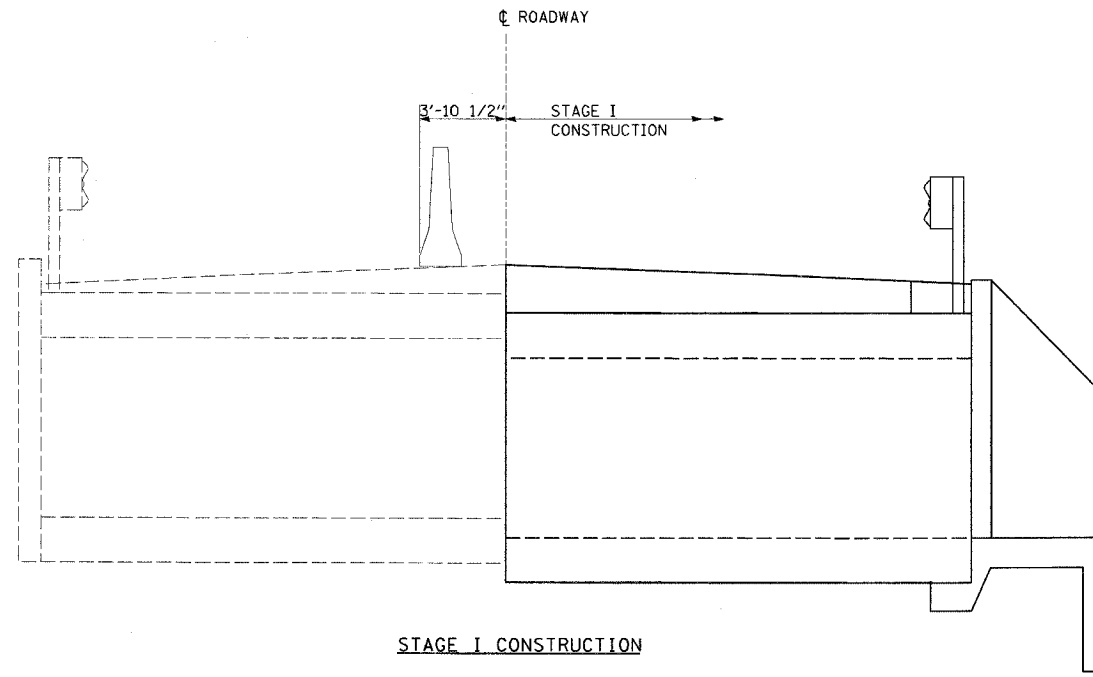
PLOT DATE = #DATE#
 PLOT NAME = #FILE#
 PLOT SCALE = #SCALE#
 USER NAME = #USER#

F.A.P. RTE.	SECTION	COUNTY	TOTAL SHEETS	SHEET NO.
320		MACON	31	27
STA.	TO STA.			
FED. ROAD DIST. NO.	ILLINOIS	FED. AID PROJECT		
• (101)RS-3, 101B-1				



STAGE I REMOVAL

NOTES: ALL STAGING CROSS SECTIONS ARE LOOKING NORTHWEST. HATCHED AREA INDICATES REMOVAL OF EXISTING STRUCTURES. FOR QUANTITY OF TEMPORARY CONCRETE BARRIER, SEE ROADWAY PLANS.



STAGE I CONSTRUCTION

PLOT DATE = #DATE*
 FILE NAME = #FILE#*
 PLOT SCALE = #SCALE*
 USER NAME = #USER#

REVISIONS	
NAME	DATE

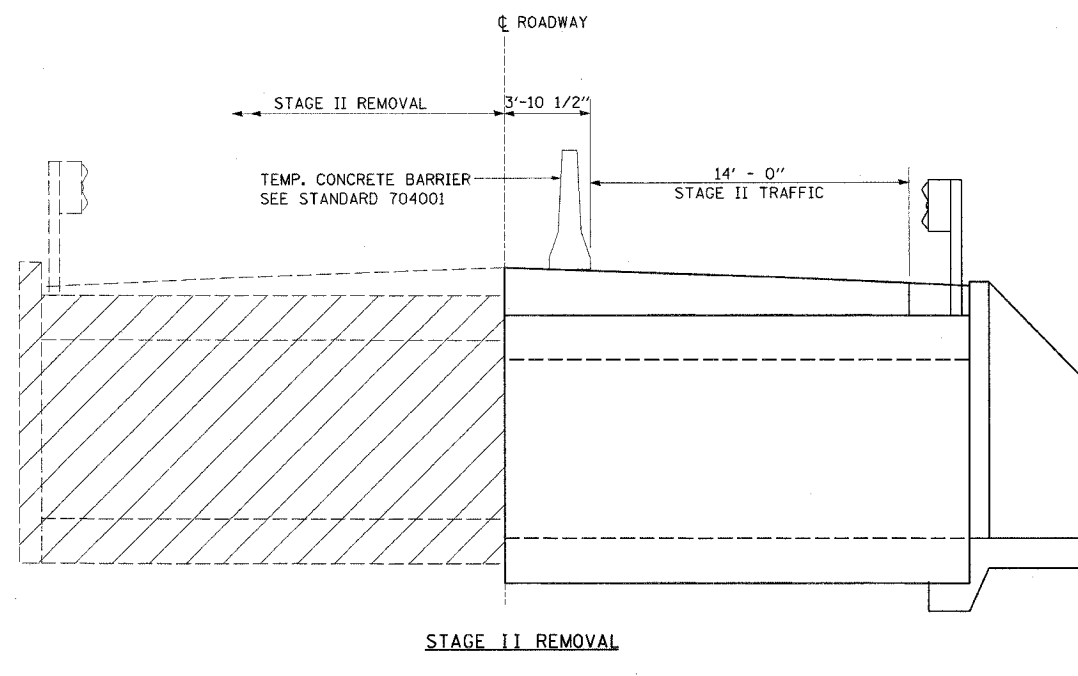
ILLINOIS DEPARTMENT OF TRANSPORTATION

STAGE I CONSTRUCTION
 DETAIL

SCALE: VERT.
 HORIZ.
 DATE

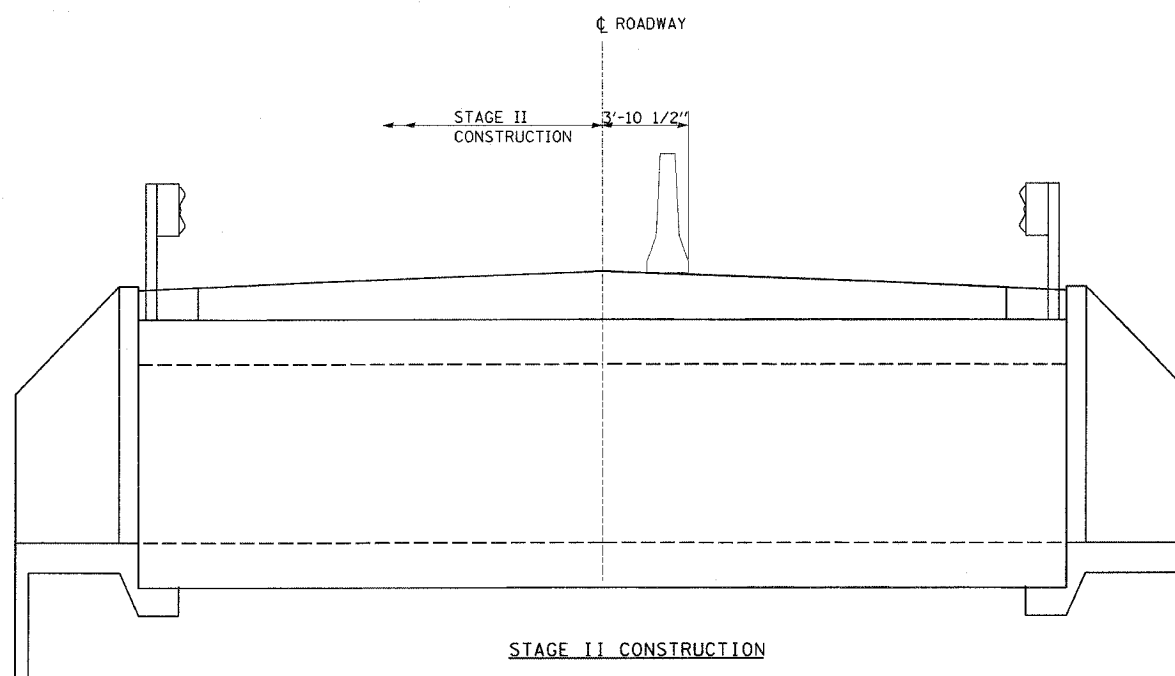
DRAWN BY
 CHECKED BY

F.A.P. RTE.	SECTION	COUNTY	TOTAL SHEETS	SHEET NO.
320		MACON	31	26
STA.	TO STA.			
FED. ROAD DIST. NO.	ILLINOIS	FED. AID PROJECT		
• (10)RS-3, 101B-1				



STAGE II REMOVAL

NOTES: ALL STAGING CROSS SECTIONS ARE LOOKING NORTHWEST. HATCHED AREA INDICATES REMOVAL OF EXISTING STRUCTURES. FOR QUANTITY OF TEMPORARY CONCRETE BARRIER, SEE ROADWAY PLANS.



STAGE II CONSTRUCTION

PLOT DATE = #DATE*
 FILE NAME = #FILE#*
 USER NAME = #USER#*

REVISIONS	
NAME	DATE

ILLINOIS DEPARTMENT OF TRANSPORTATION
 STAGE II CONSTRUCTION
 DETAIL

SCALE: VERT. _____
 HORIZ. _____
 DATE _____
 DRAWN BY _____
 CHECKED BY _____

F.A.P. RTE.	SECTION	COUNTY	TOTAL SHEETS	SHEET NO.
320		MACON	31	29
STA.	TO STA.			
FED. ROAD DIST. NO.	ILLINOIS	FED. AID PROJECT		
* (101)RS-3, 101B-1				



Illinois Department of Transportation
Division of Highways
Ill. Dept. of Trans. D-7

SOIL BORING LOG

Page 1 of 1

Date 12/28/06

ROUTE FAP 320 (IL 121) DESCRIPTION Box Culvert LOGGED BY E. Sandschafer

SECTION (101)RS-3 LOCATION S 12, SEC. 14, TWP. 15 N, RNG. 3 E, 3 PM

COUNTY Macon DRILLING METHOD Hollow stem auger & split spoon HAMMER TYPE Auto 140#

STRUCT. NO. <u>058-8309</u>	D	B	U	M	Surface Water Elev. <u>688.73</u> ft	D	B	U	M
Station <u>149+89</u>	E	L	C	O	Stream Bed Elev. <u>686.73</u> ft	E	L	C	O
BORING NO. <u>1</u>	P	O	S	I	Groundwater Elev.:	P	O	S	I
Station <u>149+64</u>	T	W	S	T	First Encounter <u>* Dry</u> ft	T	W	S	T
Offset <u>14.20R Rt</u>	H	S	Qu	T	Upon Completion <u>677.9</u> ft	H	S	Qu	T
Ground Surface Elev. <u>693.09</u> ft	(ft)	(6")	(tsf)	(%)	After <u>NA</u> Hrs.	(ft)	(6")	(tsf)	(%)

Asphalt shoulder.	692.29				Very stiff, damp, gray, CLAY TILL. (continued)	10	3.2	11
Aggregate and Clay mixture.					Extent of exploration.	672.09	13	B
Stiff, damp, dark gray, CLAY.	691.09				Benchmark: TBM PK Nail at Station 149+88.9 on centerline = 693.32', provided by Program Development.			
		3						
		5	1.2	25				
		9	PP					
		4						
		7	1.2	23				
		13	B		* Note: No water encountered while boring, however upon removal of hollow stem augers, hole caved at 15.2' depth and water was present.			
		2						
Soft, wet, gray, SANDY LOAM.	685.09							
		4	0.7	25				
		6	B					
Very stiff, damp, gray, CLAY TILL.	683.59							
		7						
		12	2.7	13				
		14	B					
		4						
		7	3.2	12				
		10	B					
		6						
		12	3.8	11				
		16	B					
		6						
		10	4.1	11				
		13	B					
		7						

The Unconfined Compressive Strength (UCS) Failure Mode is indicated by (B-Bulge, S-Shear, P-Penetrometer)
The SPT (N value) is the sum of the last two blow values in each sampling zone (AASHTO T206)

BBS, from 137 (Rev. 8-99)

PLOT DATE = #DATE#
PLOT SCALE = #SCALE#
PLOT NAME = #USER#



Illinois Department of Transportation
Division of Highways
Ill. Dept. of Trans. D-7

SOIL BORING LOG

Page 1 of 1

Date 12/28/06

ROUTE FAP 320 (IL 121) DESCRIPTION Box Culvert LOGGED BY E. Sandschafer

SECTION (101)RS-3 LOCATION S 12, SEC. 14, TWP. 15 N, RNG. 3 E, 3 PM

COUNTY Macon DRILLING METHOD Hollow stem auger & split spoon HAMMER TYPE Auto 140#

STRUCT. NO. <u>058-8309</u>	D	B	U	M	Surface Water Elev. <u>688.73</u> ft	D	B	U	M
Station <u>149+89</u>	E	L	C	O	Stream Bed Elev. <u>686.73</u> ft	E	L	C	O
BORING NO. <u>2</u>	P	O	S	I	Groundwater Elev.:	P	O	S	I
Station <u>150+16</u>	T	W	S	T	First Encounter <u>Dry</u> ft	T	W	S	T
Offset <u>13.60ft L4</u>	H	S	Qu	T	Upon Completion <u>Dry</u> ft	H	S	Qu	T
Ground Surface Elev. <u>693.03</u> ft	(ft)	(6")	(tsf)	(%)	After <u>NA</u> Hrs.	(ft)	(6")	(tsf)	(%)

Asphalt shoulder.	692.23				Very stiff to Hard, damp, gray, CLAY TILL. (continued)	9	5.5	10
Aggregate and Clay mixture.					Extent of exploration.	672.03	12	B
Sand from 2.0' to 2.4' depth.								
Stiff, damp, dark gray, CLAY.	690.63				Benchmark: TBM PK Nail at Station 149+88.9 on centerline = 693.32', provided by Program Development.			
		5						
		6	1.2	24				
		8	PP					
		3						
		5						
No recovery this trip.		6						
		0						
		0	1.2	24				
		2	PP					
Very stiff to Hard, damp, gray, CLAY TILL.	683.59							
		4						
		7	1.6	14				
		10	B					
		6						
		10	3.9	11				
		14	B					
		5						
		11	3.9	11				
		14	B					
		6						
		12	5.7	10				
		14	B					
		6						

The Unconfined Compressive Strength (UCS) Failure Mode is indicated by (B-Bulge, S-Shear, P-Penetrometer)
The SPT (N value) is the sum of the last two blow values in each sampling zone (AASHTO T206)

BBS, from 137 (Rev. 8-99)

REVISIONS	
NAME	DATE

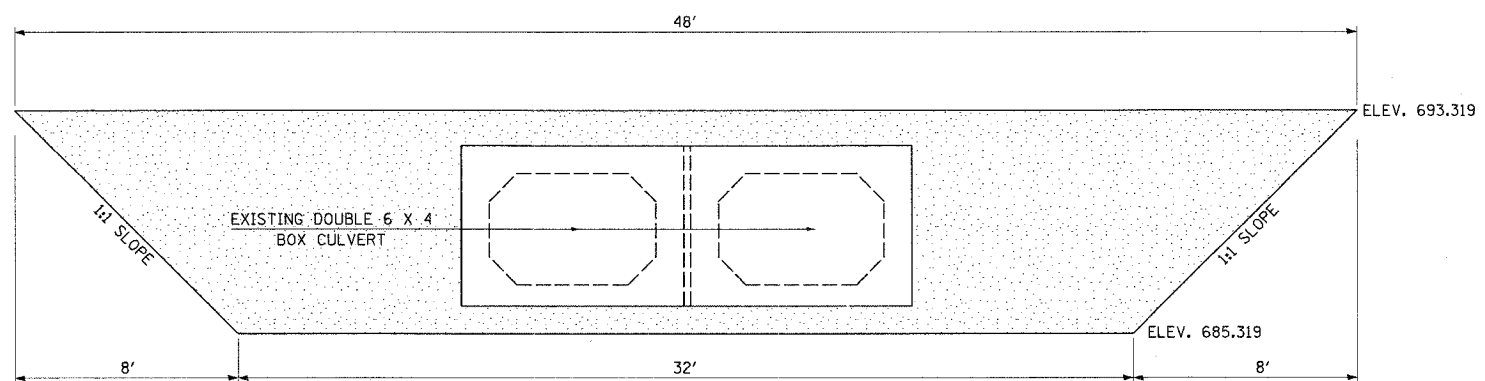
ILLINOIS DEPARTMENT OF TRANSPORTATION

SOIL BORING LOGS

SCALE: VERT.
DATE: HORIZ.

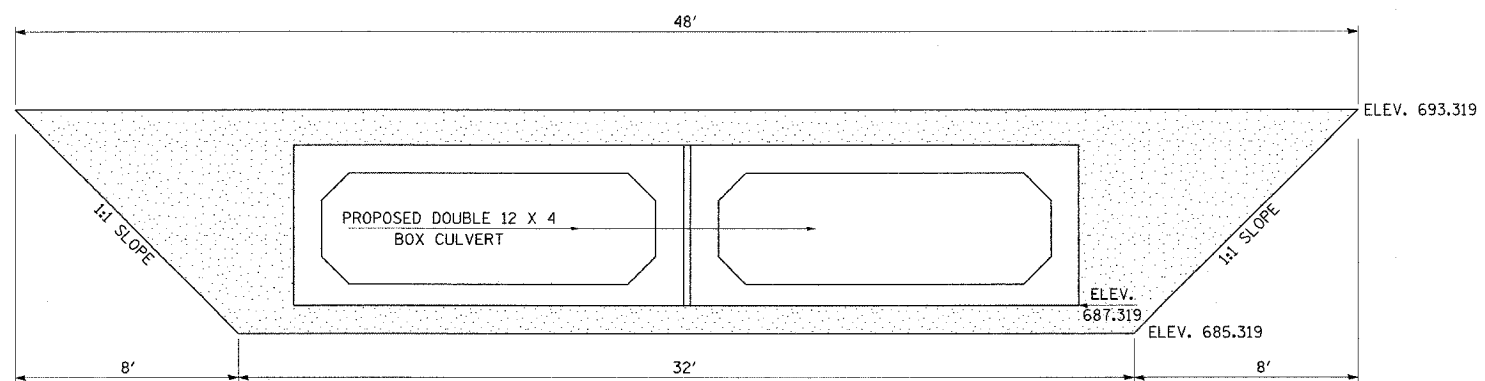
DRAWN BY
CHECKED BY

F.A.P. RTE.	SECTION	COUNTY	TOTAL SHEETS	SHEET NO.
320		MACON	31	30
STA.	TO STA.			
FED. ROAD DIST. NO.	ILLINOIS	FED. AID PROJECT		
• (101)RS-3, 101B-1				



STAGE I RETENTION

AREA RETAINED 224 SQ FT



STAGE I RETENTION

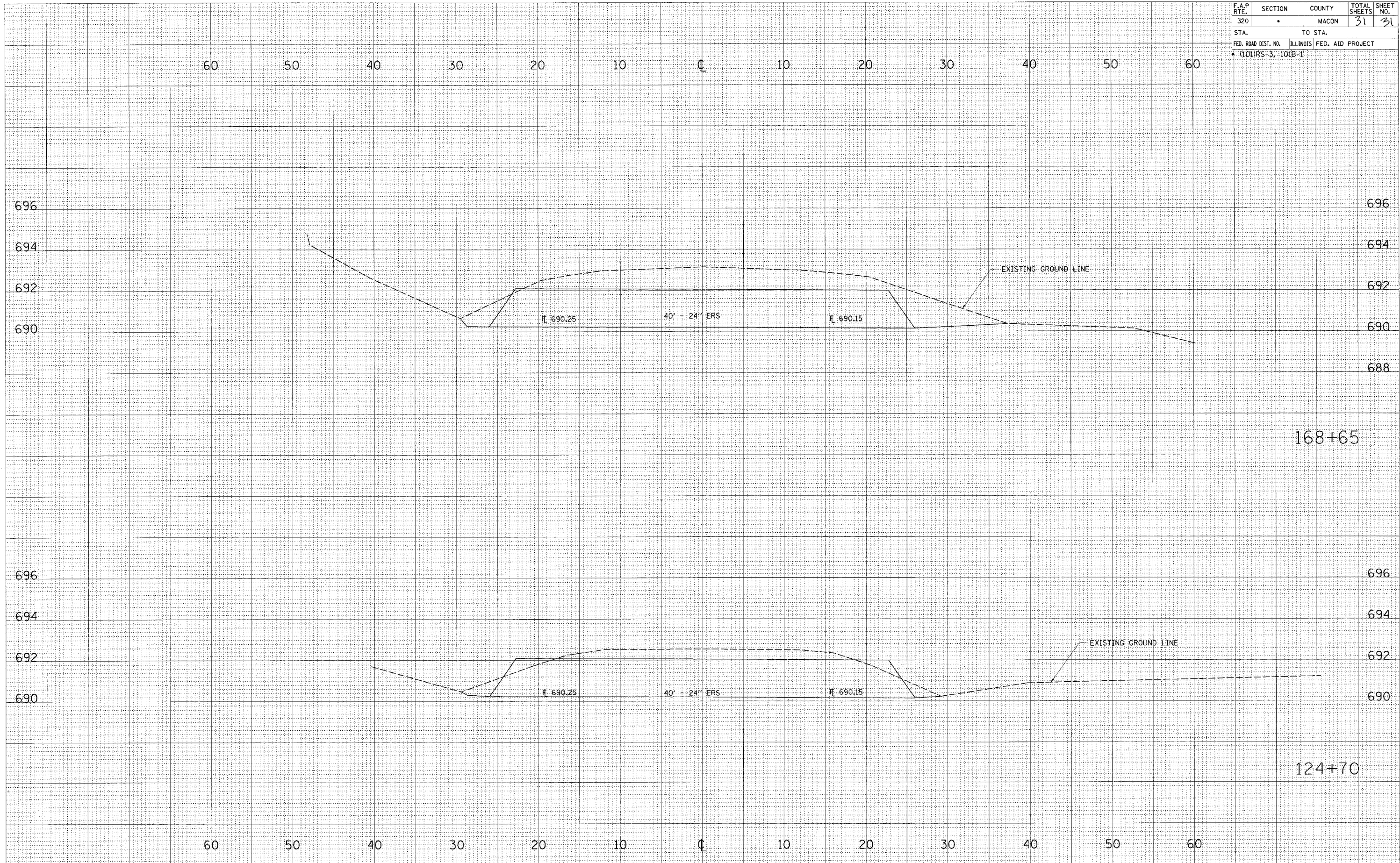
PLOT DATE = #DATE*
 FILE NAME = #FILEL*
 USER NAME = #USER*

REVISIONS	
NAME	DATE

ILLINOIS DEPARTMENT OF TRANSPORTATION
 TEMPORARY SOIL RETENTION
 AREA DETAIL

SCALE: VERT. _____
 HORIZ. _____
 DATE _____ DRAWN BY _____
 CHECKED BY _____

F.A.P. RTE.	SECTION	COUNTY	TOTAL SHEETS	SHEET NO.
320		MACON	31	31
STA.		TO STA.		
FED. ROAD DIST. NO.		ILLINOIS FED. AID PROJECT		
(101)RS-3		101B-1		



FINAL SURVEY BY DATE
 SURVEYED BY
 CHECKED BY
 DATE

ORIGINAL SURVEY BY DATE
 SURVEYED BY
 CHECKED BY
 DATE

PLOT DATE = #DATE#
 FILE NAME = #FILE#
 PLOT SCALE = #SCALE#
 USER NAME = #USER#