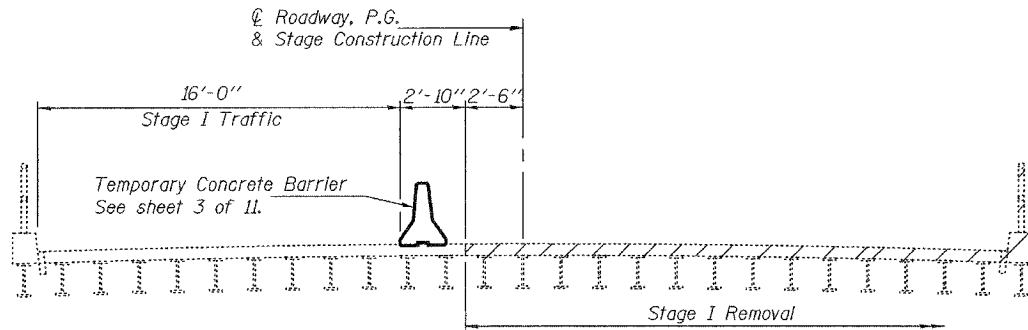


STATE OF ILLINOIS  
DEPARTMENT OF TRANSPORTATION

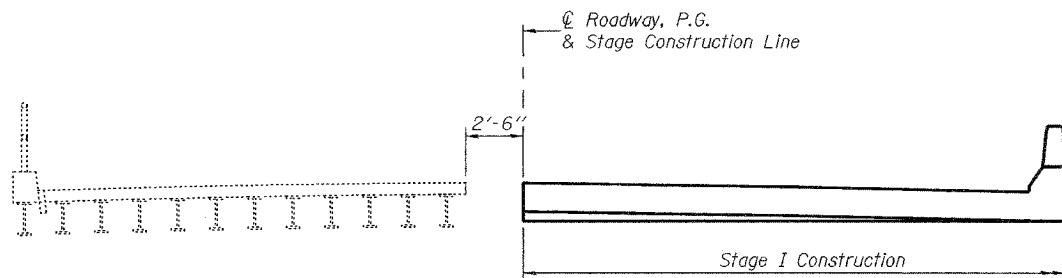
ROUTE NO.	SECTION	COUNTY	TOTAL SHEETS	SHEET NO.
F.A.U. 9079	65BR	MADISON	46	19
FED. ROAD DIST. NO. 7		ILLINOIS	FED. AID PROJECT-	

SHEET NO. 2  
11 SHEETS

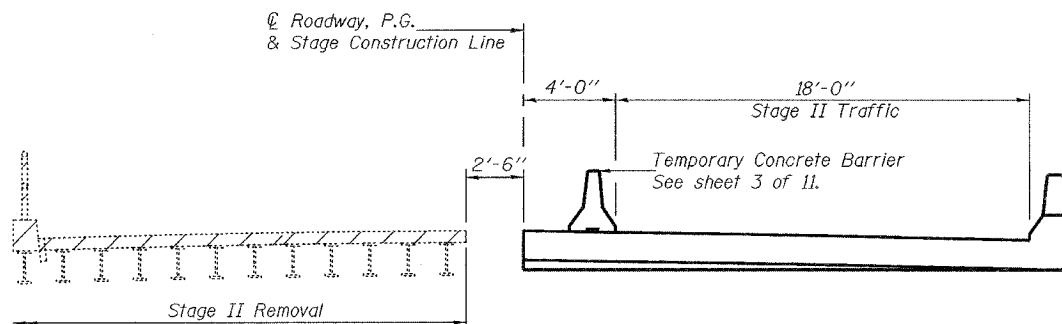
Contract 76136



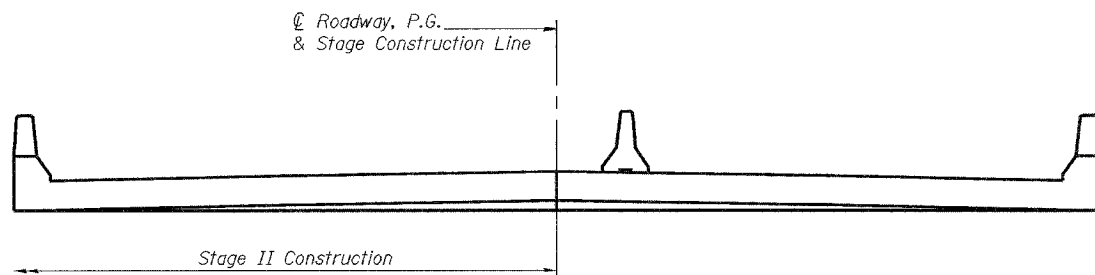
**STAGE I REMOVAL**



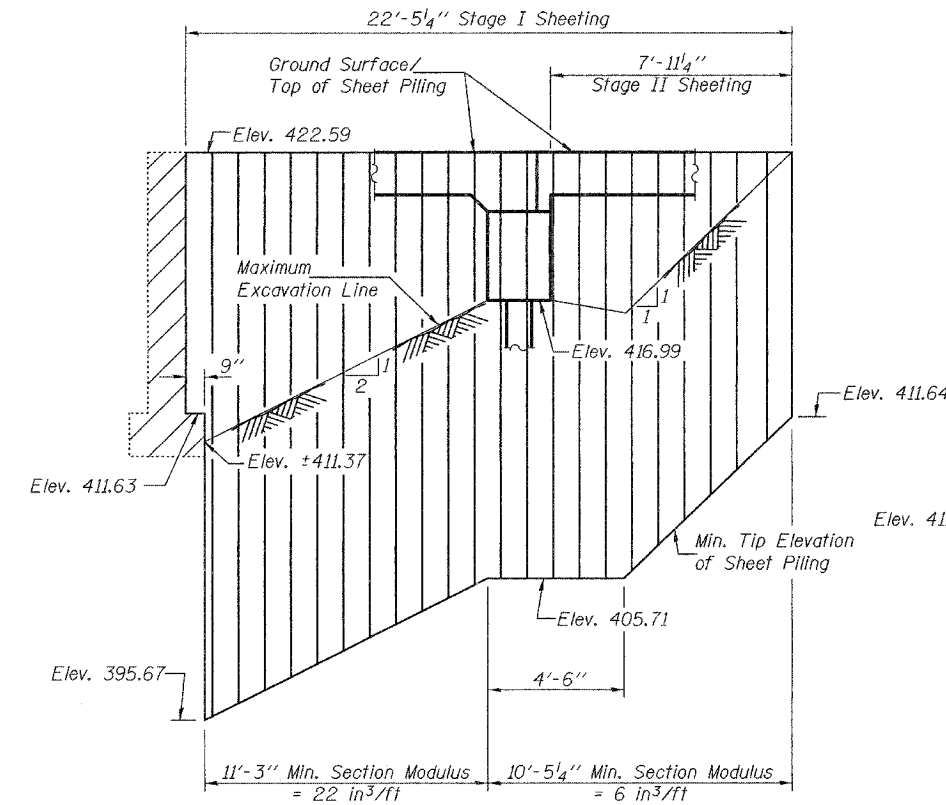
**STAGE I CONSTRUCTION**



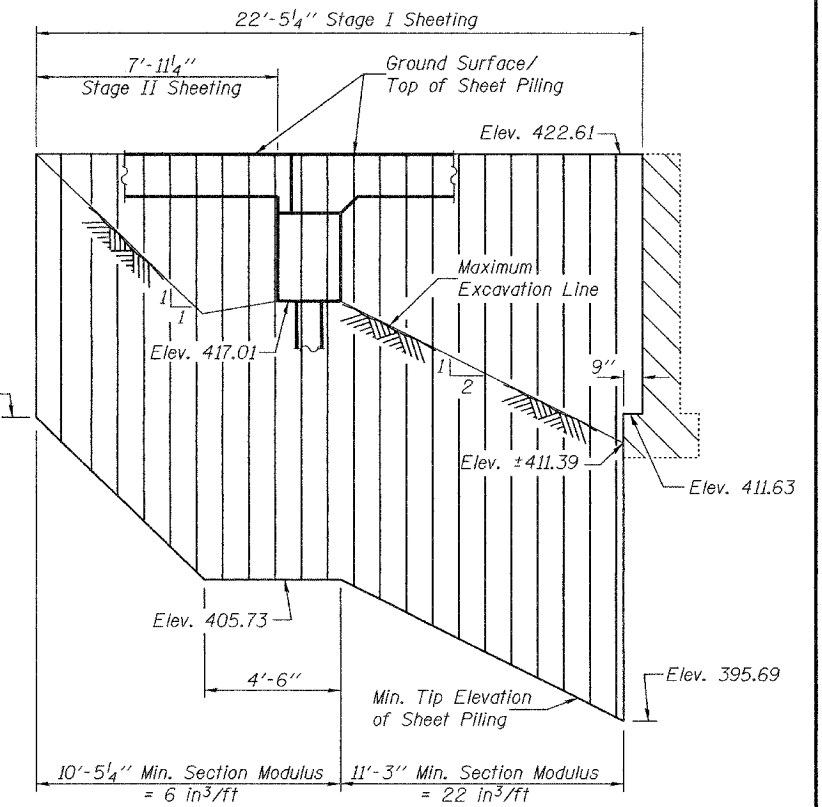
**STAGE II REMOVAL**



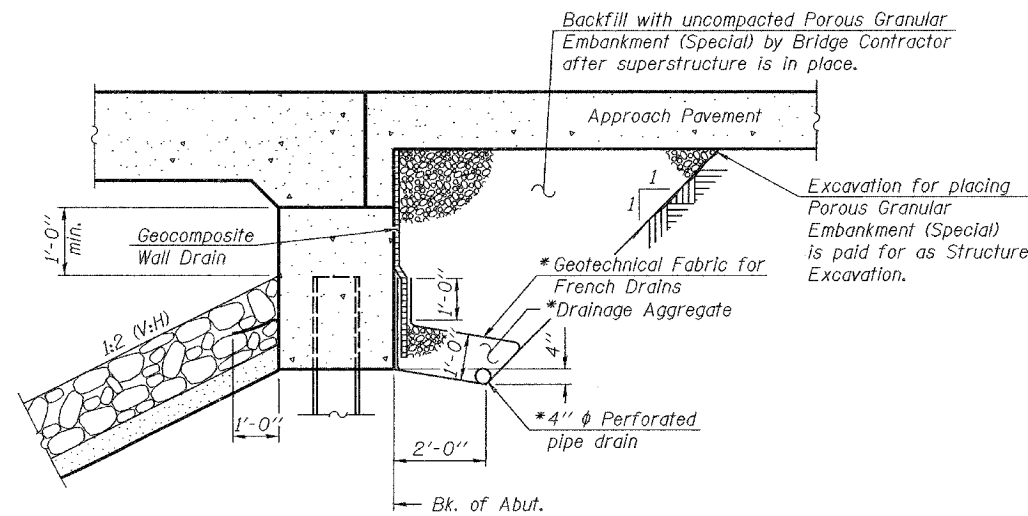
**STAGE II CONSTRUCTION**



**TEMPORARY SHEET PILING AT EAST ABUTMENT**



**TEMPORARY SHEET PILING AT WEST ABUTMENT**



**SECTION THRU INTEGRAL ABUTMENT**

\* Included in the cost of Pipe Underdrains for Structures, 4".

All drainage system components shall extend to 2'-0" from the end of each wingwall except an outlet pipe shall extend until intersecting with the side slopes. The pipes shall drain into concrete headwalls. (See Article 601.05 of the Standard Specifications and Highway Standard 601101).

Notes:

- Hatched area indicates Removal of Existing Structures. All staging sections are looking East.
- For quantity of Temporary Concrete Barriers, see Roadway Plans.
- If the Contractor chooses to alter the temporary cantilevered sheet piling design requirements shown on the plans, a design submittal including plan details and calculations will be required for review and acceptance by the Engineer.
- The Contractor shall connect the first sheet to the existing abutment wall to ensure stability of sheets driven to the top of the existing footing. This connection shall be reviewed and accepted by the Engineer and included in the cost for Temporary Sheet Piling.

DESIGNED	R.L.T.
CHECKED	J.P.A. & T.R.B.
DRAWN	BECKY M. LEACH
CHECKED	R.L.T. & G.R.A.

EXAMINED	November 22, 2006
PASSED	Thomas J. Damagala ENGINEER OF BRIDGES
	Ralph E. Anderson ENGINEER OF BRIDGES AND STRUCTURES

**STAGE CONSTRUCTION DETAILS**  
**F.A.U. ROUTE 9079 - SECTION 65BR**  
**MADISON COUNTY**  
**STATION 388+43.96**  
**STRUCTURE NO. 060-0236**