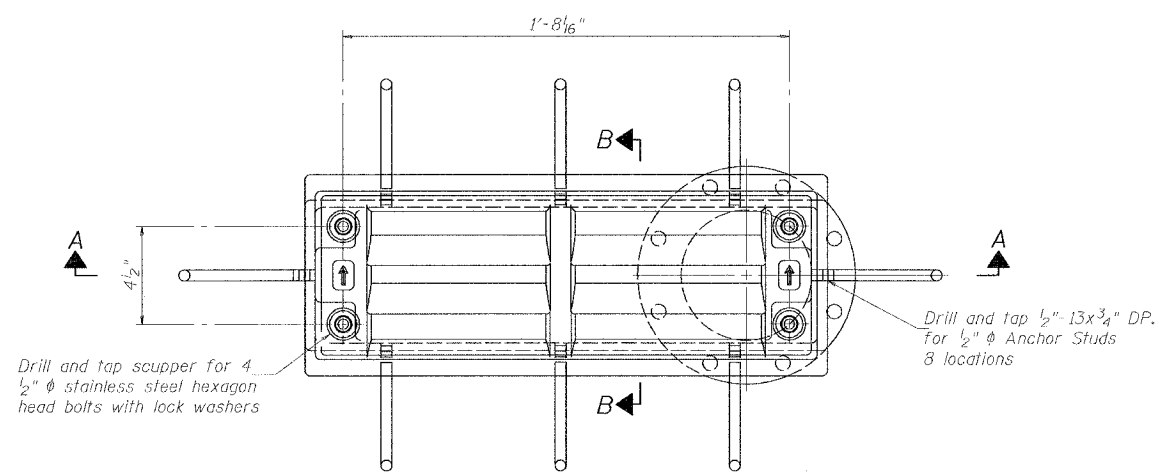
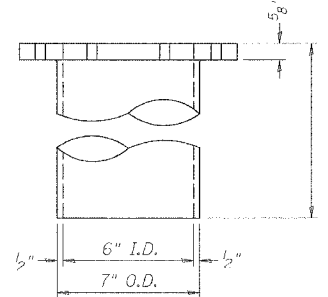
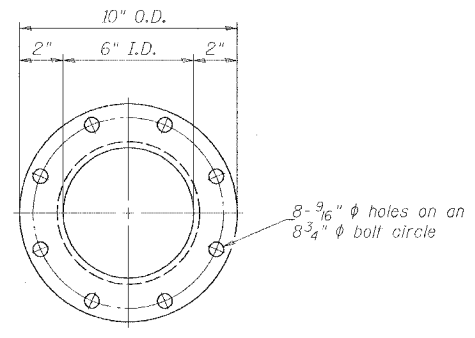


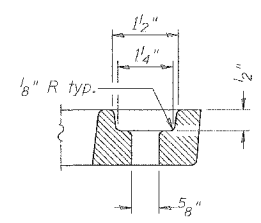
ROUTE NO.	SECTION	COUNTY	TOTAL SHEETS	SHEET NO.
F.A.I. 70	*	ST. CLAIR	99	67
FED. ROAD DIST. NO. 7	ILLINOIS	FED. AID PROJECT 1M-70		
* 82-3HVB-3R-5			SHEET S-46 OF S-56	
CONTRACT NO. 76985				



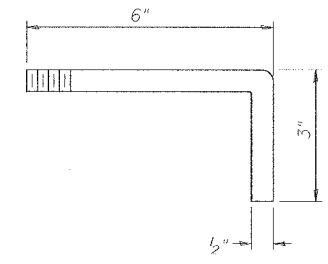
PLAN



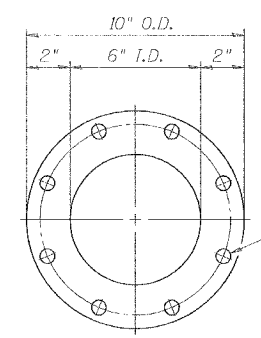
DOWNSPOUT



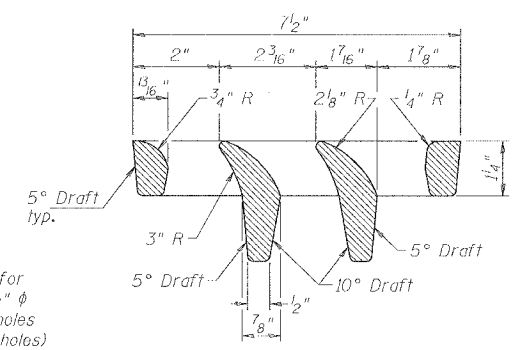
BOLT HOLE DETAIL



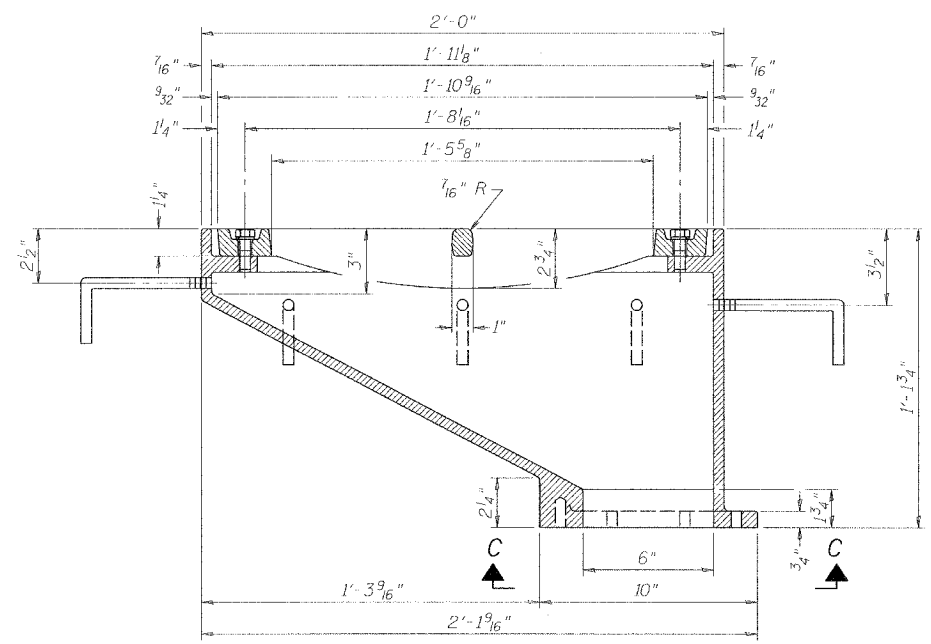
ANCHOR STUD DETAIL



VIEW C-C

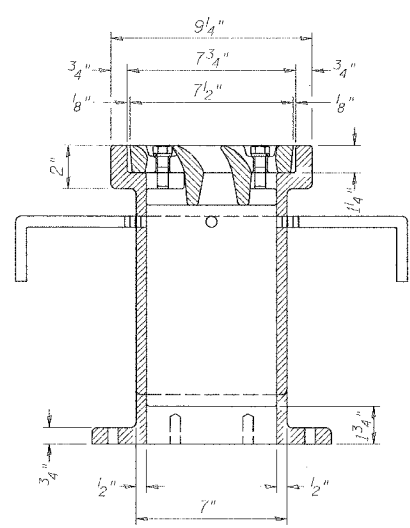


VANE GRATE DETAIL



SECTION A-A

See Sht. S45 for scupper location relative to parapet.



SECTION B-B

Notes:

- All cast iron parts shall be gray iron conforming to the requirements of AASHTO M 105, Class 35B.
- Bolts, anchor studs, washers and nuts shall conform to the requirements of ASTM A 307 and shall be galvanized according to AASHTO M 232.
- The grate, frame and downspout shall be galvanized according to AASHTO M 111 and ASTM A 385. Downspouts located on the exterior side of a painted steel fascia beam shall be painted with the finish coat specified for the exterior side of the fascia beam.
- As an alternate, bolts, anchor studs, washers and nuts may be stainless steel according to Article 1006.29(d) of the Standard Specifications.
- Structural steel weldments of equal sections and of the same configuration may be substituted for cast iron. Fillet or full penetration welds shall be used for the weldments. Details shall be submitted to the Engineer for approval.
- The Contractor shall take appropriate measures to assure that Protective Coat is not applied to the scupper.
- Cost of the Grate, Frame, Downspout, Anchor Studs, Bolts, Washers and Nuts including complete installation of the scupper shall be paid for at the contract unit price each for Drainage Scupper, DS-12.

DRAINAGE SCUPPER - DS-12

REVISIONS		STATE OF ILLINOIS DEPARTMENT OF TRANSPORTATION REHABILITATION AND RETROFIT REPAIRS FAI ROUTE 70 POPLAR STREET BRIDGE APPROACHES ST. CLAIR COUNTY
NAME	DATE	
		STRUCTURE NO. 082-0141 (ROADWAY A)
		SCALE: N.T.S.
		DATE: 02/01/2007

DATE: 12/4/2007 FILENAME: P:\2001\1201-1800\2001.1240\Drafting\_RoadwayRehab\_AT\RampA\Draw A-DRA104.dgn

DESIGNED	IDOT
CHECKED	CSD
DRAWN	CLK
CHECKED	JPD