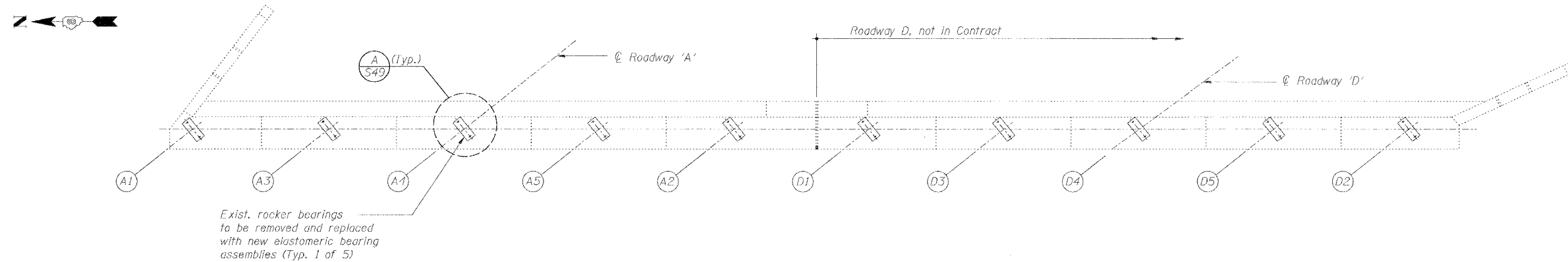
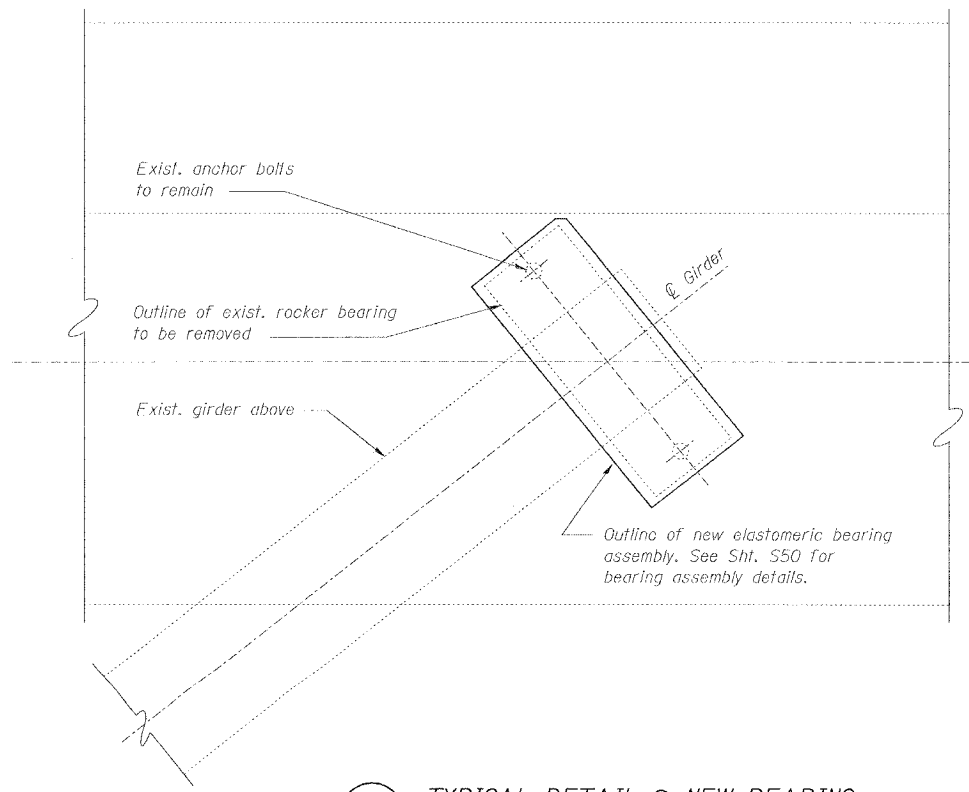


ROUTE NO.	SECTION	COUNTY	TOTAL SHEETS	SHEET NO.
F.A.I. 70	*	ST. CLAIR	99	70
FED. ROAD DIST. NO. 7	ILLINOIS	FED. AID PROJECT: IM-70		
* 82-3HVB-3R-5			SHEET S-49 OF S-56	
CONTRACT NO. 76985				



1
S49 TOP VIEW OF ABUTMENT A46



A
S49 TYPICAL DETAIL OF NEW BEARING

BILL OF MATERIAL - BEARINGS @ A46		
Item	Unit	Quantity
Jack and remove existing bearings	Ea.	5
Elastomeric bearing assembly, Type 1	Ea.	5

BEARING REACTION TABLE
ABUTMENT A46

Load*	Stringers A1-A5
R _D (K)	41
R _L (K)	29
Imp. (K)	9
R (Total) (K)	70

*Gravity Service Loads
*Minimum Jack Size: 70 Ton

BEARING REPLACEMENT DETAILS

REVISIONS		STATE OF ILLINOIS DEPARTMENT OF TRANSPORTATION REHABILITATION AND RETROFIT REPAIRS FAI ROUTE 70 POPLAR STREET BRIDGE APPROACHES ST. CLAIR COUNTY STRUCTURE NO. 082-0141 (ROADWAY A) SCALE: N.T.S. DATE: 02/01/2007
NAME	DATE	

DATE: 1/24/2007
FILENAME: F:\2001\1201-1300\20011240\Drafting\RoadwayRehab_AT\RampA\bearings\A-BEAR01.dgn

DESIGNED	APJ
CHECKED	JEL
DRAWN	CLK
CHECKED	APJ