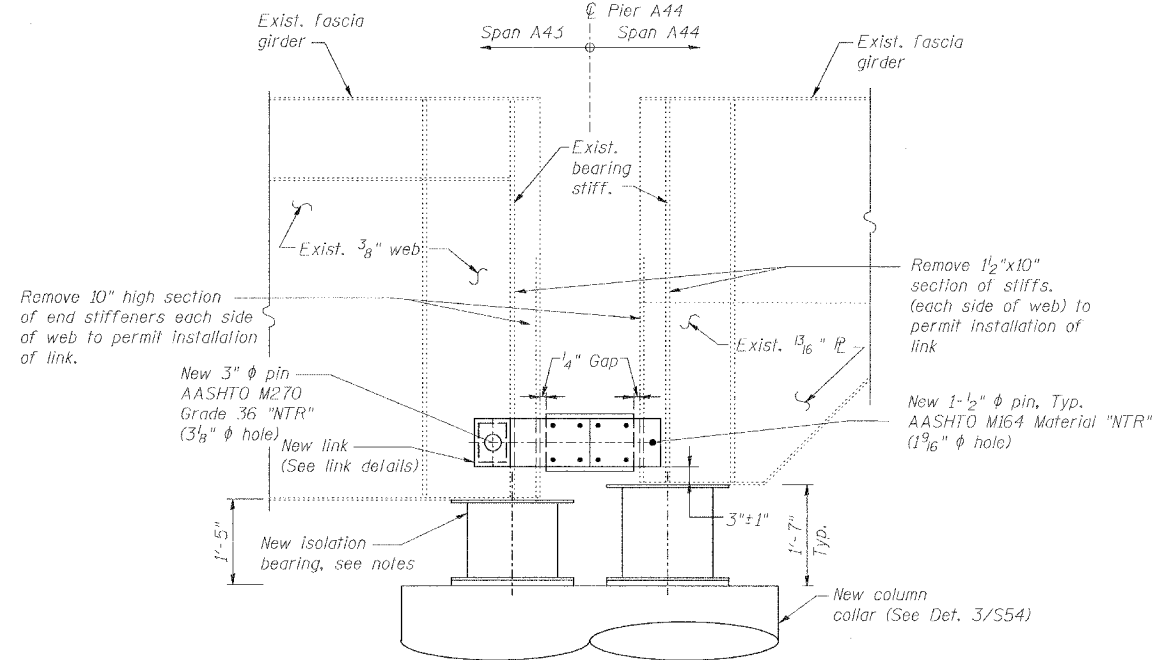


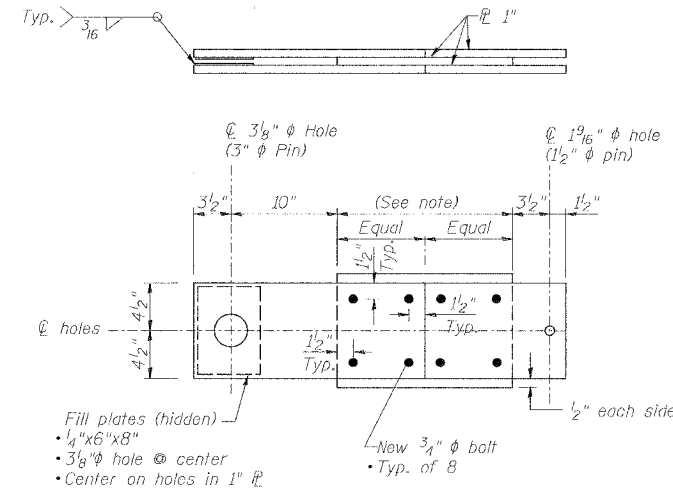
ROUTE NO.	SECTION	COUNTY	TOTAL SHEETS	SHEET NO.
F.A.I. 70	*	ST. CLAIR	99	74
FED. ROAD DIST. NO. 7	ILLINOIS	FED. AID PROJECT- 144-70		
* 82-3HVB-3R-5			SHEET S-53 OF S-56	
CONTRACT NO. 76985				



1 DETAIL - LINKS AND BEARINGS
S53

Notes:

- Center bearings on existing bearing stiffeners.
- Design of bearings, connections to girders and columns, and any pedestals, fill plates, or other items needed to satisfy the bearing performance requirement given in the special provisions, is the responsibility of the contractor. For additional requirements, See Sheet S56.

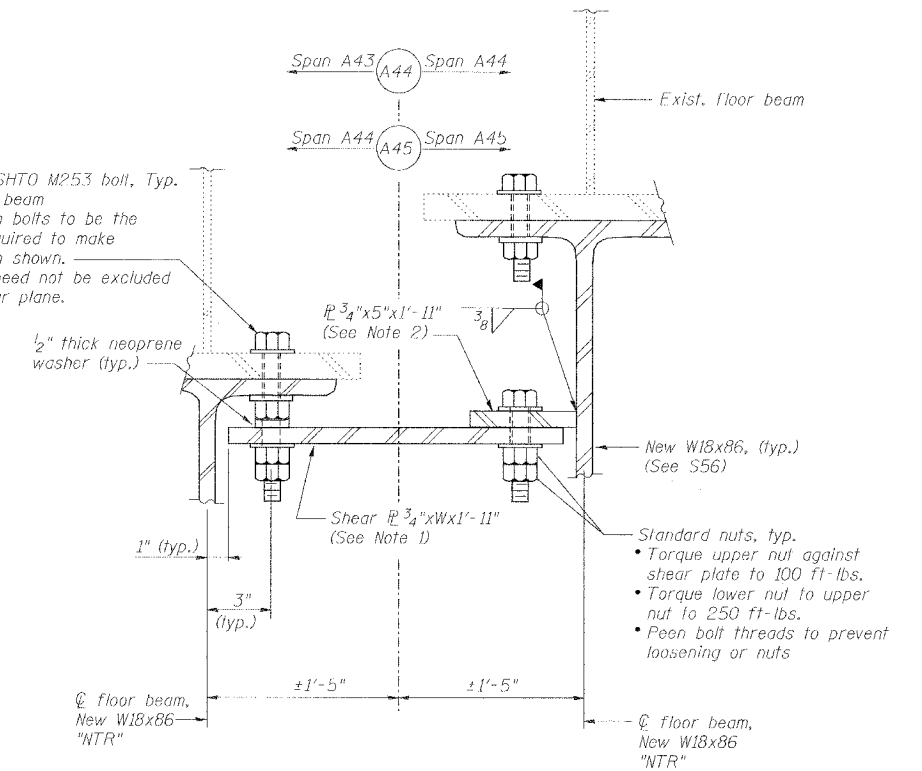


3 CONNECTOR LINK DETAIL - PIER A44
S53

Notes:

- This dimension to be 1/2" less than clear distance between ends of girders at time of erection.

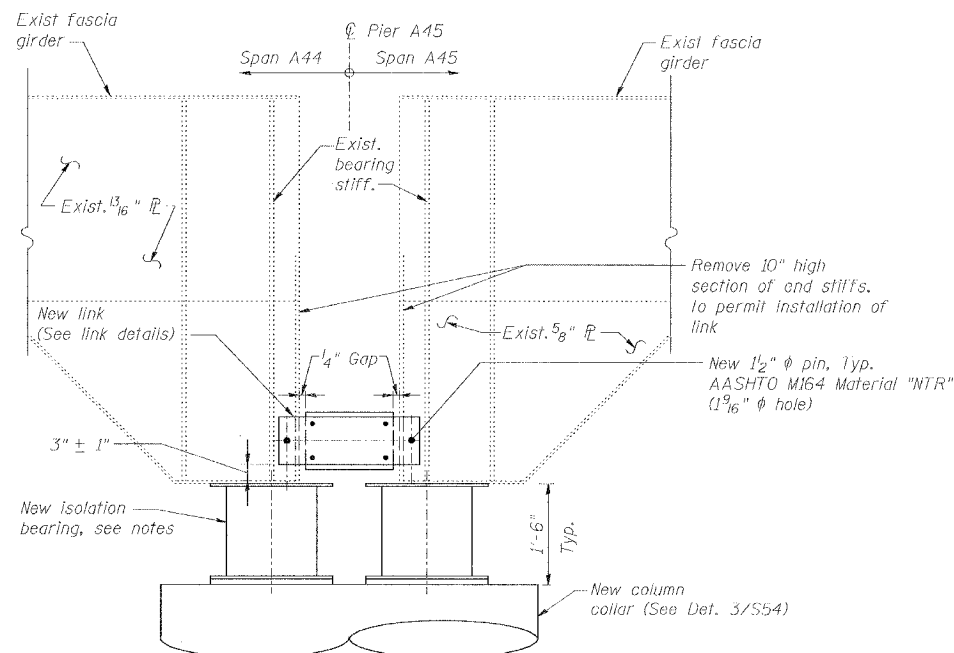
7/8" ϕ AASHTO M253 bolt, Typ. W18/floor beam connection bolts to be the length required to make connection shown. Threads need not be excluded from shear plane.



5 SHEAR LINK DETAILS - PIERS A44 AND A45
S53

Notes:

- Plate width (W) shall be 2" less than the distance between floor beam centerlines at the time of installation.
- Connection plate shall be centered on shear plate, which in turn, shall be centered on a group of 4. W18 connection bolts on the opposite side of the pier centerline. The connection plate shall be connected to the shear plate with 4-7/8" ϕ AASHTO M164 bolts @ 6" o.c., with 2" minimum edge distance on each plate.
- Two such links at Pier A44 (one on each side of roadway). One such link at Pier A45.
- Locate links within 10' of column.
- Load carrying components designated "NTR" shall conform to the Supplemental Requirements for Notch Toughness, Zone 2.



2 DETAIL - LINKS AND BEARINGS
S53

Notes:

- Center bearings on existing bearing stiffeners.
- Design of bearings, connections to girders and columns, and any pedestals, fill plates, or other items needed to satisfy the bearing performance requirement given in the special provisions, is the responsibility of the contractor. For additional requirements, See Sheet S56.

4 CONNECTOR LINK DETAIL - PIER A45
S53

Notes:

- This dimension to be 1/2" less than clear distance between ends of girders at time of erection.

DATE: 1/24/2007 FILENAME: P:\2001\1201-1300\20011240\Drafting\RoadwayRehab_AT\RampA\ISOLA-ISOLA.dgn

DESIGNED	HH
CHECKED	JEL
DRAWN	CLK
CHECKED	JEL

REVISIONS	
NAME	DATE

SEISMIC ISOLATION DETAILS

STATE OF ILLINOIS
DEPARTMENT OF TRANSPORTATION
REHABILITATION AND RETROFIT REPAIRS
FAI ROUTE 70
POPLAR STREET BRIDGE APPROACHES
ST. CLAIR COUNTY

STRUCTURE NO. 082-0141 (ROADWAY A)
SCALE: N.T.S.
DATE: 02/01/2007