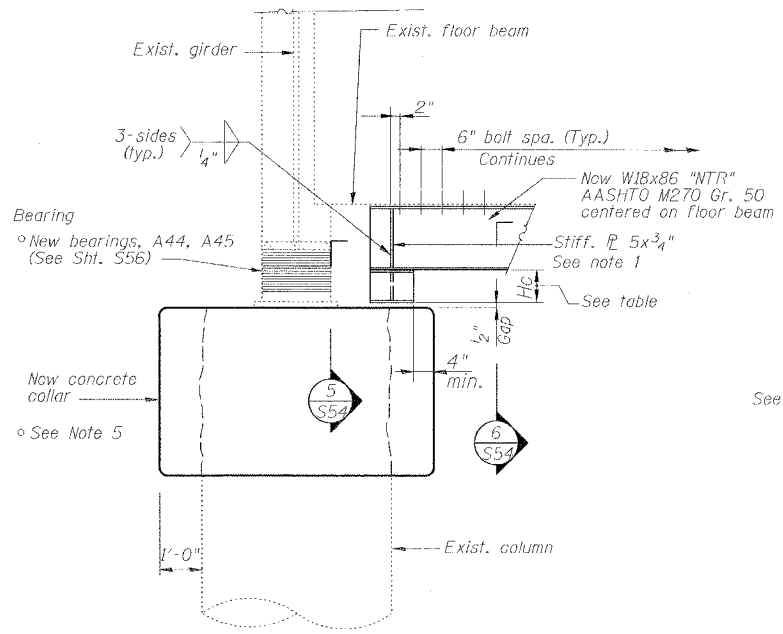
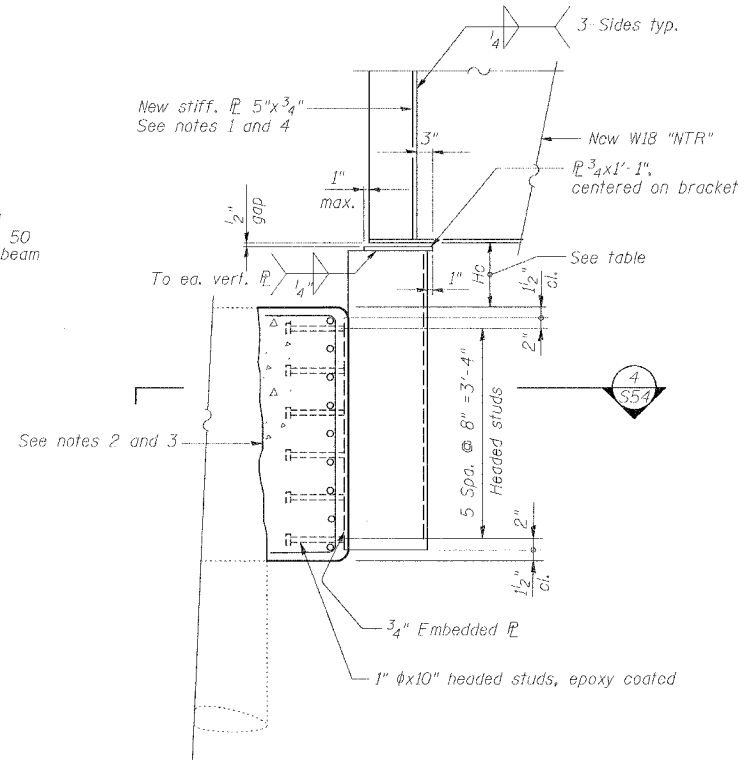


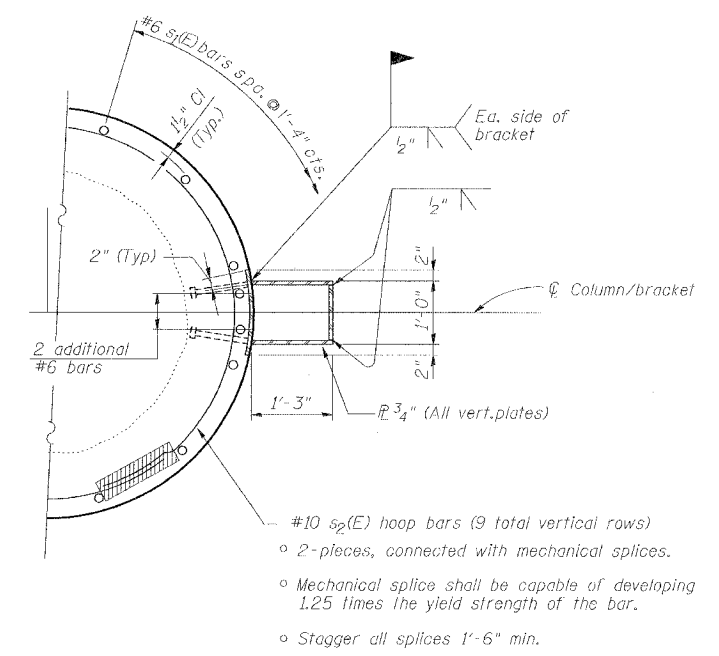
1 SECTION
S54



2 ELEVATION
S54

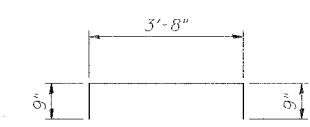


3 SECTION
S54

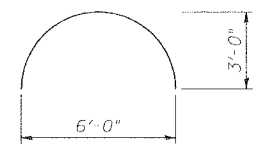


4 SECTION
S54 Reinforcing bars designated (E) shall be epoxy coated

Note:
Exist. girder and floor beam not shown for clarity.



Bar s1(E)



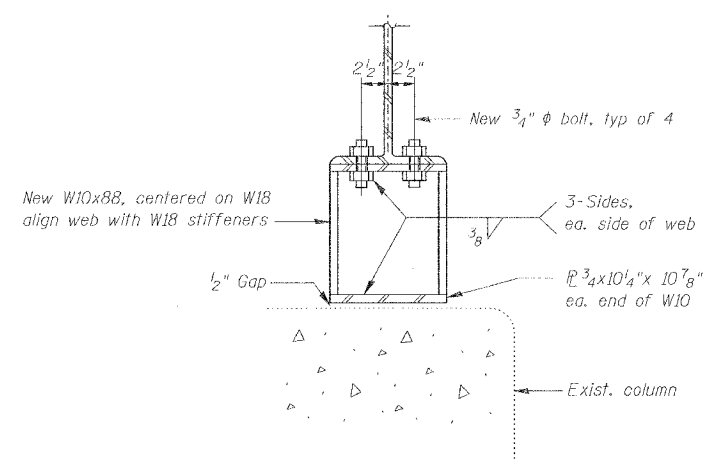
Bar s2(E)

- Notes:
1. Full height stiffener; each side of web; cope 3/4" max to clear beam fillets.
 2. Roughen existing column surface to 1/4" min. amplitude prior to placing collar.
 3. Remove any deteriorated concrete at location of new column collar.
 4. Align with end most stiffener on floor beam above.
 5. Remove existing column wraps at area of new collar.
 6. Load carrying components designated "NTR" shall conform to the Supplemental Requirements for Match T...

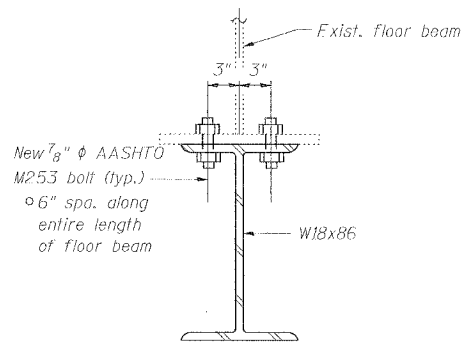
APPROXIMATE CLEARANCES
(Hc, Wc)

Pier	Floor Beam	Hc (in.)	Wc (in.)
A44	West	11	8
A44	East	13	6
A45	West	10	9
A45	East	14	10

Notes:
o Wc Applicable only at bracket locations
o Hc applies at both ends of floor beam



5 SECTION
S54



6 SECTION
S54

DATE: 12/2/2007 FILENAME: P:\2001\1901-1800\2001.1240\Drafting\Roadway\Rehab_Art\BampA\ISOLA-A-REED\06.dgn

DESIGNED	HH
CHECKED	JEL
DRAWN	CLK
CHECKED	JEL

REVISIONS	
NAME	DATE

SEISMIC RETROFIT DETAILS
STATE OF ILLINOIS
DEPARTMENT OF TRANSPORTATION
REHABILITATION AND RETROFIT REPAIRS
FAI ROUTE 70
POPLAR STREET BRIDGE APPROACHES
ST. CLAIR COUNTY
STRUCTURE NO. 082-0141 (ROADWAY A)
SCALE: N.T.S.
DATE: 02/01/2007