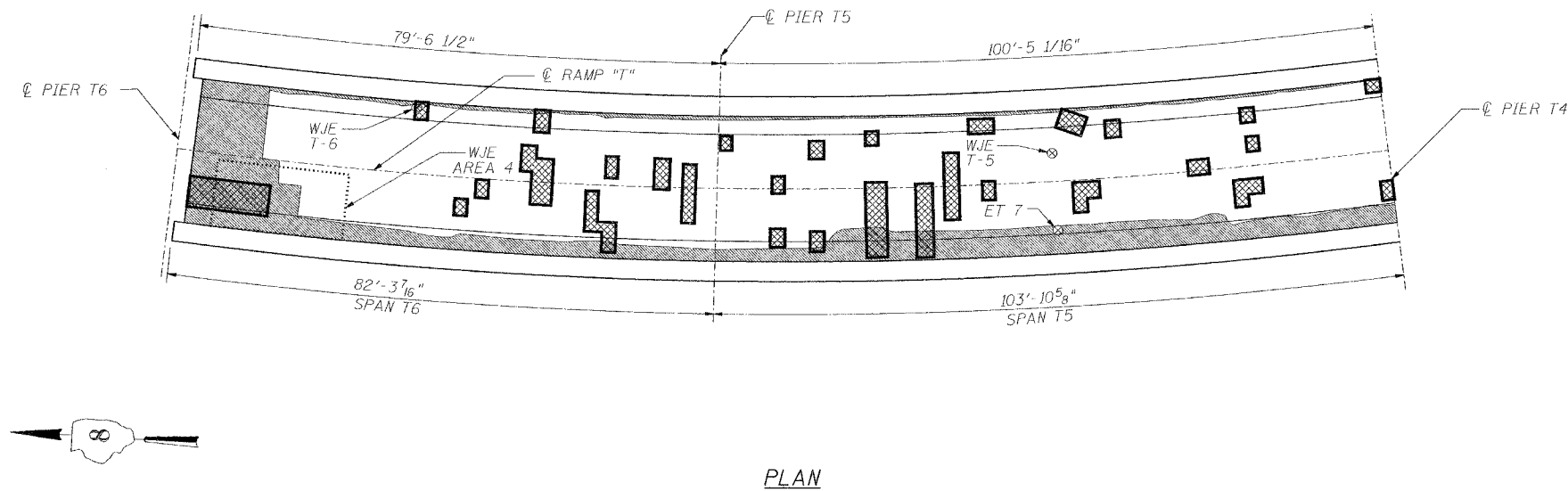
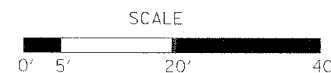


ROUTE NO.	SECTION	COUNTY	TOTAL SHEETS	SHEET NO.
F.A.I. 70	*	ST. CLAIR	99	91
FED. ROAD DIST. NO. 7	ILLINOIS	FED. AID PROJECT- 04-70		
82-3HVB-3R-5			SHEET S-14 OF S-22	
CONTRACT NO. 76985				



INFRARED THERMOGRAPHIC INSPECTION RESULTS

FIELD OBSERVATIONS SUMMARY		TOPSIDE		LEGEND	
ITEM	UNIT	QUANT.	%		
TOTAL AREA	ft ²	3981		DELAMINATION	
SHADE/DEBRIS	ft ²	0		SPALL	
DELAMINATION	ft ²	108	2.7	DEBOND	
SPALL	ft ²	0	0	ASPHALT PATCH	
DEBOND	ft ²	872	21.9	SUBSURFACE PATCH	
ASPHALT PATCH	ft ²	0	0	SHADE/DEBRIS	
SUBSURFACE PATCH	ft ²	0	0		



ANTICIPATED DECK REPAIR QUANTITIES (ft.²)

SPAN	2000 SURVEY RESULTS	2007 ANTICIPATED PARTIAL DEPTH REPAIRS
T5	270	380
T6	220	300

QUANTITIES IN THIS TABLE ARE FOR INFORMATIONAL PURPOSES ONLY AND ARE INCLUDED UNDER THE BRIDGE DECK HYDRO-SCARIFICATION AND BRIDGE DECK MICROSILICA CONCRETE OVERLAY PAY ITEMS. REFER TO SPECIAL PROVISIONS.

NOTES:

WISS, JANNEY, ELSTNER ASSOCIATES, INC. CORE LOCATIONS DESIGNATED AS "WJE". EARTH TECH, INC. CORE LOCATIONS DESIGNATED AS "ET".

AREAS OF DECK DELAMINATIONS AND SPALLS SHOWN REQUIRING REPAIR ARE ESTIMATED. ACTUAL REPAIR LOCATIONS SHOULD BE SHOWN ON AS-BUILT DRAWINGS.

INFRARED INSPECTION DATE: 7/24/00-7/26/00
SURFACE TYPE: ASPHALT OVERLAY

INFRARED THERMOGRAPHIC INSPECTION RESULTS



INSPECTED: TC
ANALYSIS: TC

CADD: MA/MD DS/EG
CHECKED: DU

REVISIONS	
NAME	DATE

STATE OF ILLINOIS
DEPARTMENT OF TRANSPORTATION
REHABILITATION AND RETROFIT REPAIRS
FAI ROUTE 70
POPLAR STREET BRIDGE APPROACHES
ST. CLAIR COUNTY

STRUCTURE NO. 082-0146 (Ramp 1)
SCALE: N.T.S.
DATE: 02/01/2007

DATE: 1/24/2007
FILENAME: P:\2001\1201-1300\2001.1240\Drafting\Roadway\Rehab_A\T_Ramp\Earth_Tech\T_ET0506.dgn

DESIGNED	---/WJE
CHECKED	CSD
DRAWN	CLK
CHECKED	JPD