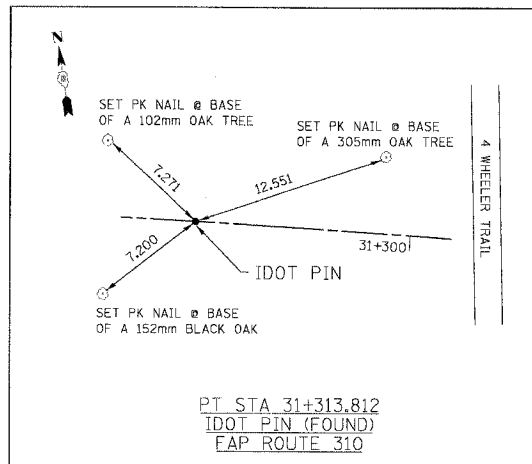
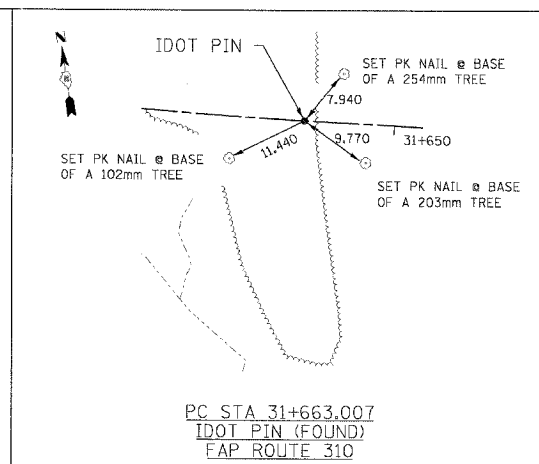


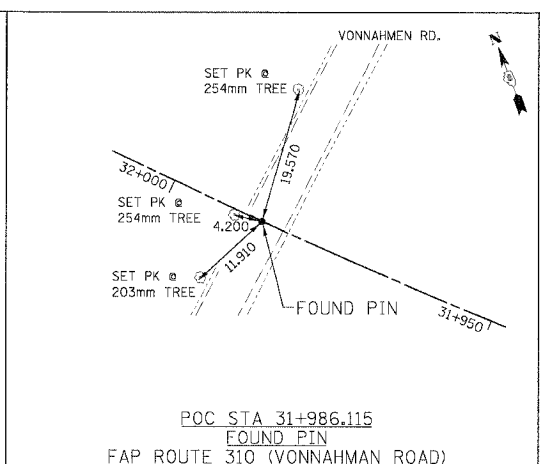
F.A.P. RTE.	SECTION	COUNTY	TOTAL SHEETS	SHEET NO.
310		MADISON	418	23
STA.		TO STA.		
FED. ROAD DIST. NO.		ILLINOIS	FED. AID PROJECT	
SECTION 60-14-2 & 60-14-2B		CONTRACT NO. 76986		



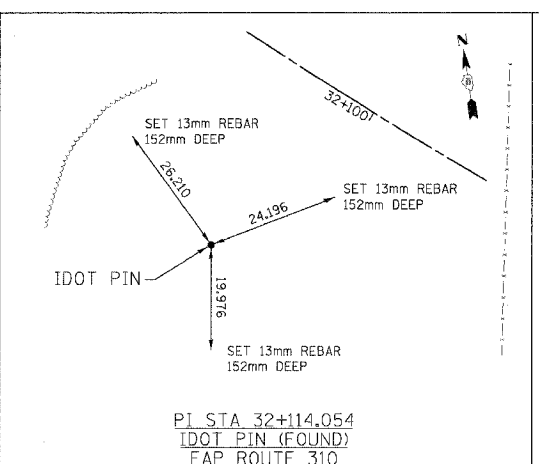
PT STA 31+313.812
IDOT PIN (FOUND)
FAP ROUTE 310



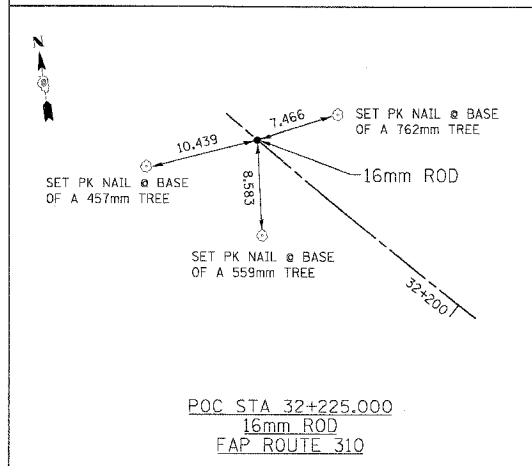
PC STA 31+663.007
IDOT PIN (FOUND)
FAP ROUTE 310



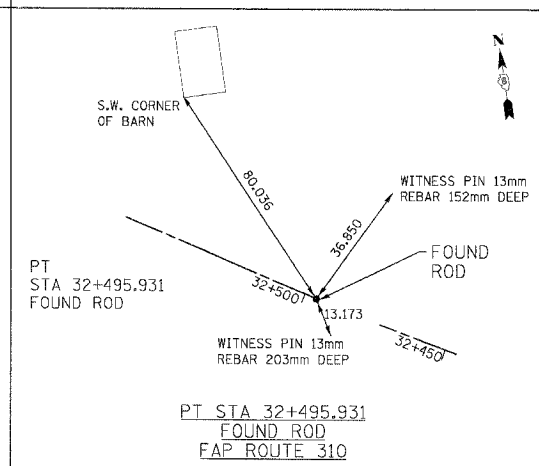
POC STA 31+986.115
FOUND PIN
FAP ROUTE 310 (VONNAHMEN ROAD)



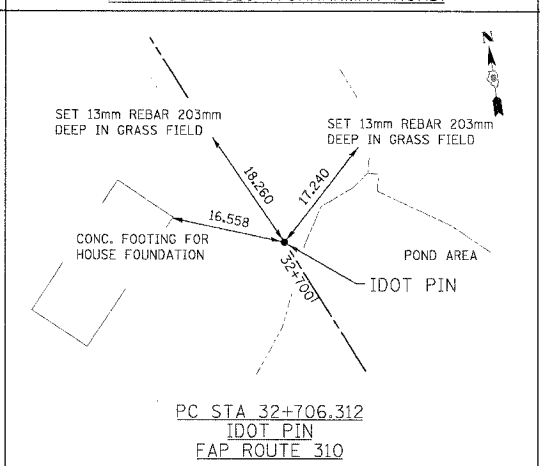
PI STA 32+114.054
IDOT PIN (FOUND)
FAP ROUTE 310



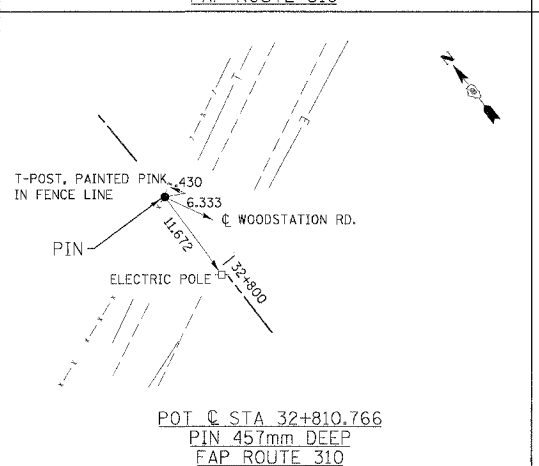
POC STA 32+225.000
16mm ROD
FAP ROUTE 310



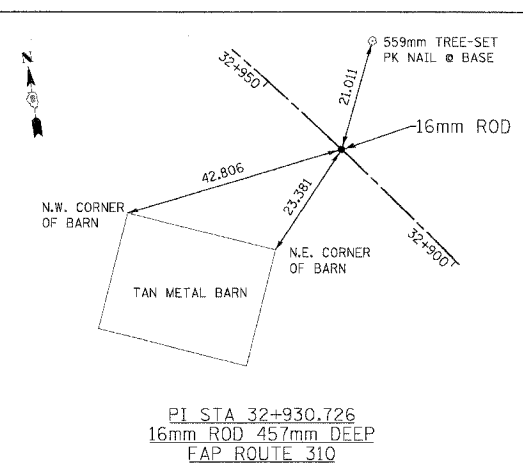
PT STA 32+495.931
FOUND ROD
FAP ROUTE 310



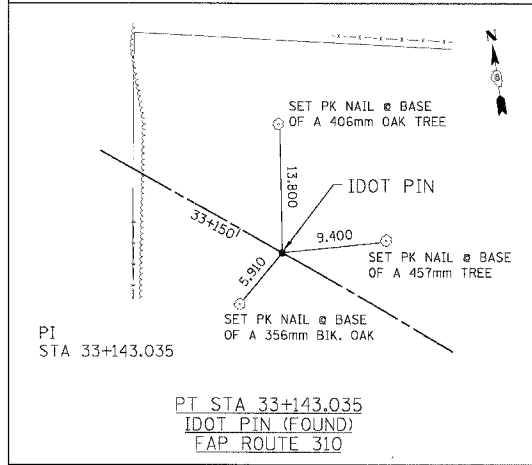
PC STA 32+706.312
IDOT PIN
FAP ROUTE 310



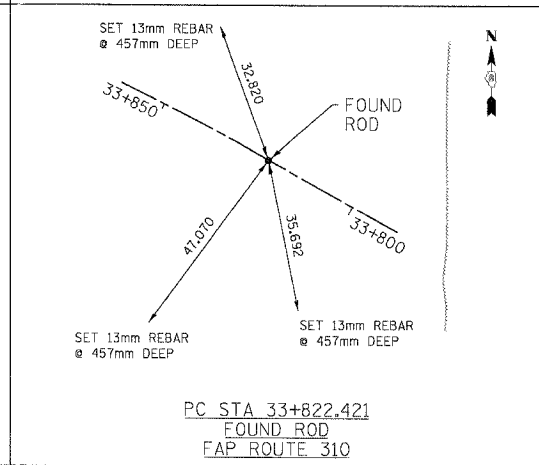
POT STA 32+810.766
PIN 457mm DEEP
FAP ROUTE 310



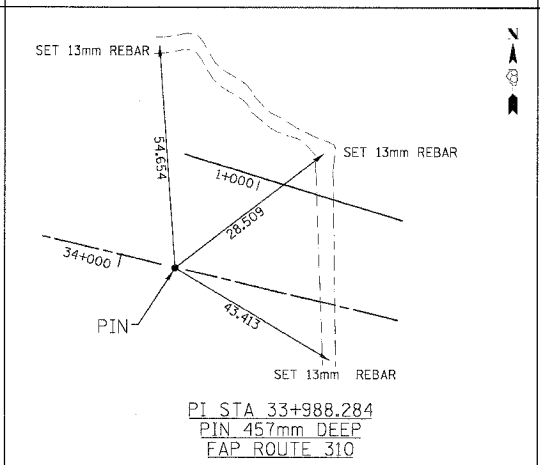
PI STA 32+930.726
16mm ROD 457mm DEEP
FAP ROUTE 310



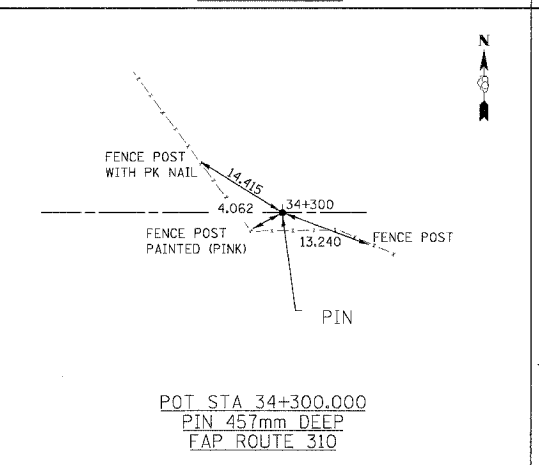
PI STA 33+143.035
IDOT PIN (FOUND)
FAP ROUTE 310



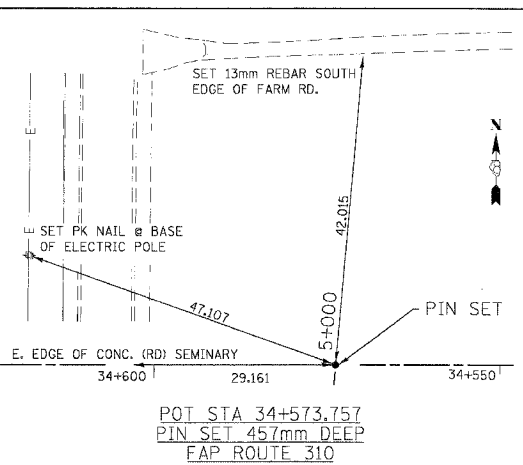
PC STA 33+822.421
FOUND ROD
FAP ROUTE 310



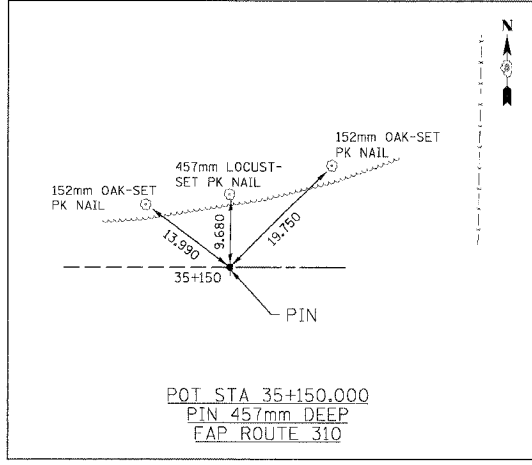
PI STA 33+988.284
PIN 457mm DEEP
FAP ROUTE 310



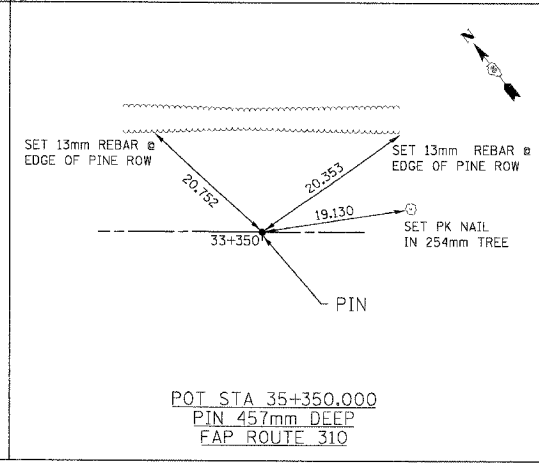
POT STA 34+300.000
PIN 457mm DEEP
FAP ROUTE 310



POT STA 34+573.757
PIN SET 457mm DEEP
FAP ROUTE 310



POT STA 35+150.000
PIN 457mm DEEP
FAP ROUTE 310



POT STA 35+350.000
PIN 457mm DEEP
FAP ROUTE 310

REVISIONS	
NAME	DATE

ILLINOIS DEPARTMENT OF TRANSPORTATION
TIE POINTS
FAP ROUTE 310
FAP ROUTE 310 SECTION 60-14-2, 60-14-2B
MADISON COUNTY
DRAWN BY CLARK
CHECKED BY STEUART
DATE

17/19/2007 11:48:05 AM