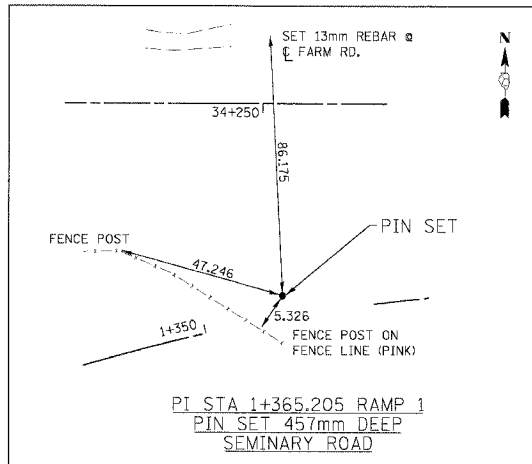
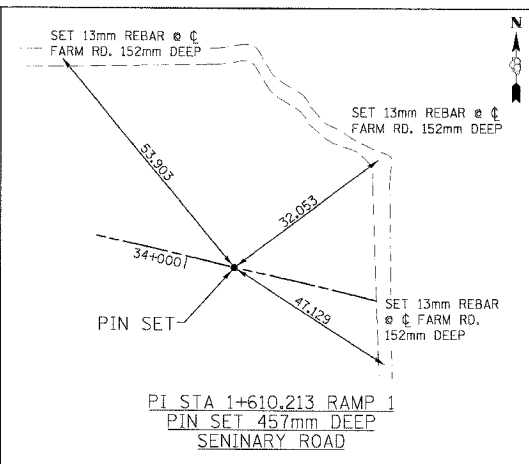


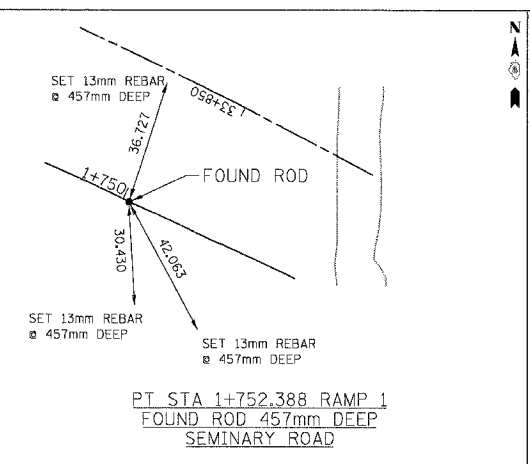
F.A.P. RTE.	SECTION	COUNTY	TOTAL SHEETS	SHEET NO.
310		MADISON	418	24
STA.		TO STA.		
FED. ROAD DIST. NO.		ILLINOIS FED. AID PROJECT		
SECTION 60-14-2 & 60-14-2B		CONTRACT NO. 76986		



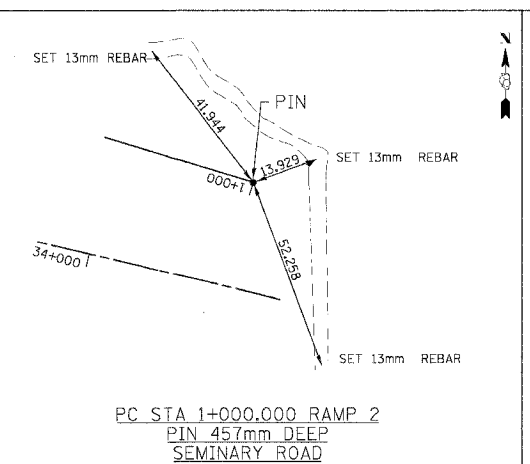
PI STA 1+365.205 RAMP 1
 PIN SET 457mm DEEP
 SEMINARY ROAD



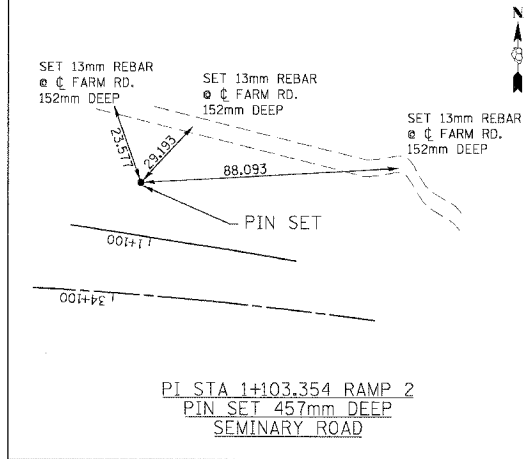
PI STA 1+610.213 RAMP 1
 PIN SET 457mm DEEP
 SEMINARY ROAD



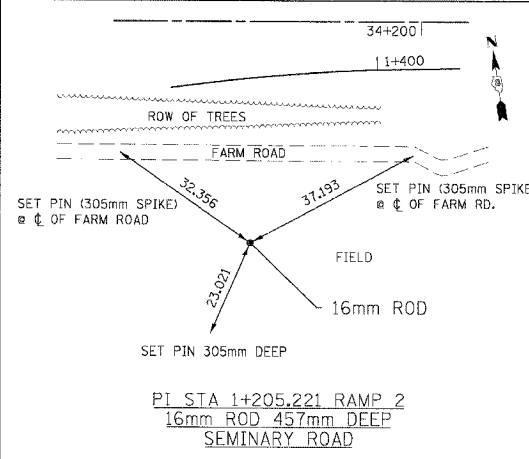
PT STA 1+752.388 RAMP 1
 FOUND ROD 457mm DEEP
 SEMINARY ROAD



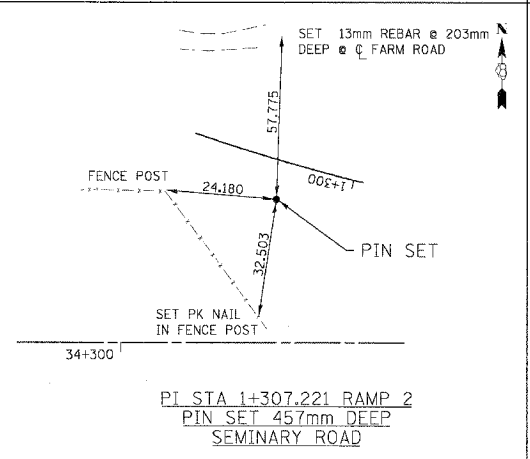
PC STA 1+000.000 RAMP 2
 PIN 457mm DEEP
 SEMINARY ROAD



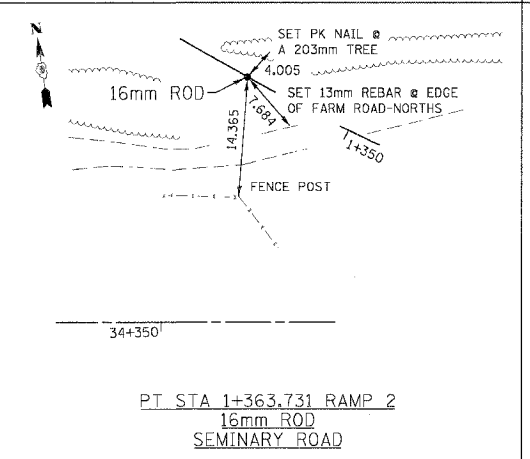
PI STA 1+103.354 RAMP 2
 PIN SET 457mm DEEP
 SEMINARY ROAD



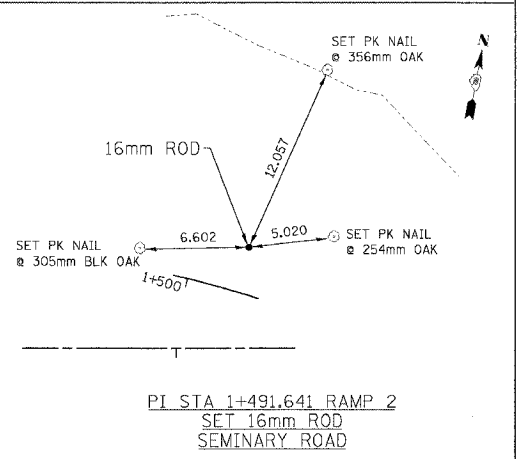
PI STA 1+205.221 RAMP 2
 16mm ROD 457mm DEEP
 SEMINARY ROAD



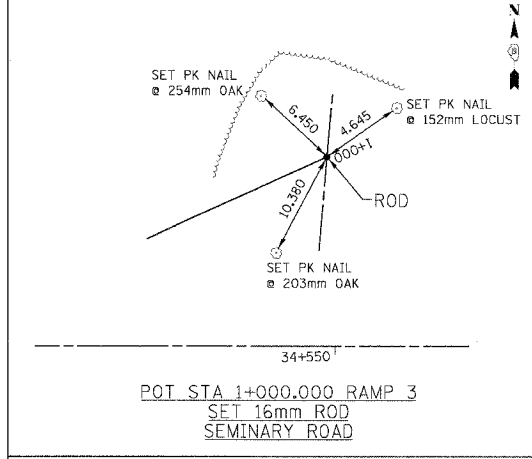
PI STA 1+307.221 RAMP 2
 PIN SET 457mm DEEP
 SEMINARY ROAD



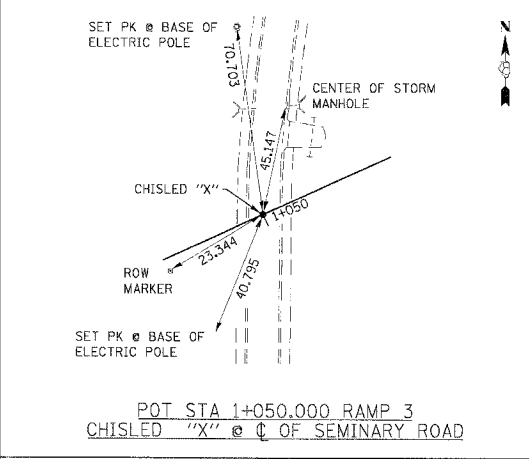
PT STA 1+363.731 RAMP 2
 16mm ROD
 SEMINARY ROAD



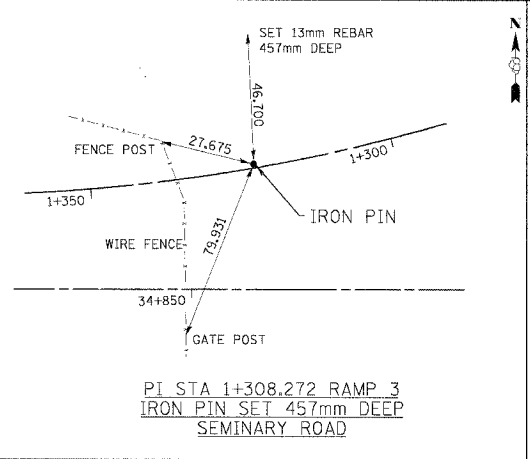
PI STA 1+491.641 RAMP 2
 SET 16mm ROD
 SEMINARY ROAD



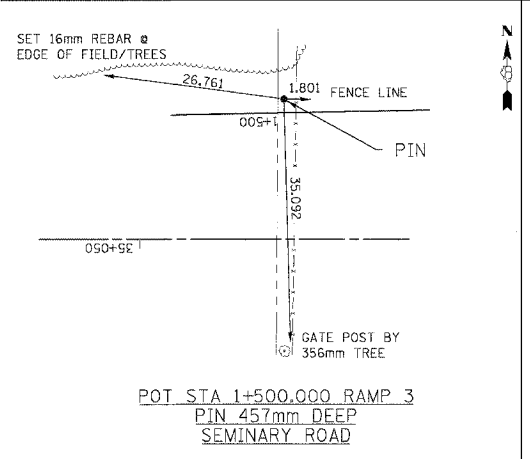
POT STA 1+000.000 RAMP 3
 SET 16mm ROD
 SEMINARY ROAD



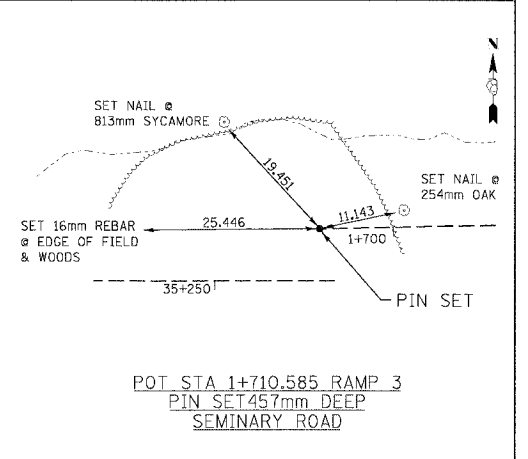
POT STA 1+050.000 RAMP 3
 CHISLED "X" @ FARM RD.
 SEMINARY ROAD



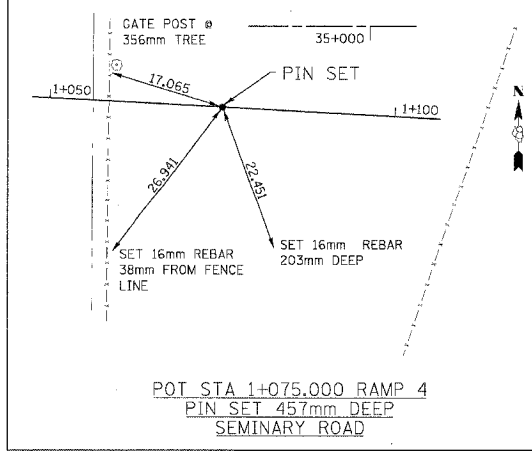
PI STA 1+308.272 RAMP 3
 IRON PIN SET 457mm DEEP
 SEMINARY ROAD



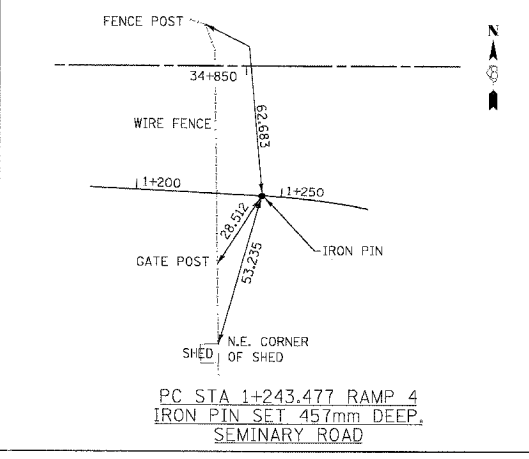
POT STA 1+500.000 RAMP 3
 PIN 457mm DEEP
 SEMINARY ROAD



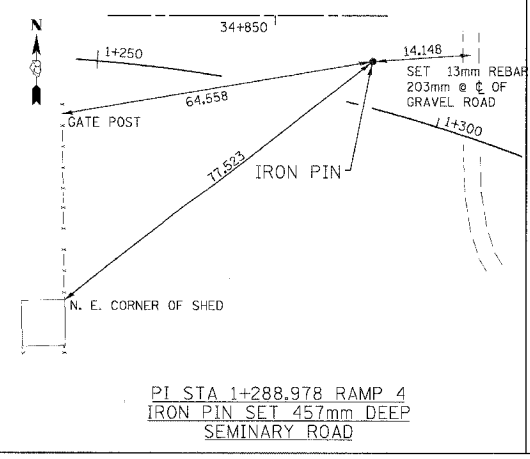
POT STA 1+710.585 RAMP 3
 PIN SET 457mm DEEP
 SEMINARY ROAD



POT STA 1+075.000 RAMP 4
 PIN SET 457mm DEEP
 SEMINARY ROAD



PC STA 1+243.477 RAMP 4
 IRON PIN SET 457mm DEEP
 SEMINARY ROAD



PI STA 1+288.978 RAMP 4
 IRON PIN SET 457mm DEEP
 SEMINARY ROAD

REVISIONS	
NAME	DATE

ILLINOIS DEPARTMENT OF TRANSPORTATION
TIE POINTS
 FAP ROUTE 310
 FAP ROUTE 310 SECTION 60-14-2, 60-14-2B
 MADISON COUNTY
 DRAWN BY CLARK
 CHECKED BY STEUART
 DATE