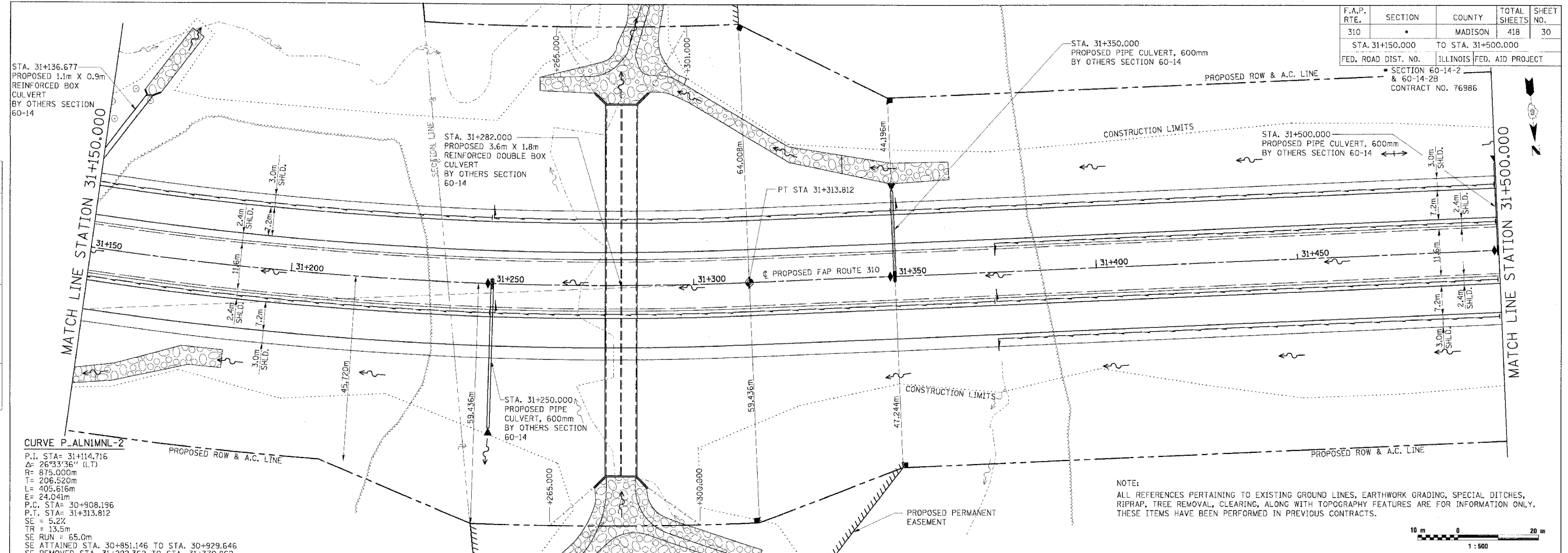
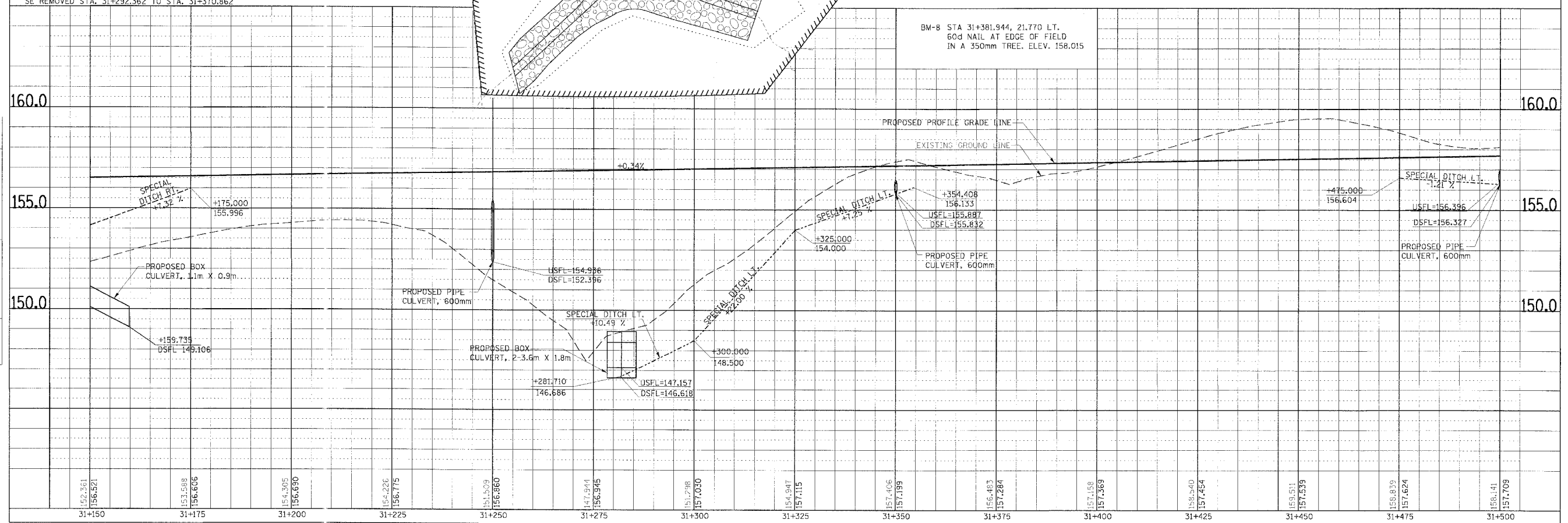


F.A.P. RTE.	SECTION	COUNTY	TOTAL SHEETS	SHEET NO.
310		MADISON	418	30
STA. 31+150.000 TO STA. 31+500.000				
FED. ROAD DIST. NO.	ILLINOIS	FED. AID PROJECT		
SECTION 60-14-2 & 60-14-2B		CONTRACT NO. 76986		



NOTE:
ALL REFERENCES PERTAINING TO EXISTING GROUND LINES, EARTHWORK GRADING, SPECIAL DITCHES, RIPRAP, TREE REMOVAL, CLEARING, ALONG WITH TOPOGRAPHY FEATURES ARE FOR INFORMATION ONLY. THESE ITEMS HAVE BEEN PERFORMED IN PREVIOUS CONTRACTS.



PLAN & PROFILE, FAP ROUTE 310, STA. 31+150.000 TO STA. 31+500.000

DATE	BY

ORIGINAL SURVEYED
SURVILY FLOTTED
NOTE BOOK TEMPLATE
AREAS CHECKED

DATE	BY

ORIGINAL SURVEYED
SURVILY FLOTTED
NOTE BOOK TEMPLATE
AREAS CHECKED