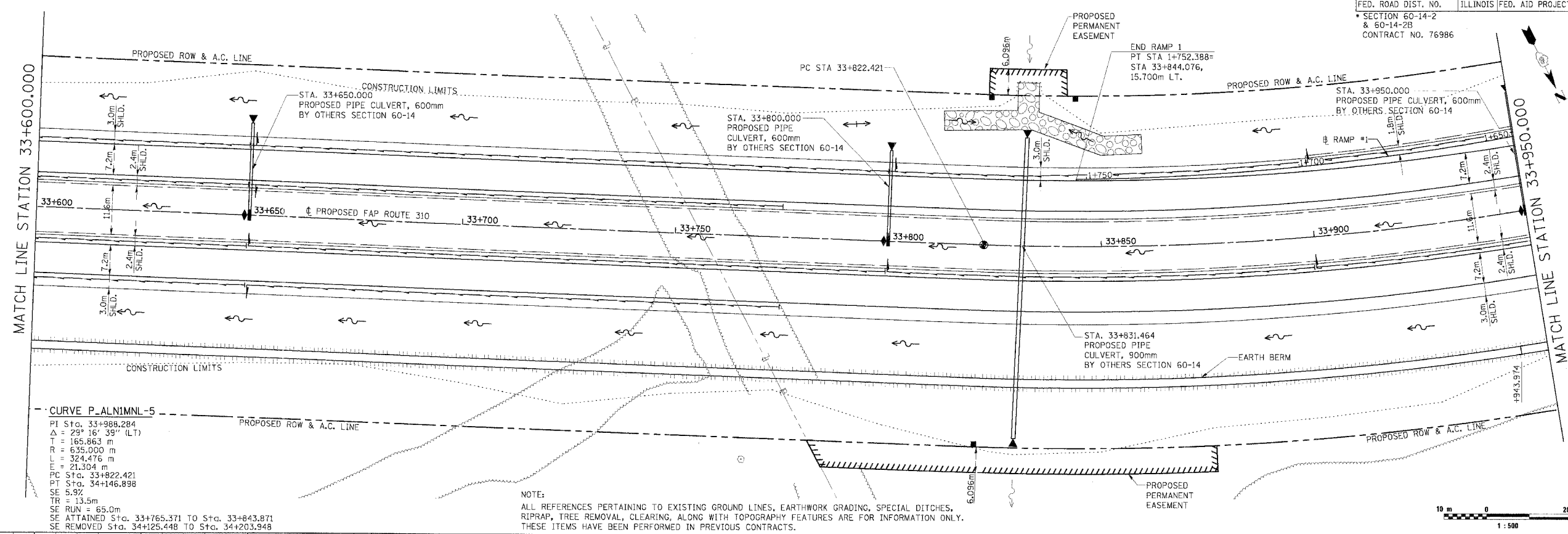
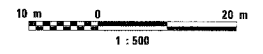


F.A.P. RTE.	SECTION	COUNTY	TOTAL SHEETS	SHEET NO.
310		MADISON	418	37
STA. 33+600.000		TO STA. 33+950.000		
FED. ROAD DIST. NO.		ILLINOIS FED. AID PROJECT		
SECTION 60-14-2 & 60-14-2B		CONTRACT NO. 76986		



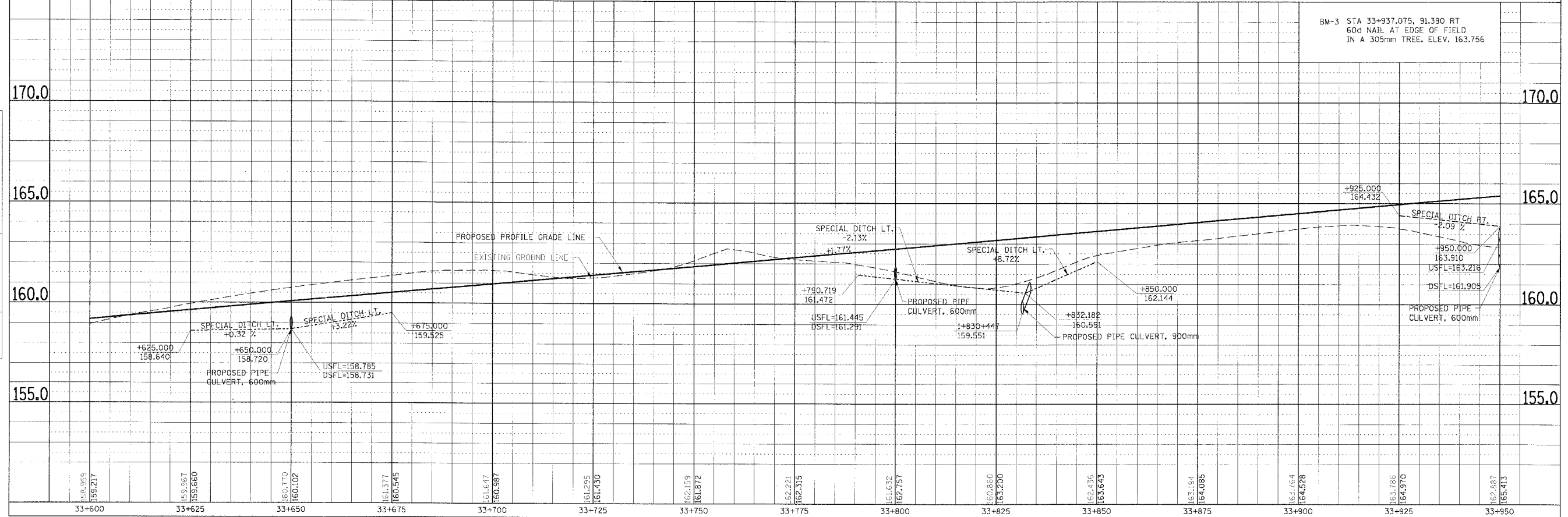
CURVE P-ALNIMNL-5
 PI Sta. 33+988.284
 $\Delta = 29^\circ 16' 39''$ (LT)
 T = 165.863 m
 R = 635.000 m
 L = 324.476 m
 E = 21.304 m
 PC Sta. 33+822.421
 PT Sta. 34+146.898
 SE 5.9%
 TR = 13.5m
 SE RUN = 65.0m
 SE ATTAINED Sta. 33+765.371 TO Sta. 33+843.871
 SE REMOVED Sta. 34+125.448 TO Sta. 34+203.948

NOTE:
 ALL REFERENCES PERTAINING TO EXISTING GROUND LINES, EARTHWORK GRADING, SPECIAL DITCHES, RIPRAP, TREE REMOVAL, CLEARING, ALONG WITH TOPOGRAPHY FEATURES ARE FOR INFORMATION ONLY. THESE ITEMS HAVE BEEN PERFORMED IN PREVIOUS CONTRACTS.



FINAL SURVEY	SURVEYED	BY	DATE
NOTE BOOK	PLOTTED		
NO.	NO.	NO.	NO.
	AREAS CHECKED		

ORIGINAL SURVEY	SURVEYED	BY	DATE
NOTE BOOK	PLOTTED		
NO.	NO.	NO.	NO.
	AREAS CHECKED		



PLAN & PROFILE, FAP ROUTE 310, STA. 33+600.000 TO STA. 33+950.000