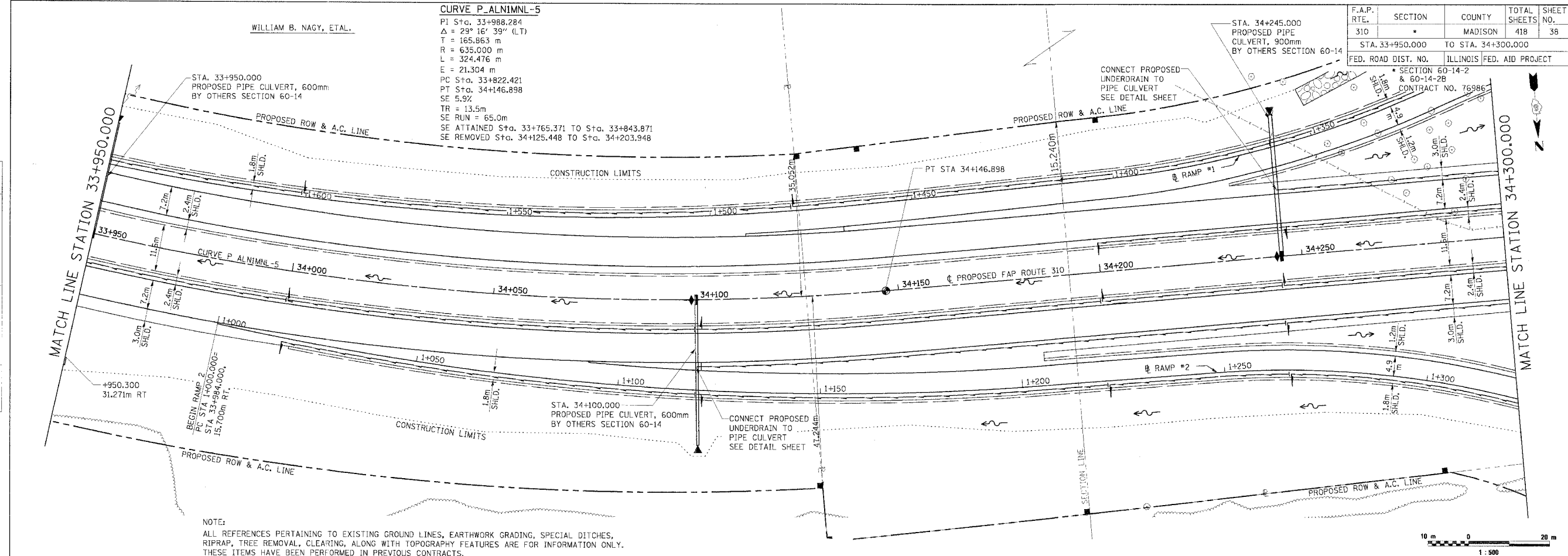


WILLIAM B. NAGY, ETAL.

CURVE P\_ALNIMNL-5

PI Sta. 33+988.284  
Δ = 29° 16' 39" (L.T.)  
T = 165.863 m  
R = 635.000 m  
L = 324.476 m  
E = 21.304 m  
PC Sta. 33+822.421  
PT Sta. 34+146.898  
SE 5.9%  
TR = 13.5m  
SE RUN = 65.0m  
SE ATTAINED Sta. 33+765.371 TO Sta. 33+843.871  
SE REMOVED Sta. 34+125.448 TO Sta. 34+203.948

F.A.P. RTE.	SECTION	COUNTY	TOTAL SHEETS	SHEET NO.
310		MADISON	418	38
STA. 33+950.000		TO STA. 34+300.000		
FED. ROAD DIST. NO.		ILLINOIS FED. AID PROJECT		
		SECTION 60-14-2 & 60-14-2B CONTRACT NO. 76986		



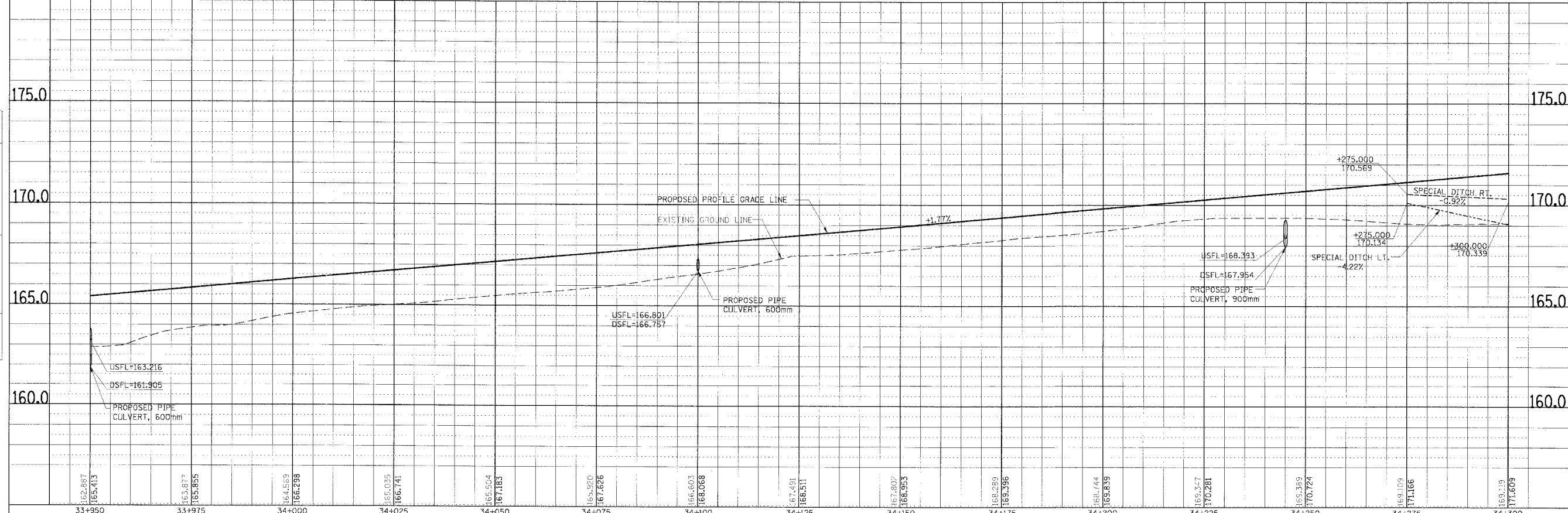
NOTE:  
ALL REFERENCES PERTAINING TO EXISTING GROUND LINES, EARTHWORK GRADING, SPECIAL DITCHES, RIPRAP, TREE REMOVAL, CLEARING, ALONG WITH TOPOGRAPHY FEATURES ARE FOR INFORMATION ONLY. THESE ITEMS HAVE BEEN PERFORMED IN PREVIOUS CONTRACTS.

DATE	BY

FINAL SURVEY PLOTTED  
NOTE BOOK TEMPLATE AREAS CHECKED  
NO.

DATE	BY

ORIGINAL SURVEY PLOTTED  
NOTE BOOK TEMPLATE AREAS CHECKED  
NO.



PLAN & PROFILE, FAP ROUTE 310, STA. 33+950.000 TO STA. 34+300.000