

F.A. RTE.	SECTION	COUNTY	TOTAL SHEETS	SHEET NO.
310		MADISON	418	46
STA. 1+325.000 TO STA. 1+605.016				

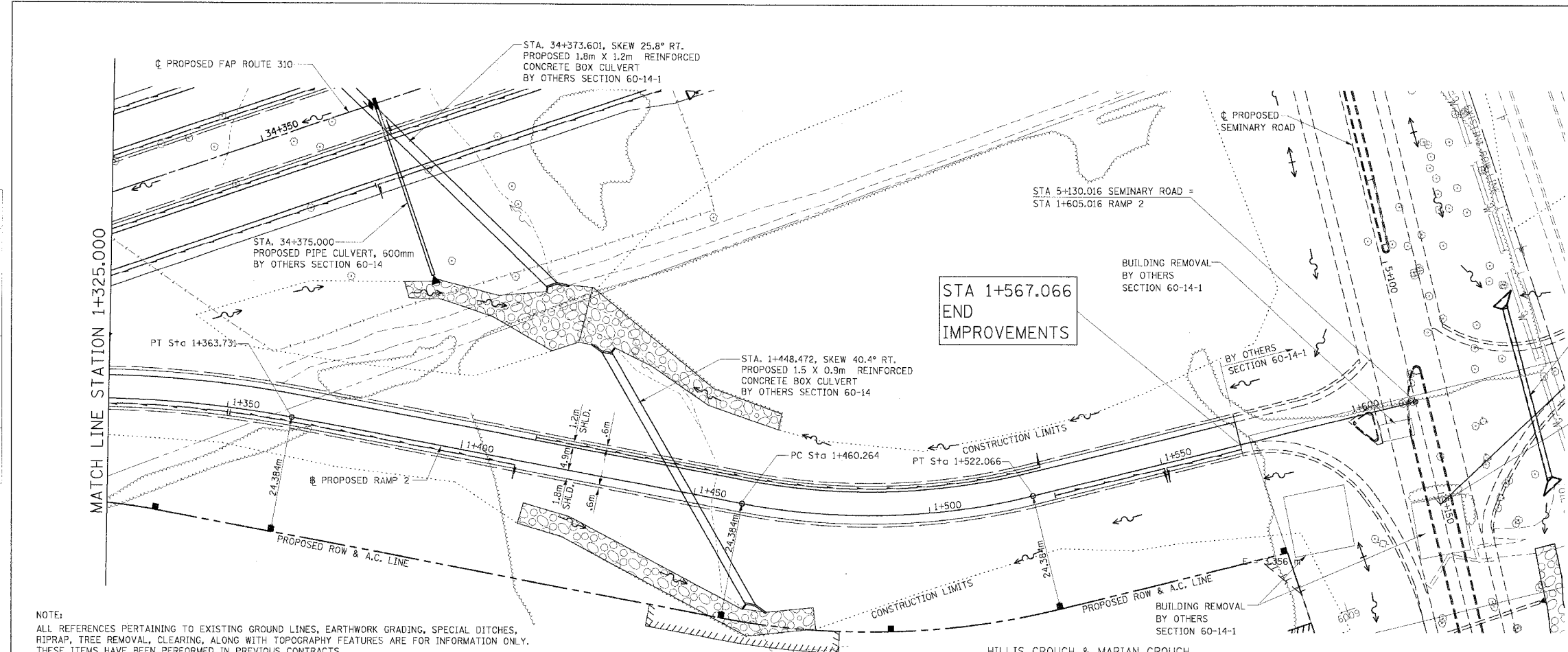
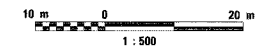
FED. ROAD DIST. NO. ILLINOIS FED. AID PROJECT
 SECTION 60-14-2 & 60-14-2B
 CONTRACT NO. 76986

CURVE P_RMP2MNL-2
 PI Sta. 1+307.221
 $\Delta = 28^\circ 46' 29.6''$ (RT)
 T = 59.000 m
 R = 230.000 m
 L = 115.510 m
 E = 7.447 m
 PC Sta. 1+248.221
 PT Sta. 1+363.731
 SE 8.0%
 TR = 18.375 m
 SE RUN = 68.110 m
 SE ATTAINED Sta. 1+000.000 TO Sta. 1+269.221
 SE REMOVED Sta. 1+337.331 TO Sta. 1+417.331

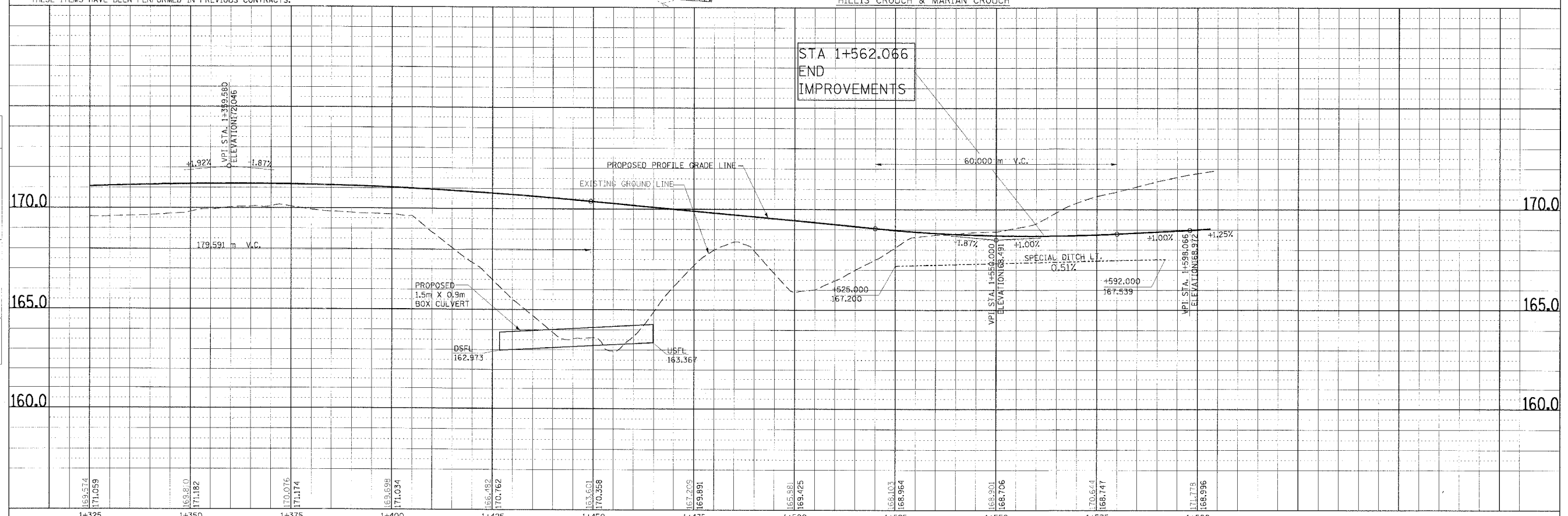
STA. 1+026.914 (RAMP 3)
 PROPOSED PIPE CULVERT, 900mm
 BY OTHERS SECTION 60-14-1

STA. 5+152.192 SEMINARY ROAD =
 STA 1+000.000 RAMP 3

CURVE P_RMP2MNL-3
 PI Sta. 1+491.641
 $\Delta = 24^\circ 25' 14.8''$ (LT)
 T = 31.377 m
 R = 145.000 m
 L = 61.802 m
 E = 3.356 m
 PC Sta. 1+460.264
 PT Sta. 1+522.066
 SE 7.84%
 TR = 18.375 m
 SE RUN = 7.852 m
 SE ATTAINED Sta. 1+417.331 TO Sta. 1+481.714
 SE REMOVED Sta. 1+489.566 TO Sta. 1+554.566



NOTE:
 ALL REFERENCES PERTAINING TO EXISTING GROUND LINES, EARTHWORK GRADING, SPECIAL DITCHES, RIPRAP, TREE REMOVAL, CLEARING, ALONG WITH TOPOGRAPHY FEATURES ARE FOR INFORMATION ONLY. THESE ITEMS HAVE BEEN PERFORMED IN PREVIOUS CONTRACTS.



PLAN & PROFILE, RAMP 2, STA. 1+325.000 TO STA. 1+605.016

DATE	BY	FINAL SURVEY PLOTTED

NOTE: BOOK TEMPLATE NO. AREAS CHECKED

DATE	BY	ORIGINAL SURVEY PLOTTED

NOTE: BOOK TEMPLATE NO. AREAS CHECKED