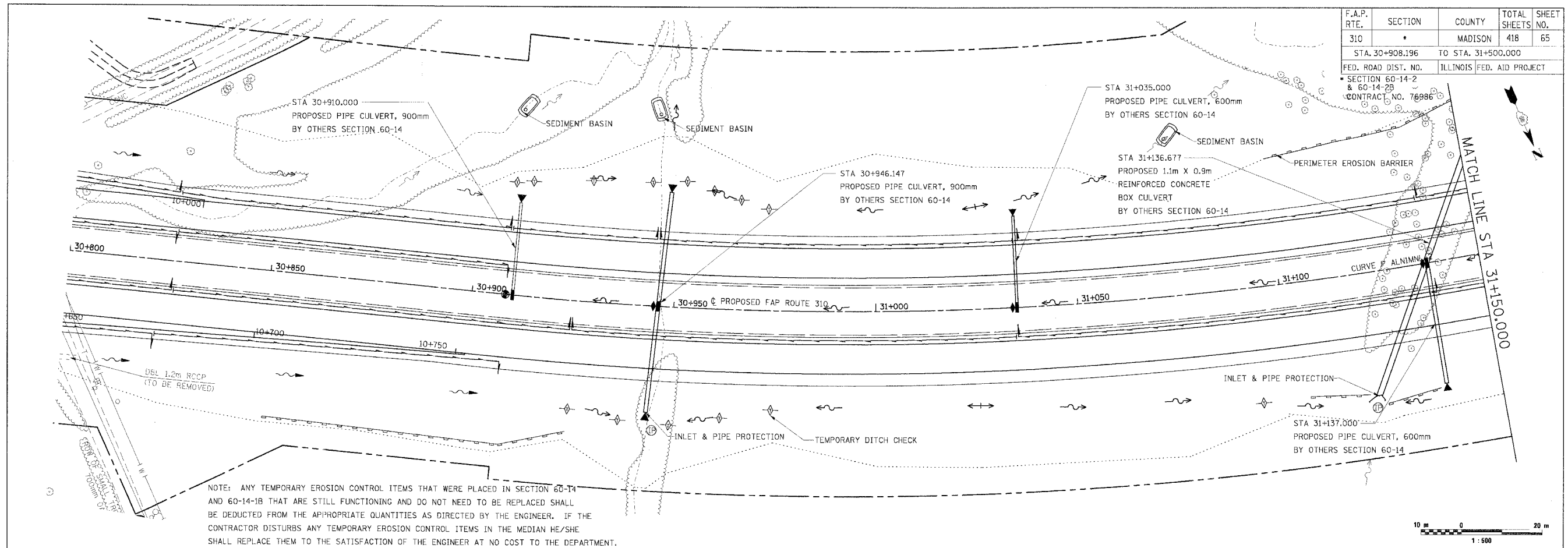
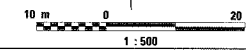
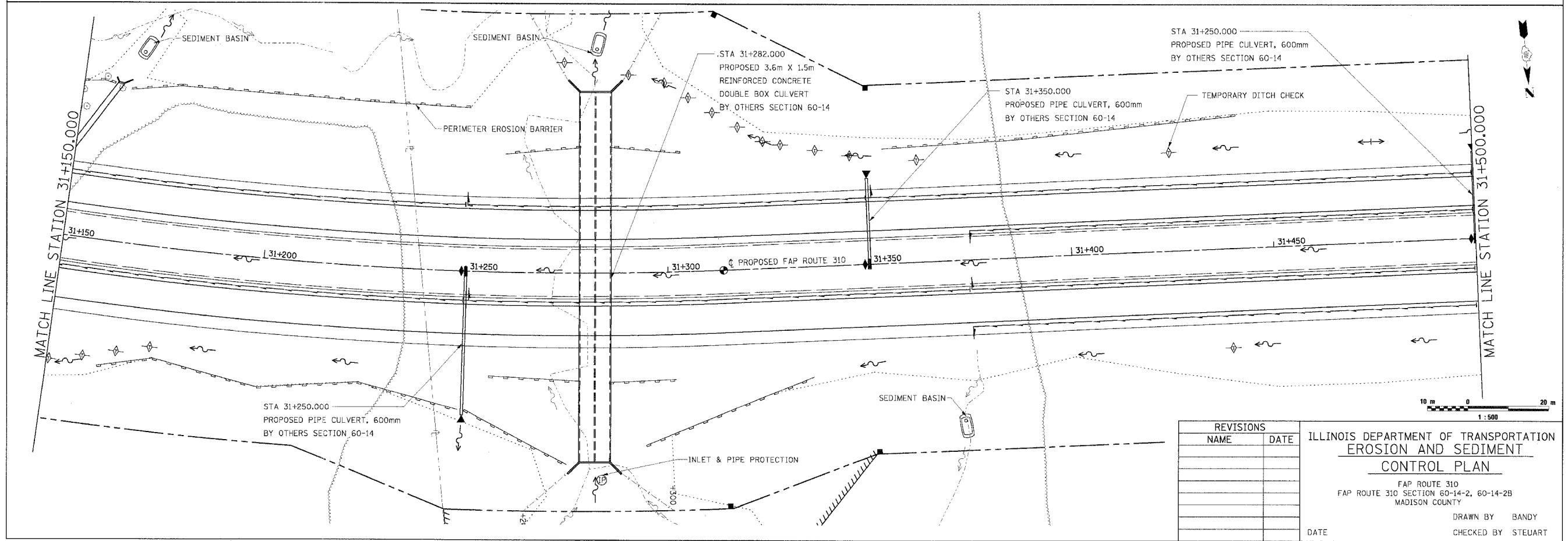
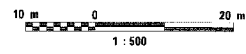


F.A.P. RTE.	SECTION	COUNTY	TOTAL SHEETS	SHEET NO.
310		MADISON	418	65
STA. 30+908.196		TO STA. 31+500.000		
FED. ROAD DIST. NO.	ILLINOIS		FED. AID PROJECT	
SECTION 60-14-2 & 60-14-2B CONTRACT NO. 76986				



NOTE: ANY TEMPORARY EROSION CONTROL ITEMS THAT WERE PLACED IN SECTION 60-14 AND 60-14-1B THAT ARE STILL FUNCTIONING AND DO NOT NEED TO BE REPLACED SHALL BE DEDUCTED FROM THE APPROPRIATE QUANTITIES AS DIRECTED BY THE ENGINEER. IF THE CONTRACTOR DISTURBS ANY TEMPORARY EROSION CONTROL ITEMS IN THE MEDIAN HE/SHE SHALL REPLACE THEM TO THE SATISFACTION OF THE ENGINEER AT NO COST TO THE DEPARTMENT.



REVISIONS	
NAME	DATE

ILLINOIS DEPARTMENT OF TRANSPORTATION
EROSION AND SEDIMENT CONTROL PLAN
 FAP ROUTE 310
 FAP ROUTE 310 SECTION 60-14-2, 60-14-2B
 MADISON COUNTY
 DRAWN BY BANDY
 CHECKED BY STEUART
 DATE

EROSION AND SEDIMENT CONTROL PLAN, FAP ROUTE 310, STA. 30+908.196 TO STA. 31+500.000