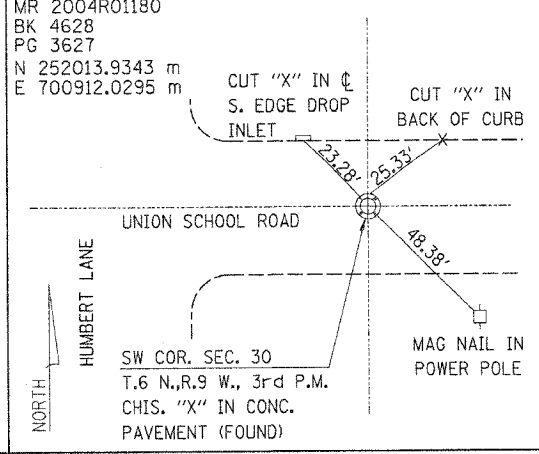
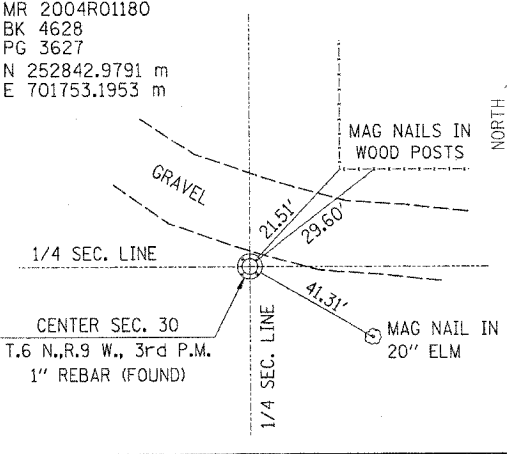
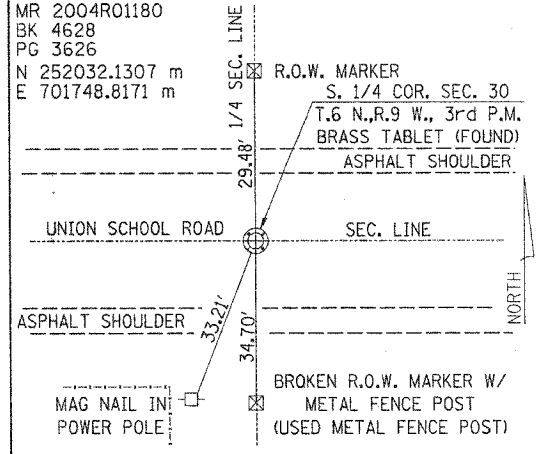
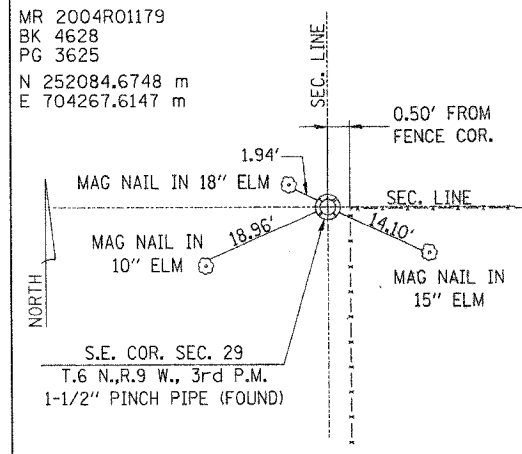
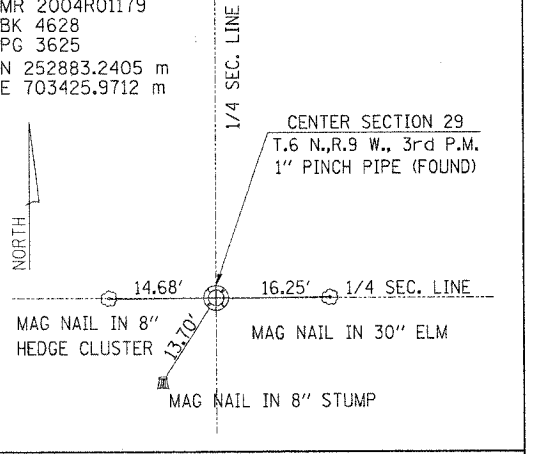
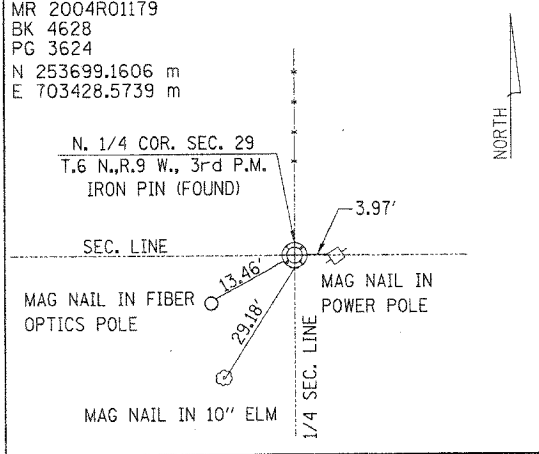
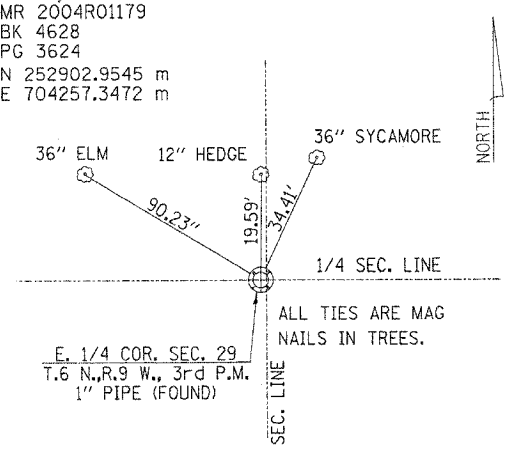
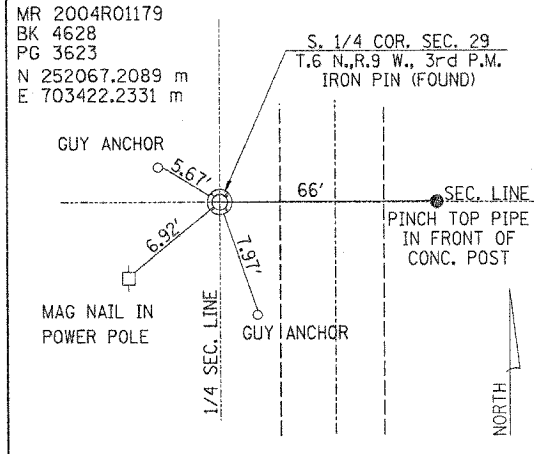
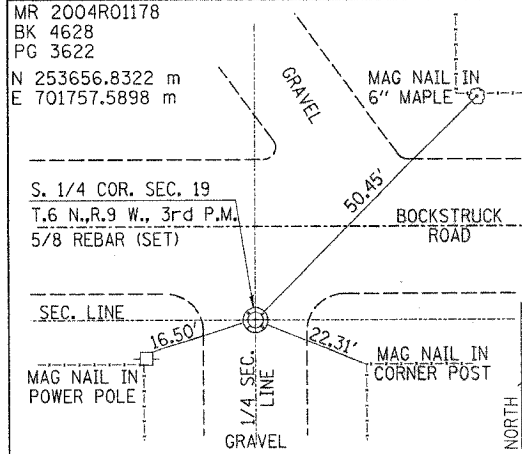
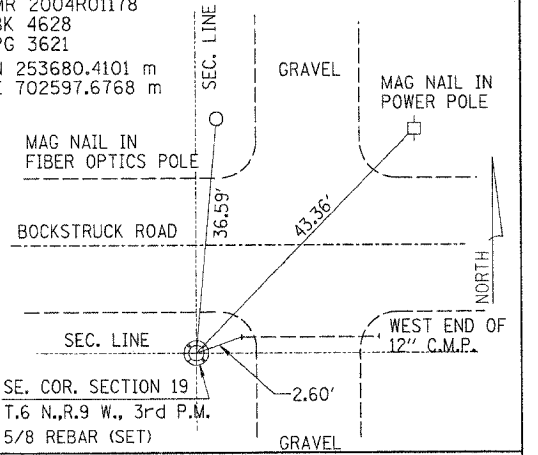
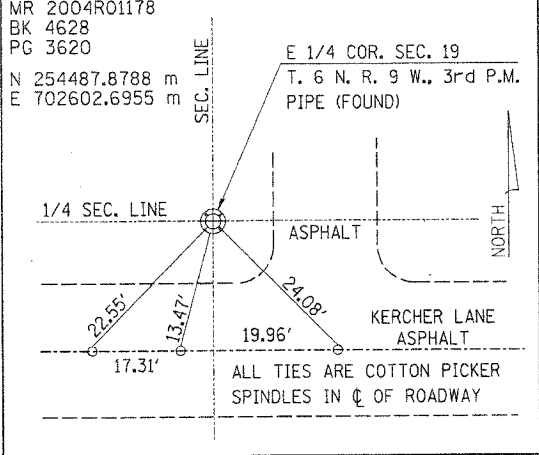
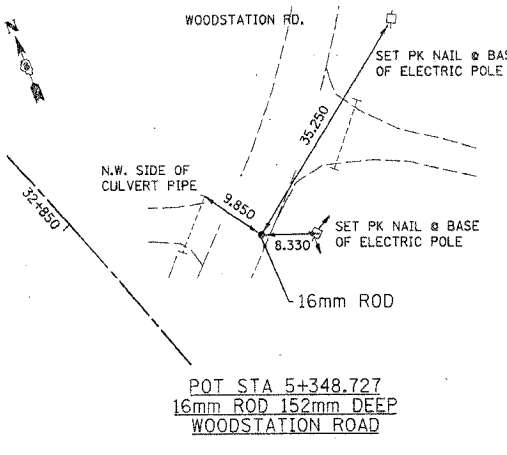
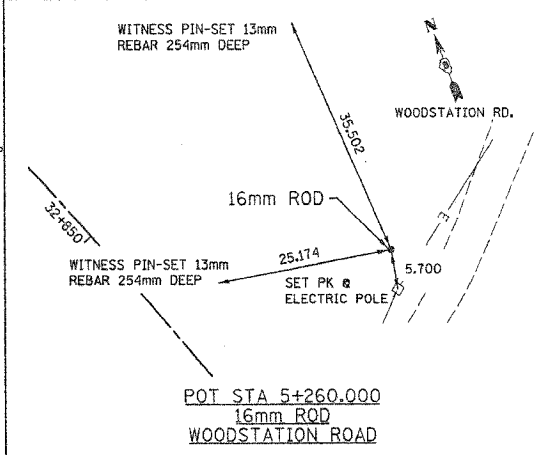
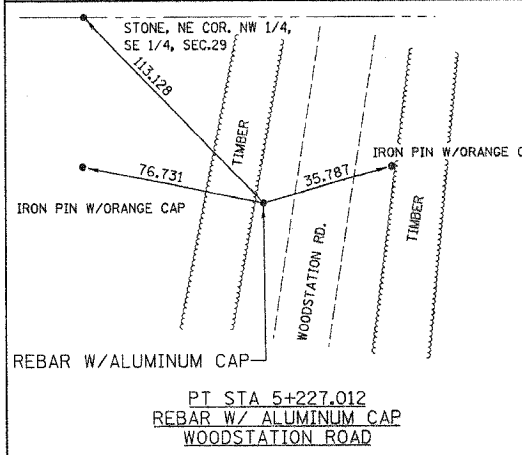
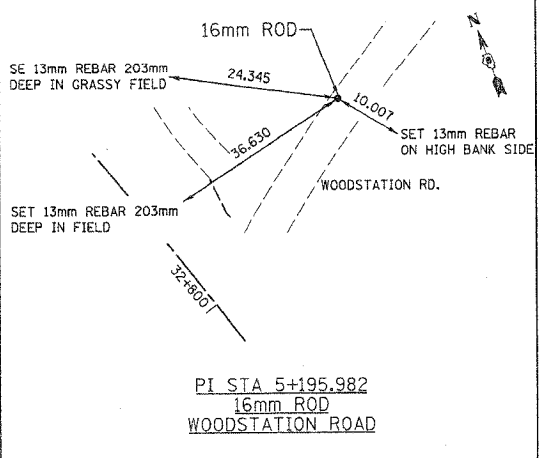
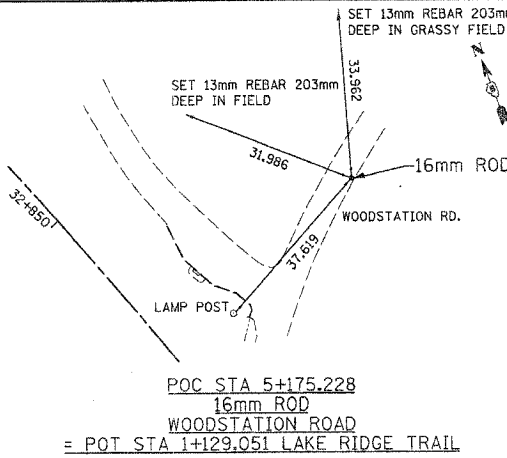
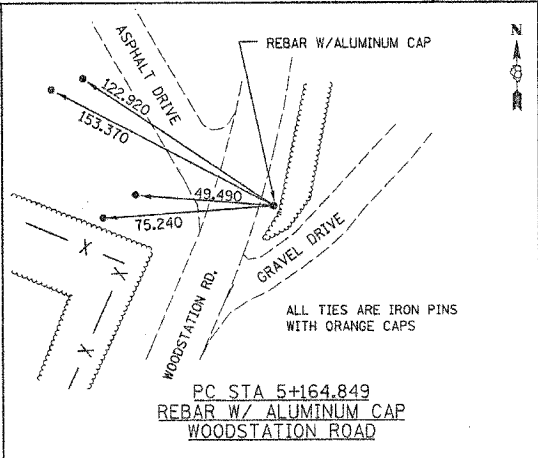
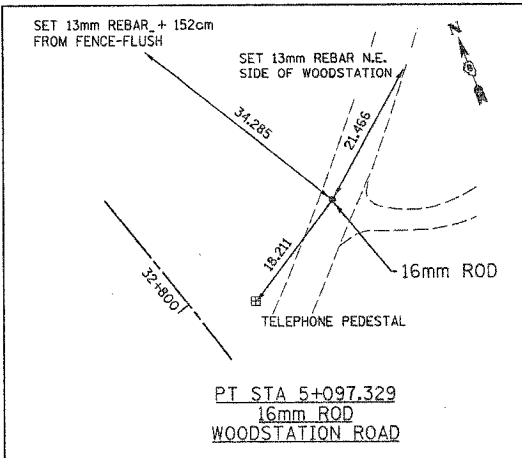


F.A.E. RTE.	SECTION	COUNTY	TOTAL SHEETS	SHEET NO.
310		MADISON	445	93K
STA. _____ TO STA. _____				
FED. ROAD DIST. NO. _____		ILLINOIS FED. AID PROJECT		
SECTION 60-14 SECTION 60-15				



HURST-ROSCHKE ENGINEERS, INC.
2657 W. LAWRENCE - SPRINGFIELD, ILLINOIS 62704
217-787-1899

ILLINOIS DEPARTMENT OF TRANSPORTATION

TIE POINTS

FAP ROUTE 310 (IL 255)
SECTION 60-14 / 60-15
MADISON COUNTY
JOB NO. R-98-038/039-92

SHEET 37 OF 38

ILLINOIS DEPARTMENT OF TRANSPORTATION
DIVISION OF HIGHWAYS/DISTRICT 6
1102 EASTPORT PLAZA DRIVE
COLLINSVILLE, ILLINOIS 62234-6198

IS A COVER SHEET AND IS NOT RECORDED

TIE POINTS, FAP ROUTE 310

DATE: 04/12/2004 06:33:04 AM

PLOT DATE: _____ DATE-TIME: _____