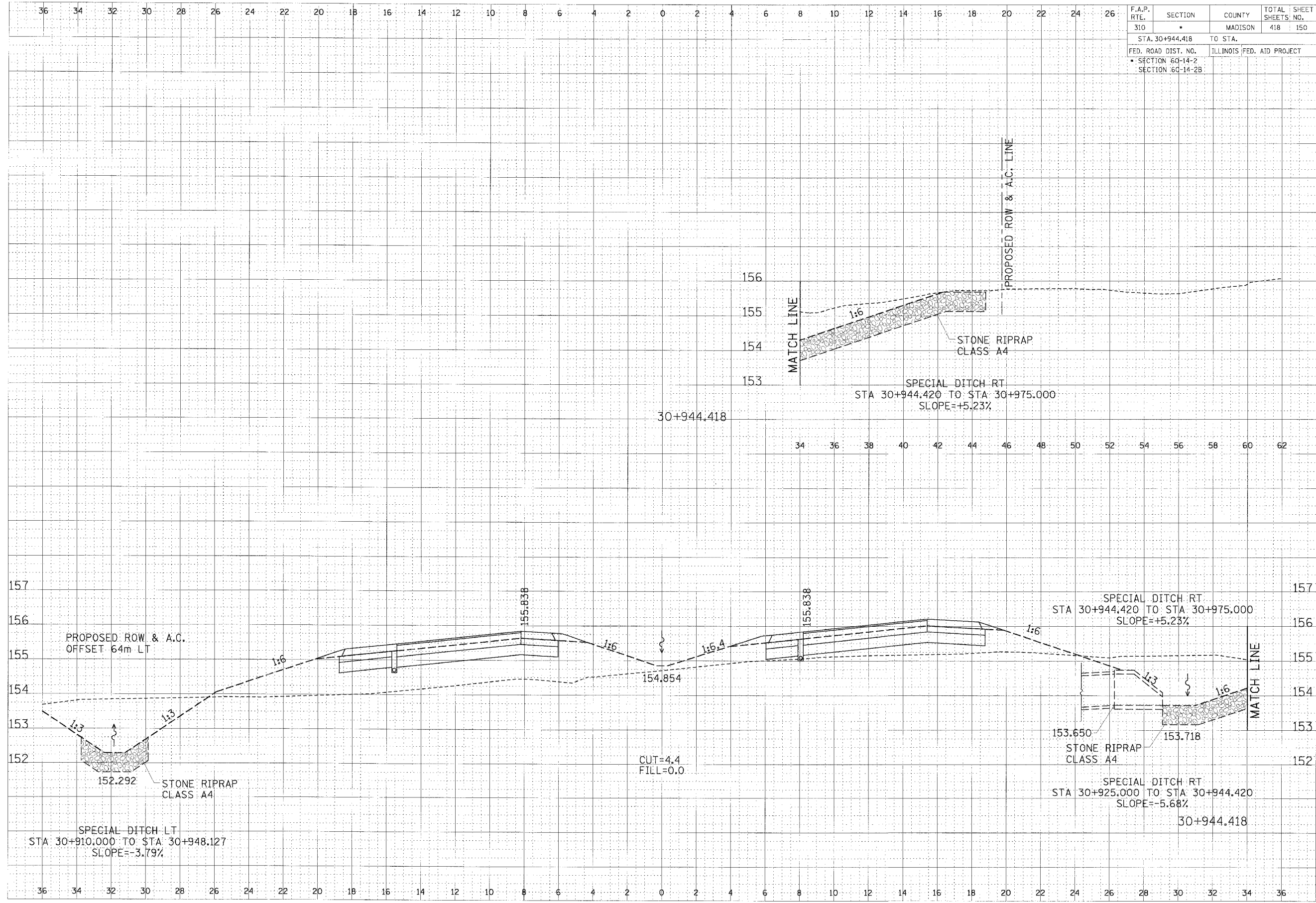


F.A.P. RTE.	SECTION	COUNTY	TOTAL SHEETS NO.
310	*	MADISON	418
STA. 30+944.418 TO STA.		ILLINOIS FED. AID PROJECT	
FED. ROAD DIST. NO.		SECTION 60-14-2	
		SECTION 60-14-2B	

DATE	BY	CHK'D
NO.	NO.	NO.
NO.	NO.	NO.
NO.	NO.	NO.

DATE	BY	CHK'D
NO.	NO.	NO.
NO.	NO.	NO.
NO.	NO.	NO.



CROSS SECTION, FAP ROUTE 310, STA 30+944.418

\\p01\apps\jason\30_jan10.dwg 1/15/2007 1:28:28 PM