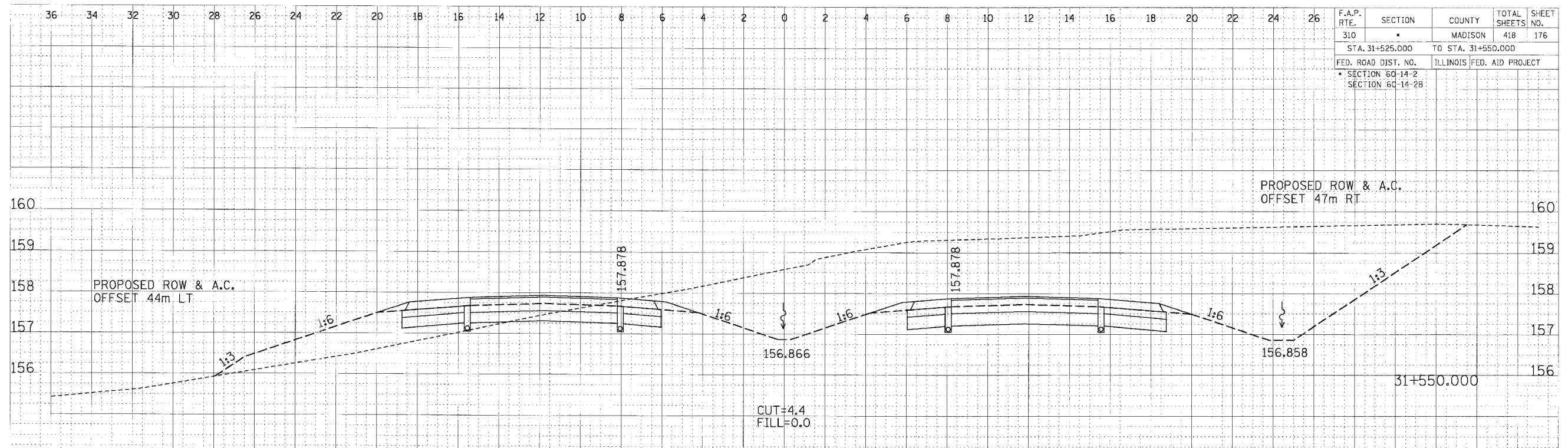
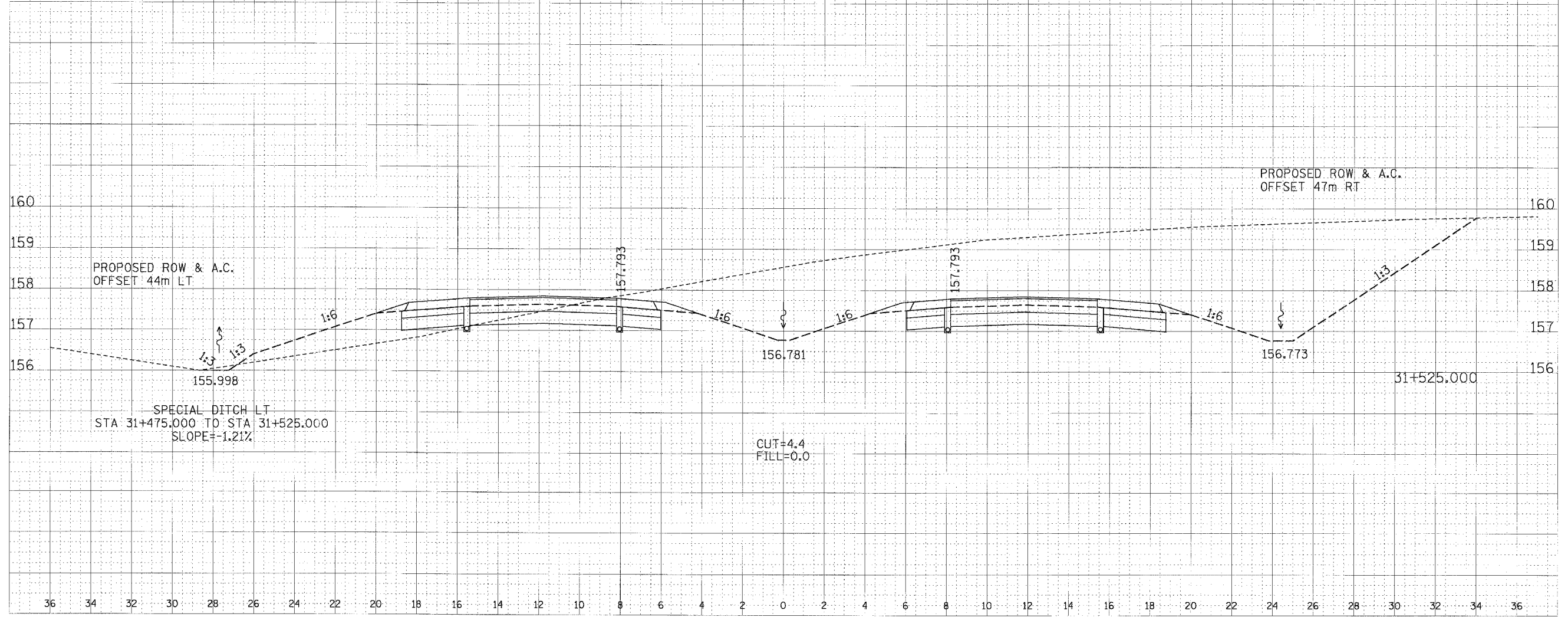


F.A.P. RTE.	SECTION	COUNTY	TOTAL SHEETS	SHEET NO.
310	*	MADISON	418	176
STA. 31+525.000		TO STA. 31+550.000		
FED. ROAD DIST. NO.		ILLINOIS FED. AID PROJECT		
* SECTION 60-14-2		SECTION 60-14-2B		

DATE	BY	APPROVED	DATE
NO.	NO.	NO.	NO.
NO.	NO.	NO.	NO.



DATE	BY	APPROVED	DATE
NO.	NO.	NO.	NO.
NO.	NO.	NO.	NO.



CROSS SECTION, FAP ROUTE 310, STA 31+525.000 TO STA 31+550.000