

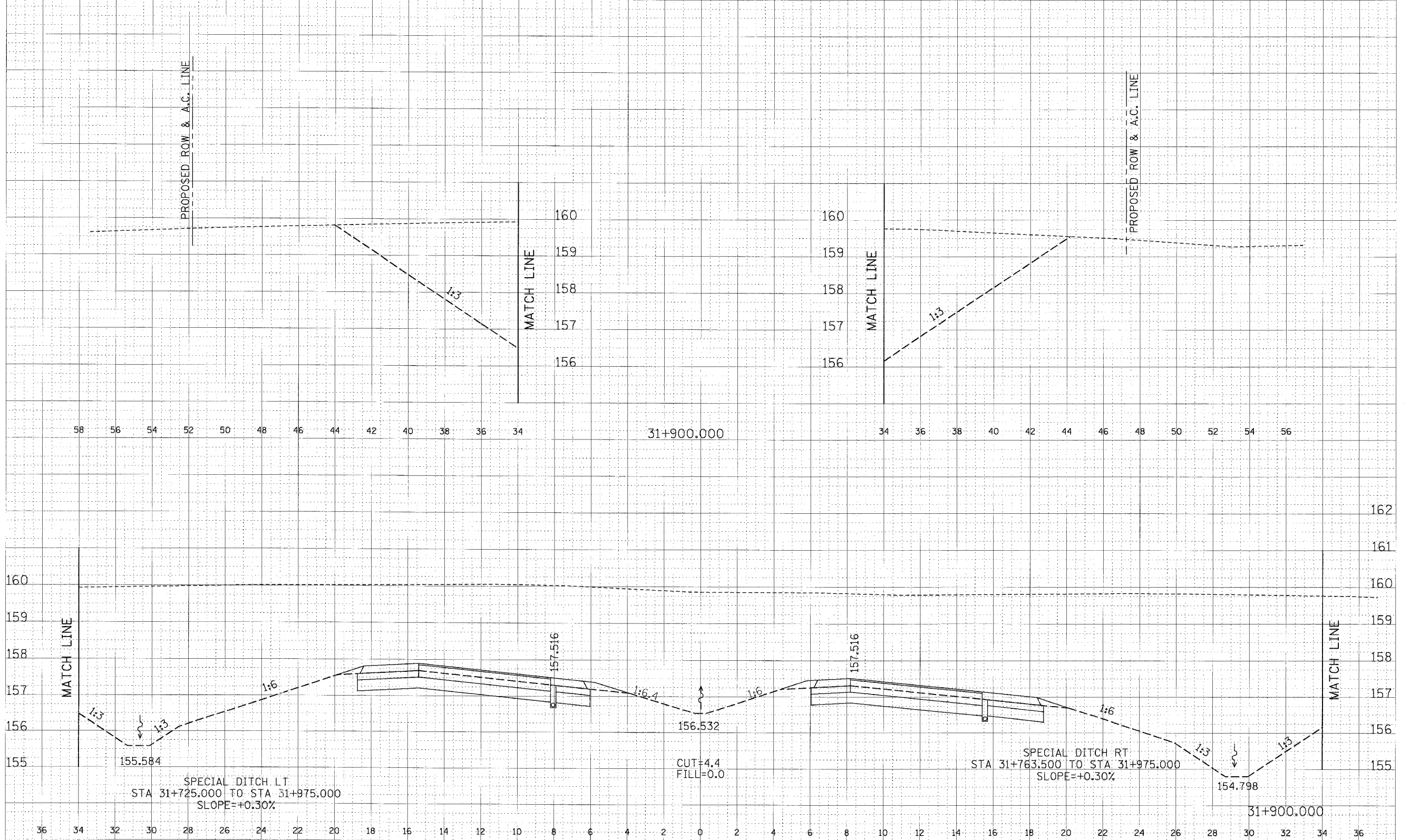
36 34 32 30 28 26 24 22 20 18 16 14 12 10 8 6 4 2 0 2 4 6 8 10 12 14 16 18 20 22 24 26

F.A.P. RTE.	SECTION	COUNTY	TOTAL SHEETS	SHEET NO.
310	*	MADISON	418	193

STA. 31+900.000 TO STA.
 FED. ROAD DIST. NO. ILLINOIS FED. AID PROJECT
 * SECTION 60-14-2
 SECTION 60-14-2B

FINAL SURVEY PLOTTED DATE
 NOTE: HATCH AREAS CHECKED

ORIGINAL SURVEY PLOTTED DATE
 WITH HATCH AREAS CHECKED



CROSS SECTION, FAP ROUTE 310, STA 31+900.000

\\p01\work\highways\110_drawing.dwg 1/19/2007 2:05:22 PM