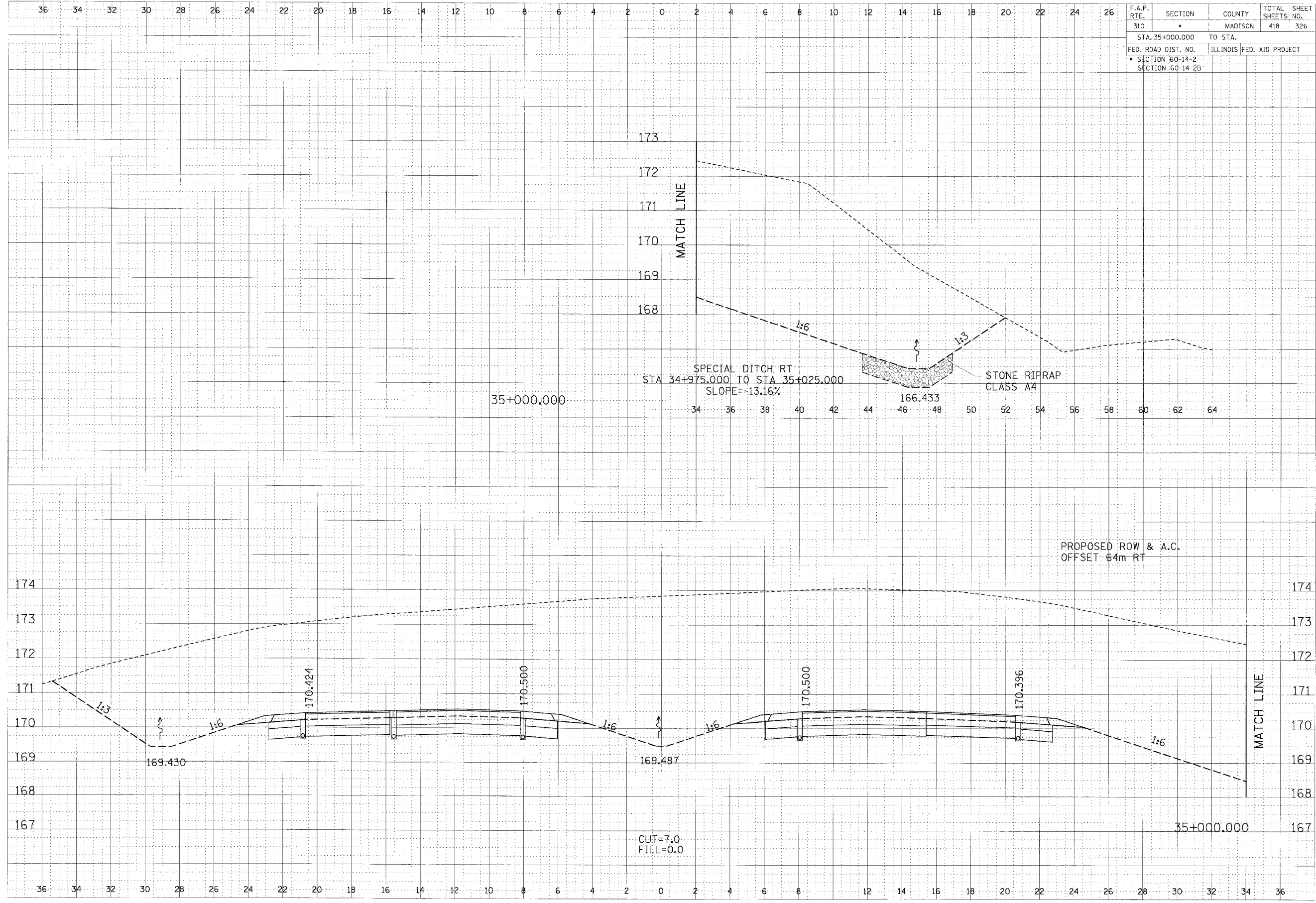


F.A.P. RTE.	SECTION	COUNTY	TOTAL SHEETS	SHEET NO.
310	*	MADISON	418	326
STA. 35+000.000		TO STA.		
FED. ROAD DIST. NO.		ILLINOIS FED. AID PROJECT		
* SECTION 60-14-2		SECTION 60-14-2B		

DATE	BY	CHKD
FINISH SURVEYED	BY	DATE
SHOULDER		
NOTE BOOK		
AREAS		
ADJUSTED		

DATE	BY	CHKD
ORIGINAL SURVEY	BY	DATE
SHOULDER		
NOTE BOOK		
AREAS		
ADJUSTED		



CROSS SECTION, FAP ROUTE 310, STA 35+000.000