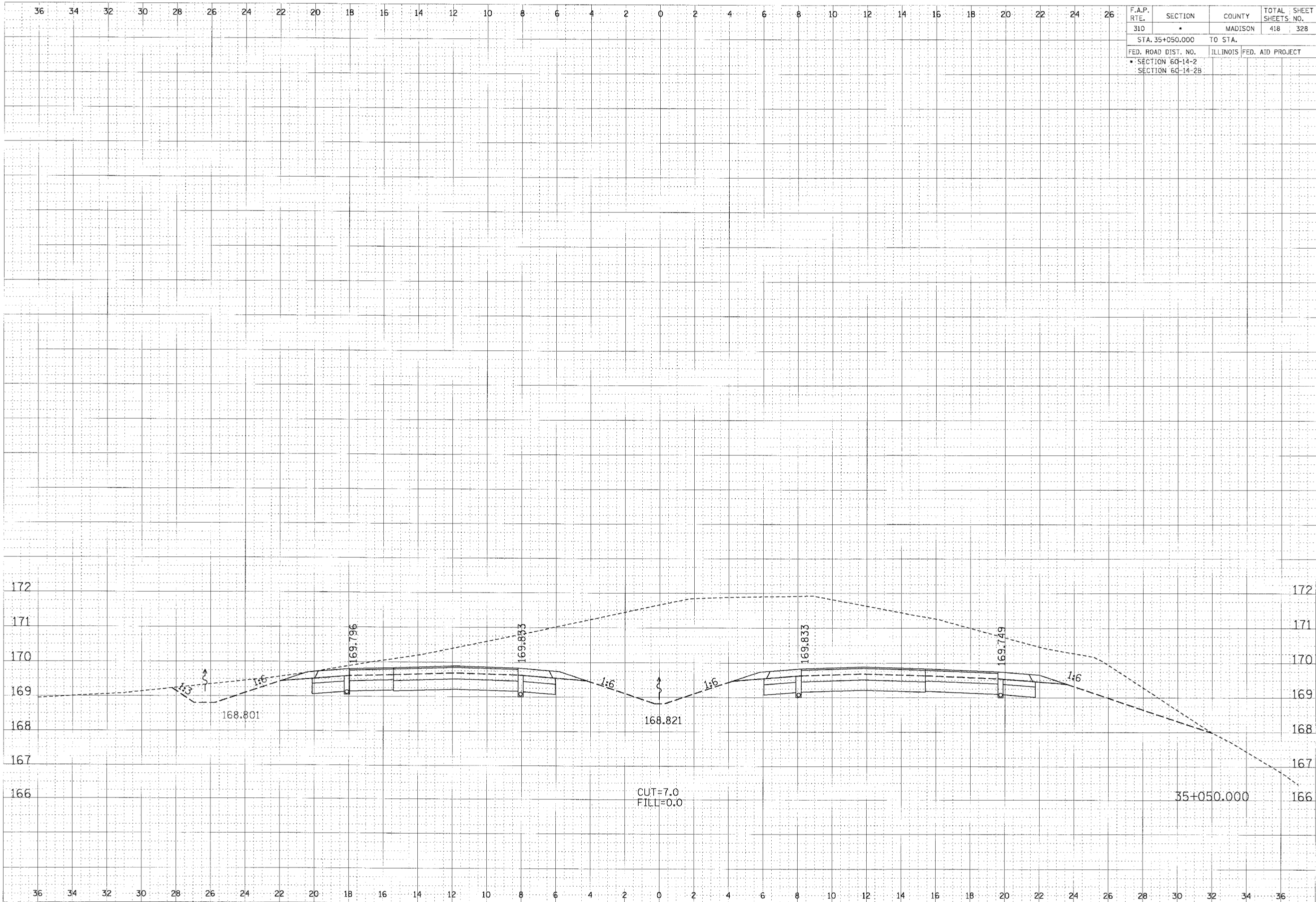


F.A.P. RTE.	SECTION	COUNTY	TOTAL SHEETS NO.
310	*	MADISON	418 328
STA. 35+050.000		TO STA.	
FED. ROAD DIST. NO.	ILLINOIS FED. AID PROJECT		
* SECTION 60-14-2 SECTION 60-14-2B			

FINAL SURVEY	BY	DATE
NOTED WORK		
AREAS CHECKED		
MSD		

ORIGINAL SURVEY	BY	DATE
NOTED WORK		
AREAS CHECKED		
MSD		



CROSS SECTION, FAP ROUTE 310, STA 35+050.000