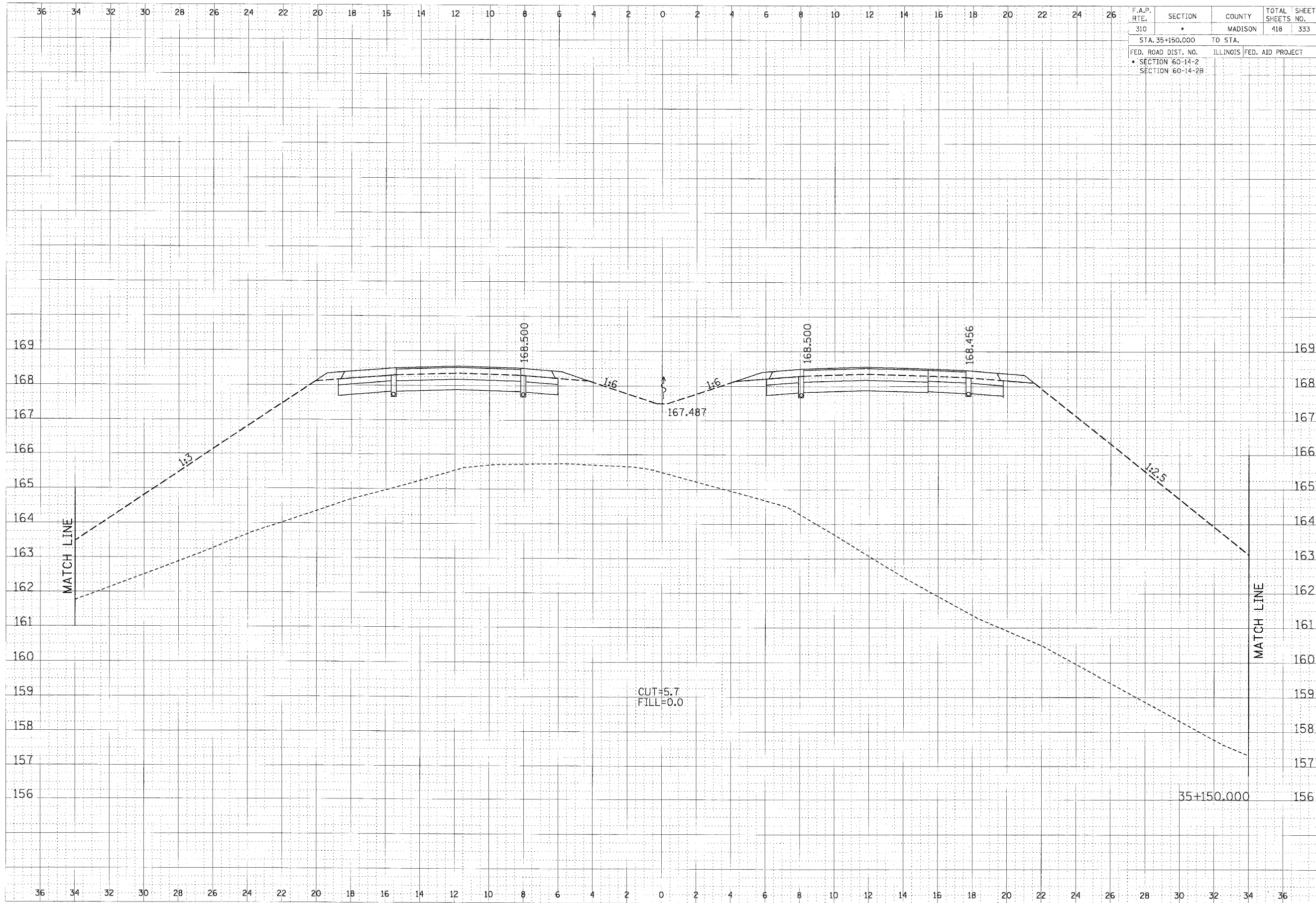


F.A.P. RTE.	SECTION	COUNTY	TOTAL SHEETS	SHEET NO.
310	*	MADISON	418	333
STA. 35+150.000		TO STA.		
FED. ROAD DIST. NO.		ILLINOIS	FED. AID PROJECT	
* SECTION 60-14-2				
SECTION 60-14-2B				



CUT=5.7  
FILL=0.0

FINAL	BY	DATE
DESIGNED		
CHECKED		
APPROVED		
DATE		

ORIGINAL	BY	DATE
DESIGNED		
CHECKED		
APPROVED		
DATE		

CROSS SECTION, FAP ROUTE 310, STA 35+150.000

\\sp\server\p\310\310.dwg, 1/13/2007 3:01:55 PM