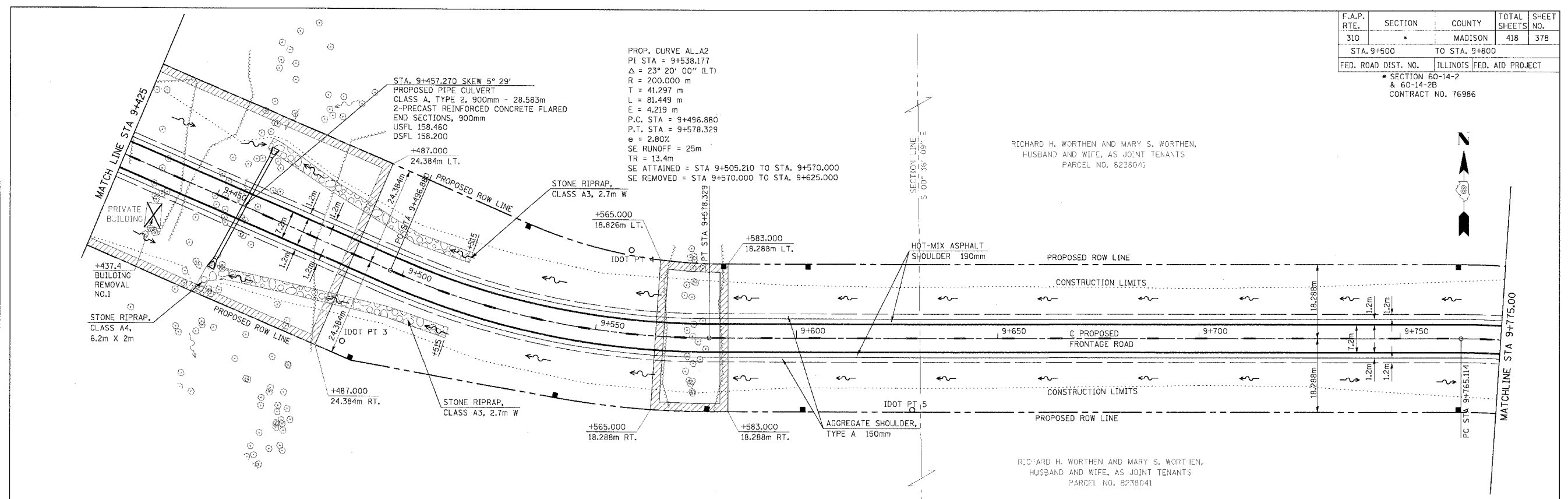


F.A.P. RTE.	SECTION	COUNTY	TOTAL SHEETS	SHEET NO.
310		MADISON	418	378
STA. 9+500		TO STA. 9+800		
FED. ROAD DIST. NO.		ILLINOIS FED. AID PROJECT		
		SECTION 60-14-2 & 60-14-2B CONTRACT NO. 76986		



PROP. CURVE AL-A2
 PI STA = 9+538.177
 $\Delta = 23^\circ 20' 00''$ (LT)
 $R = 200.000$ m
 $T = 41.297$ m
 $L = 81.449$ m
 $E = 4.219$ m
 P.C. STA = 9+496.880
 P.T. STA = 9+578.329
 $e = 2.80\%$
 SE RUNOFF = 25m
 TR = 13.4m
 SE ATTAINED = STA 9+505.210 TO STA. 9+570.000
 SE REMOVED = STA 9+570.000 TO STA. 9+625.000

RICHARD H. WORTHEN AND MARY S. WORTHEN,
 HUSBAND AND WIFE, AS JOINT TENANTS
 PARCEL NO. 8238041

RICHARD H. WORTHEN AND MARY S. WORTHEN,
 HUSBAND AND WIFE, AS JOINT TENANTS
 PARCEL NO. 8238041

IDOT PT 3
 N 251866.297, E 705776.449
 IRON PIN w/CAP

IDOT PT 4
 N 251889.128, E 705848.384
 IRON PIN w/CAP

TBM 102 - RR SPIKE N FACE
 45cm DECIDUOUS TREE, 1m
 S OF FC, IN E TREE LINE
 EL.EV 162.46

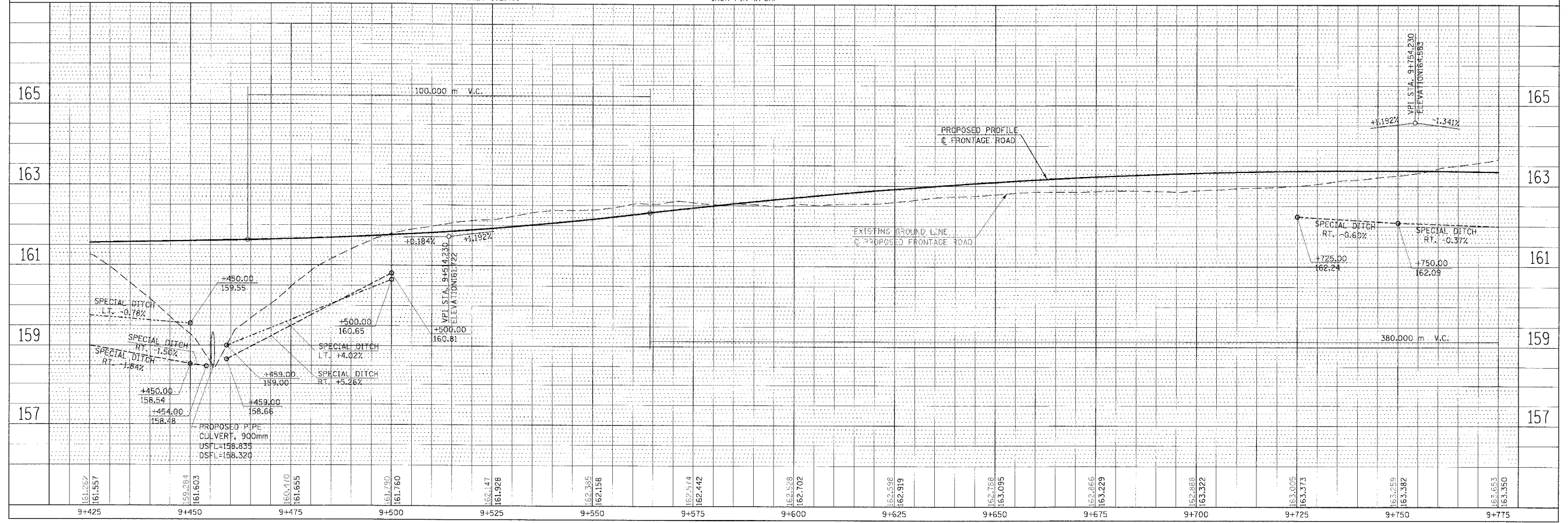
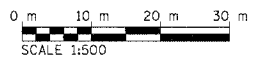
IDOT PT 5
 N 251849.751, E 705918.111
 IRON PIN w/CAP

SUPER ATTAINED TRANSITION FROM OZ
 STA 9+683.680 TO STA 9+800.000
 SUPER REMOVED
 STA 9+826.968 TO STA 10+000.000

LEGEND

BITUMINOUS REMOVAL (MISCELLANEOUS)

TREE REMOVAL LIMITS



PLAN & PROFILE, FRONTAGE ROAD, STA 9+500.00 TO STA 9+800.000

PI AN	DATE
REVISION	BY
NO.	DATE

PI AN	DATE
REVISION	BY
NO.	DATE

DATE: 11/22/2007
 TIME: 7:41:47 AM
 USER: j...
 PROJECT: ...

11/22/2007 7:41:47 AM