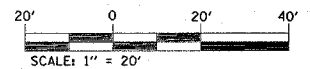
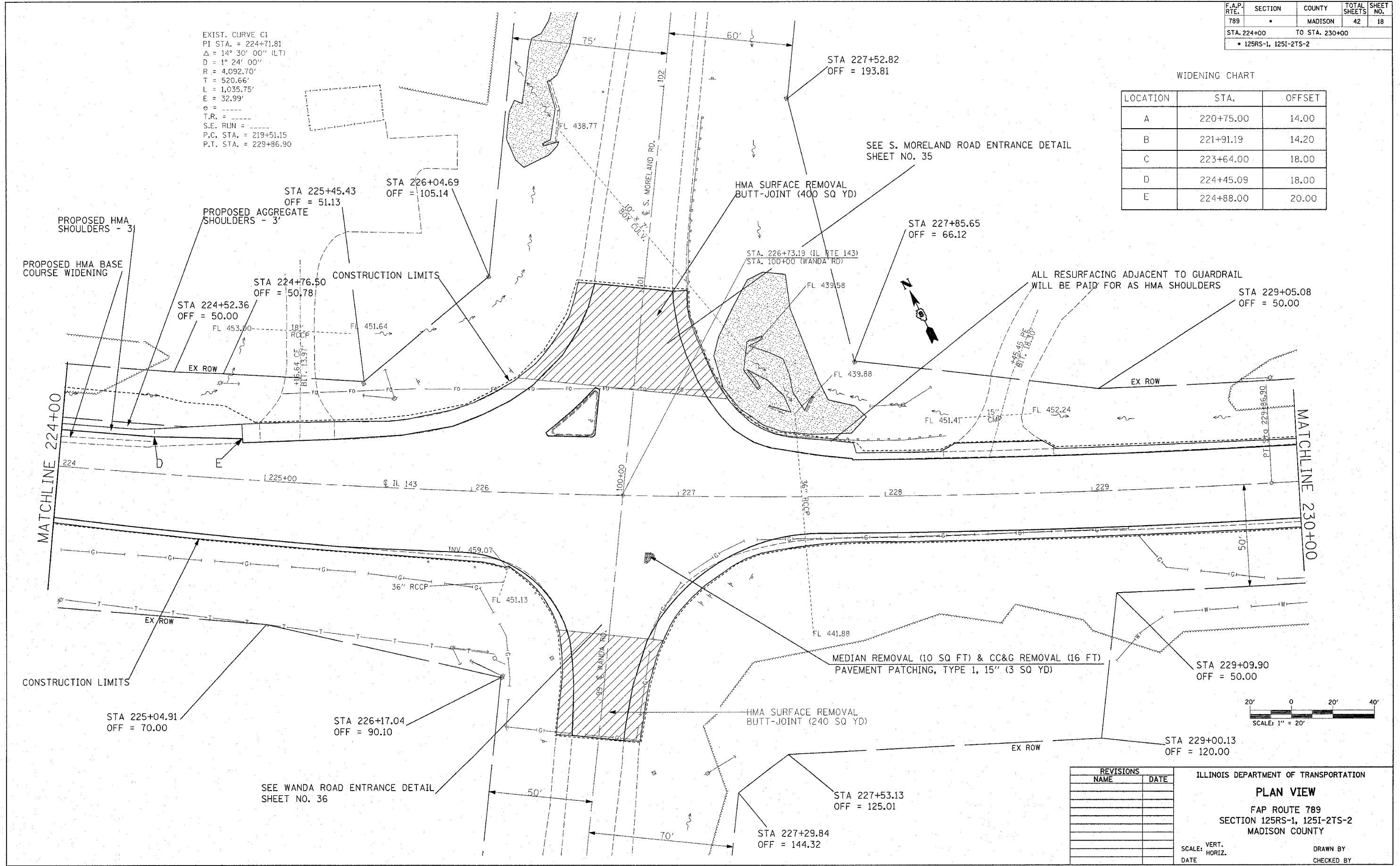


F.A.P. RTE.	SECTION	COUNTY	TOTAL SHEETS	SHEET NO.
789	*	MADISON	42	18
STA. 224+00		TO STA. 230+00		
* 125RS-1, 125I-2TS-2				

EXIST. CURVE C1
 PI STA. = 224+71.81
 $\Delta = 14^\circ 30' 00''$ (LT)
 $D = 1^\circ 24' 00''$
 $R = 4,092.70'$
 $T = 520.66'$
 $L = 1,035.75'$
 $E = 32.99'$
 $\theta =$
 $T.R. =$
 $S.E. RUN =$
 $P.C. STA. = 219+51.15$
 $P.T. STA. = 229+86.90$

WIDENING CHART

LOCATION	STA.	OFFSET
A	220+75.00	14.00
B	221+91.19	14.20
C	223+64.00	18.00
D	224+45.09	18.00
E	224+88.00	20.00



REVISIONS	
NAME	DATE

ILLINOIS DEPARTMENT OF TRANSPORTATION
PLAN VIEW
 FAP ROUTE 789
 SECTION 125RS-1, 125I-2TS-2
 MADISON COUNTY
 SCALE: VERT. _____
 DATE _____ HORIZ. _____
 DRAWN BY _____
 CHECKED BY _____

PLOT DATE = 1/23/2007
 FILE NAME = c:\projects\76994\plan\p03186.dwg
 PLOT SCALE = 28.2000 / 1
 REFERENCE = 48874