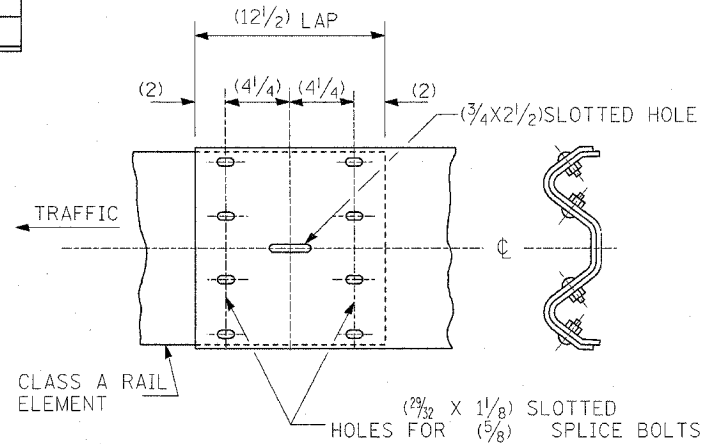
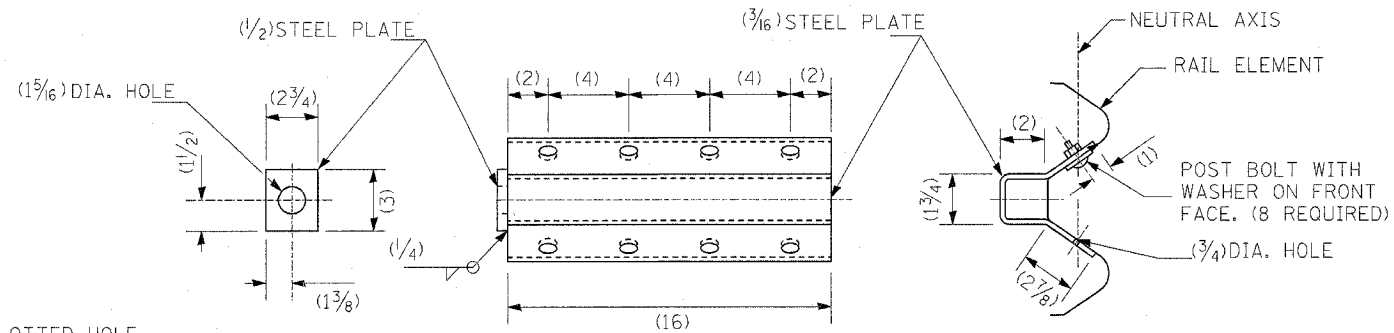


**SPLICE PLATE**

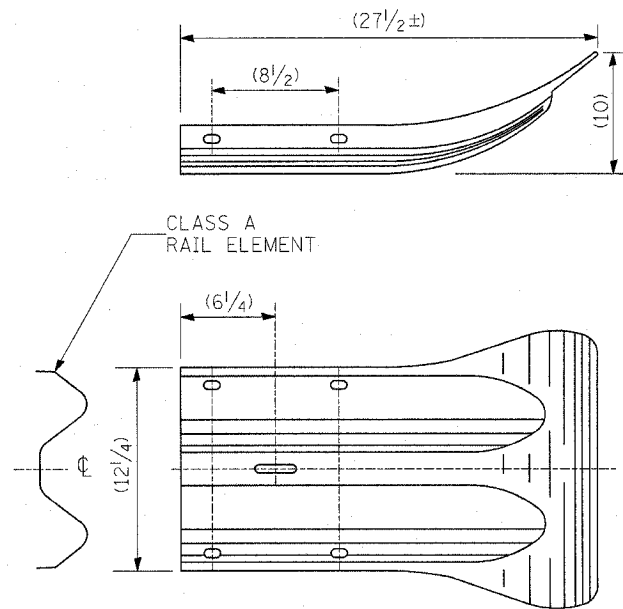


**RAIL ELEMENT SPLICE**

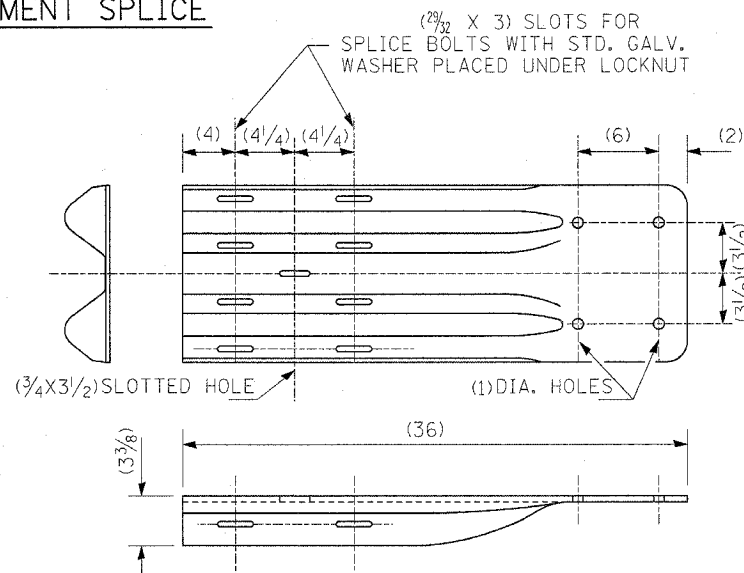


NOTE  
ANCHOR PLATE T SHALL BE USED TO ATTACH CABLE ASSEMBLY TO GUARDRAIL WHEN REQUIRED ON TRAFFIC BARRIER TERMINALS.

**ANCHOR PLATE T DETAILS**



**END SECTION**



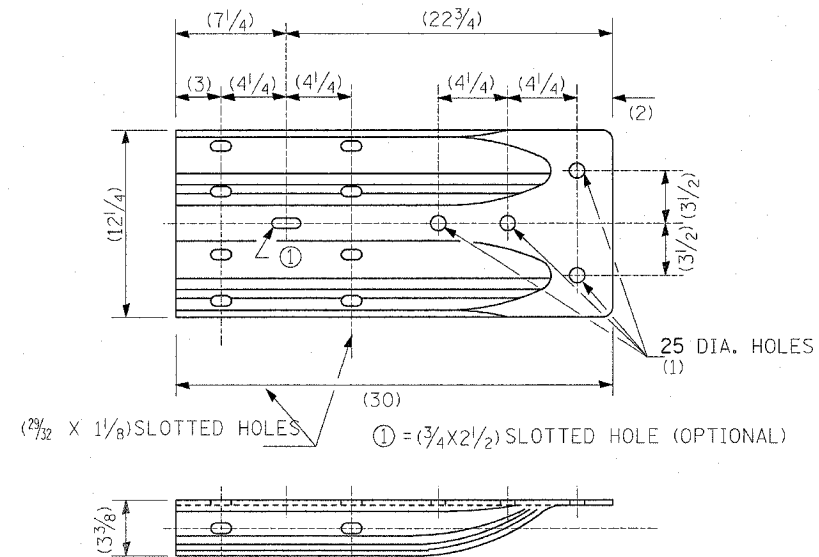
NOTE

WHEN END SHOE IS ATTACHED TO A BRIDGE PARAPET WHICH HAS AN EXPANSION JOINT, THE BOLTS SHALL BE PROVIDED WITH A LOCKNUT OR DOUBLE NUT AND SHALL BE TIGHTENED ONLY TO A POINT THAT WILL ALLOW GUARDRAIL MOVEMENT.

THE STANDARD END SHOE SHALL BE ATTACHED TO THE CONCRETE WITH PRE-DRILLED OR SELF-DRILLING ANCHOR BOLTS. THE ANCHOR CONE SHALL BE SET FLUSH WITH THE SURFACE OF THE CONCRETE.

EXTERNALLY THREADED STUDS PROTRUDING FROM THE SURFACE OF THE CONCRETE WILL NOT BE PERMITTED.

**END SHOE**



**ALTERNATE END SHOE**

ALL DIMENSIONS ARE IN (INCHES) UNLESS OTHERWISE SHOWN.

REVISIONS	
NAME	DATE

ILLINOIS DEPARTMENT OF TRANSPORTATION  
REMOVE AND REERECT  
STEEL PLATE BEAM GUARDRAIL  
DETAIL

FAP ROUTE 789  
SECTION 125RS-1, 125I-2TS-2  
MADISON COUNTY

DRAWN BY:

PLAN	SUBMITTED	DATE
NOTED	BY	
NO.	NO.	