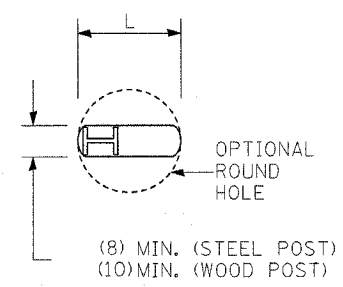
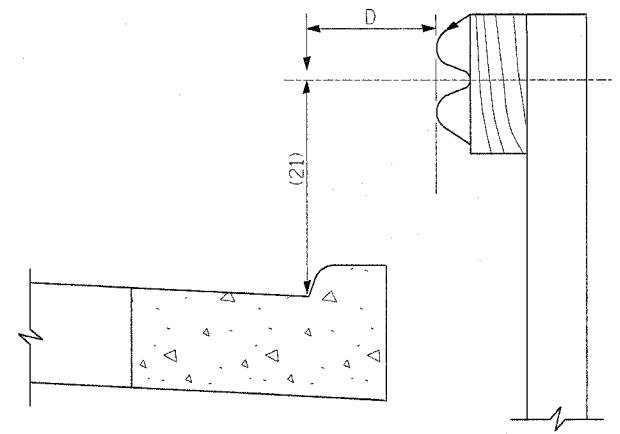


| | | | |
|------|-----------|----|------|
| PLAN | SUBMITTED | BY | DATE |
| | NOTE BOOK | | |
| | ALIGNED | | |
| | CHECKED | | |
| | DATE | | |
| | NO. | | |
| | FILE NAME | | |



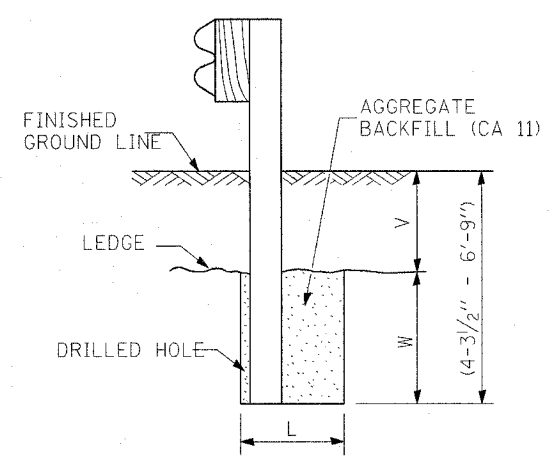
PLAN



NOTE:
IF IT IS NECESSARY FOR D TO BE MORE THAN (12) AND LESS THAN (10'-0") TYPE (M-2) CURB AND GUTTER (STD. 606001) SHALL BE USED IN FRONT OF AND IN ADVANCE OF THE GUARDRAIL.

GUARDRAIL PLACED BEHIND CURB

(D = 0 DESIRABLE TO (12) MAXIMUM)

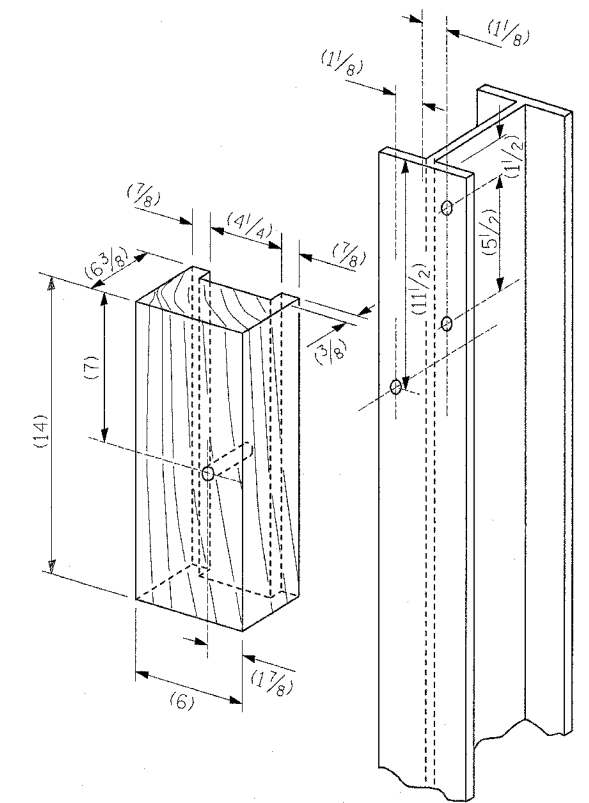


NOTE:
LEDGE LINE IS TOP OF ROCK LEDGE OR HARD SLAG FILL.

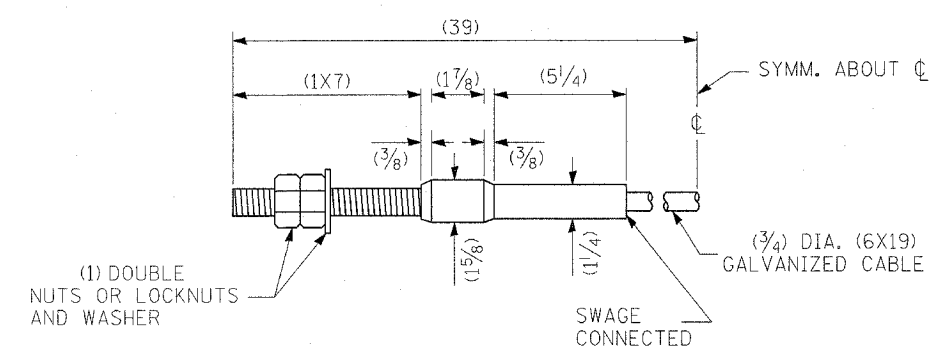
ELEVATION

FOOTING FOR POST WHEN IMPERVIOUS MATERIAL IS ENCOUNTERED

| V | W | L | |
|----------------|----------|------------|-----------|
| | | STEEL POST | WOOD POST |
| (0 - 18) | (24) | (21) | (23) |
| (>18 - 41.5) | (12) | (8) | (10) |
| (>41.5 - 53.5) | (12 - 0) | (8) | (10) |



WOOD BLOCK-OUT AND STEEL POST DETAILS



CABLE ASSEMBLY

(40,000 LBS.) MIN. BREAKING STRENGTH)
TIGHTEN TO TAUT TENSION.

ALL DIMENSIONS ARE IN (INCHES) UNLESS OTHERWISE SHOWN.

| REVISIONS | |
|-----------|------|
| NAME | DATE |
| | |
| | |
| | |
| | |
| | |

ILLINOIS DEPARTMENT OF TRANSPORTATION
**REMOVE AND REERECT
STEEL PLATE BEAM GUARDRAIL
DETAIL**
FAP ROUTE 789
SECTION 125RS-1, 125I-2TS-2
MADISON COUNTY
DRAWN BY: