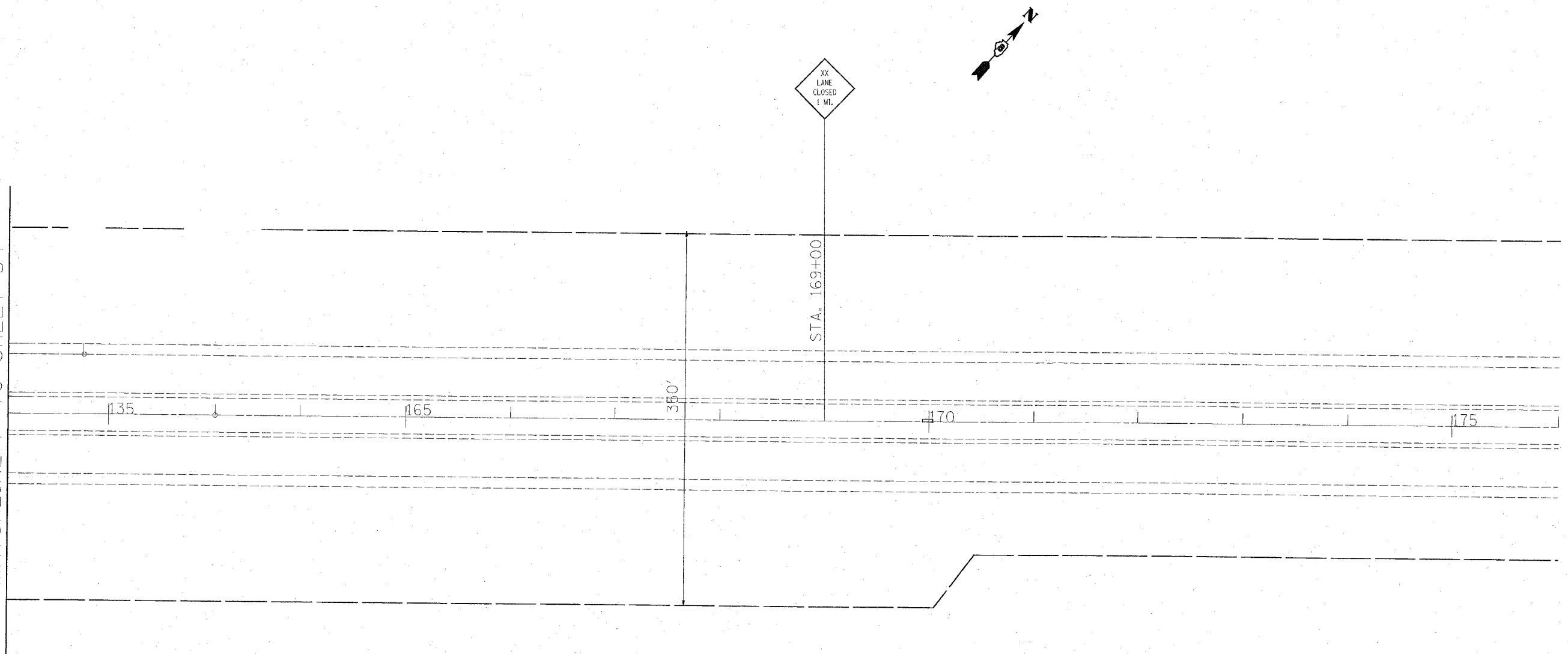


F.A.I. RTE.	SECTION	COUNTY	TOTAL SHEETS	SHEET NO.
70	82-(1,2,3,4)RS-1	ST. CLAIR	43	35
STA.		TO STA.		
FED. ROAD DIST. NO.		ILLINOIS FED. AID PROJECT		

MATCHLINE P TO SHEET 34



- NOTES:
1. SIGNS SHOWN ON THIS SHEET MOVE EAST, DUE TO THE DIFFERENCES BETWEEN STD 701401 AND STD. 701446, WHEN TWO LANE CLOSURE IS UTILIZED.
 2. RCA 3 MILES SHALL BE PLACED JUST WEST OF THE SB IL RTE 111 TO WB 55/70 ON RAMP.
 3. WORK ZONE PUBLIC INFORMATION SIGN & A MESSAGE BOARD SHALL BE SPACED FROM THE RCA PER THE DIMENSIONS SHOWN ON STD. 701400.

PLOT DATE = 2/15/2007
 FILE NAME = c:\projects\484387\plan\plan84387b.dgn
 PLOT SCALE = 50.0000' / 1" REF

REVISIONS	
NAME	DATE

ILLINOIS DEPARTMENT OF TRANSPORTATION
TRAFFIC CONTROL
 FAI ROUTE 70
 SECTION 82-(1,2,3,4)RS-1
 ST. CLAIR COUNTY

SCALE: VERT. _____
 DATE _____ HORIZ. _____

DRAWN BY _____
 CHECKED BY _____