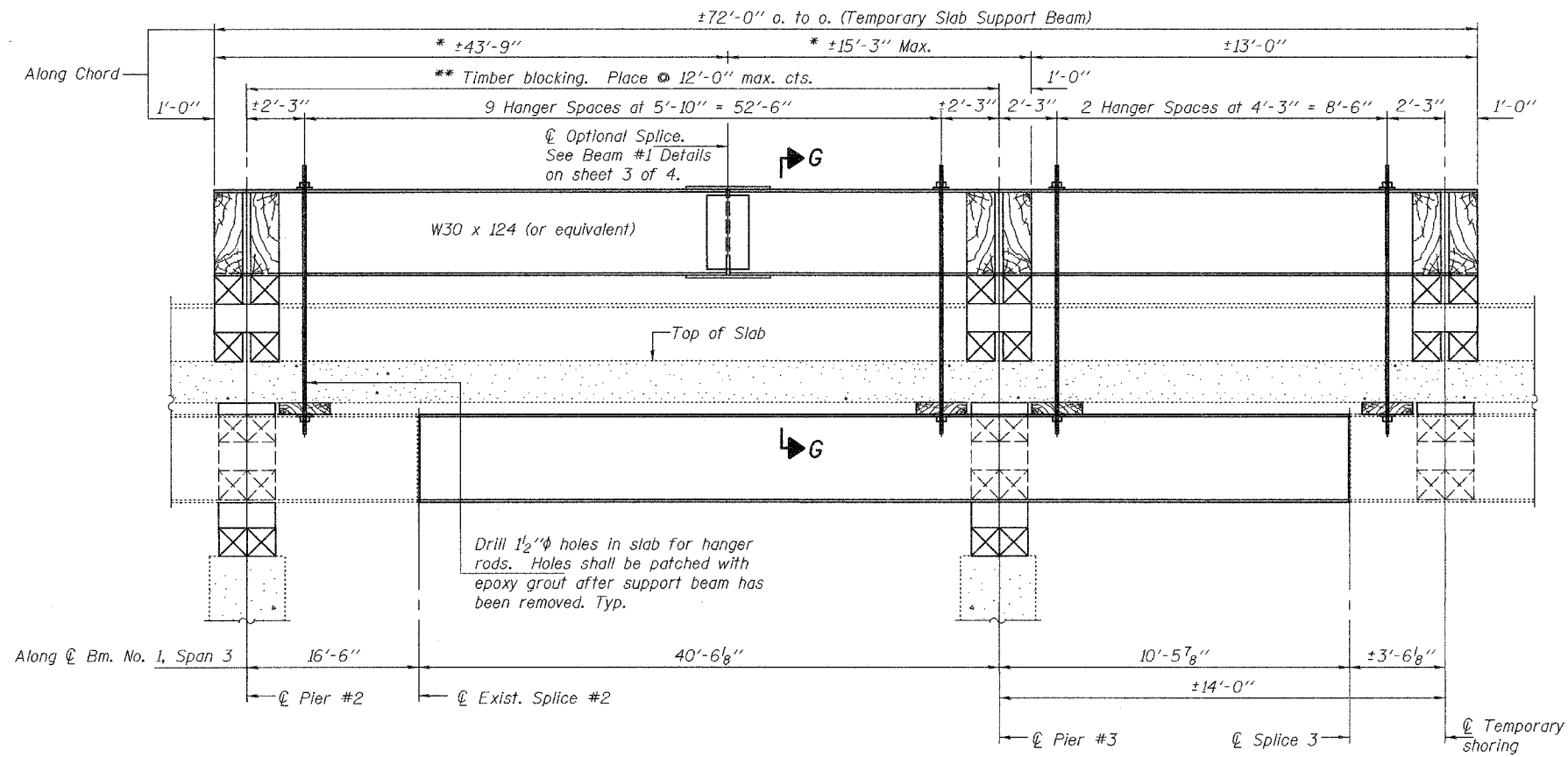


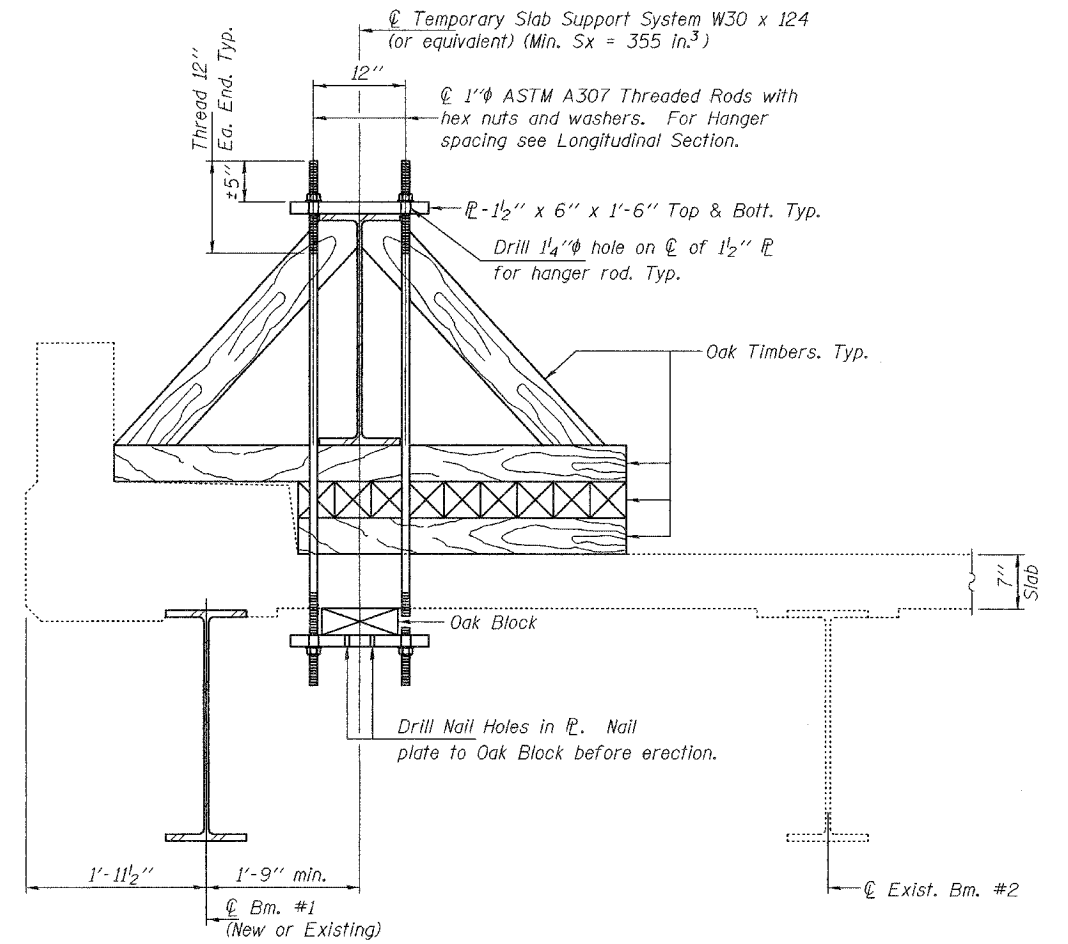
STATE OF ILLINOIS
DEPARTMENT OF TRANSPORTATION

ROUTE NO.	SECTION	COUNTY	TOTAL SHEETS	SHEET NO.	SHEET NO. 4 4 SHEETS
F.A. 809		MONROE	9	9	
FED. ROAD DIST. NO. 7	ILLINOIS	FED. AID PROJECT			



**LONGITUDINAL SECTION (LOOKING NORTH)
SUGGESTED TEMPORARY SLAB SUPPORT SYSTEM**

* These dimensions may vary for available beams in stock.
** Wood blocking between piers to be placed after support beam deflects under its own weight.



SECTION G-G

DESIGNED	AJB
CHECKED	ATH
DRAWN	ballva
CHECKED	AJB ATH

FEBRUARY 28, 2007
EXAMINED *Carl P. [Signature]*
REPAIR PLANS UNIT CHIEF
PASSED *Ralph E. Anderson*
ENGINEER OF BRIDGES AND STRUCTURES

**BRIDGE REPAIRS
IL 158 OVER IL 3
SBI RT. 158
MONROE COUNTY
SN 067-0006**